



Photo #1 OF 30

S.B. Barker Building (1903)

CONNOR

WILLIAM COUNTY

ONTARIO

SIMON BRADSHAW PARKER

PHOTOGRAPH UNKNOWN

(. 1900

SAR IDENTIFICATION STATE



Photo # 2 OF 30

S.B. Barker Building (1903)

CONSON

GILLIAM COUNTY

ORAGON

MR. AND MRS. JAMES D. BRUNN

PHOTOGRAPHER UNKNOWN

C. 1930

SAME IDENTIFICATION SAME



Photo #3 OF 30

S.B. Barker Building (1903)

CONDON

WILLIAM COUNTY

OREGON

DOWNING'S STORE AND SUMMIT SPRINGS
AT CONDON ABOUT 1889

SAME IDENTIFICATION SIGN.



Photo #4 or 30

S.B. Barker Building (1903)

Condon

William County

Oregon

HISTORIC VIEW OF CONDON, ABOUT 1890,
LOOKING WESTWARD. S.B. BARKER'S
FIRST STORE OF FRAME CONSTRUCTION
WITH ITALIANATE FALSE FRONT IS SHOWN
AT INTERSECTION OF SPRING AND MAIN STREETS

SEE IDENTIFICATION SHEET



Photo #5 OF 30

S.B. Barker Building (1903)

CONDON

WILLIAM COUNTY

OREGON

HISTORIC VIEW OF ABOUT 1892, LOOKING WEST/NW
S.B. BARKER'S ORIGINAL SITE AT CONDON,
INTERSECTION OF SPRING AND MAIN STREETS, NW CONDON

SAME IDENTIFICATION SIGNATURE



photo # 6 OF 30

S.B. Barker Building (1903)

CONDON

WILLIAM COUNTY

ORANGE

HISTORIC VIEW OF NOMINATED BUILDING,
SOUTH AND EAST ELEVATIONS

1903

SAM IDENTIFICATION SHEET



Photo #7 67230

S.B. Barker Building (1903)

CONNOR

WILLIAM COUNTY

ORANGE

INTERIOR VIEW, 1907

SEE IDENTIFICATION SHEET



photo # 8 OF 30

S.B. Barker Building (1903)

CONDON

WILLIAM COUNTY

ORANGE CO.

S.B. BARKER CO. DELIVERY WAGON ON MAIN STREET, C. 1910

SAR IDENTIFICATION SHEET



THE S. B. BARKER CO

Nº 12. STREET SCENE, CONDON, ORE.

Photo # 9 of 30

S.B. Barker Building (1903)

CONDON

WILLIAM COUNTY

OREGON

BANKER BUILDING ON MAIN STREET, 1910

GAZ IDENTIFICATION STREET



photo #10 OF 30

S.B. Barker Building (1903)

CONSON

William County

ORANGE

INTERIOR VIEW, DUNN BROTHERS STORE IN S.B. BARKER
BUILDING, C. 1930, LOOKING WEST

S&P IDENTIFICATION SHEET



Photo # 11 OF 30

S.B. Barker Building (1903)

CONSON

GILLIAM COUNTY

ORANGE

INTERIOR VIEW, DUNN BROTHERS STORE IN S.B. BARKER
BUILDING, C. 1930, LOOKING WEST FROM FRONT
OF STORE -

SM IDENTIFICATION SM



Photo #12 OF 30

S. B. Barker Building (1903)

LONDON

GILLIAM COUNTY

ORANGE

1988 PHOTO

SOUTH AND EAST ELEVATIONS



Photo # 13 OR 30

S.B. Barber Building (1903)

LONDON

WILLIAM COUNTY

UNK600f

1988 PHOTO

SOUTH ALABAMA



Photo #14 OF 30

S.B. Barker Building (1903)

London

William County

Oregon

1988 PHOTO

EAST FRONT, LOOKING NORTH



Photo #15 OF 30

S.B. Barker Building (1905)

CONNOR

WILLIAM COUNTY

CONNOR

1988 PHOTO

FRONT ENTRANCE, EAST FACIA

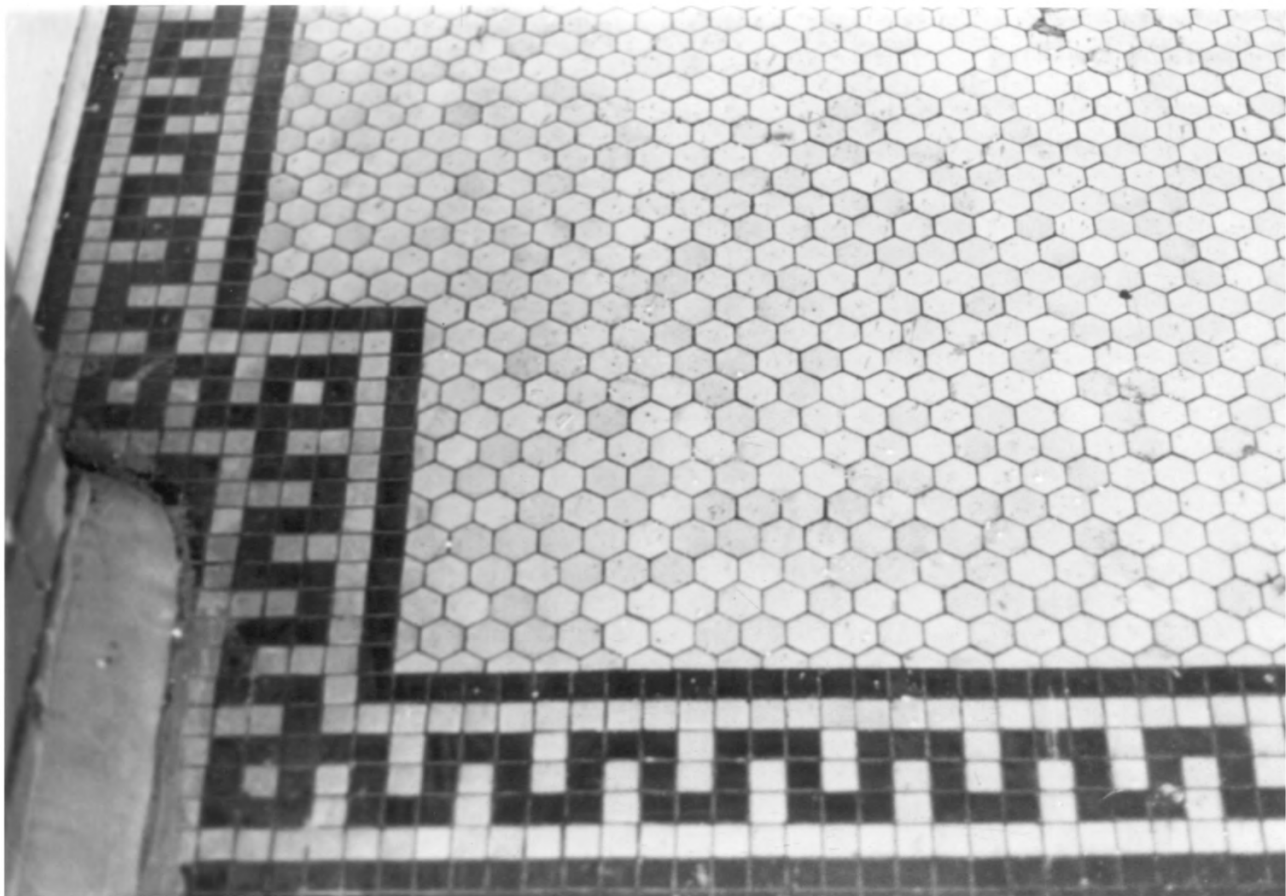


Photo # 16 OF 30

S.B. Barker Building (1903)

LONDON

GILLIAM COUNTY

OREGON

1988 PHOTO

ENTRANCE PAVING TILE



Photo #17 OF 30

S.B. Barker Building (1903)

Carrollton

WILLIAM COUNTY

OREGON

1988 PHOTO

ENTRANCE PAVING TILE



Photo # 18 of 30
S.B. Barker Building (1903)

CONDON
WILLIAM COUNTY
OREGON

1988 PHOTO

SECOND STORY BRACING, FRONT (EAST) ELEVATION



Photo # 19 OF 30

S.B. Barker Building (1903)

LONDON

WILLIAM COUNTY

OREGON

1988 PHOTO

SECOND STORY OPENING, SOUTH RENOVATION



Photo # 20 OF 30

S. B. Barker Building (1903)

LONDON

WILLIAM COUNTY

OREGON

1988 PHOTO

FILL-IN IN GROUND STORY BRACING, CREATION OF SOUTH
PLANTATION



Photo # 21 OF 30

S.B. Barker Building (1903)

CONNOR

WILLIAM COUNTY

CONNORS

1988 PHOTO

ENTRANCE, WEST AND SOUTH ELEVATION

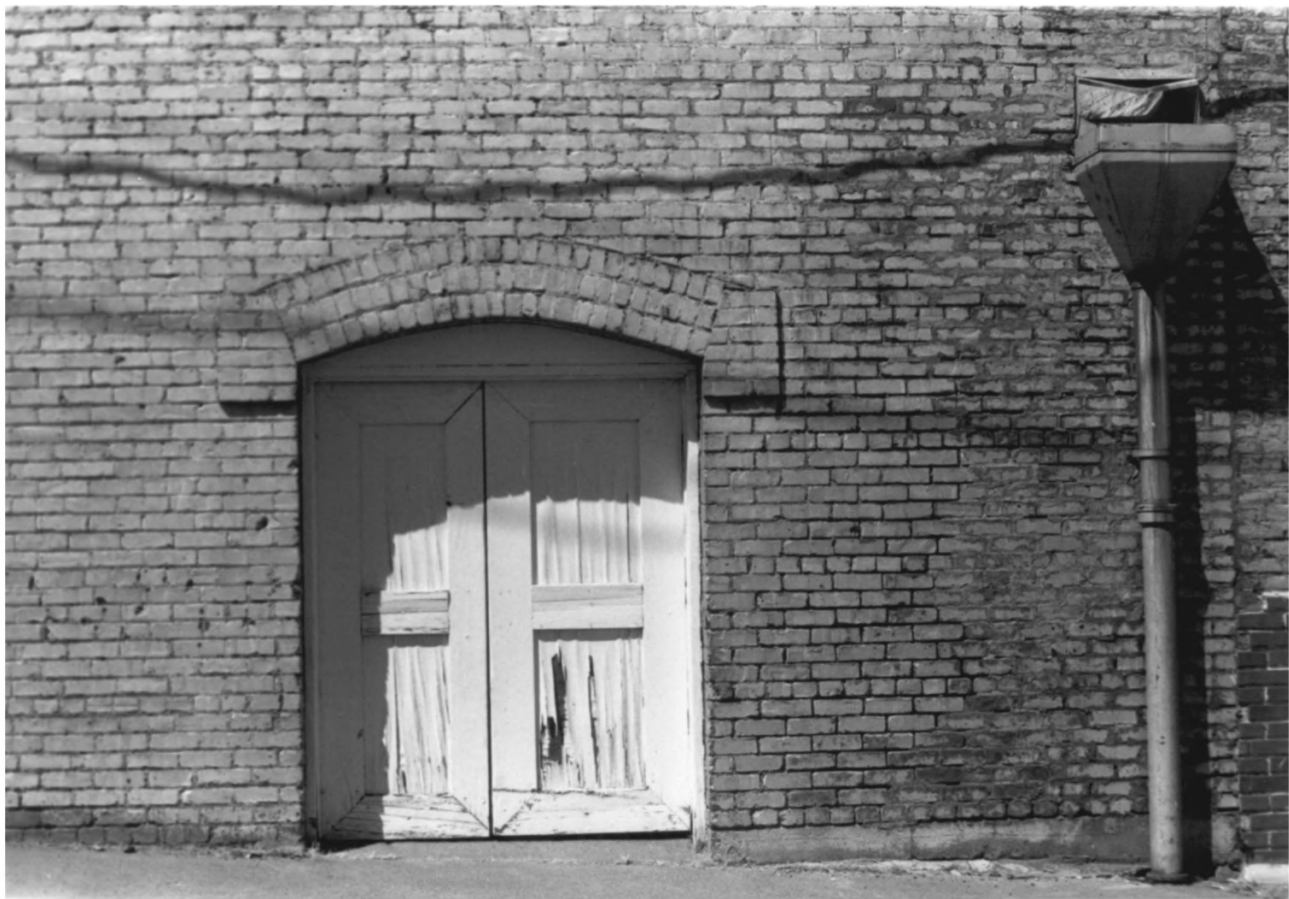


Photo # 22 of 30
S.B. Barker Building (1903)

LONDON
WILLIAM COUNTY
OREGON

1985 PHOTO

ENTRANCE, SOUTH ELEVATION OF FIRST FLOOR ADDITION



Photo # 23 OF 30
S.B. Barker Building (1903)

LONDON

WILLIAM COUNTY

OREGON

1988 PHOTO

FIRST FLOOR ENTRANCE, LOOKING WEST

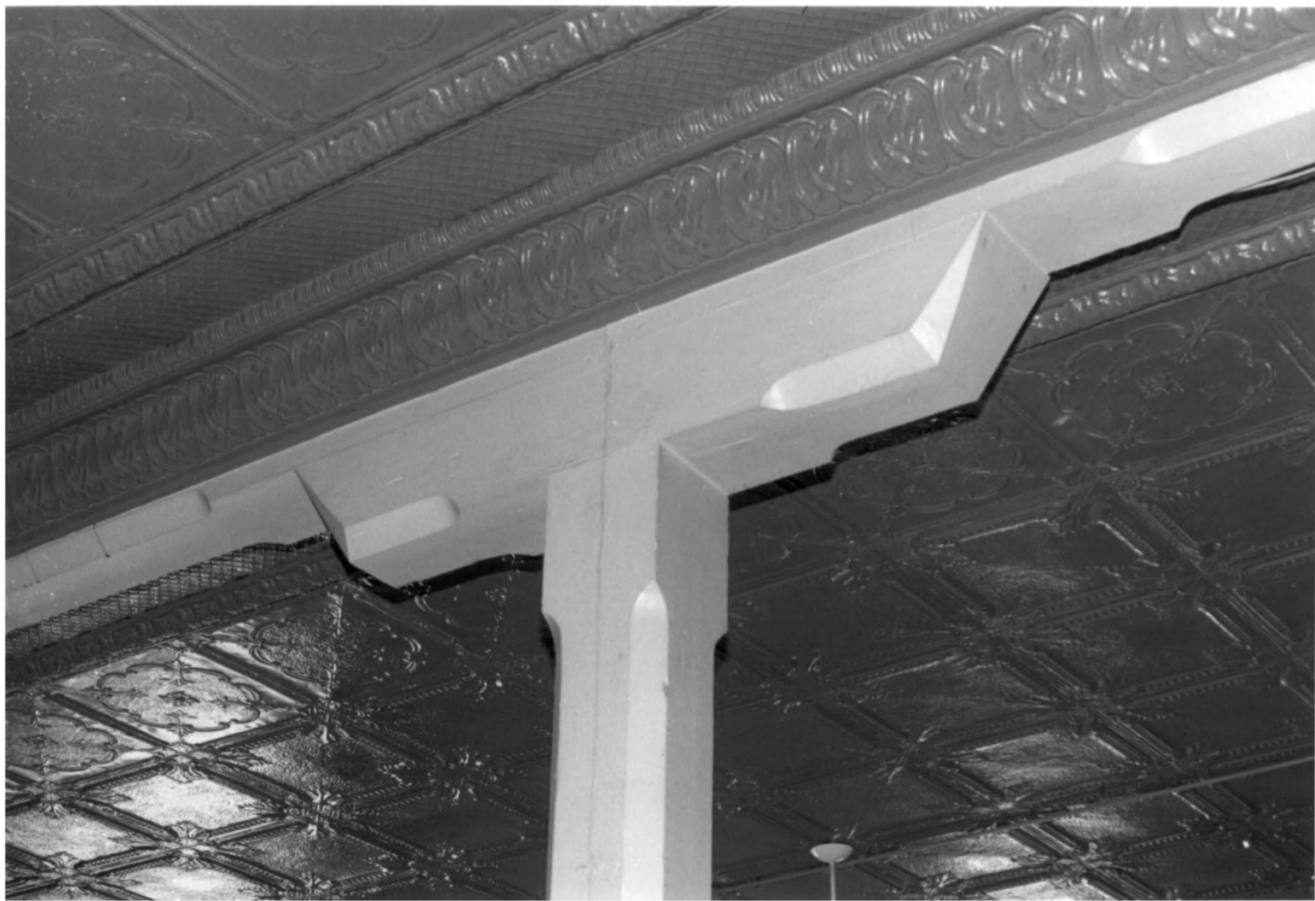


Photo # 24 OF 30

S. B. Barker Building (1903)

CONDON

WILLIAM COUNTY

OREGON

1988 PHOTO

VIEW OF FIRST FLOOR
CHAMFER DETAILS,

COLUMN AND BEAM, WITH
AND EMBOSSED TIN CEILING

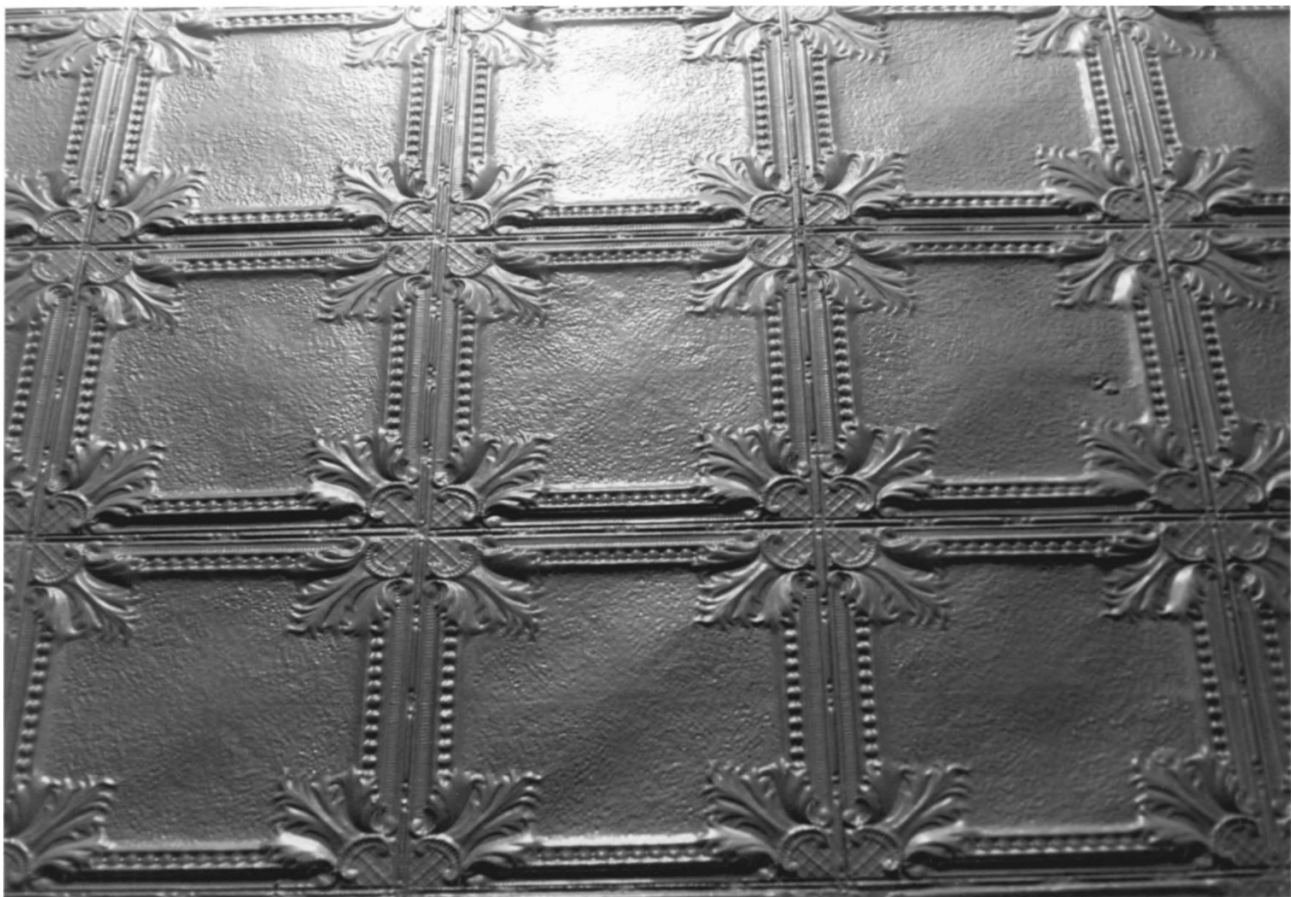


Photo # 25 OF 30
S.B. Barker Building (1903)

LONDON

WILKINSON COUNTY

CAROLINA

1988 PHOTO

DETAIL OF AMBASSADOR TIN CEILING



Photo # 26 OF 1930

S.B. Barker Building (1903)

LONDON

WILLIAM COUNTY

OREGON

1955 PHOTO

DETAIL OF EMBROIDERED TIN CEILING



Photo # 27 of 30

S. B. Barker Building (1903)

CONDON

WILLIAM COUNTY

OREGON

1988 PHOTO

DETAIL OF EMBROIDERED TIN CEILING



Photo # 28 OF 30

S.B. Barker Building (1903)

CONDON

WILLIAM COUNTY

OREGON

1988 PHOTO

TRANSOM PANEL FILLED WITH PRISM GLASS,
STORM FRONT INTENTION, LOOKING EAST



Photo # 29 OF 30

S.B. Barker Building (1903)

LONDON

GILLIAM COUNTY

OR&CONF

1988 PHOTO

SECOND STORY ENTRANCE, LOOKING EAST TO FRONT OF
BUILDING.



Photo # 30 of 30

S. B. Barker Building (1903)

LONDON

GILLIAM COUNTY

OREGON

1988 PHOTO

INTERIOR VIEW,

SECOND FLOOR; DETAIL OF TYPICAL

WINDOW TRIM. LOOKING EAST