

Aratama Maru

*Reproduction: Micronesian
Area Research Center,
University of Guam*

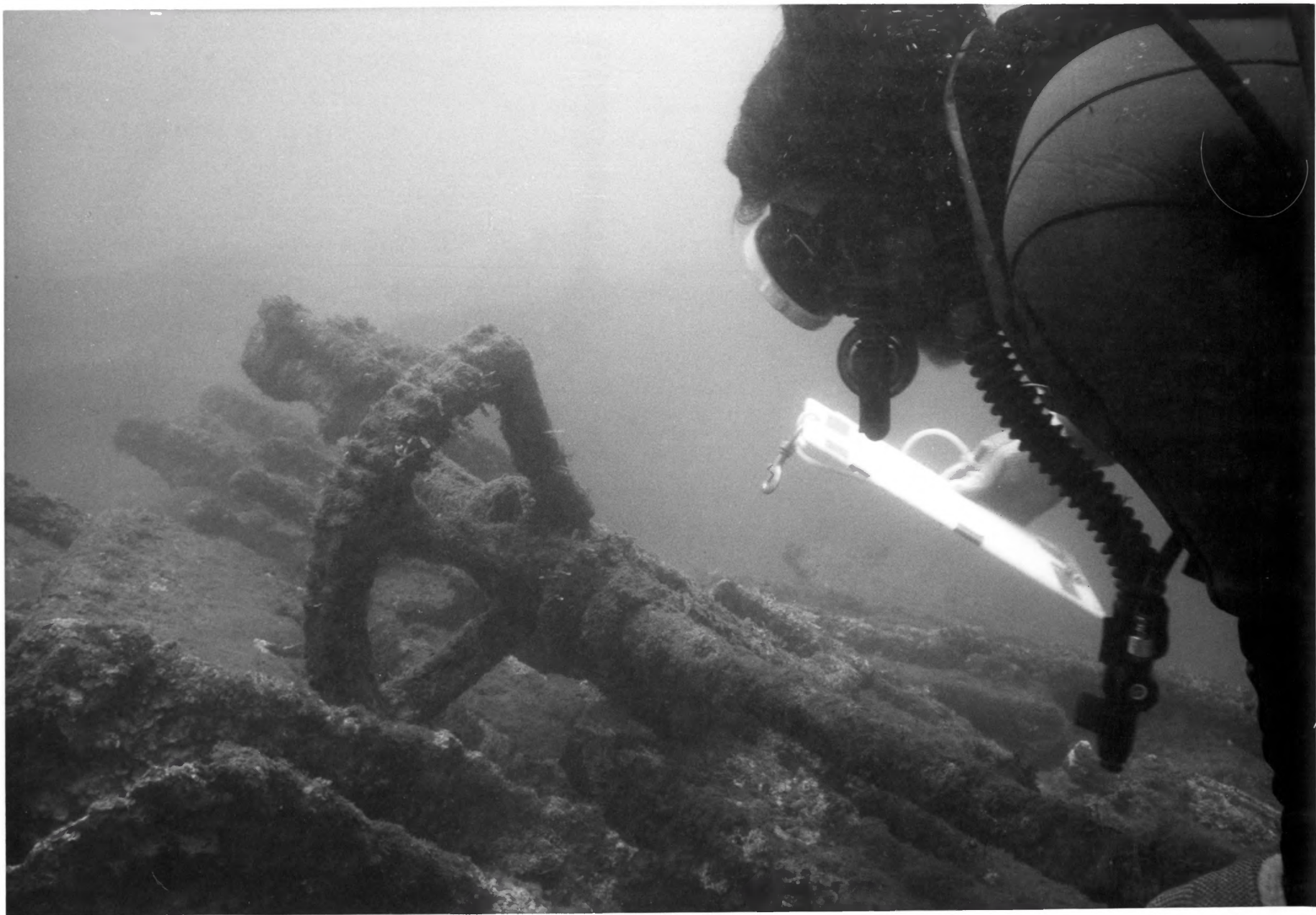
1987



1. ARATAMA MARU
2. Talofofu Bay, Guam
- 3.
4. May, 1987
5. Submerged Cultural Resources Unit,
National Park Service, Santa Fe, NM
6. General location of shipwreck is
between two small points, Talofofu Bay



1. ARATAMA MARU
2. Talofofo Bay, Guam
3. Dan Lenihan
4. May, 1987
5. Submerged Cultural Resources Unit,
National Park Service, Santa Fe, NM
6. Hatchway aft of machinery spaces, stbd
side



1. ARATAMA MARU
2. Talofofo Bay, Guam
3. Dan Lenihan
4. May, 1987
5. Submerged Cultural Resources Unit,
National Park Service, Santa Fe, NM
6. Steering quadrant



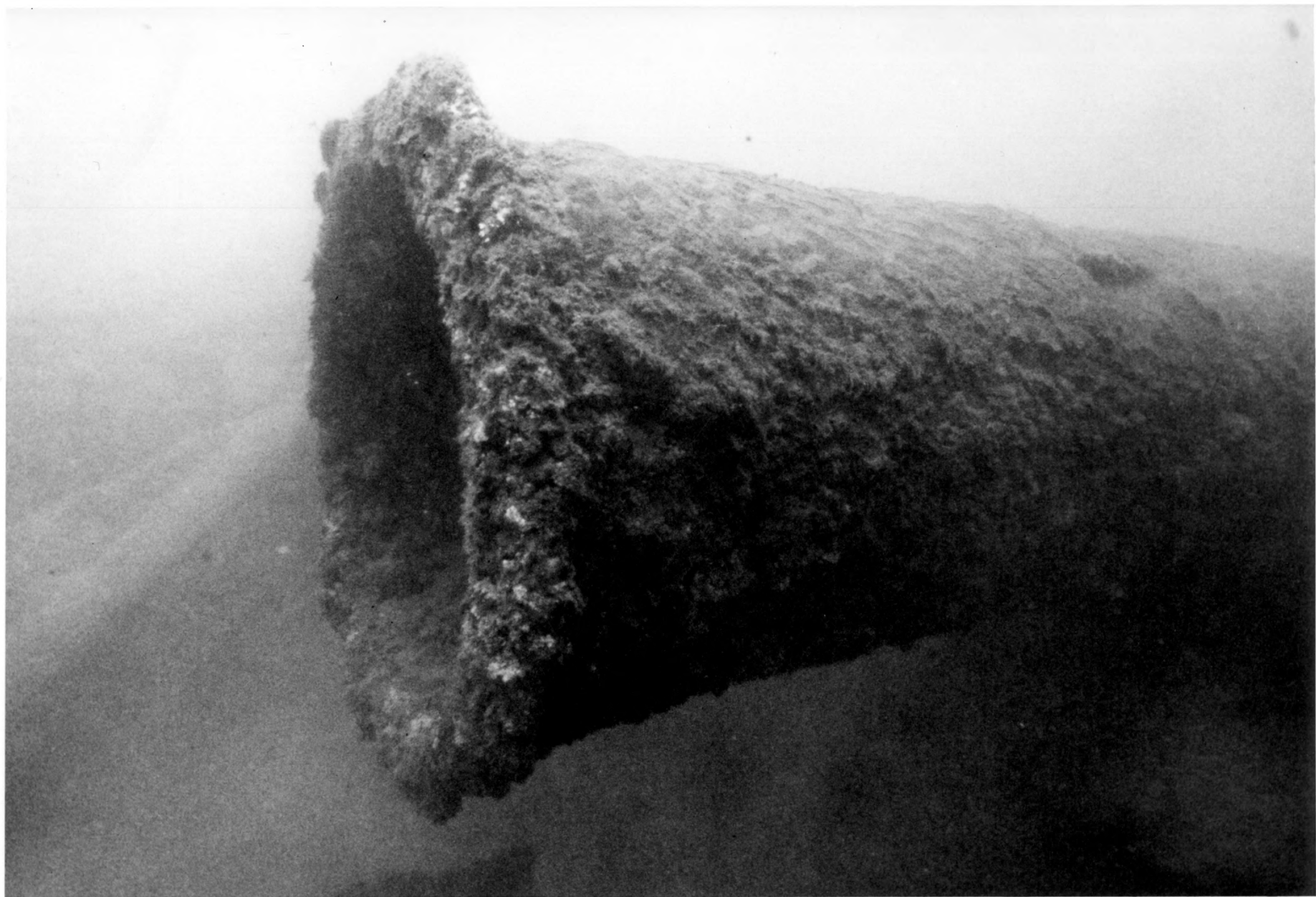
1. ARATAMA MARU
2. Talofofo Bay, Guam
3. Dan Lenihan
4. May, 1987
5. Submerged Cultural Resources Unit
National Park Service, Santa Fe, NM
6. Hatchway aft of machinery spaces,
starboard side



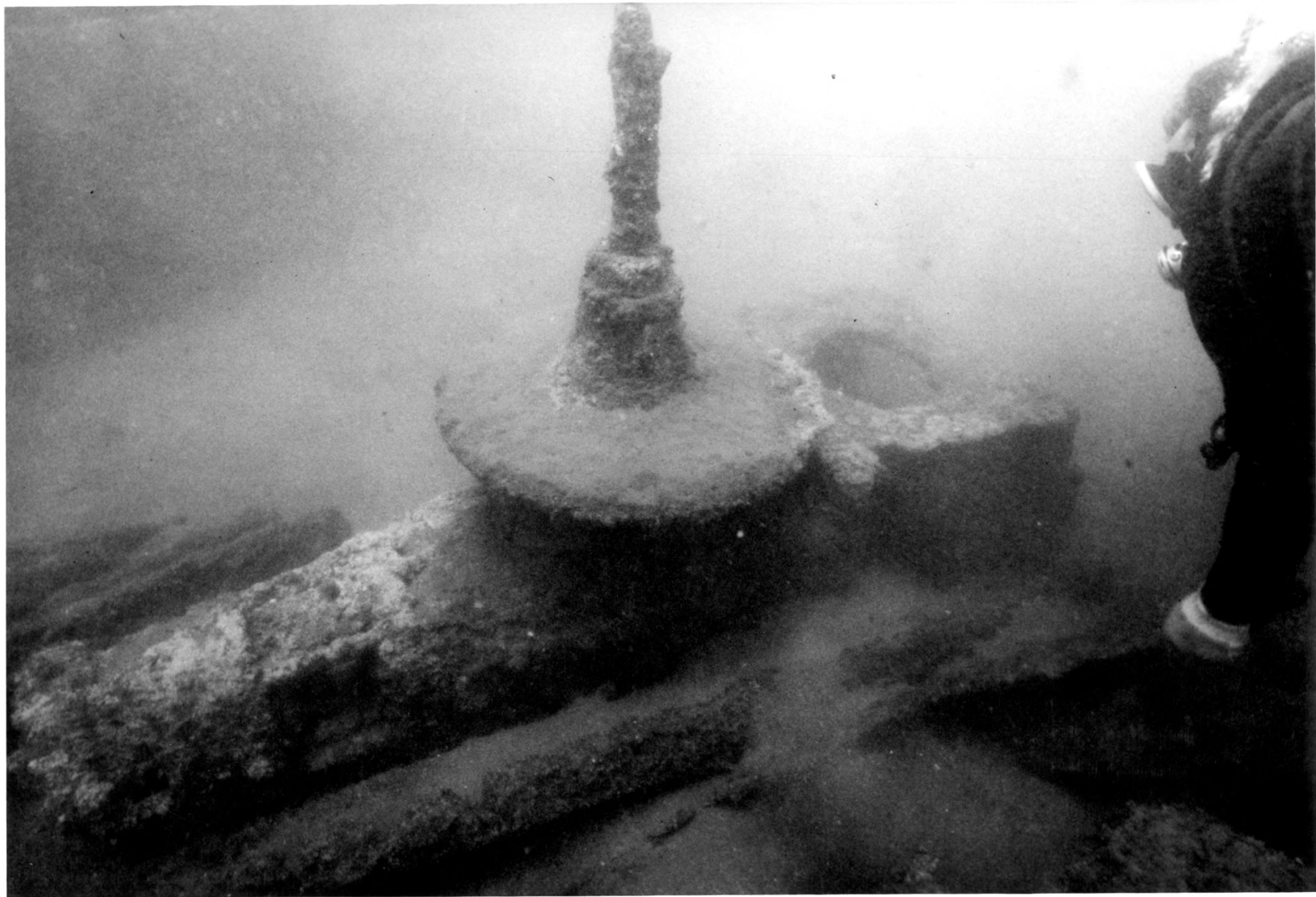
1. ARATAMA MARU
2. Talofofo Bay, Guam
3. Ken Vrana
4. May, 1987
5. Submerged Cultural Resources Unit,
National Park Service, Santa Fe, NM
6. D. Lenihan taking baseline measurement
at aft cargo winch



1. ARATAMA MARU
2. Talofofo Bay, Guam
3. Victor Torres
4. May, 1987
5. Submerged Cultural Resources Unit,
National Park Service, Santa Fe, NM
6. GovGuam Archeologist John Salas sketch-
ing at the bow



1. ARATAMA MARU
2. Talofofo Bay, Guam
- 3.
4. May, 1987
5. Submerged Cultural Resources Unit,
National Park Service, Santa Fe, NM
6. Base of king post



1. ARATAMA MARU
2. Talofofo Bay, Guam
- 3.
4. May, 1987
5. Submerged Cultural Resources Unit,
National Park Service, Santa Fe, NM
6. Piece of machinery, located on the
starboard side of the wreckage field



1. ARATAMA MARU
2. Talofofo Bay, Guam
3. Victor Torres
4. May, 1987
5. Submerged Cultural Resources Unit,
National Park Service, Santa Fe, NM
6. Boiler and machinery spaces



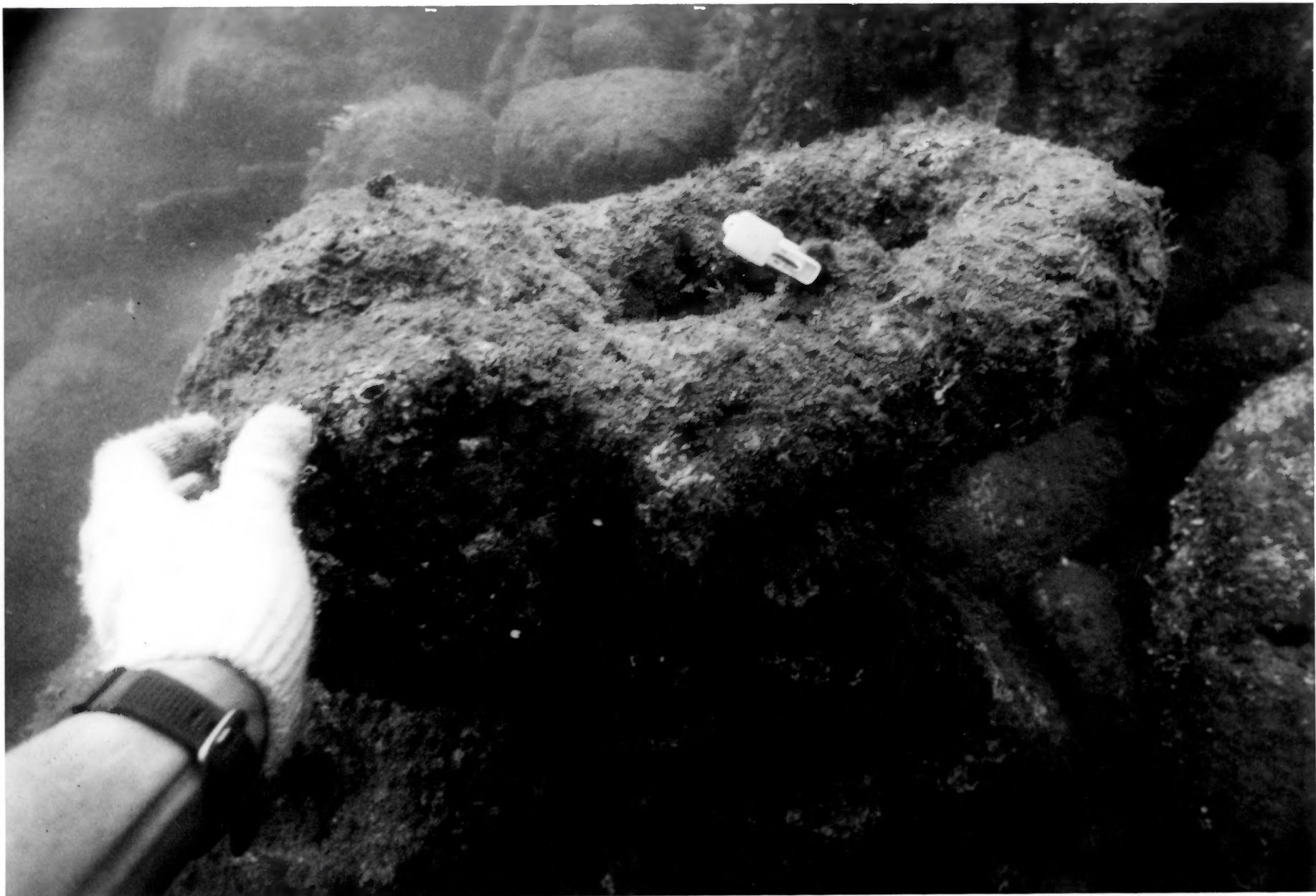
1. ARATAMA MARU
2. Talofofo Bay, Guam
- 3.
4. May, 1987
5. Submerged Cultural Resources Unit,
National Park Service, Santa Fe, NM
6. Close-up view of king bridge



1. ARATAMA MARU
2. Talofofo Bay, Guam
- 3.
4. May, 1987
5. Submerged Cultural Resources Unit,
Santa Fe, NM National Park Service
6. Upper portion of king post just below
bridge



1. ARATAMA MARU
2. Talofofo Bay, Guam
3. Ken Vrana
4. May, 1987
5. Submerged Cultural Resources Unit,
National Park Service, Santa Fe, NM
6. Folding stockless anchor in anchor
pocket in bow



1. ARATAMA MARU
2. Talofofo Bay, Guam
- 3.
4. May, 1987
5. Submerged Cultural Resources Unit,
National Park Service, Santa Fe, NM
6. Anchor shackle attache to anchor chain
in bow



1. ARATAMA MARU
2. Talofofo Bay, Guam
- 3.
4. May, 1987
5. Submerged Cultural Resources Unit,
National Park Service, Santa Fe, NM
6. Ladder attached to lower portion of
king post



1. ARATAMA MARU
2. Talofofo Bay, Guam
3. Ken Vrana
4. May, 1987
5. Submerged Cultural Resources Unit,
National Park Service, Santa Fe, NM
6. Stanchions forward of the machinery
space