



University Place Historic Residential District

Lincoln, Lancaster County, Nebraska

Photo by E Zimmer, Nov. 2002, Lincoln Planning Dept.

View of Walker Ave, at N. 50<sup>th</sup>, facing east,

Photo 1 of 16.



University Place Historic Residential District

Lincoln, Lancaster County, Nebr.

Photo by E. Zimmer, Nov 2002, Lincoln Planning Dept.

5003 Walker Ave, viewed from west.

Photo 2 of 16.



University Place Historic Residential District

Lincoln, Lancaster County, Nebraska

Photo by Ed Zimmer, Nov 2002, Lincoln Planning  
Dept.

North side of Walker Ave at N. 51<sup>st</sup> facing NE.

Photo 3 of 16.



University Place Historic Residential District  
Lincoln, Lancaster County, Nebr.

Photo by E. Zimmer, Nov. 2002, Lincoln Planning  
Dept.  
South side of Walker at N. 52<sup>nd</sup> facing SE.  
Photo 4 of 16.





University Place Historic Residential District  
Lincoln, Lancaster County, Neb.

Photo by E. Zimmer, Nov. 2002, Lincoln Planning  
Dept.

South side of Walker Ave. at N. 53<sup>rd</sup> facing SW

Photo 5 of 16.



University Place Historic Residential District

Lincoln, Lancaster County, Nebraska

East side of N. 52nd between Walker and  
Leighton Ave facing NE.

Photo 6 of 16



University Place Historic Residential District

Lincoln, Lancaster County, Nebr.

Corner of Walker Ave and N. 53<sup>rd</sup>, facing NW

Photo 7 of 16.



University Place Historic Residential District  
Lincoln, Lancaster County, Nebr.

Corner of Walker Ave & N. 54<sup>th</sup> St., facing NW  
Photo 8 of 16.





University Place Historic Residential District.

Lincoln, Lancaster County, Nebr.

South side of Walker at N. 54<sup>th</sup> facing SW.

Photo 9 of 16.



University Place Historic Residential District.

Lincoln, Lancaster County, Neb.

Corner of Leighton Ave. & N. 53<sup>rd</sup> St, facing

NW

Photo 10 of 16.



University Place Historic Residential District  
Lincoln, Lancaster County, Nebr.

North side of Leighton facing NW, showing  
at center multi-family dwelling at 5236  
Leighton.

Photo 11 of 16.



University Place Historic Residential District  
Lincoln, Lancaster County, Nebr.

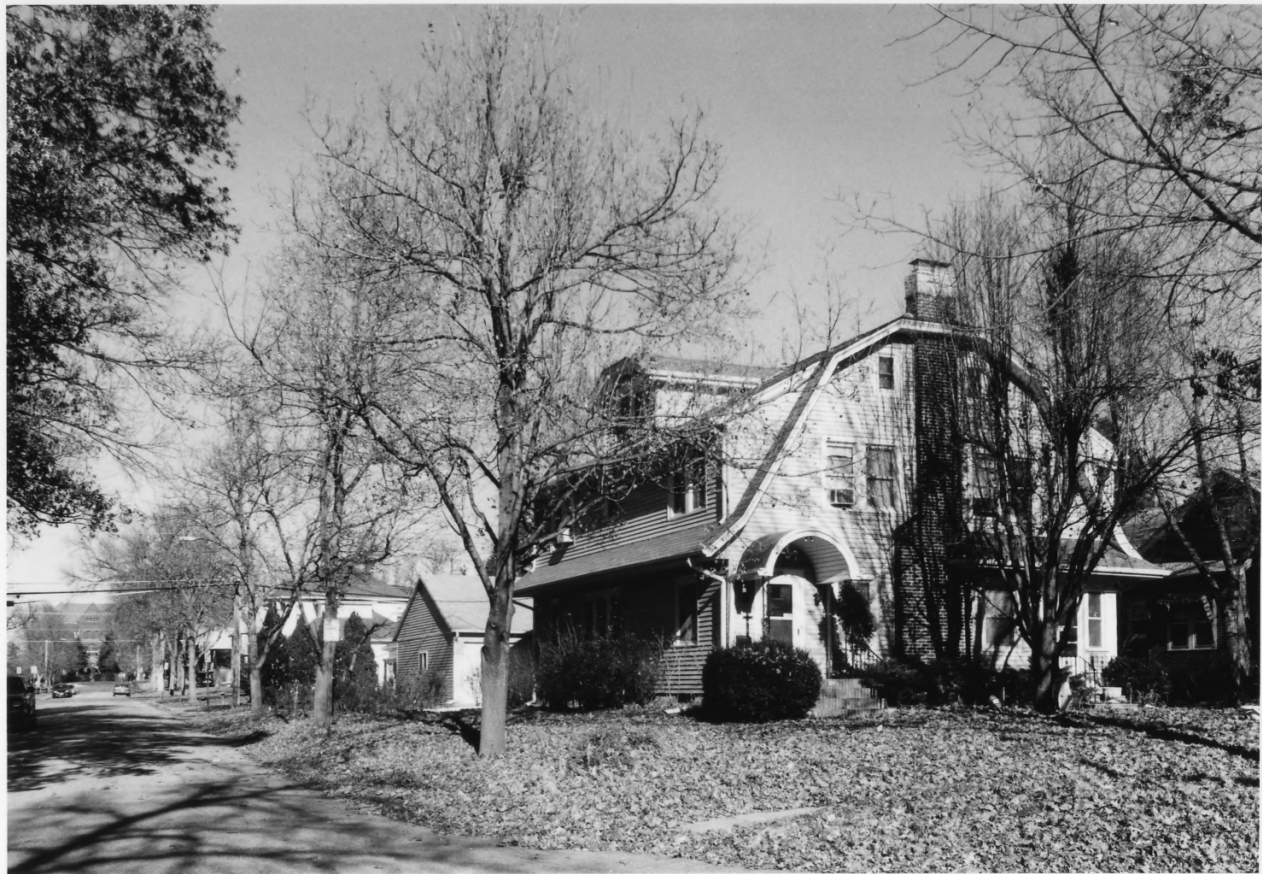
Corner of Leighton and N. 52<sup>nd</sup> facing SE.  
Photo 12 of 16.





University Place Historic Residential District  
Lincoln, Lancaster County, Nebr.

South side of Leighton - at N. 52nd facing SW.  
Photo 13 of 16.



University Place Historic Residential District:

Lincoln, Lancaster County, Nebr.

N. 51st at Leighton facing NW with "Old Main" <sup>North</sup>  
on Nebr. Wesleyan campus in background,  
facing N.

Photo 14 of 16.



University Place Historic Residential District  
Lincoln, Lancaster County, Neb.

North side of Leighton Ave. between N. 50<sup>th</sup>  
and N. 51<sup>st</sup>, facing NW.

Photo 15 of 16



University - Place Historic Residential District  
Lincoln, Lancaster County, Nebr.

N. side of Leighton between N. 49<sup>th</sup> and  
N. 50<sup>th</sup>, facing NE

Photo 16 of 16