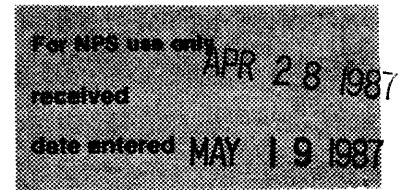


**United States Department of the Interior  
National Park Service**

**National Register of Historic Places  
Inventory—Nomination Form**



Continuation sheet

Item number

8

Page

# 19

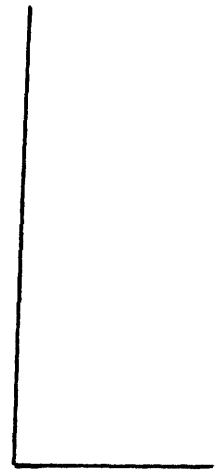
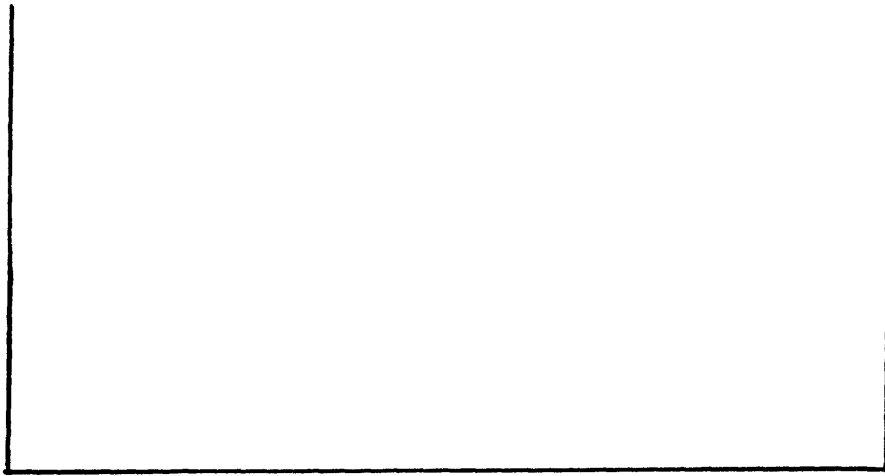
19. ANGELUS MESA BRANCH

2700 W. 52nd St.

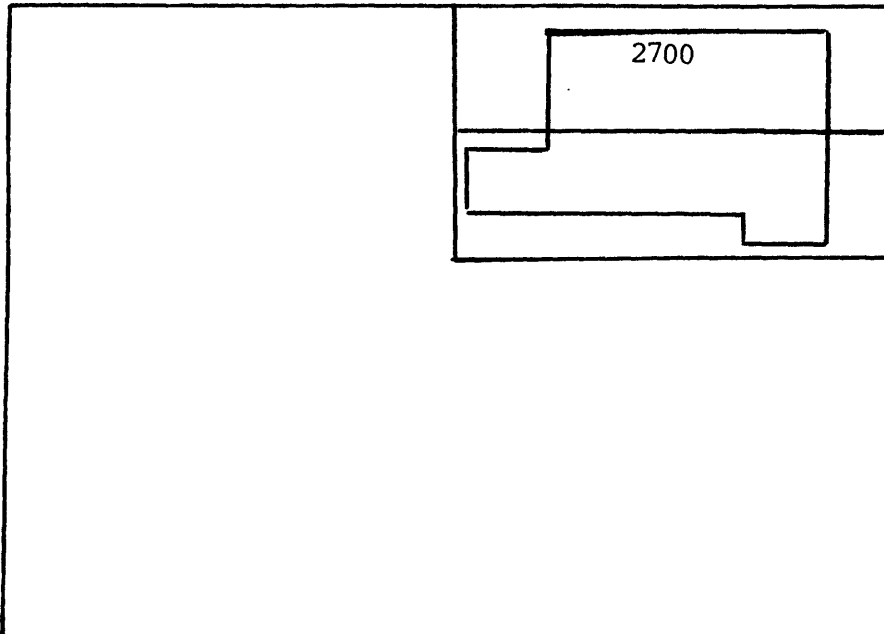
A tall rectangular one story building with a single gable roof. This configuration on a corner site was attempted with variations by three different architects at Irving, Wilshire and the Muir Branch locations. This version featured a plain unpainted brick facade, relieved only by an ornamental border around the entry. The size and massing of the building is compatible with the older Palladian styled grammar school across the intersection. Both buildings represent the best examples of landmark architecture in the immediate vicinity.

AUG 14 1985

BRANCH LIBRARIES, LOS ANGELES, CA  
#19 Angelus Mesa Branch, 2700 W.  
52nd St.  
1 inch=60 feet



52nd St.



5th Ave.

