



SHERMAN

POETS LOW
5000 58th BUCKLE UP ST
830-1005
TRUST

Domino's

Sherrimon Street Historic District

Denver County, CO

11



CASAROVITA
- 1001 -

Sherman Street Historic District
Denver County, Co

#2



Shenman Street Historic District

Denver County, CO

#3



Sherman Street Historic District

Denver County, CO

5



Sherman Street Historic District

Denver County, CO

9



Sherman Street Historic District

Denver - County, CO

6



1025

Sherman Street Historic District

Denver County, CO

*7



Sherman Street Historic District

Denver County, Co

* 88



MARK TWAIN

1933

LEASING OFFICES
1000
1000

Sherman Street Historic District

Denver County, CO

#9

MARK TWAIN

1035



LEASING OF

1000 KEEPMAN

900-800-1000

www.triton.com

TRITON

WCAN

Sherman Street Historic District

Denver County, CO

*10



NATHANIEL
HAWTHORNE

Sherman Street Historic District

Denver County, CO

* 11



EUGENE
FIELD

1955

PORTS ROW

830-1008

office

Sherman Street Historic District
Denver County, CO

#12



EUGENE
FIELD
1055

#13

Sherman Street Historic District
Denver County, CO



Sherman Street Historic District
Denver County, CO

#14



POETS ROW
1000-1000 BROADWAY SE
830-1005
THURS

Sherman Street Historic District

Denver County, Co

15



Sherman Street Historic District

Denver County, CO

#16



Sherman Street Historic District

Denver County, CO

#17

SHERMAN
ARMS

1085



Sherman Street Historic District

Denver County, CO

18



Sherman Street Historic District
Denver County, CO

19



JAMES RUSSELL
LOWELL

Sherman Street Historic District
Denver County, CO

* 20

A black and white photograph of a brick building's entrance. The entrance is framed by a stone archway with decorative elements. Above the archway is a window with three vertical panes. The name "JAMES RUSSELL LOWELL" is inscribed in stone above the archway, with the year "1870" below it. Two lantern-style light fixtures are mounted on the brick wall, one on each side of the archway. A car is visible through the glass door, and a sign is posted on the door. The building is made of dark brick, and there are some plants and a small structure visible on the left and right sides.

JAMES RUSSELL
LOWELL

1870

Sherman Street Historic District
Denver County, CO

21



Sherman Street Historic District
Denver County, CO

* 22



THOMAS
CARLYLE

NO
PARKING
FOR
CARS
EXCEPT
IN
SPACES
MARKED
HEREON

Sherman Street Historic District

Denver County, CO

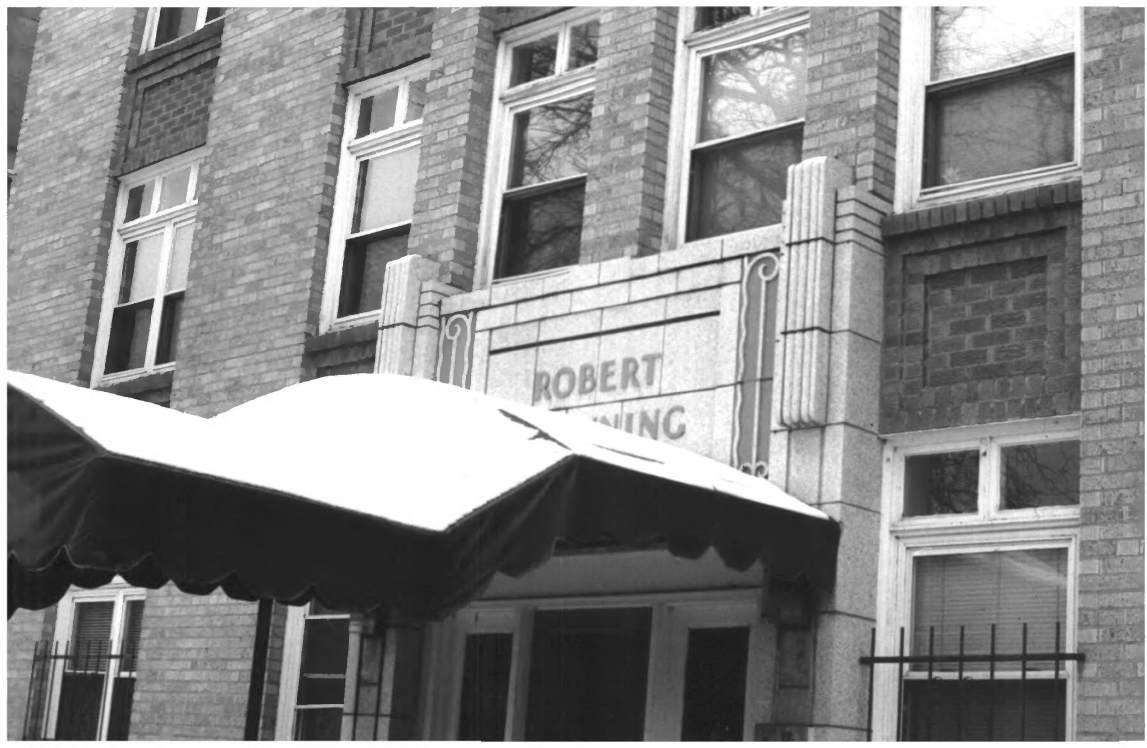
23



Sherman Street Historic District

Denver County, Co

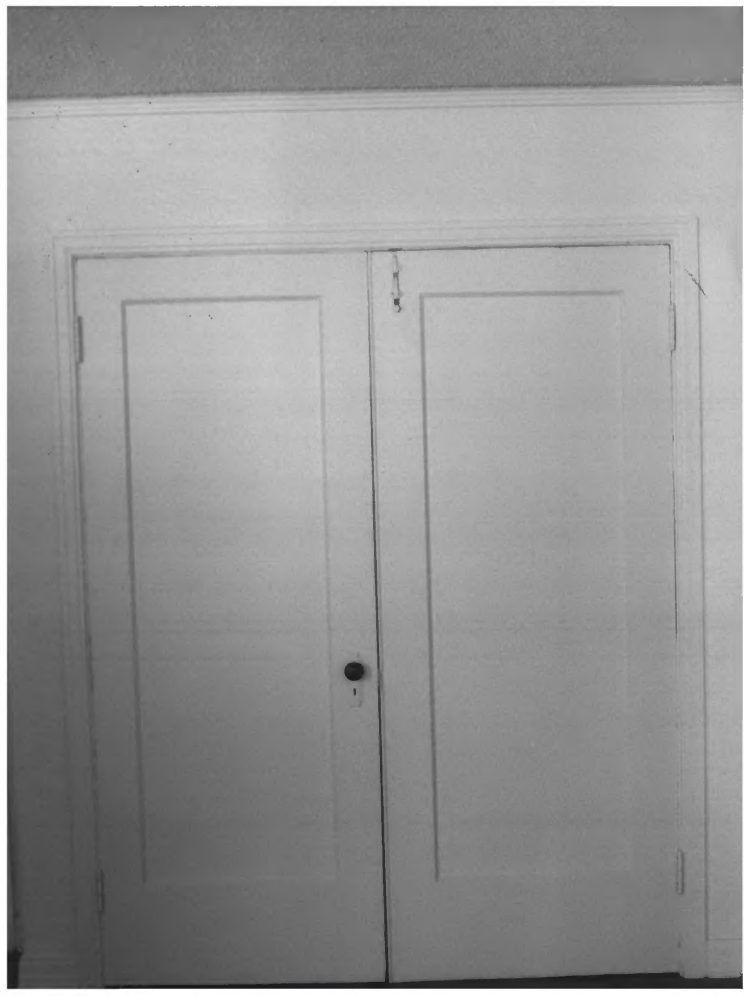
24



ROBERT
MANNING

Sherman Street Historic District
Denver County, Co

#25



Sherman Street Historic District

Denver County, CO

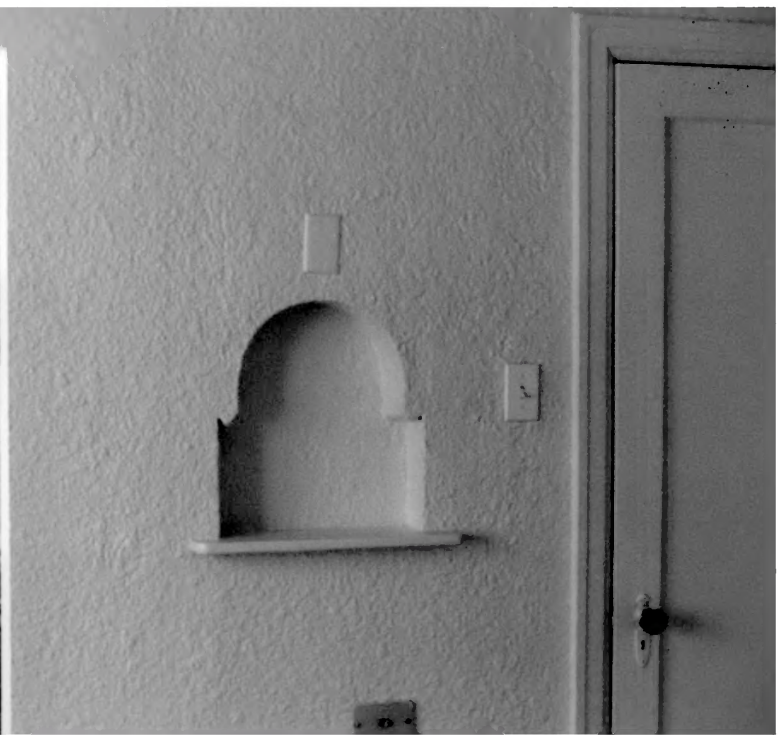
26



Sherman Street Historic District

Denver County, CO

27



Sherman Street Historic District

Denver County, CO

28



Sherman Street Historic District
Denver County, Co.

29



Sherman Street Historic District

Denver County, Co

#30



Sherman

Street History District

Denver

County, Co

31



Sherman Street Historic District

Denver County, CO

32