

1956

United States Department of the Interior
National Park Service

OCT 12 1989

National Register of Historic Places
Registration Form

NATIONAL
REGISTER

This form is for use in nominating or requesting determinations of eligibility for individual properties or districts. See instructions in *Guidelines for Completing National Register Forms* (National Register Bulletin 16). Complete each item by marking "x" in the appropriate box or by entering the requested information. If an item does not apply to the property being documented, enter "N/A" for "not applicable." For functions, styles, materials, and areas of significance, enter only the categories and subcategories listed in the instructions. For additional space use continuation sheets (Form 10-900a). Type all entries.

1. Name of Property

historic name VALLEY HOME

other names/site number Cleveland, Jeremiah, House

2. Location

street & number Potts Road

N/A not for publication

city, town Wartrace

N/A vicinity

state Tennessee

code TN

county Bedford

code 003

zip code 37183

3. Classification

Ownership of Property

- private
- public-local
- public-State
- public-Federal

Category of Property

- building(s)
- district
- site
- structure
- object

Number of Resources within Property

Contributing	Noncontributing	
<u>1</u>	<u>2</u>	buildings
<u> </u>	<u> </u>	sites
<u> </u>	<u> </u>	structures
<u> </u>	<u> </u>	objects
<u>1</u>	<u>2</u>	Total

Name of related multiple property listing:

N/A

Number of contributing resources previously listed in the National Register 0

4. State/Federal Agency Certification

As the designated authority under the National Historic Preservation Act of 1966, as amended, I hereby certify that this nomination request for determination of eligibility meets the documentation standards for registering properties in the National Register of Historic Places and meets the procedural and professional requirements set forth in 36 CFR Part 60. In my opinion, the property meets does not meet the National Register criteria. See continuation sheet.

Richard L. Byers
Signature of certifying official Deputy State Historic Preservation Officer
Tennessee Historical Commission
State or Federal agency and bureau

10/6/89
Date

In my opinion, the property meets does not meet the National Register criteria. See continuation sheet.

Signature of commenting or other official

Date

State or Federal agency and bureau

5. National Park Service Certification

I, hereby, certify that this property is:

- entered in the National Register. See continuation sheet.
- determined eligible for the National Register. See continuation sheet.
- determined not eligible for the National Register.
- removed from the National Register.
- other, (explain:)

Richard L. Byers
Signature of the Keeper

Entered in the
National Register

11/13/89
Date of Action

6. Function or Use

Historic Functions (enter categories from instructions)DOMESTIC: single dwelling

Current Functions (enter categories from instructions)DOMESTIC: single dwelling

7. Description

Architectural Classification

(enter categories from instructions)

OTHER: Greek Revival/Classical Revival

Materials (enter categories from instructions)foundation concrete

walls weatherboard

roof ASPHALT

other WOOD

METAL

Describe present and historic physical appearance.

Located on Potts Road in the eastern section of Bedford County, near the town of Wartrace, Tennessee (pop. 504), Valley Home is a two story frame residence built in a Greek Revival influenced style and later embellished with Classical Revival influenced style. It was built by Jeremiah (Jerry) Cleveland (b. 1806), a native of Greenville, North Carolina. This large house faces west and is constructed on a rectangular plan with an ell to the southeastern rear. The foundation is concrete, the siding is weatherboard, and the hip roof is covered with asphalt shingles. Two interior brick corbelled chimneys pierce the roof, one to the eastern and one to the northwestern sides. The grand pedimented full height portico is supported by two large metal fluted columns with Ionic capitals. A lunette is located within the tympanum and modillions and dentils ornament this section. A one story porch extends the width of the facade and is anchored on the east and west corners by columns identical to those in the central portico, except that these are smaller in scale. Modillions are located under the eaves on all elevations.

The western facade has a symmetrical arrangement, five bays across, with paired nine-over-nine double-hung windows to the southern and northern sides and two nine-over-one double-hung windows flanking the entry. The entry is composed of a large wood wooden door with a single beveled glass panel. The door is surrounded by beveled glass side lights and a transom, and is protected by a circa 1910 screen door. The placement of the windows on the second story match exactly those on the first. The wooden and glass door on the second floor opens to a balcony and is the original door, with the original multi-light sidelights and multi-light transom. This door also features double-leaf screen doors.

The southern elevation of Valley Home is composed of one nine-over-one double-hung window to the front and paired nine-over-one windows to the rear on the first story. The second story window placement is identical. All the windows in Valley Home are circa 1908-1910 replacements for the original four-over four windows.

The northern elevation shows the rear two story ell, original to Valley Home, with a smaller circa 1908-1910 one story ell beyond. The window configuration of this elevation is irregular with the first story featuring four nine-over-one windows, identical in size, and one door to the that was

United States Department of the Interior
National Park ServiceNational Register of Historic Places
Continuation SheetSection number 7 Page 2 Valley Home

converted from a window to a door in the 1908-1910 renovation. The second story of this elevation features four nine-over-nine windows, two to each end and two paired in the center. The one story rear ell is recessed from the main body of the house and includes no windows to the northern elevation.

The eastern rear elevation of Valley Home is irregular and reflects the most recent changes. The original rear configuration showed the first and second story ell extension. The first story ell features one nine-over-one window in the 1908-1910 ell and one nine-over-one double-hung window in the main body of the house. The second story includes one nine-over-one double-hung window in the eastern rear elevation of the ell, a band of pivotal, hinged windows form the 1908-1910 renovation, one small six-over-one window and one nine-over-one double-hung window in the house's main body. In the original arrangement, there was an exterior stair from the first to second story. The current owner has built a recessed addition between the rear ell and the northern elevation.

There is a basement and partial crawl space under the house. When the 1908-1910 renovation occurred, the original foundation, probably cut stone blocks, was removed and the house was re-set on a foundation of concrete.

The interior of Valley Home is composed of ten rooms, five on the first floor and four on the second, with three fireplaces on the first floor and three on the second. In addition, the most recent renovation has added another room to the eastern rear. The first floor interior features wide oak baseboards, oak hardwood floors set on the original chestnut flooring, wide fluted window surrounds, fluted door surrounds with bull's-eye corner blocks, a pocket door between the hall and parlor, three fireplaces, and an oak stair with a paneled stair wall. The wooden walls of both floors were at one time covered with a cloth-backed wallpaper.

Entry is through the wooden paneled and beveled glass door into the large (approximately sixteen by twenty-three feet) central hall with an interior fireplace on the south wall and the staircase on the north wall. This fireplace once had green tiles and a wooden mantel, but during the 1908-1910 renovation the current wooden fireplace was installed. To the south side are two rooms, the library and a bedroom. The library is located in the southwest corner of the house. Its entry is enhanced by plain oak columns resting on paneled oak shelves. It has paired nine-over-nine double-hung windows in the facade and one matching window in the south wall. The floors and baseboards in this room are identical to the rest of the house, with wide board hardwood floors and wide oak baseboards

United States Department of the Interior
National Park ServiceNational Register of Historic Places
Continuation SheetSection number 7 Page 3 Valley Home

throughout. To the east side of the library's columned entrance is a small, circa 1908-1910 built-in oak bookshelf. During the 1908-1910 renovation by Dr. Walker, a door connecting the library and the room immediately to its rear was closed.

To the north side of the central hall, through wooden paneled pocket doors, is the dining-room or parlor. This large rectangular room includes paired windows in the facade identical to those on the opposite side, one nine-over-nine window in the north wall, and one modern glass and metal door which has replaced one of the original windows.

Located along the north wall of the hallway, the oak paneled stair wall houses the stair case. The newel post, the rail, turned millwork spindles, and treads are oak. In the southeast corner of the central hall is a wooden paneled, single-leaf door leading to a bedroom. This room has paired nine-over-one double-hung windows in the south wall. It also contains a corner fireplace with a large decorative oak mantle composed of a heavy wooden shelf and overmantel and a mirror framed by a turned surround with a center medallion above. The fireplace is surrounded by pale yellow-green tile. From this room are two exits; a hall leads across the rear of the house to the kitchen and a door to the east rear addition.

The kitchen is located on the north side of the house directly behind the parlor. In the kitchen is an interior fireplace in the south wall, a door in the south wall leading into the hall, a door leading into a den addition, a door into the rear, a one story ell which has been converted into pantry space, and three nine-over-one double-hung windows in the north wall.

The owner's recent addition to Valley Home is a large one story, rectangular room with multi-light windows in the south and east elevations and one modern door in the east rear wall. On the exterior, this room fits into the space created by the ell and is recessed from the elevation, so that it is an unobtrusive addition.

The second floor contains four bedrooms and two bathrooms. The central hall on the second floor is the same amount of space as on the first. A large landing in the turn of the stair features pivotal, hinged windows from the 1908-1910 renovation. The central hall includes six interior doors, three to the north side, two to the south side, and one to the east which opens into the small bath. Double glass and wooden paneled doors, original to the house, have multi-light sidelights mounted over panels and a multi-light transom and allow access to the second floor balcony. All

United States Department of the Interior
National Park ServiceNational Register of Historic Places
Continuation SheetSection number 7 Page 4 Valley Home

the doors and windows in this second floor hallway feature eave drop moldings.

Two bedrooms are located in the south side and two are located in the north side. All but one of these four bedrooms, the northwest front bedroom, include a fireplace. All four rooms on the second floor feature the same wide board hardwood floors, wide oak window surrounds, fluted door surrounds with bull's-eye corner blocks inside the rooms, and fine examples of graining on the doors and mantels. The room in the northwest front corner of Valley Home has paired nine-over-one windows in its facade and one nine-over-one window in the north wall.

Directly behind this room is another room arranged with paired nine-over-one windows and one nine-over-one window in the north wall, one nine-over-one window in the east rear wall, and a door to the back stair (an addition of the current renovation). In the south wall is a closet and a fireplace. The fireplace mantel is heavy oak with pilasters supporting a turned mantel shelf. The closet door and the wooden paneled single-leaf door leading to the central hall are surrounded by ball and target trim. The doors and mantles are enhanced by fine examples of graining.

Across the hall, to the south side, is a small bath, added in the circa 1908-1910 renovation. It features ceramic tile floors and a small six-over-one double-hung window. The bedroom located in the southwest front corner of Valley Home is similar to the others on the second floor with its paired windows in the facade and the single nine-over-one window in the north side. Also located in this room is a fireplace surrounded by white tile and a heavy oak mantel with pilasters supporting a heavy turned wooden mantel shelf. To the side of this fireplace is a small closet, the door of which is a single-leaf, single-panel wooden door. Next to the closet is the single-leaf paneled door to the hall. Both doors are surrounded by ball and target trim and decorated, along with the mantel, with fine examples of graining.

The room directly behind this room, in the southeast rear of the house, is very much like the others, with one window in the east rear, paired windows in the south side, a door surrounded with fluted trim with bull's-eye corner blocks leading to the hall, a closet in the northwest corner, and a corner fireplace surrounded by white tile. The mantel for this fireplace is slightly more elaborate than the others with its columns on squared bases and dentil ornamentation. As in the other rooms, the doors, surrounds, and mantel have been grained.

**United States Department of the Interior
National Park Service**

**National Register of Historic Places
Continuation Sheet**

Section number 7 Page 5 Valley Home

Valley Home is in excellent condition and its historic elements have been carefully preserved. Current renovation efforts have included a rear addition, the covering of the second story interior walls with dry wall, modernizing the kitchen, and closing off the door from the first floor bedroom to the hall. The house is well sited in a rural location, with several large trees in the front yard. Two outbuildings are located on the property. One is a modern, one-story, L-shaped building which is used for storage and as a work shop. This building has been constructed in sympathy to the original house. It has a low gable roof covered with green and white vinyl siding. The second outbuilding is a shed barn that is covered with plank siding and includes a double-leaf opening in its west facade. The barn was constructed circa 1960 around the original smokehouse. Neither outbuilding contributes to the significance of the property being nominated.

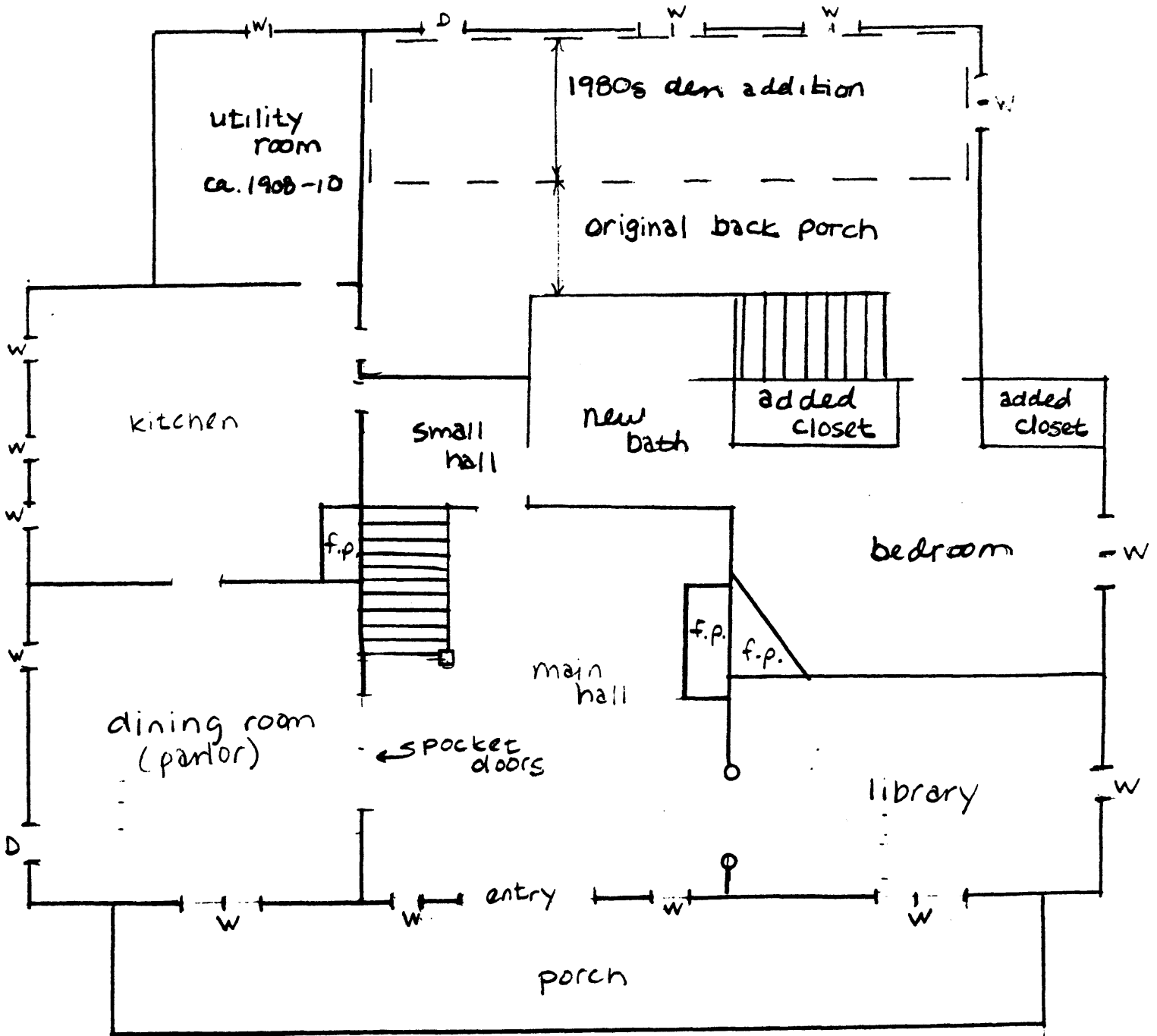
United States Department of the Interior
National Park Service

National Register of Historic Places
Continuation Sheet

Section number 7 Page 6

Valley Home

first floor - not to scale



8. Statement of Significance

Certifying official has considered the significance of this property in relation to other properties:

nationally statewide locally

Applicable National Register Criteria A B C D

Criteria Considerations (Exceptions) A B C D E F G N/A

Areas of Significance (enter categories from instructions)

ARCHITECTURE

Period of Significance

1835; ca. 1908-10

Significant Dates

1835

ca. 1908-10

Cultural Affiliation

N/A

Significant Person

N/A

Architect/Builder

unknown

State significance of property, and justify criteria, criteria considerations, and areas and periods of significance noted above.

Valley Home is a fine example of a Greek Revival influenced 1835 farmhouse that was embellished with Classical Revival details during a circa 1908-1910 renovation. Nominated under criterion C, its prominent features include a grand pedimented portico supported by two-story columns, a five-bay symmetrical facade with paired windows and transomed and sidelighted doors, and modillion and dentil trim. The interior of Valley Home contains numerous wooden fireplace mantels, fluted surrounds with bull's-eye corner blocks, and good examples of graining.

Valley Home is believed to be the second oldest residence in Bedford County, after the Martin House (NR4/14/72) located on Highway 64 near Wartrace. The circa 1810 Martin House is a two-story brick residence with Federal stylistic influence. Two other residences in the Wartrace area are listed in the National Register, the circa 1890 John Green Sims House (NR11/05/87) and the circa 1904 Henry Clark House (NR8/30/85). Both of these houses are examples of Victorian period designs in Bedford County. The Sims House, which was constructed for Jeremiah Cleveland's grandson, has Eastlake detailing, while the Clark House is categorized as Queen Anne. Located within the town's boundaries is "Welcome Home", a circa 1852 weatherboarded Greek Revival residence constructed for Jeremiah Cleveland's daughter and son-in-law. Cleveland's nephew built a fine Victorian period house with Eastlake detailing and interior graining circa 1886. The Cleveland family, beginning with Jeremiah's Valley Home, have left a legacy of at least four early residences in the Wartrace area.

Valley Home was built by Jeremiah Cleveland in 1835. Early records show that this land constituted a portion of a land grant from the state of North Carolina to John Gray Blount and Thomas Blount in 1790. Andrew Erwin bought about twenty thousand acres of this grant and Jeremiah Cleveland, of Greenville, South Carolina, purchased almost fifteen hundred of Erwin's acres in 1814. Jeremiah deeded the land to his son Jeremiah in 1832. In 1833 Jeremiah (the son) married Sarah Elizabeth Stone of Maury County, Tennessee and in 1835 built their house, Valley Home. They had three

See continuation sheet

9. Major Bibliographical References

Edwards, Larry. Information on Cleveland family and deed book records.

Original photographs of ca. 1910 Valley Home provided by the daughter of Dr. John Lane Walker.

- Previous documentation on file (NPS): N/A
- preliminary determination of individual listing (36 CFR 67) has been requested
 - previously listed in the National Register
 - previously determined eligible by the National Register
 - designated a National Historic Landmark
 - recorded by Historic American Buildings Survey # _____
 - recorded by Historic American Engineering Record # _____

See continuation sheet

Primary location of additional data:

- State historic preservation office
- Other State agency
- Federal agency
- Local government
- University
- Other

Specify repository: _____

10. Geographical Data

Acres of property Approximately one acre

UTM References

A

1	6
---	---

5	6	2	2	8	0
---	---	---	---	---	---

3	9	3	1	8	8	0
---	---	---	---	---	---	---

Zone Easting Northing

C

--	--	--	--	--	--	--	--

B

--	--	--	--	--	--	--	--

--	--	--	--	--	--	--	--

--	--	--	--	--	--	--	--

Zone Easting Northing

D

--	--	--	--	--	--	--	--

Wartrace 78 SE

See continuation sheet

Verbal Boundary Description

The boundary is drawn on the accompanying map at a scale of 1"=400'.

See continuation sheet

Boundary Justification

The boundary includes sufficient property to protect the historic setting of the Cleveland residence. It excludes adjacent land that contains modern buildings.

See continuation sheet

11. Form Prepared By

name/title Lynn Hulan & Wanda Johnson date April 10, 1989

organization Hulan Johnson, Inc. telephone (615) 389-6131

street & number Box 245 city or town Wartrace state Tennessee zip code 37183

United States Department of the Interior
National Park ServiceNational Register of Historic Places
Continuation SheetSection number 8 Page 2 Valley Home

children: Sarah Elizabeth born in April 1835, Elizabeth Dawkins born in September 1839, and Thomas Stone. Mrs. Cleveland died in May 1840 and Jeremiah married Mary S. Stone, Sarah's sister, on October 27, 1841. They also had three children: Marry Harriett, Jeremiah Jr., and MARY. The second Mrs. Cleveland died in 1847.

The Cleveland family was one of the earliest settlers in the area and was instrumental in the development of the community. Jeremiah Cleveland contributed financially with an investment of \$50,000 in railroad stock in 1852 and donated a portion of the 1,500 acres he owned for the right-of-way for the Nashville, Chattanooga, and St. Louis Railway to pass through Wartrace. The railroad was a major factor in the growth and development of the community. Work on the railroad began in 1849 and was finished in 1854. In 1853 the community was incorporated and named Wartrace Depot. At this time, the Cleveland family was well established as prominent members of the community. Records show that Jeremiah Cleveland owned fifty slaves in the 1850s, a considerable number. Jeremiah's brother, R.M. Cleveland, Sr. and son, B.F. Cleveland, operated a flour mill at Wartrace and established the First National Bank of Wartrace in 1882. In 1893 a disastrous fire in Wartrace destroyed what was known as the "Cleveland block of buildings". Jeremiah Cleveland died in 1877 while visiting Greenville South Carolina. His body was returned to Wartrace and buried in the family cemetery.

Valley Home had been deeded to Jeremiah's son, Thomas Stone Cleveland in 1867. The property and house stayed in the Cleveland family until 1908, when it was sold to Dr. John Lane Walker and his wife, Leola. Walker planned to convert the house into a hospital and had a lavatory installed in every room; these were removed in the 1950s. The house had been constructed facing east, with the road from Wartrace to Normandy in Bedford County running in front. To avoid the annual flooding from the Garrison River, the road was moved to run behind the house. In 1980-1910 the house was turned around, facing west, with the newly constructed road again in the front. Mules and chains were used to move the house. At that same time the square wooden columns were replaced by round, fluted metal columns with terra cotta Corinthian capitals and cast iron bass. These new columns were set to support the porch in the same place as the original ones. The concrete porch floor is also from the Walker renovation. The nine-over-one replacement windows from circa 1908-1910 have the same placement as the original four-over-four windows. The twentieth century changes to the house added an interesting Classical Revival style to the house and complimented the earlier Greek Revival design. However, because of these

**United States Department of the Interior
National Park Service**

**National Register of Historic Places
Continuation Sheet**

Section number 8 Page 3 Valley Home

changes, the house will not be nominated for its association with Jeremiah Cleveland, although he played a role in the development of Wartrace.

Dr. Walker owned Valley Home for about ten years. In August 1918 he sold the house and land to Albert M. and Mina Dement. Several families have owned it since then.

**United States Department of the Interior
National Park Service**

**National Register of Historic Places
Continuation Sheet**

Section number Photos Page 1 Valley Home

Valley Home
Potts Road
Wartrace, Bedford County, Tennessee 37183
Photos: Lynn Hulan
Date: January 1989
Negs: Tennessee Historical Commission
Nashville, Tennessee

West facade, facing east

#1 of 20

west facade & landscape, facing east

#2 of 20

west facade, facing east

#3 of 20

porch, west facade, facing south

#4 of 20

south elevation, facing north

#5 of 20

south elevation, facing north

#6 of 20

north elevation, facing south

#7 of 20

east rear elevation, facing west

#8 of 20

outbuilding, work room, east rear, facing south

#9 of 20

outbuilding, barn/shed, west facade, facing southeast

#10 of 20

first floor entry hall, fireplace in north wall

#11 of 20

United States Department of the Interior
National Park Service

**National Register of Historic Places
Continuation Sheet**

Section number Photos Page 2 Valley Home

first floor entry hall, stair to second floor
#12 of 20

first floor entry hall, staircase, ca. 1908
#13 of 20

first floor, library, ca. 1908 alteration
#14 of 20

first floor, rear bedroom, corner fireplace
#15 of 20

second floor hall, door to balcony in facade
#16 of 20

second floor, graining, ball & target trim
#17 of 20

second floor, graining on mantel in southeast rear room
#18 of 20

second floor, bedroom, corner fireplace in bedroom on north side
#19 of 20

second floor, bedroom, corner fireplace in bedroom on north side
#20 of 20

United States Department of the Interior
National Park Service

National Register of Historic Places
Continuation Sheet

Section number 10 Page 2 Valley Home

