



Marquam Manor
3211 SW Tenth Avenue

Portland. Multnomah County. Oregon 97201

Location: East Elevation View: West

Copy Negative :

Heritage Investment Corporation
123 NW Second Avenue #200
Portland, Oregon 97209

Jerre Kosta Photography 1992

1 of 13



Sullivan Park
666-0752

Marquam Manor
3211 SW Tenth Avenue
Portland, Multnomah County, Oregon 97201

Location: South Elevation View: North

Copy Negative :

Heritage Investment Corporation
123 NW Second Avenue #200
Portland, Oregon 97209

Jerre Kosta Photography 1992

2 of 13



Marquam Manor
3211 SW Tenth Avenue
Portland, Multnomah County, Oregon 97201

Location: North Elevation View: South

Copy Negative :

Heritage Investment Corporation
123 NW Second Avenue #200
Portland, Oregon 97209

Jerre Kosta Photography 1992

4 of 13



Marquam Manor
3211 SW Tenth Avenue
Portland, Multnomah County, Oregon 97201

Location: Northwest Corner Elevation

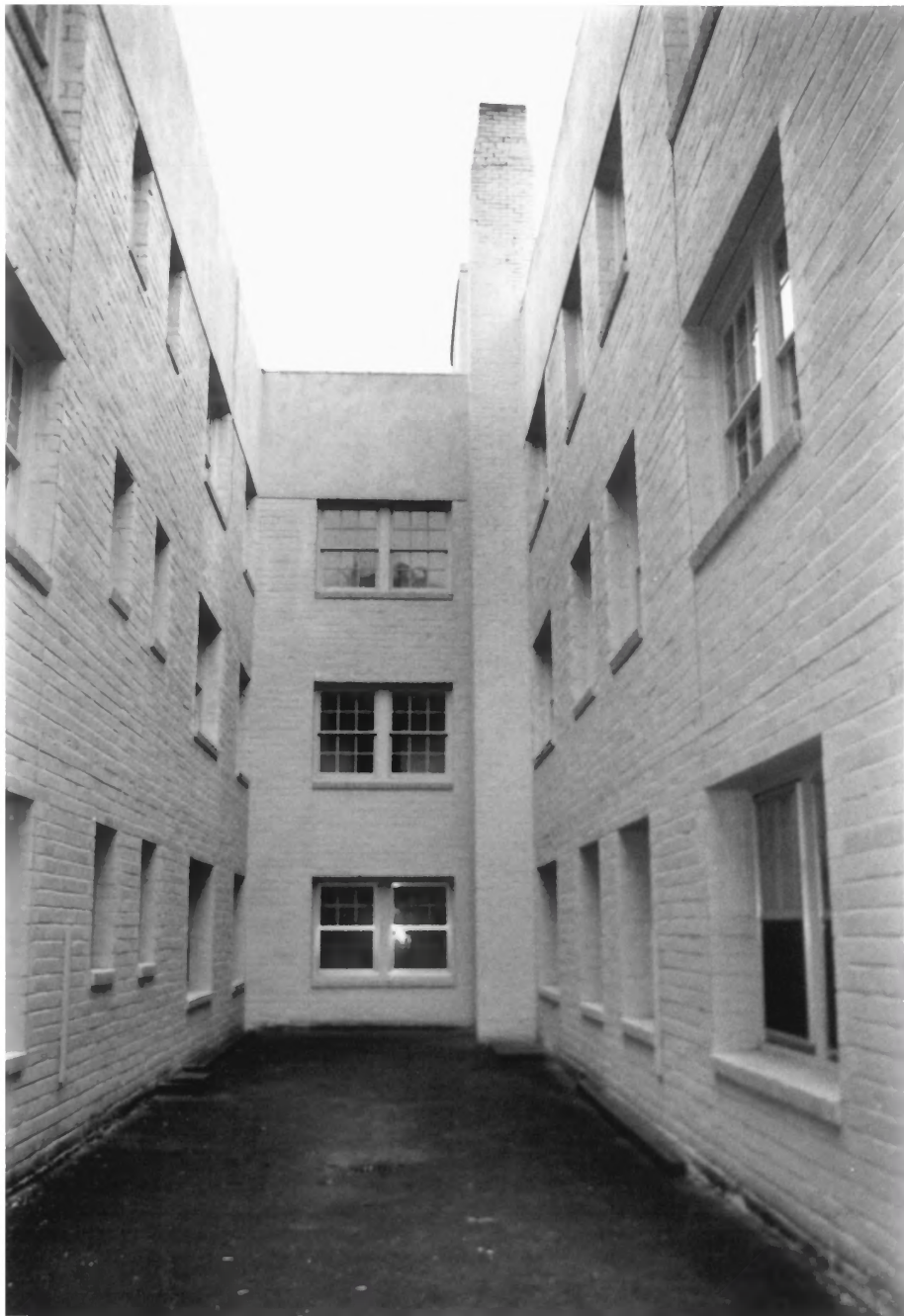
View: Southwest

Copy Negative :

Heritage Investment Corporation
123 NW Second Avenue #200
Portland, Oregon 97209

Jerre Kosta Photography 1992

4 of 13



Marquam Manor
3211 SW Tenth Avenue
Portland, Multnomah County, Oregon 97201

Location: West Elevation Detail View: East

Copy Negative :

Heritage Investment Corporation
123 NW Second Avenue #200
Portland, Oregon 97209

Jerre Kosta Photography 1992

5 of 13

MARQUAM MANOR



Marquam Manor
3211 SW Tenth Avenue
Portland, Multnomah County, Oregon 97201

Location: Exterior Detail, Entry View: West

Copy Negative :

Heritage Investment Corporation
123 NW Second Avenue #200
Portland, Oregon 97209

Jerre Kosta Photography 1992

6 of 13



Marquam Manor
3211 SW Tenth Avenue
Portland, Multnomah County, Oregon 97201

Location: Interior Detail, Entry View: East

Copy Negative :

Heritage Investment Corporation
123 NW Second Avenue #200
Portland, Oregon 97209

Jerre Kosta Photography 1992

7 of 13



Marquam Manor
3211 SW Tenth Avenue
Portland, Multnomah County, Oregon 97201

Location: Interior, First Floor Corridor
View: North

Copy Negative :

Heritage Investment Corporation
123 NW Second Avenue #200
Portland, Oregon 97209

Jerre Kosta Photography 1992

8 of 13



Marquam Manor
3211 SW Tenth Avenue
Portland, Multnomah County, Oregon 97201

Location: Interior, First Floor Stairway
View: South

Copy Negative :

Heritage Investment Corporation
123 NW Second Avenue #200
Portland, Oregon 97209

Jerre Kosta Photography 1992

9 of 13



Marquam Manor
3211 SW Tenth Avenue
Portland, Multnomah County, Oregon 97201

Location: Interior, Fourth Floor Corridor View: West

Copy Negative :

Heritage Investment Corporation
123 NW Second Avenue #200
Portland, Oregon 97209

Jerre Kosta Photography 1992

10 of 13



Marquam Manor
3211 SW Tenth Avenue
Portland, Multnomah County, Oregon 97201

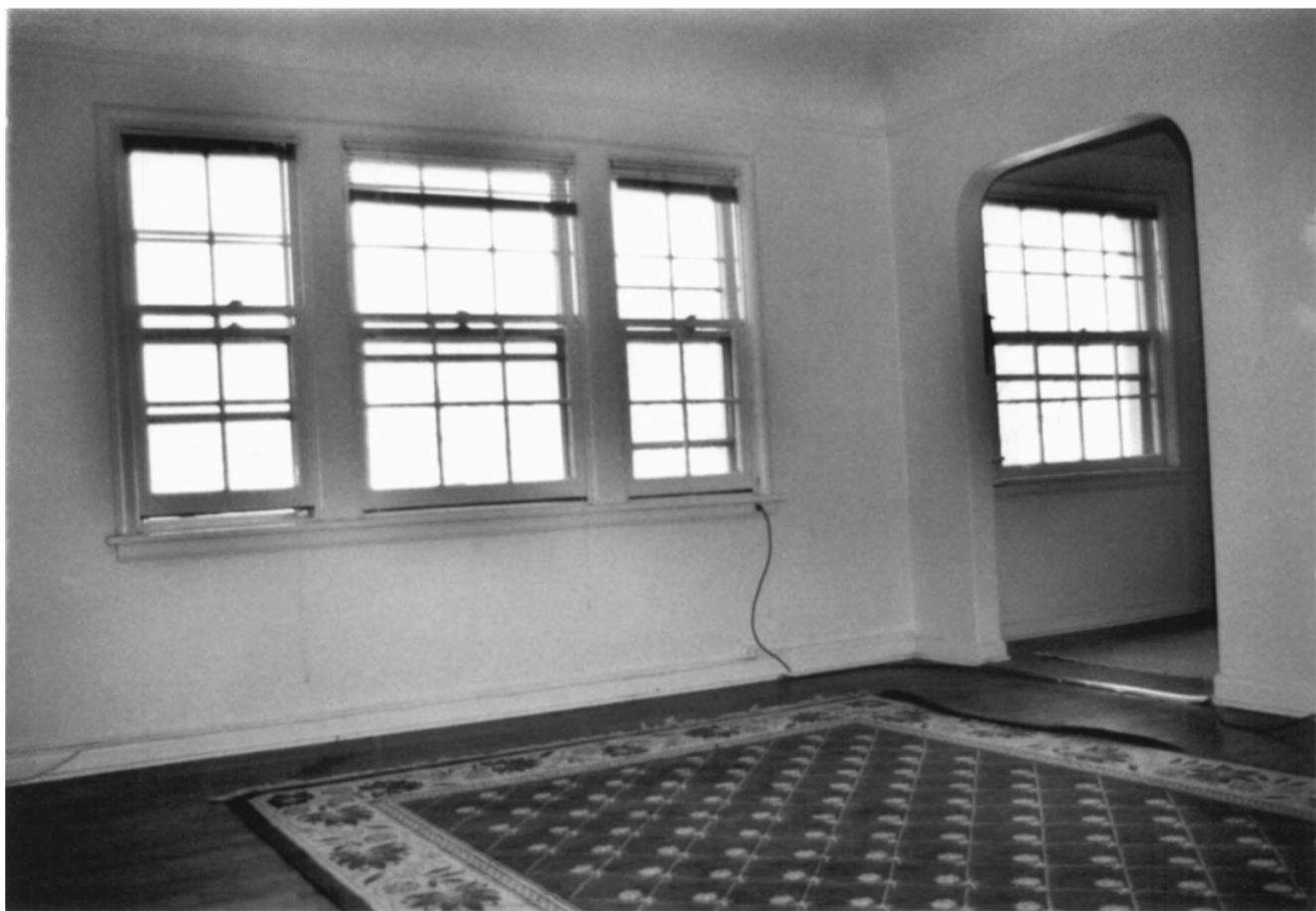
Location: Interior Detail, Doorway

Copy Negative :

Heritage Investment Corporation
123 NW Second Avenue #200
Portland, Oregon 97209

Jerre Kosta Photography 1992

11 of 13



Marquam Manor
3211 SW Tenth Avenue
Portland, Multnomah County, Oregon 97201

Location: Fourth Floor, Typical Interior

View: Southeast

Copy Negative :

Heritage Investment Corporation
123 NW Second Avenue #200
Portland, Oregon 97209

Jerre Kosta Photography 1992

12 of 13



Marquam Manor
3211 SW Tenth Avenue
Portland, Multnomah County, Oregon 97201

Location: Fourth Floor, Typical Interior
View: West

Copy Negative :

Heritage Investment Corporation
123 NW Second Avenue #200
Portland, Oregon 97209

Jerre Kosta Photography 1992

13 of 13