



ZENITH
THE QUALITY OF OUR TV
IS THE QUALITY OF OUR PAT'S TV

32
↓

23
NO PARKING
EXCEPT
FOR THE
PURPOSES
OF THE
POLICE

FELDMANN

28

NO LEFT TURN

NO PARKING

NO PARKING

NO PARKING

NO PARKING

NO PARKING

NO PARKING

NO PARKING

NO PARKING

NO PARKING

NO PARKING

NO PARKING

NO PARKING

NO PARKING

NO PARKING

NO PARKING

NO PARKING

NO PARKING

NO PARKING

NO PARKING

NO PARKING

NO PARKING

NO PARKING

NO PARKING

NO PARKING

Downtown Historic District
Sheboygan Falls, Wisconsin
Pine Street, looking straight east
Photo by Martin Eigenberger, August, 1984
Neg. in possession of photographer
Photo # 1 of 42



Downtown Historic District

Sheboygan Falls, Wisconsin

639 Monroe Street

View from southeast

Photo by Uel C. Ramey, December, 1983

Neg. in possession of photographer

Photo # 2 of 42



Downtown Historic District

Sheboygan Falls, Wisconsin

Wiesse Tannery, 334 Broadway

View from southeast

Photo by Uel C. Ramey, December, 1983

Neg. in possession of photographer

Photo # **3** of **42**



G&B FOODS
RESTAURANT

Coca-Cola

MILWAUKEE
STANDARD

HOURS
MON-FRIDAY
10:00-11:00 PM
SAT-SUN
10:00-11:00 PM

OPEN
AM 2 4 8 PM

Phone 45

Downtown Historic District

Sheboygan Falls, Wisconsin

334 Broadway, view from southwest

Photo by Martin Eigenberger, August, 1984

Neg. in possession of photographer

Photo # 4 of 42



Downtown Historic District

Sheboygan Falls, Wisconsin

Old tannery shed, behind 404 Broadway

Photo by Martin Eigenberger, August, 1984

Neg. in possession of photographer

Photo # 5 of 42



Downtown Historic District
Sheboygan Falls, Wisconsin
334 Broadway, looking north out of district
Photo by Martin Eigenberger, August, 1984
Neg. in possession of photographer
Photo # 6 of 42

ART'S

BARBER
SHOP

COLLECTIONS
PARLOR

FOR SALE
BY
OWNER
467-4629

412A

OPEN
SATURDAYS
8AM - 2PM

OPEN
THURSDAY
NIGHTS

CLOSED

KOHLHAGEN - SHERIFF

KOHLHAGEN
SHERIFF

ART'S
BARBER SHOP
459-9550

THE ORIGINAL
Pabst
Blue Ribbon



Downtown Historic District

Sheboygan Falls, Wisconsin

414 Broadway, view from westnorthwest

Photo by Martin Eigenberger, August, 1984

Neg. in possession of photographer

Photo # 7 of 42



EAST
28
→

BADGER STATE
...
FENCING

BARBER SHOP

FORD

Downtown Historic District

Sheboygan Falls, Wisconsin

416 - 420 Broadway

View from Southwest

Photo by Uel Ramey, December, 1983

Neg. in possession of photographer

Photo # **8** of **42**



Downtown Historic District

Sheboygan Falls, Wisconsin

638 Monroe St., from southwest

Photo by Martin Eigenberger, August, 1984

Neg. in possession of photographer

Photo # 9 of 42



Downtown Historic District

Sheboygan Falls, Wisconsin

Monroe St. Bridge, from westsouthwest

Looking outside of district

Photo by Martin Eigenberger, August, 1984

Neg. in possession of photographer

Photo # 10 of 42



Downtown Historic District

Sheboygan Falls, Wisconsin

504 Broadway

View from West

Photo by Uel C. Ramey, December, 1983

Nêg. in possession of photographer

Photo # 11 of 42



Downtown Historic District

Sheboygan Falls, Wisconsin

506 Pine Street, non-contributing

Photo by Martin Eigenberger, August, 1984

Neg. in possession of photographer

Photo # 12 of 42



Downtown Historic District

Sheboygan Falls, Wisconsin

506 - 514 Broadway

View from southwest

Photo by Uel C. Ramey, December, 1983

Neg. in possession of photographer

Photo # **13** of **42**



RICK'S HOUSE OF FLOWERS

Flowers 

ESSER'S
PAINT
WALLS GLASS
SERVICE INC.

No Right Turn

Press
Info

Downtown Historic District

Sheboygan Falls, Wisconsin

600 Broadway, view from northwest

Photo by Martin Eigenberger, August, 1984

Neg. in possession of photographer

Photo # 14 of 42

ESSERS
PAINT
FULLS GLASS
SERVICE INC.



Downtown Historic District
Sheboygan Falls, Wisconsin
600 Broadway and buildings to south, looking
outside of district

Photo by Martin Eigenberger, August, 1984

Neg. in possession of photographer

Photo # **15** of **42**



Downtown Historic District
Sheboygan Falls, Wisconsin
Broadway, east side, just south of district
Photo by Martin Eigenberger, August, 1984
Neg. in possession of photographer
Photo # ~~16~~ of 42



Downtown Historic District
Sheboygan Falls, Wisconsin
Northwest corner, Monroe and Broadway
Looking outside the district
Photo by Martin Eigenberger, Neg. in
Possession of photographer
Photo # 17 of 42 August, 1984



Downtown Historic District

Sheboygan Falls, Wisconsin

507-513 Broadway

View from Eastsoutheast

Photo by Uel. C. Ramey, December, 1983

Neg. in possession of photographer

Photo # **18** of **42**



Downtown Historic District
Sheboygan Falls, Wisconsin
Broadway, west side, looking to the south
outside the district

Photo by Martin Eigenberger, August, 1984
Neg. in possession of photographer

Photo # 19 of 42



Downtown Historic District

Sheboygan Falls, Wisconsin

100-222 Pine Street, view from southeast

Photo by Martin Eigenberger, August, 1984

Neg. in possession of photographer

Photo # 20 of 42



LAGER

SOUTH

32

2 HOUR PARKING
8AM TO 4PM
FRIDAY
8AM TO 9PM
EXCEPT
SUN AND HOLS

HERITAGE ROOM
USE TAVERN ENTRANCE

1921

Downtown Historic District

Sheboygan Falls, wisconsin

124A Pine Street, non-contributing building

Photo by Martin Eigenberger, August, 1984

Neg. in possession of photographer

Photo # 21 of 42



Downtown Historic District

Sheboygan Falls, Wisconsin

118 - 124 Pine Street

View from southwest

Photo by Uel C. Ramey, December, 1983

Neg. in possession of photographer

Photo # **22** of **42**



Downtown Historic District
Sheboygan Falls, Wisconsin
Garage behind 118 Pine, non-contributing
Photo by Martin Eigenberger, August, 1984
Neg. in possession of photographer
Photo # 23 of 42



Mobil Service

LIFETIME SUPPLIES

HILLS PROFESSIONAL BUILDING

No Right Turn

Downtown Historic District
Sheboygan Falls, Wisconsin
Northeast corner, Buffalo and Monroe
Looking outside the district
Photo by Martin Eigenberger, August, 1984
Neg. in possession of photographer
Photo # **24** of **42**

 Citizens Bank

BANKING



Downtown Historic District

Sheboygan Falls, Wisconsin

Northwest corner, Buffalo and Monroe

Looking outside the district

Photo by Martin Eigenberger, August, 1984

Neg. in possession of photographer

Photo # **25** of **42**



Downtown Historic District

Sheboygan Falls, Wisconsin

202 - 208 Pine Street

View from southeast

Photo by Uel C. Ramey, December, 1983

Neg. in possession of photographer

Photo # 26 of 42



Downtown Historic District
Sheboygan Falls, Wisconsin
212-218 Pine St., view from southsouthwest
non-contributing buildings *just out of district*
Photo by Martin Eigenberger, August, 1984
Neg. in possession of photographer
Photo # **27** of **42**



Downtown Historic District

Sheboygan Falls, Wisconsin

222 Pine Street, view from southwest

Photo by Martin Eigenberger, August, 1984

Neg. in possession of photographer

Photo # 28 of 42

outside of district



2 HOUR
PARKING
8AM TO 6PM
FRIDAY
8AM TO 9PM
EXCEPT
SUN AND HOL



Downtown Historic District

Sheboygan Falls, Wisconsin

302 Pine St., view from SE, *outside of district*

Photo by Martin Eigenberger, August, 1984

Neg. in possession of photographer

Photo # 29 of 42



Downtown Historic District

Sheboygan Falls, Wisconsin

304 Pine Street, view from south

Photo by Martin Eigenberger, August, 1984

Neg. in possession of photographer

Photo # 30 of 42

outside of district



Downtown Historic District

Sheboygan Falls, Wisconsin

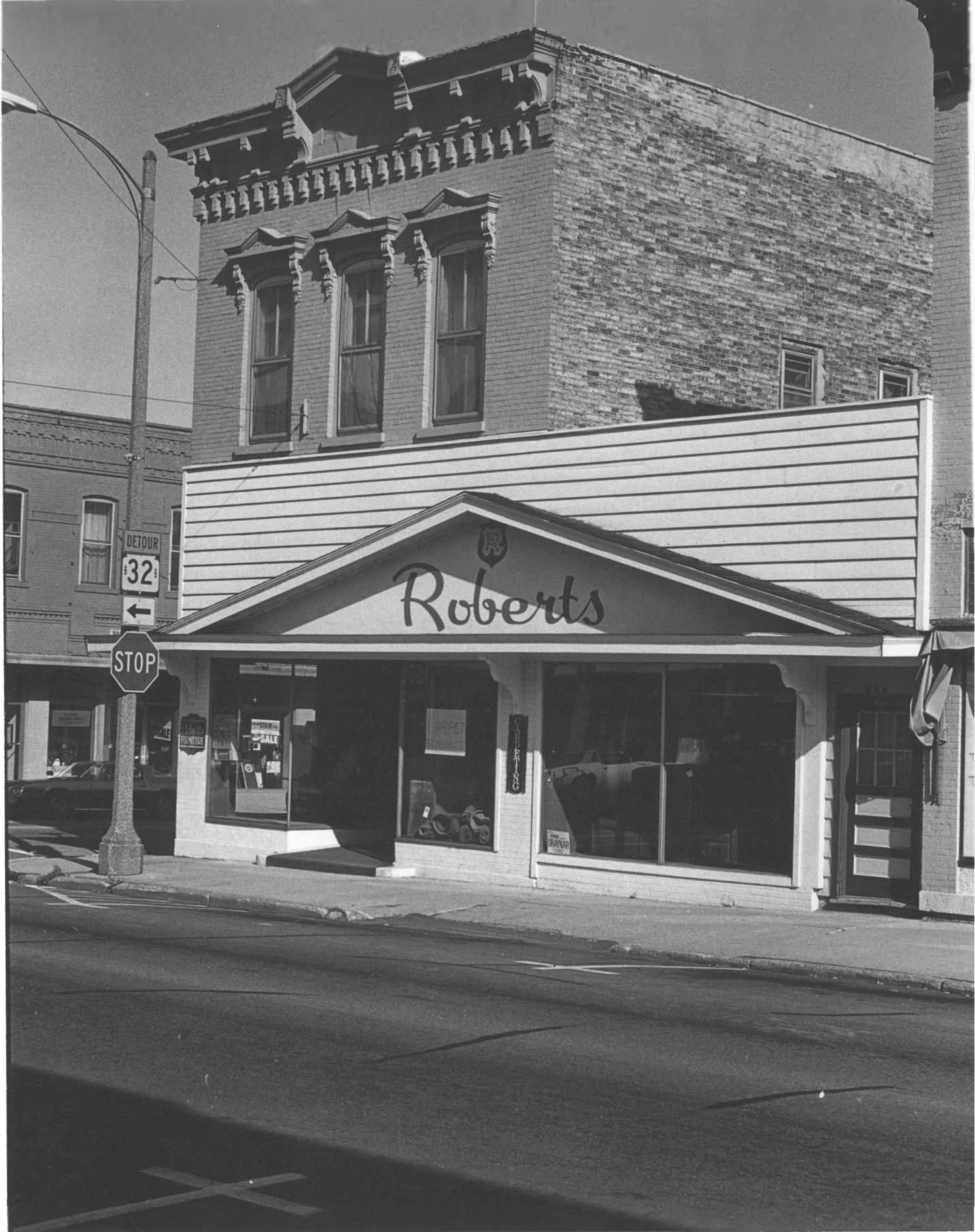
306-310 Pine Street, view from south

Photo by Martin Eigenberger, August, 1984

Neg. in possession of photographer

Photo # 31 of 42

outside of district



DETOUR

32

←

STOP

Roberts

R

CARPET SALE

CARPET

CARPETING

CARPET

DOOR

Downtown Historic District

Sheboygan Falls, Wisconsin

101 Pine Street, view from northwest

Photo by Martin Eigenberger, August, 1984

Neg. in possession of photographer

Photo # **32** of **42**



Downtown Historic District

Sheboygan Falls, Wisconsin

101 - 217 Pine St., view from northeast

Photo by Martin Eigenberger, August, 1984

Neg. in possession of photographer

Photo # **33** of **42**



schönes haus

111

111
28

2
BANK OF AMERICA
111
111

Downtown Historic District

Sheboygan Falls, Wisconsin

111 Pine Street, non-contributing building

Photo by Martin Eigenberger, August, 1984

Neg. in possession of photographer

Photo # 34 of 42



Downtown Historic District

Sheboygan Falls, Wisconsin

117 Pine St., non-contributing building

Photo by Martin Eigenberger, August, 1984

Neg. in possession of photographer

Photo # **35** of **42**



Downtown Historic District

Sheboygan Falls, Wisconsin

Buffalo St., east side, looking south
outside of district

Photo by Martin Eigenberger, August, 1984

Neg. in possession of photographer

Photo # **36** of **42**



Downtown Historic District

Sheboygan Falls, Wisconsin

203 Pine St., from northeast, looking
south along west side of Buffalo out-
side of district

Photo by Martin Eigenberger, August, 1984

Neg. in possession of photographer

Photo # **37** of **42**



ZENITH
THE QUALITY GOES IN
BEFORE THE WAVE GOES ON
PAT'S TV

No Left Turn

3

150

USED TV'S

Downtown Historic District

Sheboygan Falls, Wisconsin

203 Pine Street

View from Northeast

Photo by Uel C. Ramey, December, 1983

Neg. in possession of photographer

Photo # **38** of **42**



Downtown Historic District

Sheboygan Falls, Wisconsin

215 - 217 Pine Street

View from Northeast

Photo by Uel C. Ramey, December, 1983

Neg. in possession of photographer

Photo # 39 of 42



127
PINE STREET

Downtown Historic District
Sheboygan Falls, Wisconsin
602 Detroit St., view from northwest
Photo by Martin Eigenberger, August, 1984
Neg. in possession of photographer
Photo # 40 of 42



Downtown Historic District
Sheboygan Falls, Wisconsin
602 Detroit St., looking southsoutheast
outside of district

Photo by Martin Eigenberger, August, 1984

Neg. in possession of photographer

Photo # 41 of 42



Downtown Historic District

Sheboygan Falls, Wisconsin

West side of Detroit, south of Pine,
outside of district

Photo by Martin Eigenberger, August, 1984

Neg. in possession of photographer

Photo # 42 of 42