



UNITED STATES DEPARTMENT OF THE INTERIOR  
NATIONAL PARK SERVICE

**NATIONAL REGISTER OF HISTORIC PLACES  
PROPERTY PHOTOGRAPH FORM**

FOR NPS USE ONLY  
RECEIVED MAR 25 1975  
DATE ENTERED APR 14 1975

SEE INSTRUCTIONS IN *HOW TO COMPLETE NATIONAL REGISTER FORMS*  
TYPE ALL ENTRIES ENCLOSE WITH PHOTOGRAPH

**1 NAME**

HISTORIC Ott's Assay Office/South Yuba Canal Office

AND/OR COMMON same

**2 LOCATION**

CITY, TOWN Nevada City VICINITY OF COUNTY Nevada STATE California

**3 PHOTO REFERENCE**

PHOTO CREDIT Nevada County Historical Landmarks Comm. DATE OF PHOTO ca. 1970

NEGATIVE FILED AT Nevada County Historical Landmarks Commission  
529 East Broad Street, Nevada City, California 95959

**4 IDENTIFICATION**

DESCRIBE VIEW, DIRECTION, ETC. IF DISTRICT, GIVE BUILDING NAME & STREET

**PROPERTY OF THE NATIONAL REGISTER**

#1034 South Yuba Canal Office (left) and Ott's Assay Office (right)  
before start of restoration. View looking northeast.



UNITED STATES DEPARTMENT OF THE INTERIOR  
NATIONAL PARK SERVICE

**NATIONAL REGISTER OF HISTORIC PLACES  
PROPERTY PHOTOGRAPH FORM**

FOR NPS USE ONLY

RECEIVED MAR 25 1975

DATE ENTERED APR 14 1975

SEE INSTRUCTIONS IN *HOW TO COMPLETE NATIONAL REGISTER FORMS*  
TYPE ALL ENTRIES ENCLOSE WITH PHOTOGRAPH

**1 NAME**

HISTORIC Ott's Assay Office/South Yuba Canal Office

AND/OR COMMON same

**2 LOCATION**

CITY, TOWN Nevada City

\_\_\_\_VICINITY OF

COUNTY Nevada

STATE California

**3 PHOTO REFERENCE**

PHOTO CREDIT Robert Wyckoff

DATE OF PHOTO January 20, 1975

NEGATIVE FILED AT City of Nevada City, 317 Broad Street, Nevada City, California 95959

**4 IDENTIFICATION**

DESCRIBE VIEW, DIRECTION, ETC. IF DISTRICT, GIVE BUILDING NAME & STREET

PHOTO NO.

Back view of building looking southwesterly.

# 2084

**PROPERTY OF THE NATIONAL REGISTER**



UNITED STATES DEPARTMENT OF THE INTERIOR  
NATIONAL PARK SERVICE

**NATIONAL REGISTER OF HISTORIC PLACES  
PROPERTY PHOTOGRAPH FORM**

FOR NPS USE ONLY

RECEIVED MAR 25 1975

DATE ENTERED APR 14 1975

SEE INSTRUCTIONS IN *HOW TO COMPLETE NATIONAL REGISTER FORMS*  
TYPE ALL ENTRIES ENCLOSE WITH PHOTOGRAPH

**1 NAME**

HISTORIC Ott's Assay Office/South Yuba Canal Office

AND/OR COMMON

same

**2 LOCATION**

CITY, TOWN Nevada City

\_\_\_\_VICINITY OF

COUNTY Nevada

STATE California

**3 PHOTO REFERENCE**

PHOTO CREDIT Robert Wyckoff

DATE OF PHOTO January 19, 1975

NEGATIVE FILED AT City of Nevada City, 317 Broad Street, Nevada City, California 95959

**4 IDENTIFICATION**

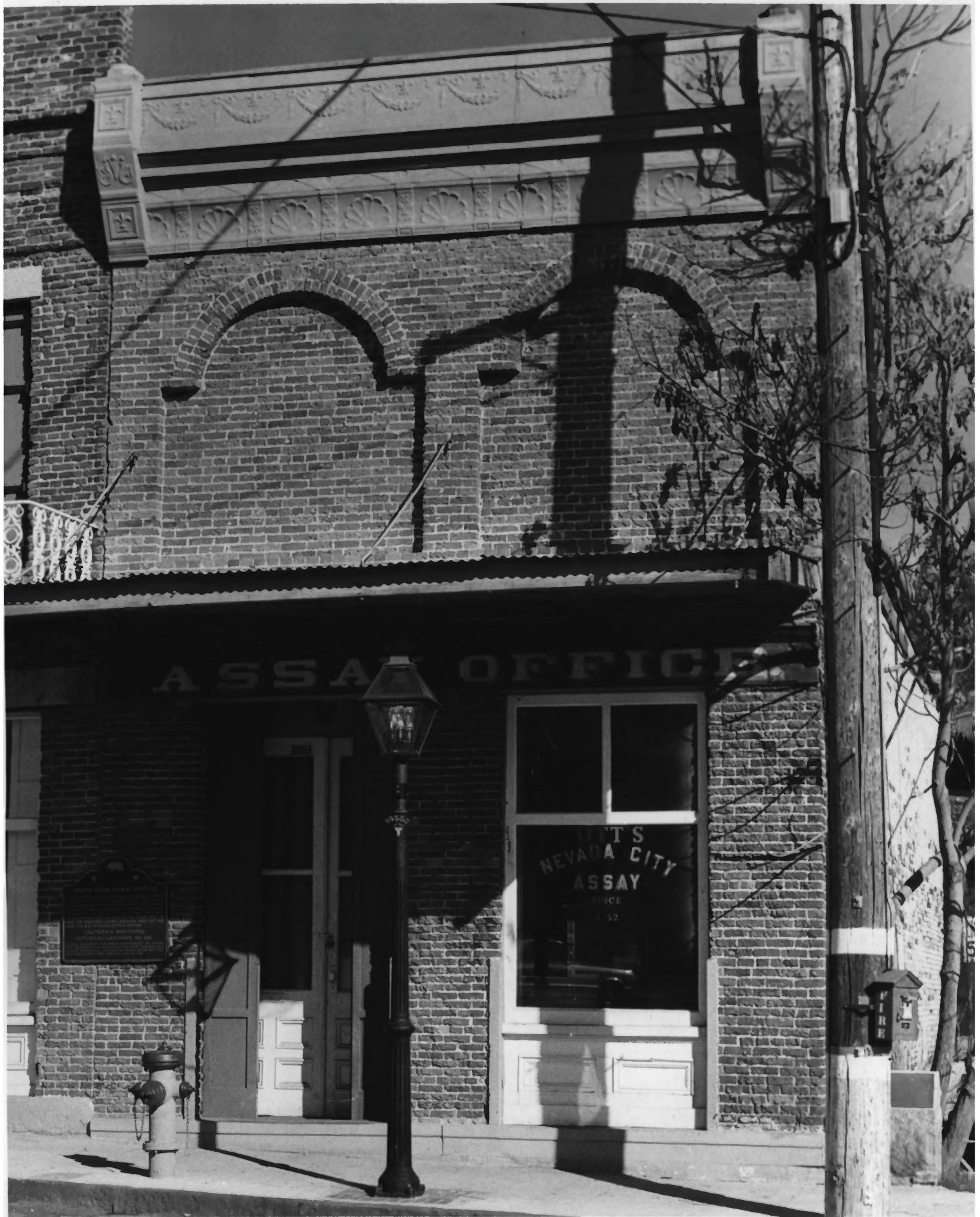
DESCRIBE VIEW, DIRECTION, ETC. IF DISTRICT, GIVE BUILDING NAME & STREET

PHOTO NO.

Interior view of Ott's Assay Office looking toward front of building.

#3084

**PROPERTY OF THE NATIONAL REGISTER**



ASSAY OFFICE

1850

NEVADA CITY  
ASSAY  
OFFICE  
SINCE  
1852

PLAQUE

UNITED STATES DEPARTMENT OF THE INTERIOR  
NATIONAL PARK SERVICE

**NATIONAL REGISTER OF HISTORIC PLACES  
PROPERTY PHOTOGRAPH FORM**

FOR NPS USE ONLY

RECEIVED MAR 25 1975

DATE ENTERED APR 14 1975

SEE INSTRUCTIONS IN *HOW TO COMPLETE NATIONAL REGISTER FORMS*  
TYPE ALL ENTRIES ENCLOSE WITH PHOTOGRAPH

**1 NAME**

HISTORIC Ott's Assay Office/South Yuba Canal Office

AND/OR COMMON

same

**2 LOCATION**

CITY, TOWN Nevada City

\_\_\_ VICINITY OF

COUNTY Nevada

STATE California

**3 PHOTO REFERENCE**

PHOTO CREDIT Robert Wyckoff

DATE OF PHOTO January 19, 1975

NEGATIVE FILED AT City of Nevada City, 317 Broad Street, Nevada City, California 95959

**4 IDENTIFICATION**

DESCRIBE VIEW, DIRECTION, ETC. IF DISTRICT. GIVE BUILDING NAME & STREET

PHOTO NO.

Front of Ott's Assay Office looking east.

#4084

PROPERTY OF THE NATIONAL REGISTER