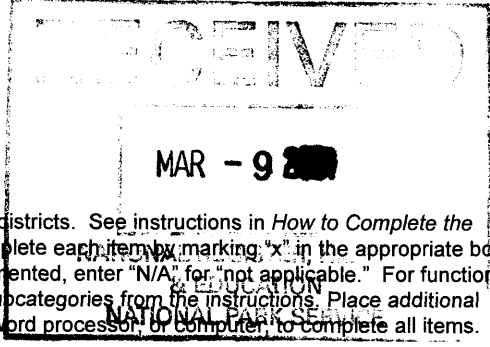


United States Department of the Interior  
National Park Service

National Register of Historic Places  
Registration Form

381



This form is for use in nominating or requesting determinations for individual properties and districts. See instructions in *How to Complete the National Register of Historic Places registration Form* (National Register Bulletin 16A). Complete each item by marking "X" in the appropriate box or by entering the information requested. If an item does not apply to the property being documented, enter "N/A" for "not applicable." For functions, architectural classification, materials, and areas of significance, enter only categories and subcategories from the instructions. Place additional entries and narrative items on continuation sheets (NPS Form 10-900a). Use a typewriter, word processor, or computer to complete all items.

1. Name of Property

historic name Bachman, Nathan L., School  
other names/site number N/A

2. Location

street & number 2815 Anderson Pike  N/A not for publication  
city or town Walden  N/A vicinity  
state Tennessee code TN county Hamilton code 065 zip code 37377

3. State/Federal Agency Certification

As the designated authority under the National Historic Preservation Act, as amended, I hereby certify that this  nomination  request for determination of eligibility meets the documentation standards for registering properties in the National Register of Historic Places and meets the procedural and professional requirements set for in 36 CFR Part 60. In my opinion, the property  meets  does not meet the National Register criteria. I recommend that this property be considered significant  nationally  statewide  locally. (See continuation sheet for additional comments.)

Herbert C. Hanger 2/27/01  
Signature of certifying official/Title Date  
Deputy State Historic Preservation Officer, Tennessee Historical Commission  
State or Federal agency and bureau

In my opinion, the property  meets  does not meet the National Register criteria. ( See Continuation sheet for additional comments.)

\_\_\_\_\_  
Signature of certifying official/Title Date  
\_\_\_\_\_  
State or Federal agency and bureau

4. National Park Service Certification

I hereby certify that the property is:

- entered in the National Register.  
 See continuation sheet
- determined eligible for the National Register.  
 See continuation sheet
- determined not eligible for the National Register
- removed from the National Register.
- other,

\_\_\_\_\_  
Signature of the Keeper

\_\_\_\_\_  
Date of Action

B. H. Savage 4/17/01

(explain:)  
\_\_\_\_\_  
\_\_\_\_\_

**5. Classification**

**Ownership of Property**  
(Check as many boxes as apply)

**Category of Property**  
(Check only one box)

**Number of Resources within Property**  
(Do not include previously listed resources in count)

- private
- public-local
- public-State
- public-Federal

- building(s)
- district
- site
- structure
- object

Contributing	Noncontributing	
1		buildings
1	1	sites
		structures
		objects
2	1	Total

**Name of related multiple property listing**  
(Enter "N/A" if property is not part of a multiple property listing.)

**Number of Contributing resources previously listed in the National Register**

N/A

0

**6. Function or Use**

**Historic Functions**  
(Enter categories from instructions)

**Current Functions**  
(Enter categories from instructions)

EDUCATION: school

VACANT NOT IN USE  
WORK IN PROGRESS

**7. Description**

**Architectural Classification**  
(Enter categories from instructions)

**Materials**  
(Enter categories from instructions)

Colonial Revival

foundation BRICK/CONCRETE  
walls BRICK  
CONCRETE  
roof ASPHALT  
other WOOD  
METAL

**Narrative Description**

(Describe the historic and current condition of the property on one or more continuation sheets.)

**8. Statement of Significance**

**Applicable National Register Criteria**

(Mark "x" in one or more boxes for the criteria qualifying the property for National Register listing.)

- A** Property is associated with events that have made a significant contribution to the broad patterns of our history.
- B** Property is associated with the lives of persons significant in our past.
- C** Property embodies the distinctive characteristics of a type, period, or method of construction or represents the work of a master, or possesses high artistic values, or represents a significant and distinguishable entity whose components lack individual distinction.
- D** Property has yielded, or is likely to yield, information important in prehistory or history.

**Criteria Considerations** N/A

(Mark "x" in all boxes that apply.)

Property is:

- A** owned by a religious institution or used for religious purposes.
- B** removed from its original location.
- C** moved from its original location.
- D** a cemetery.
- E** a reconstructed building, object, or structure.
- F** a commemorative property
- G** less than 50 year of age or achieved significance within the past 50 years.

**Areas of Significance**

(Enter categories from instructions)

SOCIAL HISTORY  
 ARCHITECTURE  
 \_\_\_\_\_  
 \_\_\_\_\_  
 \_\_\_\_\_

**Period of Significance**

1937-1955  
 \_\_\_\_\_  
 \_\_\_\_\_

**Significant Dates**

1937  
 \_\_\_\_\_  
 \_\_\_\_\_

**Significant Person**

(complete if Criterion B is marked)

N/A

**Cultural Affiliation**

N/A  
 \_\_\_\_\_  
 \_\_\_\_\_

**Architect/Builder**

Hunt, R. H., and Company, Architects  
 Condra, R. M. & Company, Contractor

**Narrative Statement of Significance**

(Explain the significance of the property on one or more continuation sheets.)

**9. Major Bibliographical References**

**Bibliography**

(Cite the books, articles, and other sources used in preparing this form on one or more continuation sheets.)

**Previous documentation on file (NPS):** N/A

- preliminary determination of individual listing (36 CFR 67) has been requested
- previously listed in the National Register
- Previously determined eligible by the National Register
- designated a National Historic Landmark
- recorded by Historic American Buildings Survey # \_\_\_\_\_
- recorded by Historic American Engineering Record # \_\_\_\_\_

**Primary location of additional data:**

- State Historic Preservation Office
- Other State Agency
- Federal Agency
- Local Government
- University
- Other

Name of repository: \_\_\_\_\_

Bachman, Nathan L., School  
Name of Property

Hamilton County, Tennessee  
County and State

---

### 10. Geographical Data

---

**Acreeage of Property** Approximately 5 acres Fairmount, TN 105 NE

#### UTM References

(place additional UTM references on a continuation sheet.)

1 16 652800 3892220  
Zone Easting Northing  
2 \_\_\_\_\_

3 \_\_\_\_\_  
Zone Easting Northing

4 \_\_\_\_\_

See continuation sheet

#### Verbal Boundary Description

(Describe the boundaries of the property on a continuation sheet.)

#### Boundary Justification

(Explain why the boundaries were selected on a continuation sheet.)

---

### 11. Form Prepared By

---

name/title Karen L. Daniels/Historic Preservation Planner  
organization Southeast TN Development District date December 2000  
street & number P. O. Box 4757 telephone 423/266-5781  
city or town Chattanooga state TN zip code 37405-0757

---

#### Additional Documentation

---

submit the following items with the completed form:

#### Continuation Sheets

#### Maps

A **USGS map** (7.5 Or 15 minute series) indicating the property's location

A **Sketch map** for historic districts and properties having large acreage or numerous resources.

#### Photographs

Representative **black and white photographs** of the property.

#### Additional items

(Check with the SHPO) or FPO for any additional items

---

#### Property Owner

---

(Complete this item at the request of SHPO or FPO.)

name Dr. Jesse Register, Superintendent of Schools, Hamilton County Schools  
street & number 6703 Bonny Oaks Drive telephone 423/209-8400  
city or town Chattanooga state TN zip code 37421

---

**Paperwork Reduction Act Statement:** This information is being collected for applications to the National Register of Historic Places to nominate properties for listing or determine eligibility for listing, to list properties, and to amend existing listing. Response to this request is required to obtain a benefit in accordance with the National Historic Preservation Act, as amended (16 U.S.C. 470 *et seq.*)

**Estimated Burden Statement:** Public reporting burden for this form is estimated to average 18.1 hours per response including time for reviewing instructions, gathering and maintaining data, and completing and reviewing the form. Direct comments regarding this burden estimate or any aspect of this form to the Chief, Administrative Services Division, National Park Service, P. O. Box 37127, Washington, DC 20013-7127; and the Office of Management and Budget, Paperwork Reductions Projects (1024-0018), Washington, DC 20303.

United States Department of the Interior  
National Park Service

# National Register of Historic Places Continuation Sheet

Section number 7 Page 1

Bachman, Nathan L., School  
Hamilton County, Tennessee

---

## DESCRIPTION

Built in 1937, the Nathan L. Bachman School in Walden (pop. 1,523—1990 census), Hamilton County, Tennessee is a Colonial Revival school building designed by the architectural firm of R. H. Hunt and Company. The one-story, brick structure is capped with a side gable roof covered with asphalt shingles and rests on a brick foundation. In 1955, two brick one-story additions were added, which gave the building its irregular shape. A side gable-front-and-wing addition joins the east side of the original structure and contains two classrooms. The second addition is in the rear containing the cafeteria and kitchen. All the window openings are highlighted with stone sills, except for the openings on the 1955 additions, which have brick sills. Accompanying the property on the five-acre lot are a school playground and ball field. The building was constructed in a rural area, however, residential development in recent years has occurred around the site.

Facing north on Anderson Pike, the façade displays eight bays. Marking the main entrance is a centrally located pedimented portico highlighted with brick pilasters, cornice returns and an arched opening that leads into a recessed vestibule. The vestibule contains a pair of wood panel doors with nine-lights that are capped with a six-pane horizontal transom. The entrance is flanked by six sets of window openings, three to each side, that adorn the façade. All the window openings, except those associated with the 1955 addition contain twelve-over-twelve, double-hung, wood sashes. Additionally, two window openings with six-over-six, double-hung, wood sashes are located just to the west and east of the first two sets of windows that flank the portico. Located between the second and third set of windows to the west of the main entrance is a circa 1955 metal emergency exit door. A set of seven metal awning windows comprises the fenestration of the 1955 classroom addition. Projecting slightly at the west end of the façade is the auditorium. The entrance to the auditorium reveals brick pilasters that support a triangular pediment with cornice returns. Above the door surround is a round wood louvered vent. Concrete steps with stone capped brick cheek walls lead to a pair of wood panel doors with nine lights that are capped with a multi-pane half round fanlight. Two arched window openings are set back from, and flank, the projecting entrance. These window openings contain ten-over-fifteen, double-hung, wood sashes and are capped with multi-light transoms.

The west elevation of the building reveals the side of the auditorium. This elevation includes five arched window openings with ten-over-fifteen, double-hung, wood sashes that are capped with multi-pane fanlights. South of these window openings, concrete steps, accompanied by brick cheek walls capped with stone slabs, lead up to a panel wood door with nine-lights. South of the door are two window openings with six-over-six, double-hung, wood sashes.

The rear (south) elevation of the main building displays an assortment of window arrangements. Beginning with the rear of the auditorium, a centrally located exterior brick chimney is flanked by

United States Department of the Interior  
National Park Service

# National Register of Historic Places Continuation Sheet

Section number 7 Page 2

Bachman, Nathan L., School  
Hamilton County, Tennessee

two quarter round wood louvered vents in the gable. Moving east along the main block of the school, the following fenestration is exhibited: a pair of window openings with six-over-six, double-hung, wood sashes, followed by a single window opening with six-over-six, double-hung, wood sashes, a band of four window openings with twelve-over-twelve, double-hung, wood sashes, a single window opening with six-over-six, double-hung, wood sashes, a band of four window openings with twelve-over-twelve, double-hung, wood sashes and finally a pair of window openings with twelve-over-twelve, double-hung, wood sashes. A rear entranceway with a 1955 connector hallway that links the cafeteria with the main block interrupts the fenestration pattern of the south elevation. Although the hallway encloses the original entranceway, the exterior elements of the entrance surround are visible, which includes a projecting pediment and cornice returns. The cafeteria is described separately below. East of the cafeteria connector the fenestration of the main block continues with a pair of twelve-over-twelve, double-hung, wood sash windows, one six-over-six, double-hung, wood sash window, followed by two bands of four window openings with twelve-over-twelve, double-hung, wood sashes, which are separated by a six-over-six, double-hung, wood sash window. A pair of metal doors with single lights marks the entrance into the 1955 addition. The 1955 addition reveals a gable roof embellished with cornice returns and a wood louvered vent in the gable. This completes the ornamentation of the south elevation.

The cafeteria addition is a simple one-story square brick structure with a flat roof. The west side of the addition displays an uninterrupted brick wall. The fenestration of the rear (south) elevation of the addition reveals twelve, five light metal awning windows. The east elevation presents six light and twelve light stationary windows. The hallway that links the cafeteria to the school dominates the north elevation of the 1955 addition. The fenestration of the cafeteria connector displays paired four light awning windows that flank a pair of metal doors on either side of the hallway.

As a result of the 1955 classroom addition, the east elevation consists of a series of walls that are affiliated with different sections of the school. The east elevation of the auditorium exhibits a metal cover to a coal chute at the ground level; two window openings with six-over-six, double-hung, wood sashes, and a nine-light single panel door accessible by concrete steps that are embellished with brick cheek walls capped with stone slabs. Despite the 1955 classroom addition to the original structure, elements of the original east elevation are still visible. These include the gable end of the original main block, complete with cornice returns, a circular wood louvered vent and a projecting pedimented entrance opening that is joined to the 1955 addition. Moreover, a pair of six-over-six, double-hung, wood sashes is displayed. Finally, the east elevation of the 1955 classroom addition exhibits a gable end containing a wood louvered vent that is nestled between cornice returns. Additionally, a set of seven metal awning windows adorns the wing portion of the side gable-front-wing addition.

United States Department of the Interior  
National Park Service

# National Register of Historic Places Continuation Sheet

Section number 7 Page 3

Bachman, Nathan L., School  
Hamilton County, Tennessee

The interior of the building has classrooms on each side of a central hall that runs east-west with the auditorium at the west end. A north-south hall connects the main entrance with a historic entrance on the south wall that runs into the 1955 cafeteria addition. Both hallways are lined with a stretcher bond brick veneer that extends approximately five feet from the floor. The remaining portion of the walls are covered with plaster.

The building originally contained eight classrooms, each with a cloakroom. Growth in student population forced two of the cloakrooms to be combined into a classroom in the early 1970s. The addition of indoor plumbing required the conversion of one classroom into restrooms in 1952. With the circa 1955 additions the school consisted of ten classrooms, a teachers lounge, office, workroom, and restrooms in the building, plus the cafeteria and kitchen.

The floors in the building were originally wood throughout. The wood floor remains in the auditorium, but in the halls the wood has been covered with vinyl tiles, and in the classrooms the floors are covered with a circa 1985 carpet. The classroom walls are plaster throughout. The ceilings are plaster, but suspended ceilings have been installed circa 1985 due to roof leaks and concerns related to asbestos. Fluorescent fixtures have replaced all the original light fixtures.

Providing access to the classrooms are wood panel doors with six lights, complete with operable six light transoms. In addition to the transoms over the doors, there are transoms in the hallway that open into each classroom. The classrooms retain wood framed chalkboards on two walls. The windows are embellished with wood surrounds and sills; with the doors retaining their original wood trim.

The classrooms in the circa 1955 addition contain walls of concrete block, vinyl tile floors, and metal awning windows with concrete block sills.

The auditorium has a stage and wood seats. Two partitioned classrooms were created in the auditorium circa 1980, which necessitated the removal of some of the seats, which were then stored on site. Rehabilitation plans call for removing the partitions and reinstalling the seats.

Also on the lot is a circa 1940 ball field with a chain link backstop. This field contributes to the historical setting of the school and is a contributing part of this nomination. There is also a playground on the site that contains playground equipment from the 1980s, which are non-contributing due to their age.

United States Department of the Interior  
National Park Service

# National Register of Historic Places Continuation Sheet

Section number 8 Page 4

Bachman, Nathan L., School  
Hamilton County, Tennessee

## SIGNIFICANCE

The Nathan L. Bachman School in Walden, Hamilton County, Tennessee is eligible for listing in the National Register of Historic Places under criteria A and C. Under criterion A, the school is locally significant in the area of social history as a Public Works Administration (PWA) project in an unincorporated community of Hamilton County. Under criterion C, the school is an excellent example of Colonial Revival architecture, which retains a high degree of architectural integrity despite additions to the building in 1955.

The building represents the modernization of school buildings under the Public Works Administration (PWA) projects, which replaced older obsolete schools with new ones. Constructed in 1936-37, the building replaced the Fairmount School (non-extant). The county received funding for the project from the Federal Emergency Administration of Public Works (project number Tenn-1008-R). The school building represents the importance that the people of the region placed in education in order to improve the welfare of their community. In 1858, the first school in the area had been established, and when programs were available to replace obsolete schools in 1911 and during the Depression, the community took advantage of them.

This part of Walden's Ridge was settled beginning in the 1830s and was known as Fairmount. It is the oldest community on Walden's Ridge in Hamilton County. Local residents put up a subscription school in 1858 called the Fairmount Academy for the education of boys and girls. The building was a one story, frame building with a gable roof capped with a cupola with bell (non-extant).

A summer community called Summertown developed nearby, in what is now Walden, starting in the 1870s for people who wanted to escape the heat and disease in Chattanooga. By 1874 there was a year round community in Summertown, which led to the construction of the Oakwood School (non-extant).

In 1911, in an effort to modernize schools from frame and log construction to brick buildings, the Fairmount Academy and the Oakwood School merged to form the Fairmount Elementary School on Fairmount Road. The school building is not extant, but an auditorium built for it still stands and is used as a performance space for the Mountain Opry. The auditorium was considered an important feature in schools at that time, since the community could use it for assemblies, gatherings, and community meetings. The school served as the center of community life, in addition to being an educational facility.

As with other small schools in the region, the Fairmount Elementary School became overcrowded



United States Department of the Interior  
National Park Service

# National Register of Historic Places Continuation Sheet

Section number 8 Page 5

Bachman, Nathan L., School  
Hamilton County, Tennessee

when the population grew. In 1934, the Hamilton County Board of Education approved an application from the Fairmount community to replace four schools in the area, including the Fairmount School, because of overcrowding and a sub-standard school building. The county purchased 5 acres of land on Anderson Pike, and the land was acquired for \$1,875. The school was designed to hold 175 students.

The new school consisted of eight classrooms and an auditorium, which was recognized as essential to new schools. The total cost for the school was \$56,806.13. Although the building had most of the things considered necessary for a modern school in the 1930s one thing it lacked was indoor plumbing, which was not added until 1952. There were two outhouses (non-extant) on the property. The R. H. Hunt and Company architectural firm designed the building. Three schools in Hamilton County, the Bachman School, the Bess T. Shepherd School and the Ganns-Middle Valley School utilized the same plan. Shepherd and Ganns-Middle Valley had indoor plumbing (neither is extant).

One of the purposes of PWA school construction was to replace obsolete and unsafe buildings with modern and consolidated schools, and to provide modern equipment. Kenneth Markwell, head of the PWA in Tennessee stated, "we are glad that school building applications continue to come in, as we believe schools to be among the most worthwhile projects in which any community can invest" (Wild, p8).

Other school buildings approved as part of the PWA docket 1008-R were the Bess T. Shepherd School (destroyed by fire in 1989), Ganns-Middle Valley School (non-extant), Hixson High (non-extant), Soddy-Daisy High (non-extant), Red Bank Junior-Senior High (extant, but slated for replacement and demolition), and Pineville School (non-extant). In total, PWA funds paid for 13 new Hamilton County Schools costing \$1,272,727. There were 13 elementary schools in the county system in the 1930s spread throughout the county; two were located on Walden's Ridge, the Signal Mountain Elementary School and the Bachman School.

The Bachman School was named after Nathan L. Bachman who had served as an Associate Justice of the Supreme Court of Tennessee from 1918 to 1924 and as U. S. Senator from Tennessee from 1933 to 1937. Bachman died on April 23, 1937, having been a life-long resident of the area.

The Bachman School population had grown by 1954 and an addition was constructed to the east side of the building to hold two additional classrooms. A kitchen and cafeteria were also added to the south of the building in the same year.

United States Department of the Interior  
National Park Service

# National Register of Historic Places Continuation Sheet

Section number 8 Page 6

Bachman, Nathan L., School  
Hamilton County, Tennessee

The school educated children in grades K-6 until 1975 when three elementary schools on Walden's Ridge were reorganized. Signal Mountain Elementary and Bachman School educated children from grades K-3, and the Thrasher Elementary School (circa 1957) educated children in grades 4-6. In 1977, the Sawyer School, located farther north on Walden's Ridge, closed and the pupils were sent to Bachman.

The building illustrates the effects of the PWA on school building in Hamilton County and the importance the community placed on education through supplying modern schools for the children in the area.

The Public Works Administration was established by Congress as the Federal Emergency Relief Administration under the National Industrial Recovery Act of 1933. Between 1933 and 1943, the PWA was responsible for the construction of roads, buildings, dams and other projects that exceeded \$4 billion. In 1943, the agency's functions were transferred to the Federal Works Agency.

Hamilton County took advantage of the program and built 13 new county schools (the city of Chattanooga built an additional 13 schools), The biggest federal aid project in the county though was not a PWA project; it was the construction of the Chickamauga Dam in the late 1930s by the Tennessee Valley Authority. The only PWA project in the county to be constructed on Walden's Ridge in the western part of the county was the Bachman School.

The building functioned as a school until the 1999-2000 school year when the last students at the school moved to the newly constructed Nolan Elementary School. The Town of Walden has leased the building to a non-profit organization, the Bachman Community Center Council. They will be operating senior services and other community services from the building. To allow large groups to utilize the auditorium, the Council plans to do some renovations with the help of a historic preservation planner. The Council has voted not to make changes without the planner's approval so that the historic character of the building can be retained.

Architecturally, the Nathan L. Bachman School is an excellent example of the Colonial Revival style that was common in the United States from about 1880 to 1955. Elements of the Georgian and Adam styles, which served as prototypes for the movement, are readily apparent along the façade of the Bachman School. Highlighting the character defining features of the style is the symmetrical presentation of the façade, one of the main principles of colonial architecture. The façade reveals a central entrance that is flanked by equally spaced window bands with four openings each. Continuing the colonial impression are the projecting pedimented porticos that highlight the entrances to the front of the building and the auditorium. Fanlights, typical of the Adams style, adorn the main entrance and the windows of the auditorium, which presents an

**United States Department of the Interior**  
**National Park Service**

# **National Register of Historic Places**

## **Continuation Sheet**

Section number 8 Page 7

Bachman, Nathan L., School  
Hamilton County, Tennessee

---

elegant feature to the Bachman School. Lastly, the white multi-light window sash and panel doors, combined with the red brick of the building, continue the colonial appearance.

Although the Bachman School received additions to the main block in 1955, the architectural integrity of the building was not compromised. The additions harmonize with the original structure in massing and style, and were added to the main block without the removal of original exterior elements. The use of brick and gable roofs in the east addition conforms to the main block, while the use of a hallway connector for the brick cafeteria diminishes little from the Colonial Revival style of the building.

United States Department of the Interior  
National Park Service

# National Register of Historic Places Continuation Sheet

Section number 9 Page 8

Bachman, Nathan L., School  
Hamilton County, Tennessee

---

## MAJOR BIBLIOGRAPHICAL REFERENCES

Carver, Martha. *Buildings in Hamilton County Designed by R. H. Hunt (Thematic Group)*.  
Nomination to the National Register of Historic Places, 1979.

Douthat, James L. *Along the Pike: The Story of Walden's Ridge along Anderson Pike*. Signal  
Mountain, TN: Mountain Press, 1996.

Douthat, James L. *Mountain Images*. Signal Mountain, TN: Mountain Press, 1998.

*News Free Press*. 4 September 1975.

Patten, Carter. *Signal Mountain and Walden's Ridge*. Signal Mountain, TN: Walden's Ridge  
Historical Association, 1976 (second edition).

Patten, Elizabeth B. "A History of Summertown Walden's Ridge." Unpublished manuscript, 1959.

*Signal Mountain Observer*. April 1976.

Wild, Amanda. "Nathan Bachman Elementary School." Unpublished manuscript, term paper for  
Dr. Carroll Van West, Middle Tennessee State University, 15 January 2000.

**United States Department of the Interior**  
National Park Service

# National Register of Historic Places Continuation Sheet

Section number 10 Page 9

Bachman, Nathan L., School  
Hamilton County, Tennessee

---

## GEOGRAPHICAL INFORMATION

### Verbal Boundary Description:

The property included in this nomination is located on Anderson Pike, and is bounded on two sides by Anderson Pike and the Walden Corporate Limits. The property is identified on accompanying Hamilton County, Tennessee tax map (scale 1" = 400') number 89 as lot 16.

### Boundary Justification:

The property included in this nomination is the 5 acres purchased by the Hamilton County Board of Education in 1936 for the construction the Nathan L. Bachman School. Bachman, Nathan L. School

**United States Department of the Interior**  
National Park Service

# National Register of Historic Places Continuation Sheet

Section number PHOTOS Page 10

Bachman, Nathan L., School  
Hamilton County, Tennessee

---

Hamilton County, Tennessee

Photography by: Karen Daniels

Date: September 6, 2000

Location of Negatives: Tennessee Historical Commission, Nashville, Tennessee

#1 of 31

Entrance, north façade

#2 of 31

North façade

#3 of 31

North façade and 1955-classroom addition

#4 of 31

North façade toward auditorium

#5 of 31

North façade, auditorium entrance

#6 of 31

West elevation, side of auditorium

#7 of 31

South elevation, auditorium

#8 of 31

Cafeteria addition

#9 of 31

South elevation

#10 of 31

South elevation

#11 of 31

Cafeteria addition, west elevation

United States Department of the Interior  
National Park Service

# National Register of Historic Places Continuation Sheet

Section number PHOTOS Page 11

Bachman, Nathan L., School  
Hamilton County, Tennessee

---

#12 of 31

Cafeteria addition, east elevation

#13 of 31

South elevation

#14 of 31

South elevation, 1955 classroom addition

#15 of 31

Interior, main entrance

#16 of 31

Interior, north-south hallway toward cafeteria

#17 of 31

Interior, east-west hallway toward 1955 classroom addition

#18 of 31

Interior, auditorium

#19 of 31

Interior, auditorium

#20 of 31

Interior, classroom

#21 of 31

Interior, classroom

#22 of 31

Interior, classroom

#23 of 31

Interior, classroom

#24 of 31

Interior, classroom

**United States Department of the Interior**  
National Park Service

# National Register of Historic Places

## Continuation Sheet

Section number PHOTOS Page 12

Bachman, Nathan L., School  
Hamilton County, Tennessee

---

#25 of 31

Interior, classroom

#26 of 31

Interior, classroom addition

#27 of 31

Interior, classroom addition

#28 of 31

Interior, kitchen

#29 of 31

Interior, cafeteria

#30 of 31

Plaque

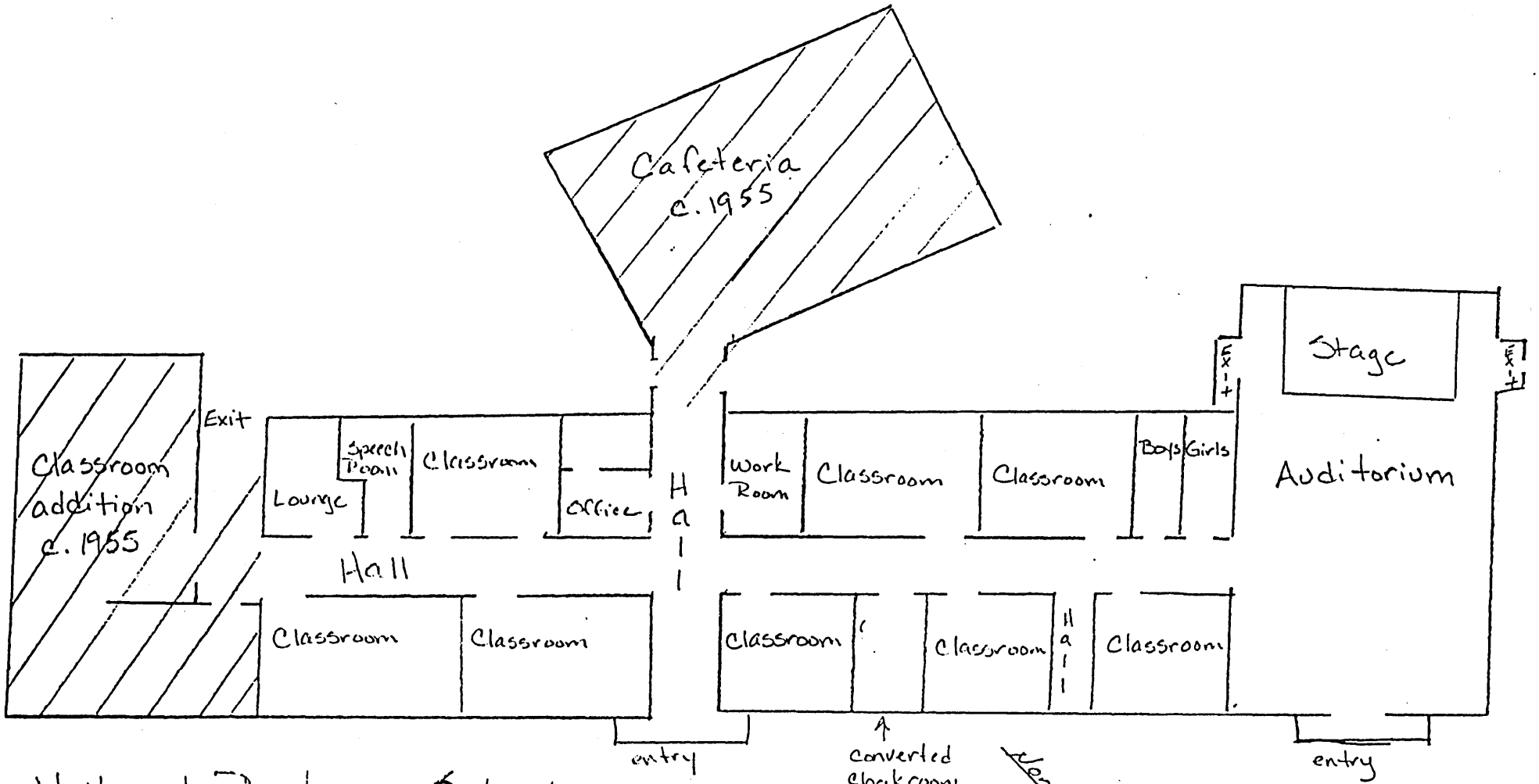
#31 of 31

Playground and ball field



Ball field

Playground

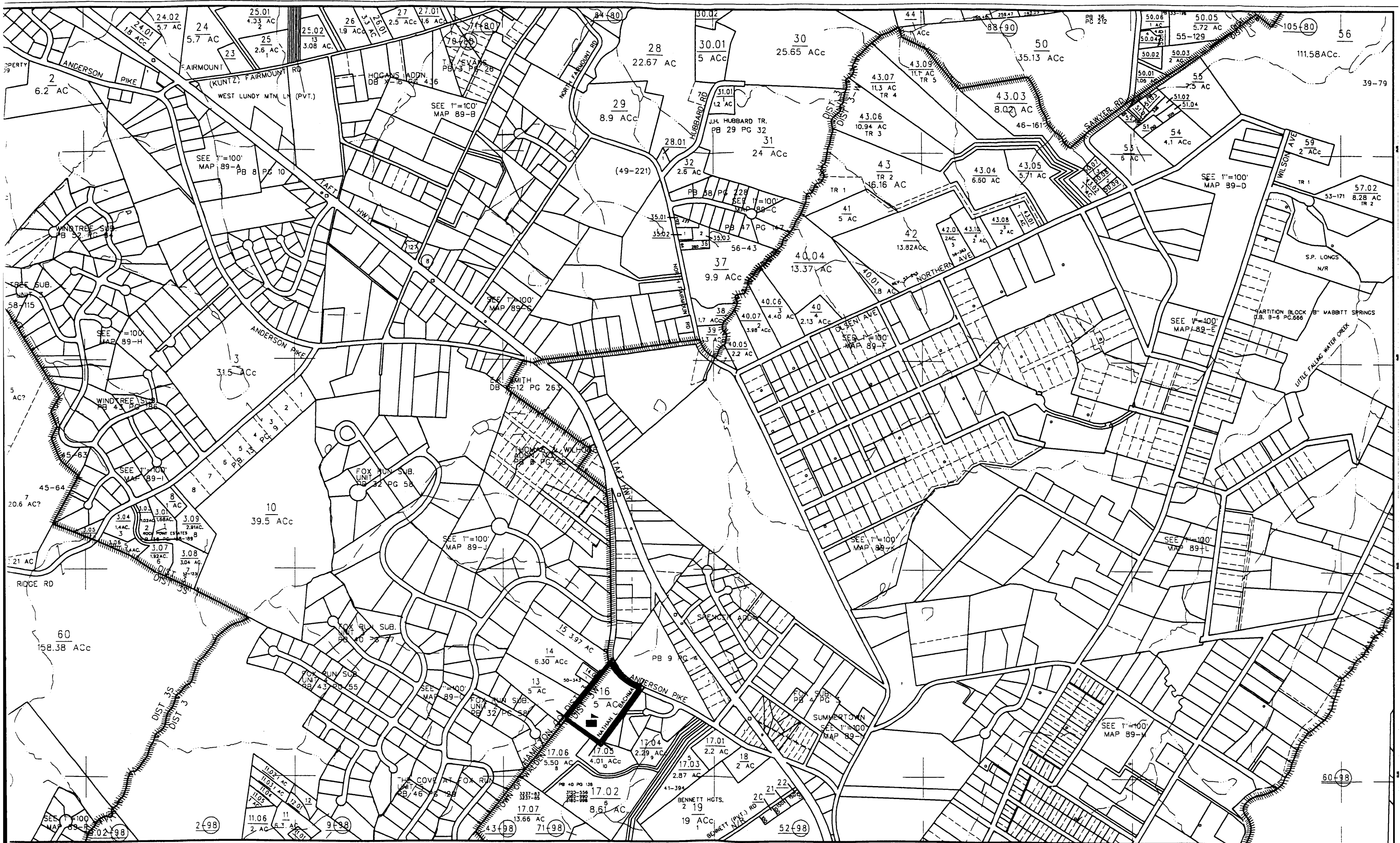


Nathan L. Bachman School  
Hamilton Co., Tenn.  
NOT TO SCALE

AS OF 1999-2000 SCHOOL YEAR



*Facade of the Bachman School  
(pieced together from photos)*



Bachman, Nathan L School  
Hamilton Co. Tenn

Scale 1"=400'  
PARCEL BOUNDARY

NORTH

PLANIMETRIC MAP

78	80	81
----	----	----

HAMILTON COUNTY, TENNESSEE  
Copyright 1988 Hamilton County, Tennessee  
MAP NO. 89

1 PARCEL NUMBER    4 PARCEL HOOK    22-20 PARCEL & CONTROLLING MAP NO.