



Albany airport
Albany, Linn County, Oregon
Photo by E. U. Hemminger, June, 1997
Aerial view, looking west
#1 of 24

Note: Portion of original diagonal
runway still visible



Albany Airport
Albany, Linn County, Oregon
By E. V. Hemminger, June, 1997
Aerial View, historic hangar, bldg 1
Looking northwest
#2 of 24



Albany Airport,
Linn County, Oregon,

3 of 24



ALBANY
MUNICIPAL AIRPORT



Albany Airport

Linn County, Oregon

#4 of 24



ALBANY

Albany airport
Linn County, Oregon
5 of 24

ALBANY



Albany Airport
Linn County, Oregon
#6 of 24



ALBANY
LOCAL 1027

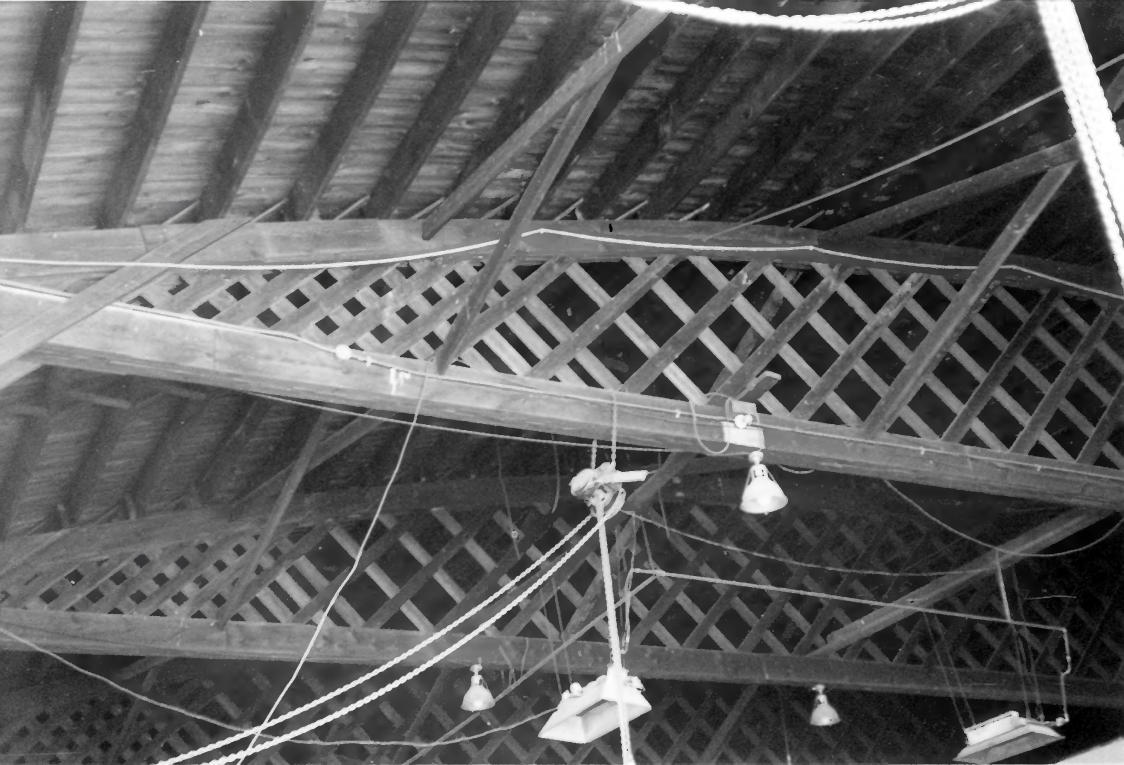
Albany Airport
Lincoln County, Oregon
#17 of 24



Albany Airport

Linn County, Oregon

8 of 24



Albany Airport
Linn County, Oregon
#9 of 24



albany airport
Linn County, Oregon

#10 of 24



Albany Airport
Linn County, Oregon
11 of 24



Albany Airport
Linn County, Oregon

12 of 24



Albany Airport
Lincoln County, Oregon
#13 of 24



Albany Airport
Linn County, Oregon
14 of 24



Albany Airport

Linn County, Oregon

#15 of 24



Albany Airport
Linn County, Oregon
16 of 24

THIS PAPER
MANUFACTURED
BY KODAK

THIS PAPER
MANUFACTURED
BY KODAK

THIS PAPER
MANUFACTURED
BY KODAK

THIS PAPER
MANUFACTURED
BY KODAK

THIS PAPER
MANUFACTURED
BY KODAK

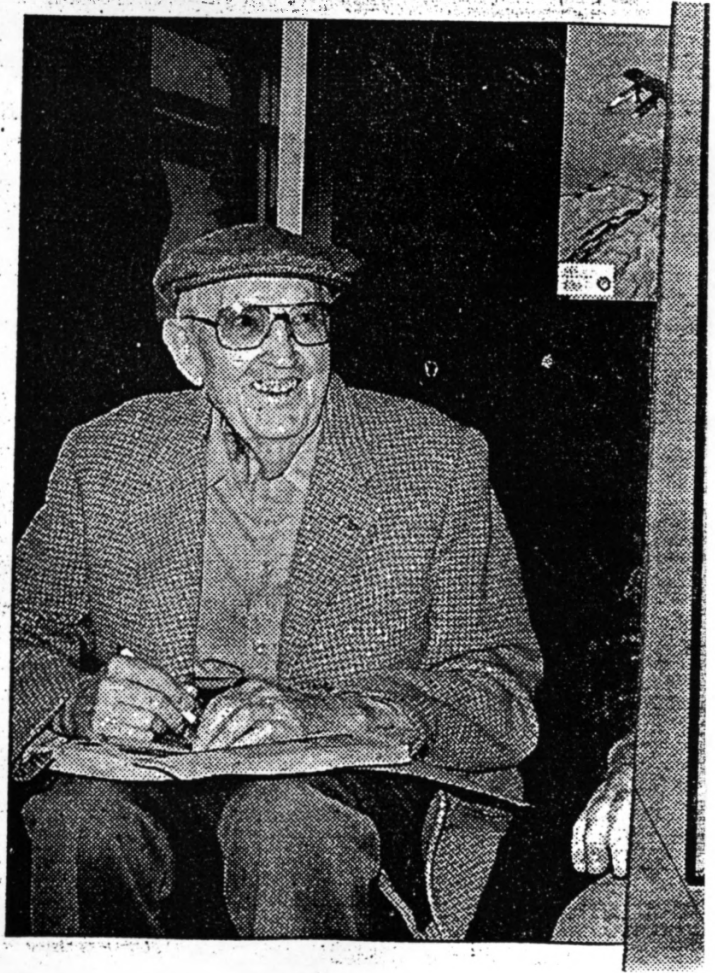
THIS PAPER
MANUFACTURED
BY KODAK

THIS PAPER
MANUFACTURED
BY KODAK

THIS PAPER
MANUFACTURED
BY KODAK

Albany Airport
Lincoln County, Oregon
March 30, 1997
CJ Langmack

Photo from Democrat
Herald, Albany
17 of 24



18 of 24

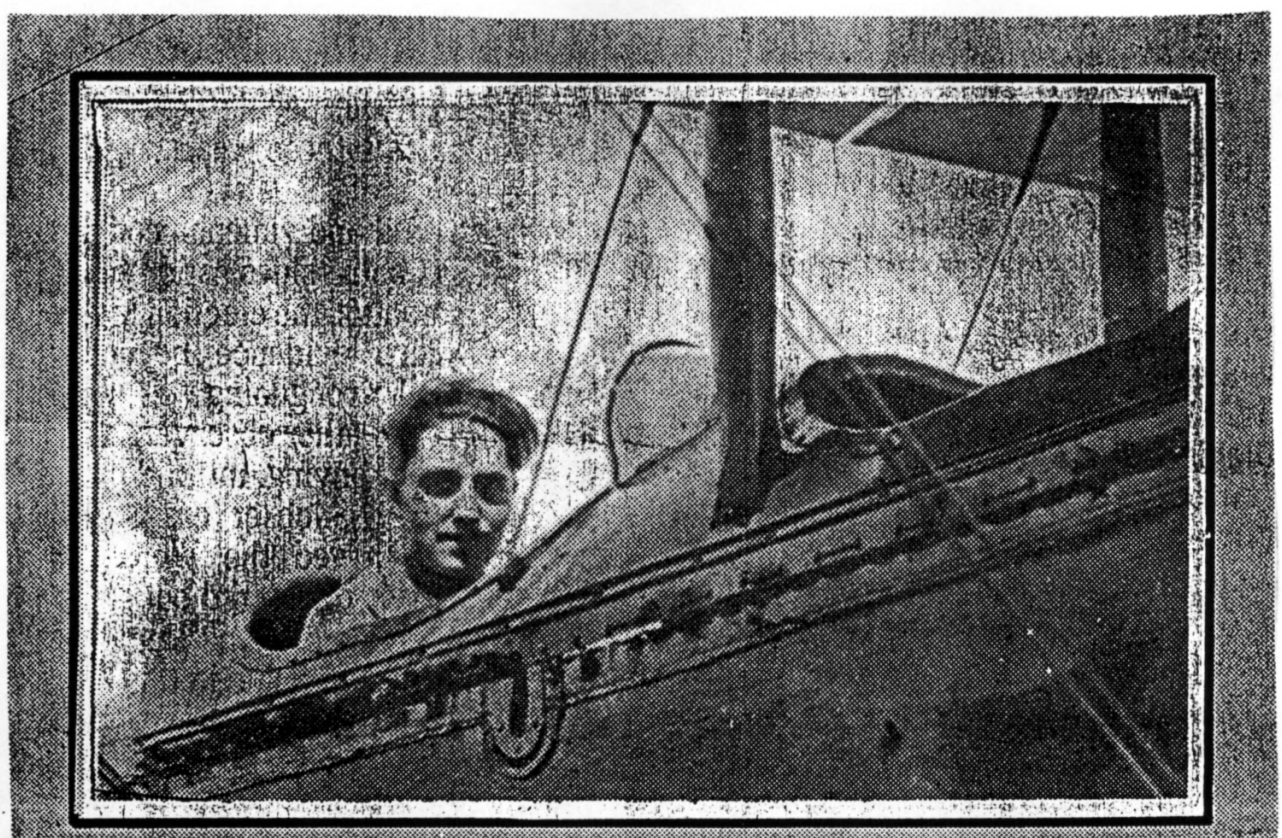


Photo courtesy of Charlie Langmack

Langmack started flying in 1920 when he was 12.

FEDERATION AERONAUTIQUE
INTERNATIONALE

NATIONAL AERONAUTIC
ASSOCIATION OF U. S. A.
INC.

Certificate No. 7158

The above named Association, recognized by the Fédération Aéronautique Internationale, as the governing authority for the United States of America, certifies that

CHARLES J. LANGMACH

born 22nd day of SEPT. 1907
having fulfilled all the conditions required by the Fédération Aéronautique Internationale, for an Aviator Pilot is hereby brevetted as such.

Dated July 20 1929
CONTEST COMMITTEE

Orville Wright
Chairman

W. J. ...
Executive Vice-Chairman



[SEAL]

Signature of pilot:

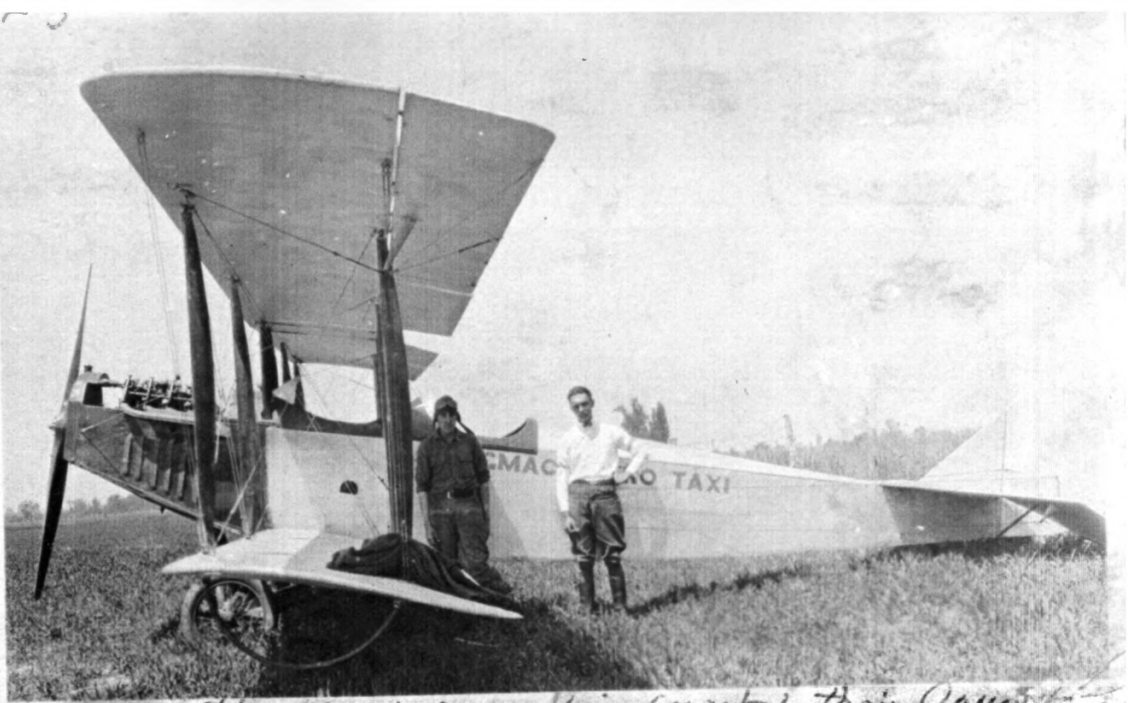
Charles J. Langmach

Albany Airport, Linn County, Oregon
Photo copy, Langmach license, signed
by Orville Wright.

Langmach Photo Collection

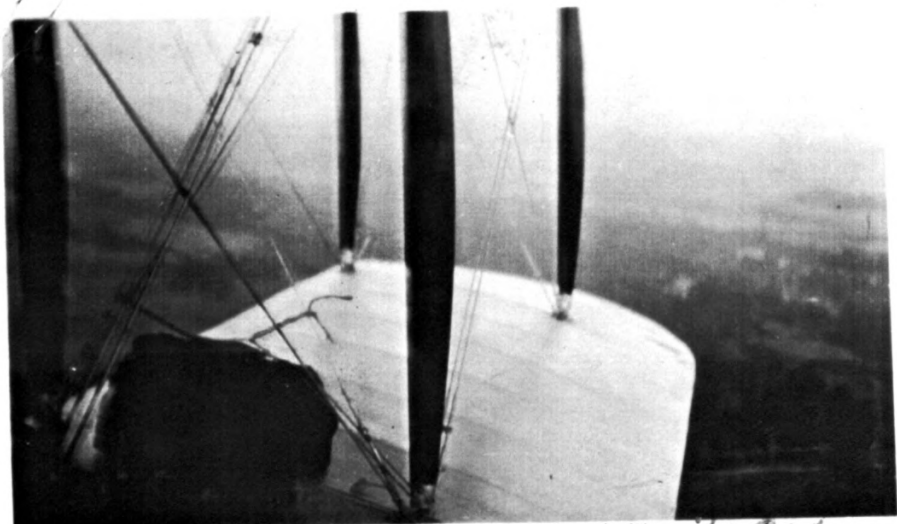
#19 of 24

#20 of 24



CHARLIE + DAVE LINDMACK + THEIR CANTON

CHAS + DAVE



ONLY PLACE TO CARRY OUR OVERNITE BAG

Albany Airport Linn County, Oregon
Langmack Aviation, March 1990s, Langmack Collection

Albany Airport, Linn County, Oregon, Langmack Historic Photo Collection



Col. Charles J. Langmack, circa WWII #91 of 24

PHOTO
BY BOB Potts
1941

Albany Airport
Linn County
Oregon
Aerial View
(Historic Photo)
From NE corner,
looking West +
South

22 of 24



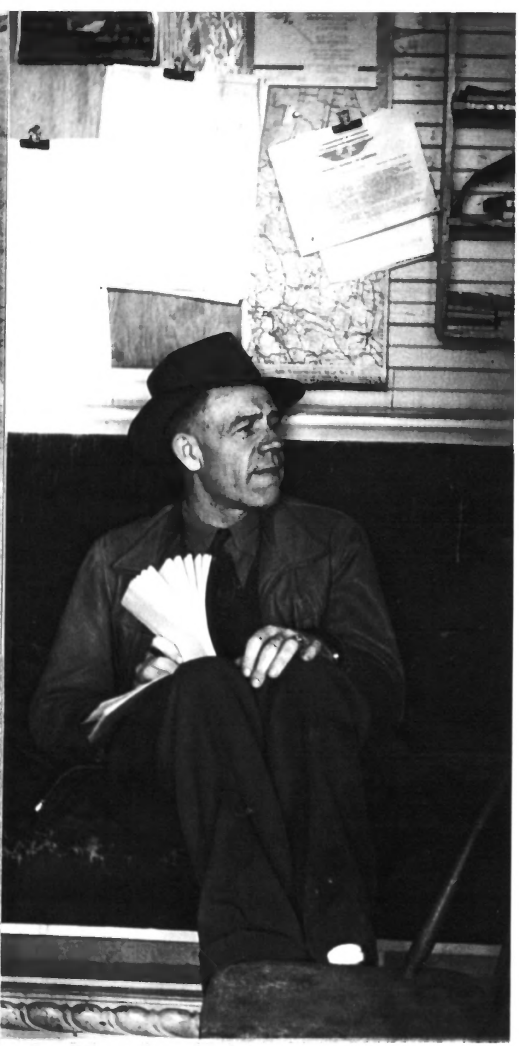


Albany Airport, Linn County, Oregon
Historic Photo, 1947, Bob Patte collection
Parking apron, historic hangar,
looking N.W.

93 of 24

Albany Airport
Linn County, Oregon
Historic Photos

1945 Looking northwest
↓



Howard Burleson



To you
from
Evelyn
Burleson

Evelyn Burleson, with 2 students
24 of 24