



Salisbury Town Hall

Salisbury, Addison County, Vermont

Lauren Stahl

March 1991

Negative filed at Vermont division of Historic Preservation

Looking west towards the  
South and East facades

photo 1

91-17-2A





Salisbury Town Hall

Salisbury, Addison County, Vermont

Lauren Stahl

March 1991

Negative filed at Vermont Division for Historic Preservation

Looking East towards the  
North and West facades

91-17-3A

photo 2

91-17-3A





Salisbury Town Hall  
Salisbury, Addison County, Vermont

Lauren Stahl

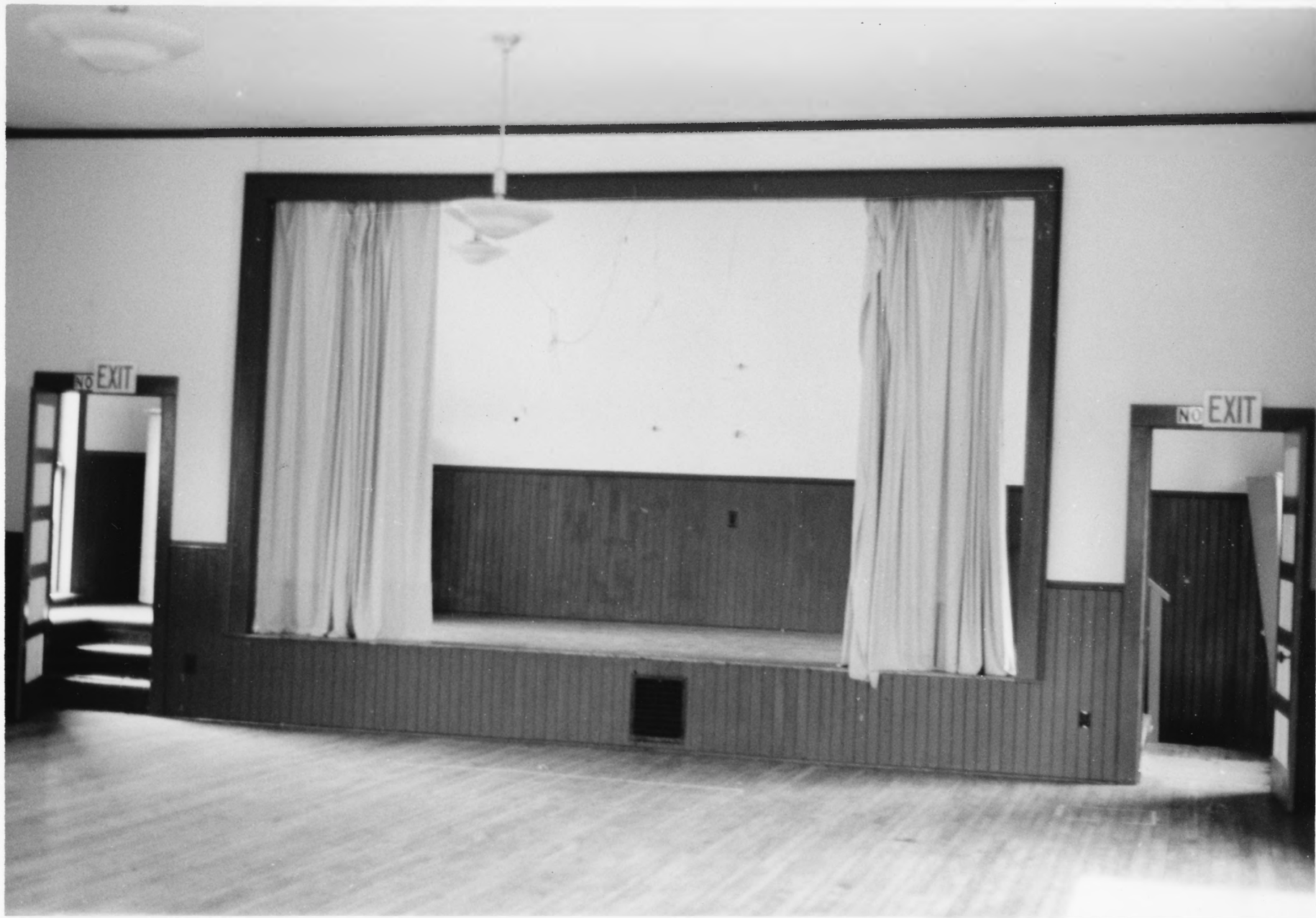
March 1991

Negative filed at Vermont division for Historic Preservation

Looking West at the south eave section  
of the East facade.

91-17-9A

photo 3



Salisbury Town Hall

Salisbury, Addison County, Vermont

Lauren Stahl

March 1991

Negative filed at Vermont Division for Historic Preservation

Looking west towards  
the second floor stage

Photo 4

91-12-17A