

HABS/HAER INVENTORY

See "HABS/HAER Inventory Guidelines" before filling out this card.

1. NAME(S) OF STRUCTURE Hereford Bridge (San Pedro River Bridge)	3. DATE(S) OF CONSTRUCTION 1912-13; 1915; 1927
2. LOCATION Hereford Road over the San Pedro River Hereford; SE1/4 S9 T23S R22E Cochise County, Arizona	4. USE (ORIGINAL/CURRENT) roadway bridge / roadway bridge 5. RATING NRHP eligible: local significance

6. CONDITION
 good; sufficiency rating: 46.1 owner: Cochise County

7. DESCRIPTION

span number : 3	superstructure: riveted steel, 10-panel Warren pony truss w/verticals at alt. panel points
span length : 102.0'	substructure : concrete abutments and wingwalls w/concrete-filled steel cylinder piers
total length: 267.0'	floor/decking : concrete deck over steel stringers
roadway wdt.: 15.7'	other features: upper chord: 2 channels w/cover plate and webbing; lower chord; 4 angles w/ batten plates; vertical: 2 angles w/ batten plates; diagonal: 2/4 angles w/ batten plates; floor beam: I beam; steel angle outriders

8. HISTORICAL DATA

The Hereford Bridge is actually an agglomeration of spans, built in three successive stages. In September 1912, the Cochise County Board of Supervisors advertised for a 2-span truss, supported by steel cylinder piers, to span the San Pedro River near the town of Hereford. After rejecting the first letting the next month, the county contracted with the Midland Bridge Company of Kansas City for a single 80' truss for \$3112. Midland completed the structure in March 1913. Although the evidence is contradictory, it appears that in March 1915 the county contracted with Bane and Tarrant to move the original span about 200' upriver and erect a second span. Using a superstructure fabricated by the Penn Bridge Company of Beaver Falls PA, the local firm completed this second phase later that year. Finally, in March 1927, the county contracted with the Ware Company of El Paso TX to erect a third pony truss span and move one of the earlier spans. Ware purchased a 100' truss from the Virginia Bridge and Iron Company of Roanoke and completed the bridge in December. The Hereford Bridge has since carried traffic on a county road with only minor changes made in 1978.

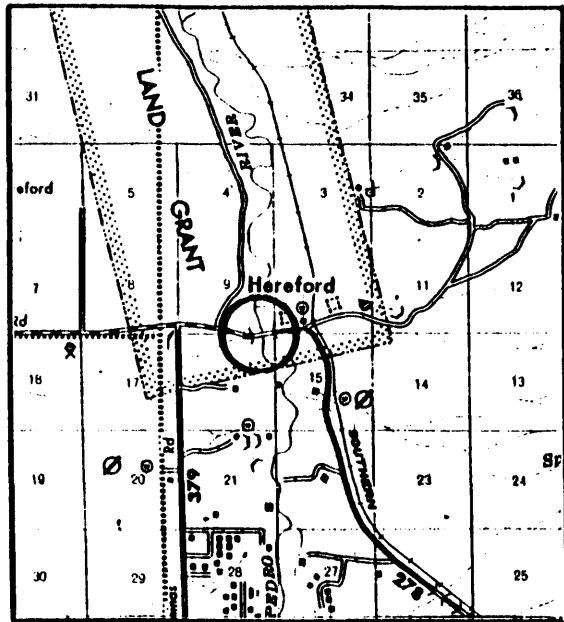
9. SIGNIFICANCE

The Hereford Bridge is a typical example of a county-built bridge, comprised of standard-design trusses erected from prefabricated components by three regional bridge companies. Its staged construction is unusual, however, and the 1912 span is one of the two earliest vehicular trusses still in use in the state (the other: Chevelon Creek Bridge). Begun soon after Arizona achieved statehood, the Hereford Bridge is an important representative of early Arizona truss construction.

10. NAME(S) OF STRUCTURE

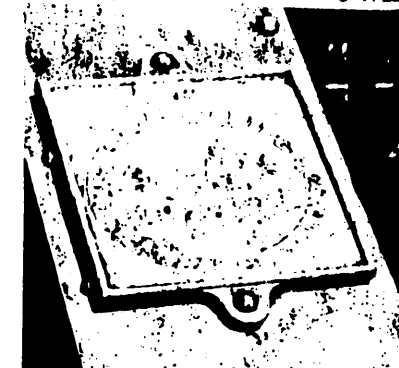
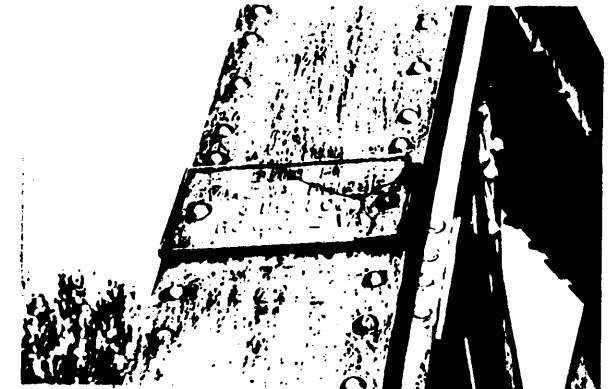
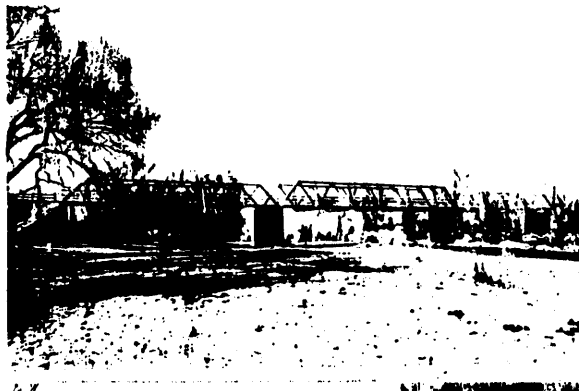
Hereford Bridge

11. PHOTOS (W/ FILM ROLL & FRAME NO.) AND SKETCH MAP OF LOCATION



LOCATION MAP

TAKEN FROM DEPARTMENT OF TRANSPORTATION
GENERAL HIGHWAY MAP



Bridge Record, Arizona City Streets and County Roads: 9124; Structures Section, Arizona Department of Transportation, Phoenix AZ.

Proceedings of the Cochise County Board of Supervisors: 16 September 1912 (Book 9 page 258); 7 October 1912 (Book 9, page 273); October 1912 (Book 9, page 283); 3 February 1913 (Book 10, page 26); 3 March 1913 (Book 10, page 58); 5 January 1915 (Book 10, page 366); 25 January 1915 (Book 10, page 368,371); 1 February 1915 (Book 10, page 373); 1 March 1915 (Book 10, page 381); 7 March 1927 (Book 14, page 350,355); 1 July 1927 (Book 14, page 445); 3 October 1927 (Book 14, page 455); 3 November 1927 (Book 14, page 465); 5 December 1927 (Book 14, page 473); 3 January 1928 (Book 14, page 486).

Field inspection by Clayton Fraser, 24 February 1987.

13. INVENTORIED BY:

Clayton B. Fraser

AFFILIATION

Fraserdesign Loveland Colorado

DATE

1 April 1987

12. SOURCES