

HENRY WHITFIELD HOUSE

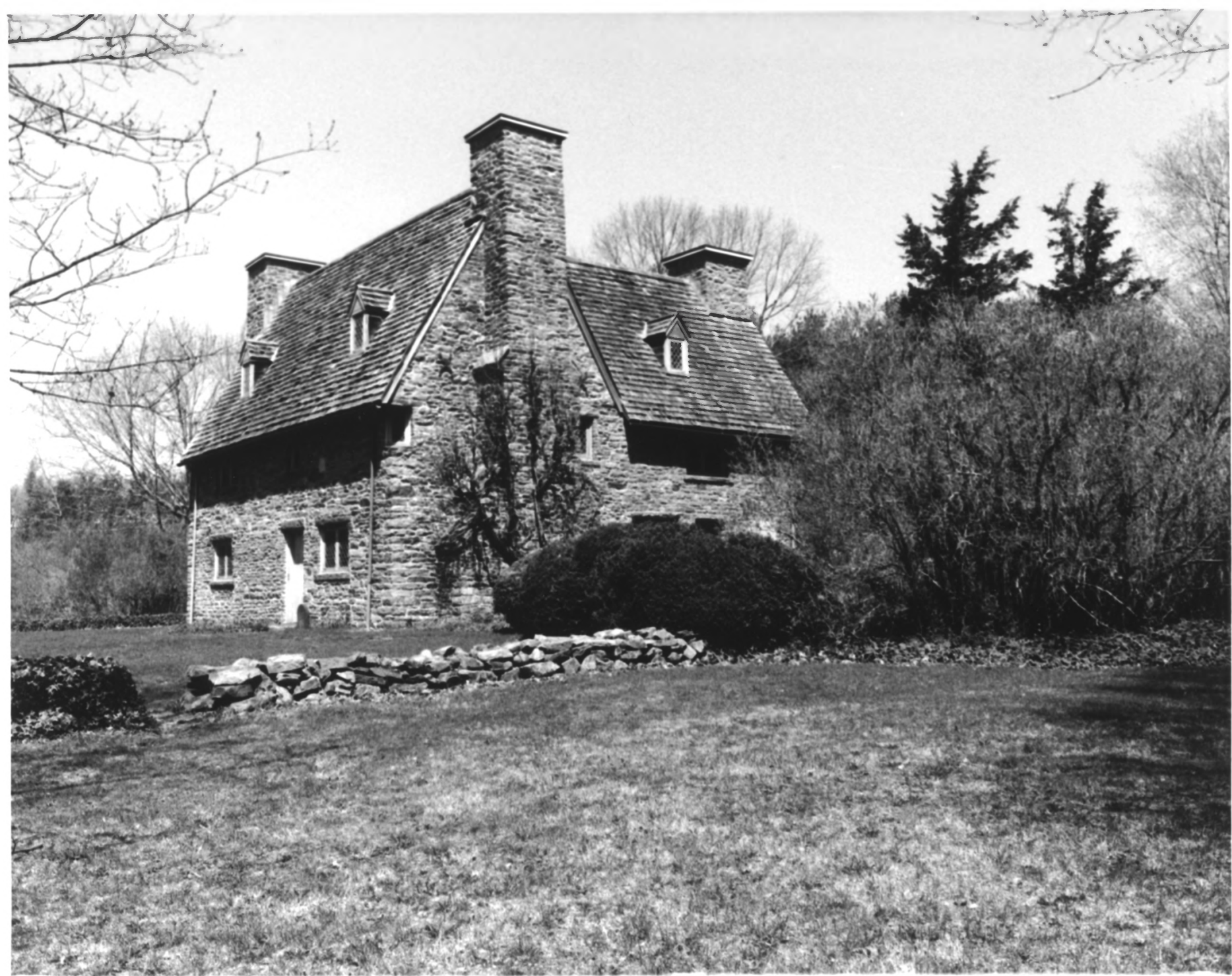
Guilford, Connecticut

West Elevation

Photo: Jan Cunningham, 1995



Whitfield, Henry, House
Guilford, New Haven County, CT
3



Whitfield, Henry, House

Quilford, New Haven County, CT

#4



Whitfield, Henry, House
Guilford, New Haven County, CT

5



Whitfield, Henry, House
Guilford, New Haven County, CT
6




HENRY WHITFIELD HOUSE

Guilford, Connecticut

South Elevation

Photo: Charles Snell, NPS, 1967

A black and white photograph of the Henry Whitfield House, a large, multi-story stone building with a steep gabled roof and several chimneys. The house is heavily covered in ivy, particularly on the left side. The building is surrounded by lush trees and shrubs. The sky is bright and overcast. The photograph is taken from a low angle, looking up at the house.

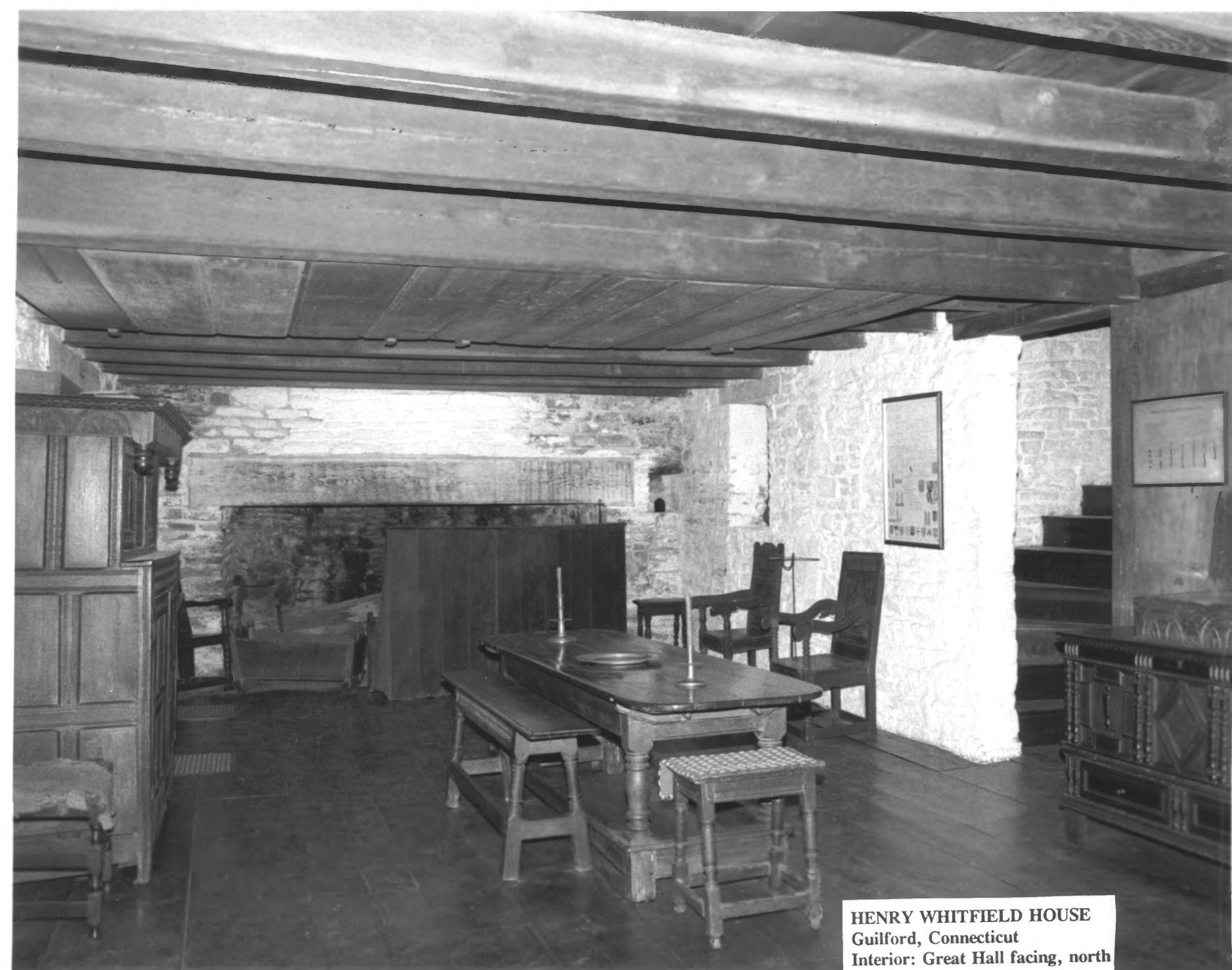
HENRY WHITFIELD HOUSE
Guilford, Connecticut
North Elevation
Photo: Charles Snell, NPS, 1967



HENRY WHITFIELD HOUSE
Guilford, Connecticut
View of 1868 North & West facade
Photo: Henry Whitfield State
Museum

Whitfield House about 1868
when closed for repairs. The
family in charge of the property
spent the winter in the
building at the right of the
picture. This building was
later moved to Guilford Court.

preceding on back of the original
photo loaned by Henry Whitfield
State Historical Museum, Guilford,
Conn.



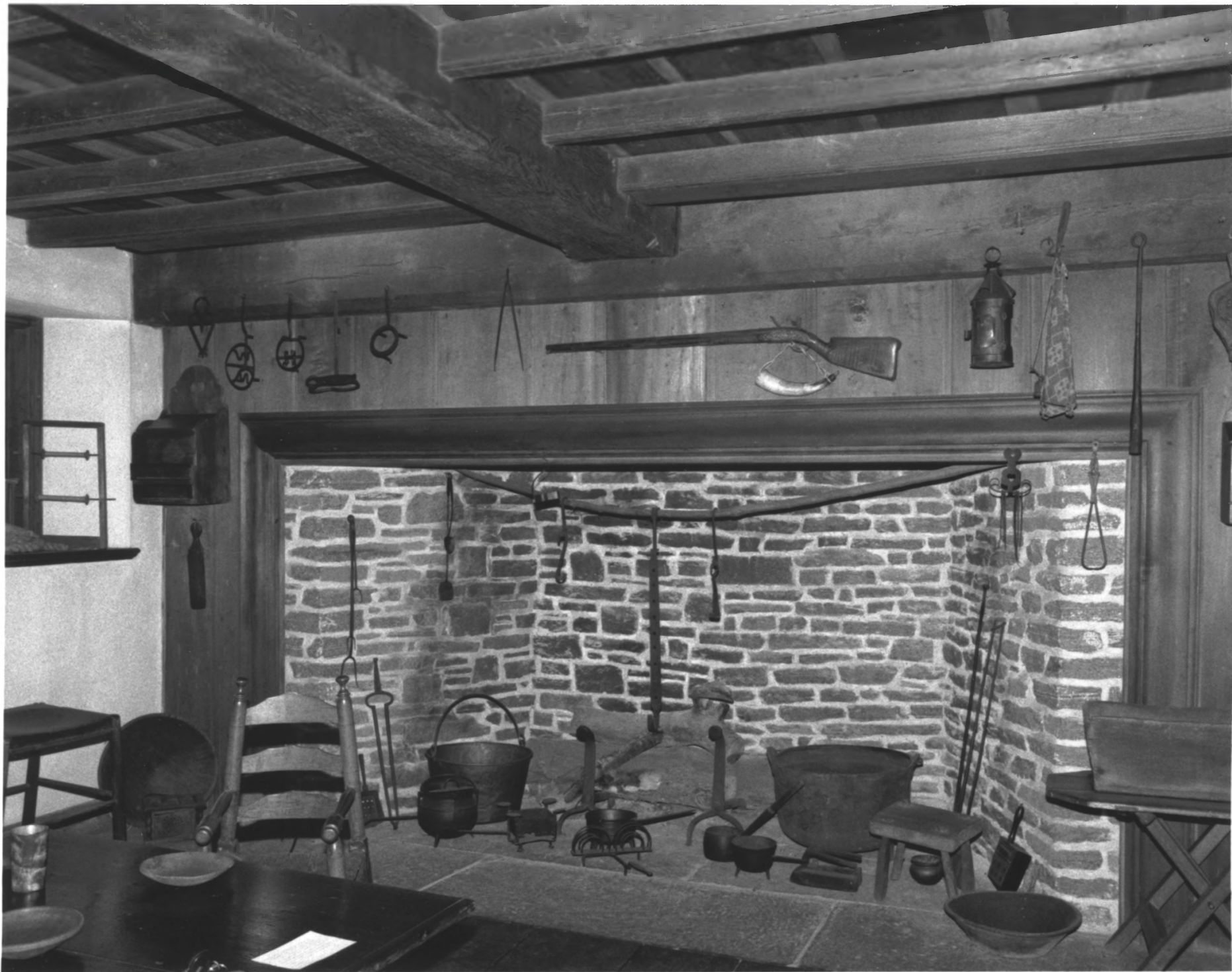
HENRY WHITFIELD HOUSE
Guilford, Connecticut
Interior: Great Hall facing, north
Photo: Jan Cunningham, 1995



Whitfield, Henry, House
Guilford, New Haven County, CT

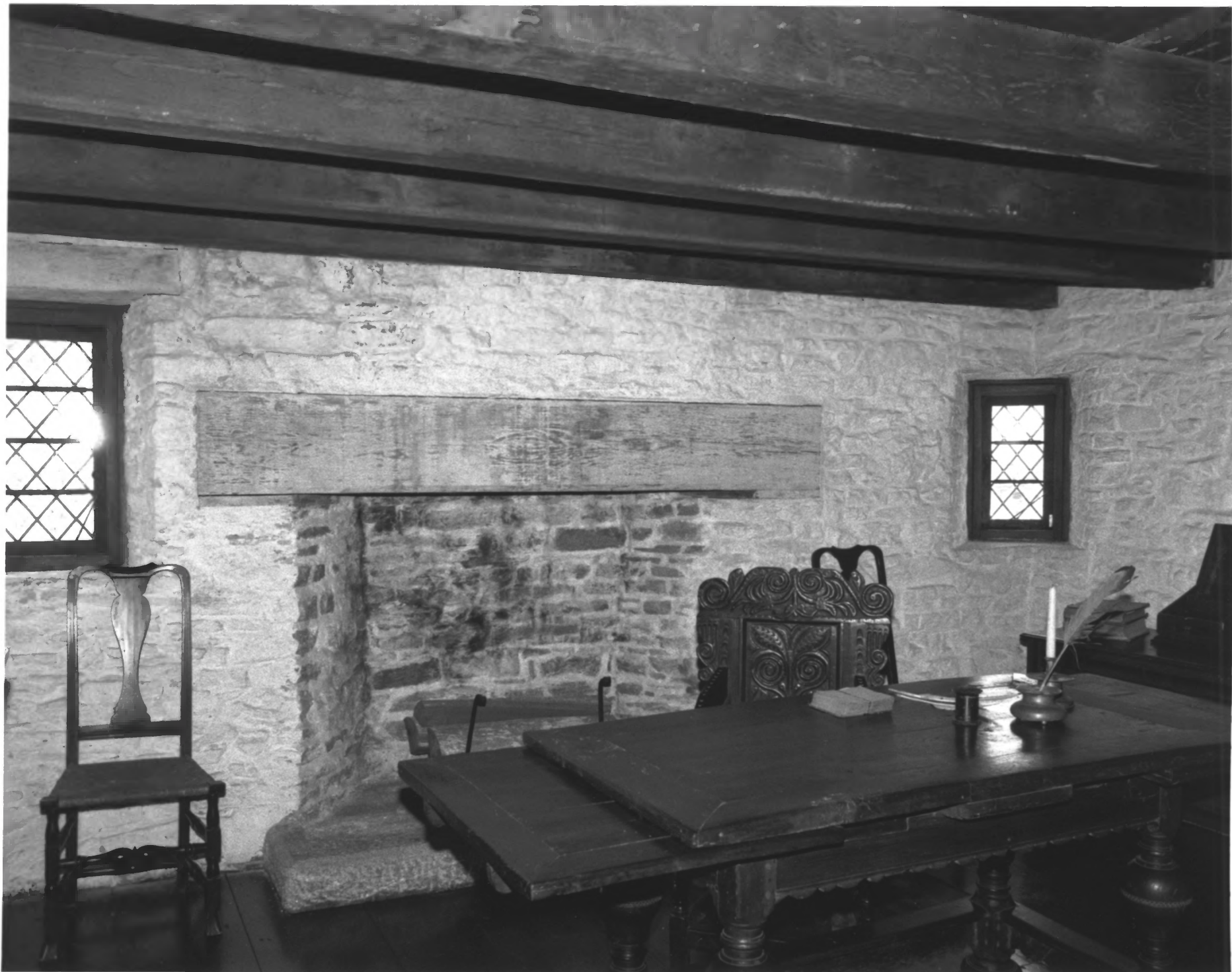
8

1



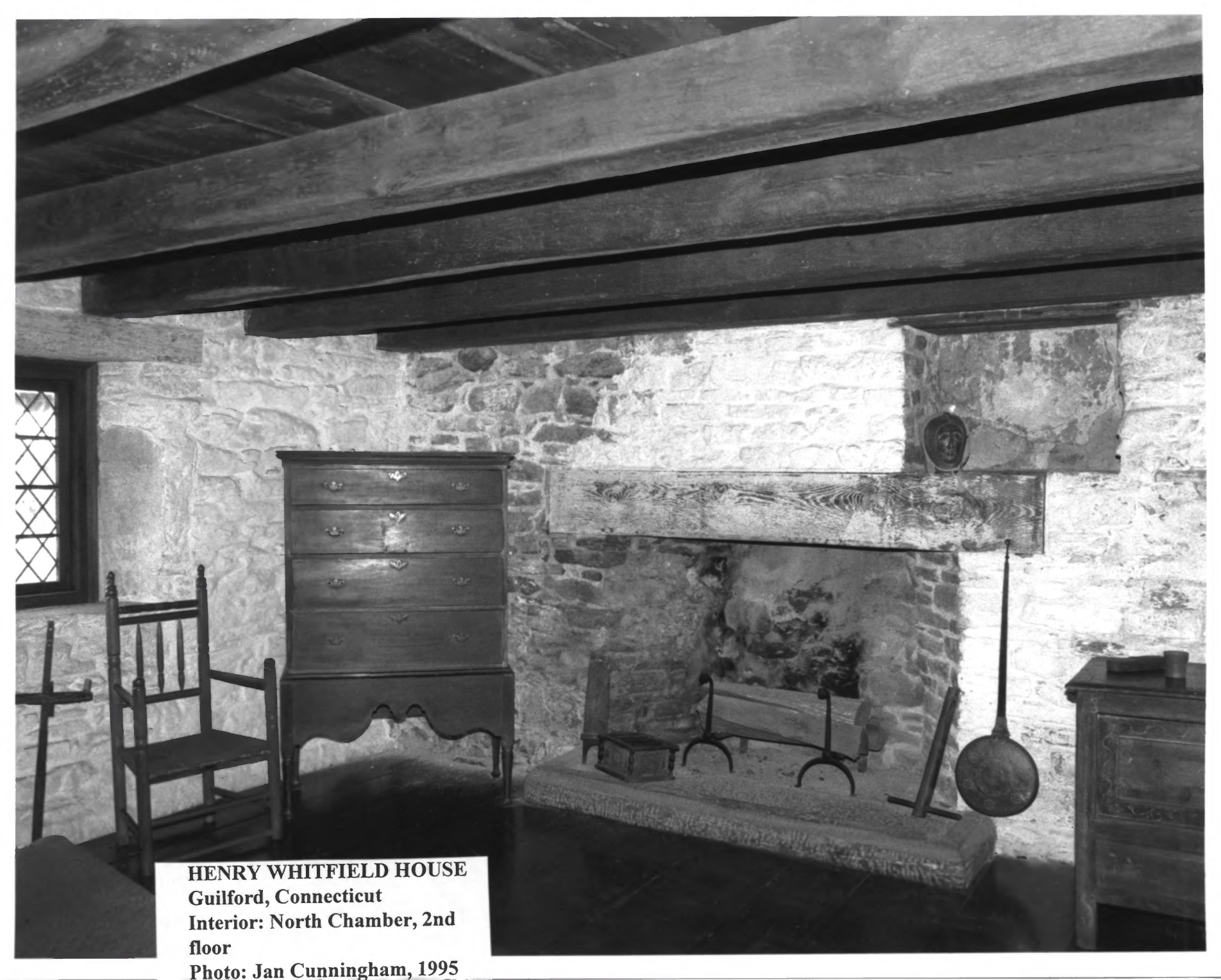
Whitfield, Henry, House
Guilford, New Haven County, CT

9



Whittfield, Henry, House
Guilford, New Haven County, CT

10



HENRY WHITFIELD HOUSE
Guilford, Connecticut
Interior: North Chamber, 2nd
floor
Photo: Jan Cunningham, 1995



Whitfield, Henry, House
Guilford, New Haven County, CT

#12



HENRY WHITFIELD HOUSE
Guilford, Connecticut
Museum Office & Visitor Center
(former barn)
Photo: Jan Cunningham, 1995

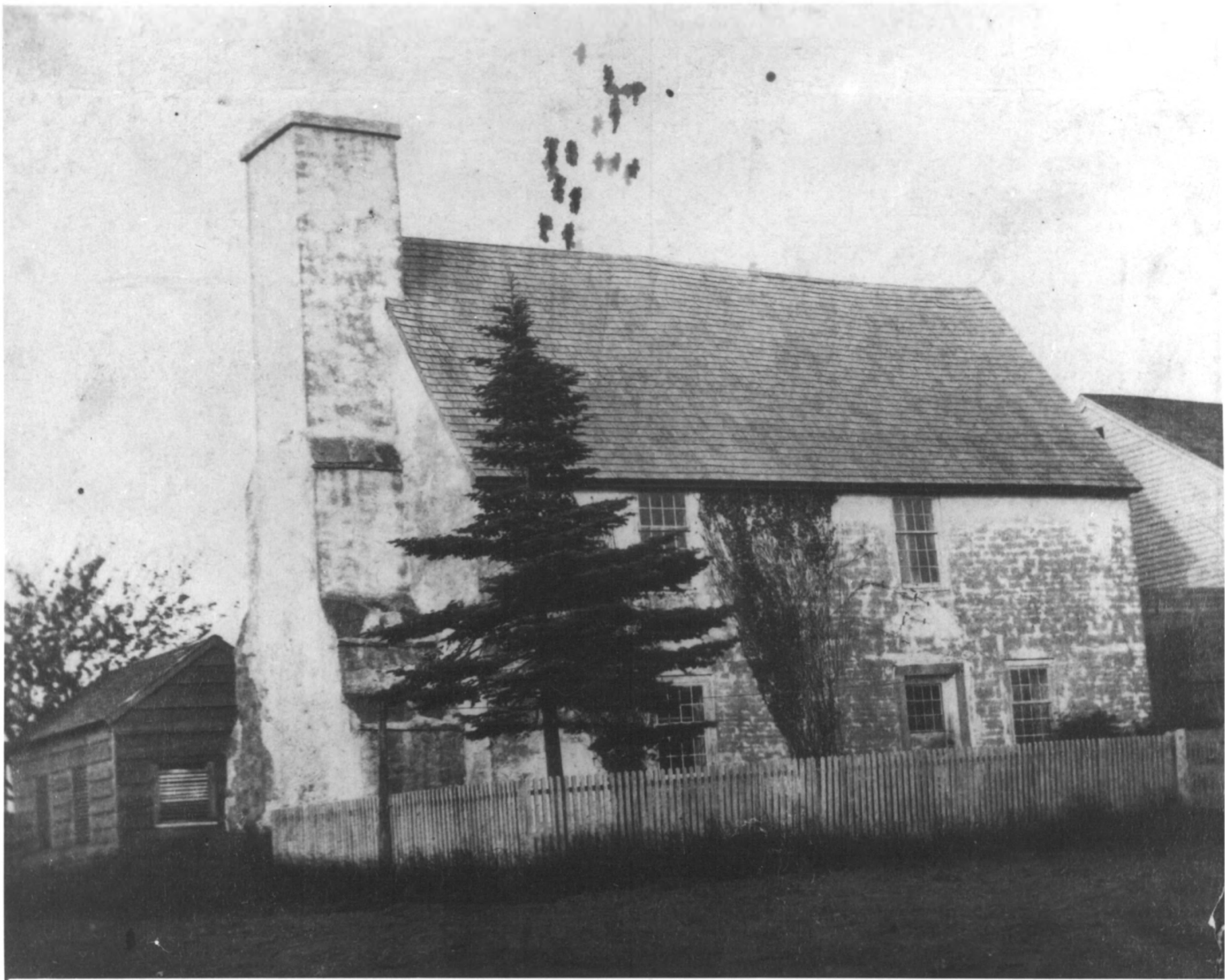


HENRY WHITFIELD HOUSE
Guilford, Connecticut
Barn/Garage
Photo: Jan Cunningham, 1995



Whitfield House, c 1868

Guilford, Conn



GSC

Whitfield House, about
1868, when closed
for repairs. photo

loaned by Henry
Whitfield State
Historical Museum,
Grafton, Conn.



Henry Whitfield House, 1639
West (front) elevation, left, and
south side (right)

Guilford, Connecticut

Sept. 15, 1967

Charles W. Snell

Western Reg. Neg. 4493



Henry Whitfield House, 1639
West (Front) Elevation

Guilford, Connecticut

Sept. 15, 1967

Charles W. Snell

Western Reg. Neg. 4494



Henry Whitfield House, 1639 North end (Center)
and west (front) elevation (right) of main
house. Part of rear wing at left.

Sept. 15, 1967

Charles W. Snell

Western Reg. Neg. 4492



Henry Whitfield House, 1639
North end of main house, right and
North side of rear wing, left

Guilford, Conn.

Sept. 15, 1967

Charles W. Snell

Western Reg. Neg. 4490



Henry Whitfield House, 1639
East end of rear wing (left), and
east (rear) elevation of main house,
right.

Sept. 15, 1967

Charles W. Snell

Western Reg. Neg. 4491

Negative No. 4490

Subject Henry Whitfield House, 1639 North End of Main House, right and north
side of rear wing, left.

Date 9/15/67 Locality Guilford, Conn. By Charles W. Snell



Negative No. 4491

Subject Henry Whitfield House, 1639 East End of rear wing (left), and

east (rear) elevation of main house, right

Date 9/15/67

Locality Guilford, Connecticut

By Charles W. Snell



Negative No. 4492

Subject Henry Whitfield House, 1639 North end (center) and west (front) elevation

(right) of main house. Part of rear wing at left

Date 9/15/67

Locality Gulford, Conn.

By Charles W. Snell

OSC



Negative No. 4493

Subject Henry Whitfield House, 1639 West (front) elevation, left, and south side (right)

Date 9/15/67 Locality Guilford, Conn. By Charles W. Snell



Negative No. 4494

Subject Henry Whitfield House, 1639 West (Front) Elevation

Date 9/15/67 Locality Guilford, Conn By Charles W. Snell

