

TENNESSEE MULTIPLE PROPERTY FORM

RECEIVED

Title: Historic Resources of Williamson County

MAR 03 1988

Historic Name: Jordan, Newton, House (WM-259)

Common Name: Jordan, Newton, House

NATIONAL REGISTER

Classification: Building

Owner: Mrs. Leta Pierce, Route # 1, Box 71, College Grove, TN 37046

Location: On New Road one mile east of TN Highway 41A

Contributing:

Buildings 3
Structures 0
Sites 0

Non-Contributing: 0

Buildings 0
Structures 0
Sites 0

Total: 3

Total: 0

Description:

The Newton Jordan House is a large two-story brick residence constructed ca. 1830. The house was built in a central passage plan and has a two-story brick ell and a full basement. On the main (north) facade is the ghost of a one-story gable roof porch which once existed over the main entrance. It is not known if this porch was original to the house or was a later addition. The main entrance is composed of original double frame doors, two light sidelights with frame lower panels and a two light transom. The house rests on a stone foundation which is slightly raised with ca. 1960 two-light metal windows. Windows throughout the rest of the house are exact replacements of original nine-over-nine sash. These windows have stone lintels and sills.

The house is of Flemish bond brick construction on the main facade with the side and rear facades five course common bond. The house has exterior end brick chimneys and at the roofline is a simple boxed cornice with no decorative detailing. At the rear (south) facade is a one-story frame porch added ca. 1900 with round Doric motif columns. The house has a gable roof of composition shingles.

The interior of the house has been excellently preserved and displays original Greek Revival influenced mantles with Doric motif engaged columns. Door and window surrounds have fluted molding and corner blocks. The staircase in the central hallway is also original with a square newel post and balusters. The basement has a brick floor and at either end are large brick fireplaces which served as the kitchen for the house. No significant alterations have occurred to the interior of the house.

To the west of the house are two original log outbuildings constructed ca. 1830. The smokehouse is a rectangular single pen log building with half dovetail notching and has rock slat and mud chinking. The interior still retains beams and poles for the suspension of meat. The other log building is a single pen wash house also with half dovetail notching and on the west facade are the remains of a stone chimney.

Period of Significance: ca. 1830; ca. 1900

Area of Significance: Architecture

Criterion: C

Architect/Builder: Unknown

Statement of Significance:

The Newton Jordan House is a notable example of a brick ante-bellum central passage plan residence. Constructed ca. 1830, the house is remarkable unaltered with porch alterations ca. 1900 the only major change on both the interior and exterior. The house features its original plan, entrance details and significant interior details. Since 1900 few alterations have occurred to the house and it retains its original site and setting.

The house was built ca. 1830 by Newton and Mary Jordan. Mary Jordan was the daughter of William Jordan who moved to the county in 1810. William Jordan died in 1822 and part of his land was inherited by Mary Jordan. She married her cousin Newton Jordan and they built this substantial brick home. The Jordan House was the center of a large plantation and the house originally fronted on the Murfreesboro Pike which was abandoned in the early 20th century. Jordan owned real estate valued at \$15,000 in 1860 and the farm prospered throughout the 19th century. He died in 1888 with the home remaining in the Jordan family to the present. The Newton Jordan House retains its original architectural character and is an excellent example of an early 19th century brick residence.

Acreage: 1 acre

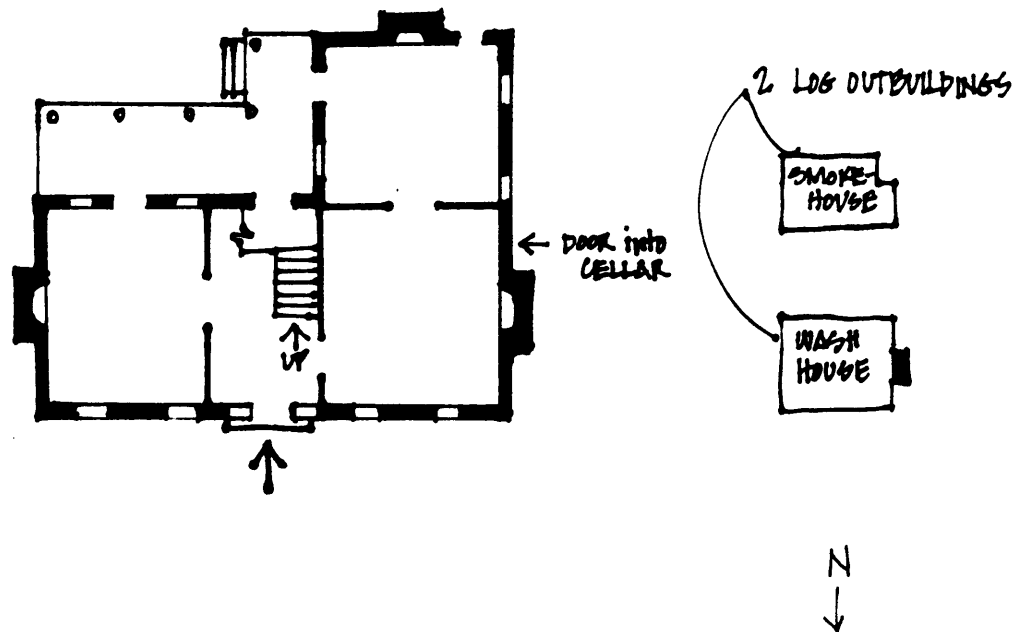
UTM References: College Grove Quad/16/ 532080/3963400

Verbal Boundary Description and Justification: The boundary for the Newton Jordan House is illustrated on accompanying Williamson County tax map # 137, lot 1. The boundary is defined on the north and west by wire fences and on the east and south by driveways and farm lanes. The boundary includes the house and adjacent outbuildings and excludes modern buildings to the south and east. The boundary includes sufficient property to protect the historical setting of the site.

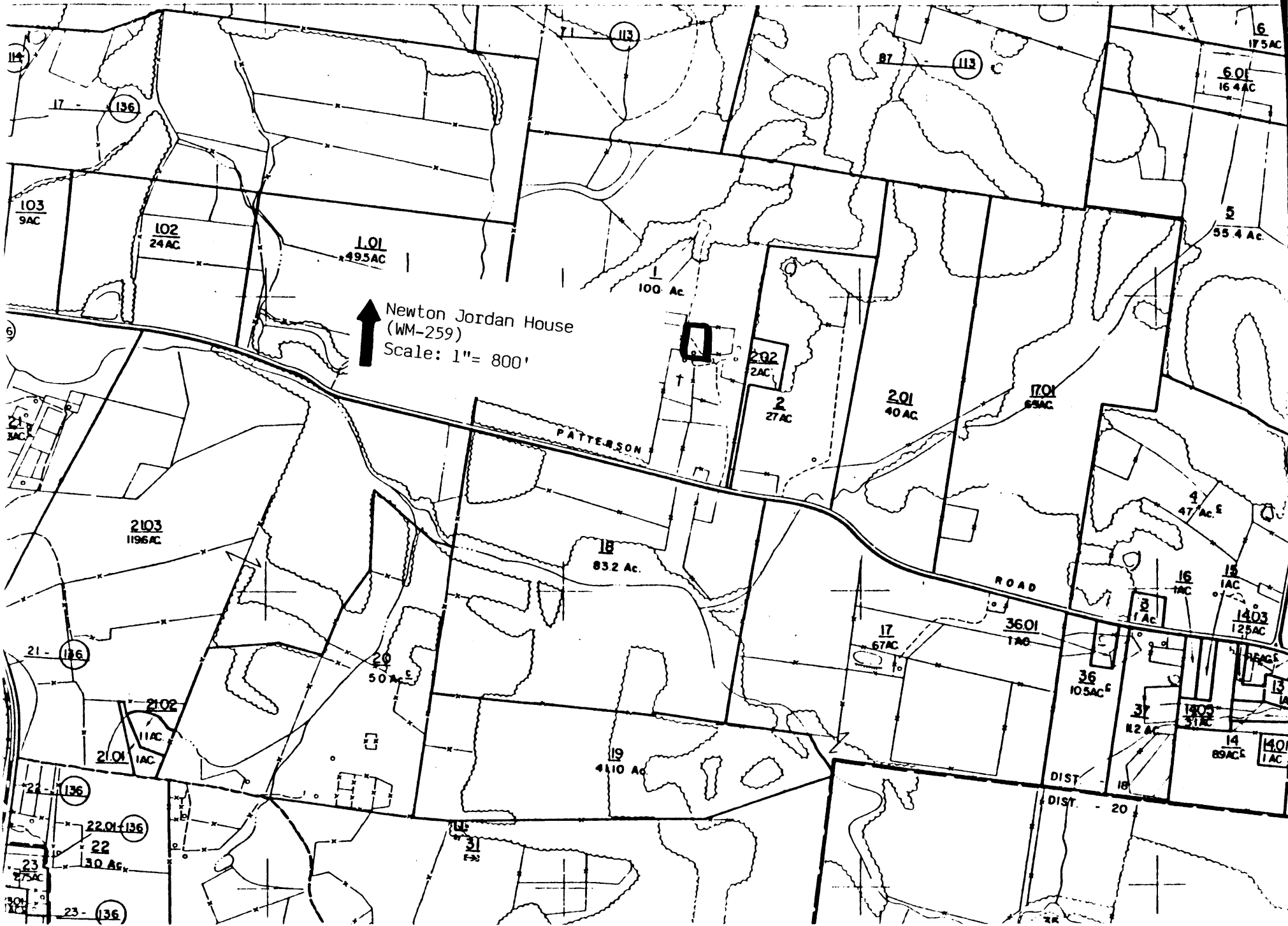
Supplemental Bibliographical References: Historic Williamson County, Bowman

259 NEWTON JORDAN HOUSE

↑
TO
NEW ROAD



Not to SCALE



↑
Newton Jordan House
(WM-259)
Scale: 1" = 800'

PATTERSON ROAD

ROAD

DIST. - 18

DIST. - 20