

United States Department of the Interior
National Park Service
National Register of Historic Places
Registration Form

This form is for use in nominating or requesting determination for individual properties and districts. See instruction in *How to Complete the National Register of Historic Places Registration Form* (National Register Bulletin 16A). Complete each item by marking "x" in the appropriate box or by entering the information requested. If an item does not apply to the property being documented, enter "N/A" for "not applicable." For functions, architectural classification, materials and areas of significance, enter only categories and subcategories from the instructions. Place additional entries and narrative items on continuation sheets (NPS Form 10-900a). Use a typewriter, word processor, or computer, to complete all items.

1. Name of Property

historic name 7-D School

other names/site number 5LA.11145

2. Location

street & number CR 171 north of CR 50.6 [N/A] not for publication

city or town Branson [X] vicinity

state Colorado code CO county Las Animas code 071 zip code 81027

3. State/Federal Agency Certification

As the designated authority under the National Historic Preservation Act, as amended, I hereby certify that this ☒ nomination ☐ request for determination of eligibility meets the documentation standards for registering properties in the National Register of Historic Places and meets the procedural and professional requirements set forth in 36 CFR Part 60. In my opinion, the property ☒ meets ☐ does not meet the National Register criteria. I recommend that this property be considered significant ☐ nationally ☐ statewide ☒ locally. (☐ See continuation sheet for additional comments.)

At W. T.
 Signature of certifying official/Title

Deputy State Historic Preservation Officer

8/24/09
 Date

Office of Archaeology and Historic Preservation, Colorado Historical Society
 State or Federal agency and bureau

In my opinion, the property ☐ meets ☐ does not meet the National Register criteria. (☐ See continuation sheet for additional comments.)

Signature of certifying official/Title

Date

State or Federal agency and bureau

4. National Park Service Certification

I hereby certify that the property is:

- ☒ entered in the National Register
☐ See continuation sheet.
☐ determined eligible for the
 National Register
☐ See continuation sheet.
☐ determined not eligible for the
 National Register.
☐ removed from the National Register
☐ See continuation sheet.
☐ other, explain
☐ See continuation sheet.

Signature of the Keeper

Date of Action

for
Edson H. Beall

12-22-09

7-D School
Name of Property

Las Animas County, Colorado
County/State

5. Classification

Ownership of Property

(Check as many boxes as apply)

- ☒ private
☐ public-local
☐ public-State
☐ public-Federal

Category of Property

(Check only one box)

- ☒ building(s)
☐ district
☐ site
☐ structure
☐ object

Number of Resources within Property

(Do not count previously listed resources.)

Contributing

Noncontributing

1	0	buildings
0	0	sites
0	0	structures
0	0	objects
1	0	Total

Name of related multiple property listing.

(Enter "N/A" if property is not part of a multiple property listing.)

New Deal Resources on Colorado's
Eastern Plains
Rural School Buildings in Colorado

Number of contributing resources

previously listed in the National Register.

0

6. Function or Use

Historic Function

(Enter categories from instructions)

EDUCATION: School

Current Functions

(Enter categories from instructions)

VACANT: Not in use

7. Description

Architectural Classification

(Enter categories from instructions)

Late 19th and Early 20th Century American Movements
Other: WPA Rustic

Materials

(Enter categories from instructions)

foundation	<u>STONE: Sandstone</u>
walls	<u>STONE: Sandstone</u>
roof	<u>METAL</u>
other	<u></u>

Narrative Description

(Describe the historic and current condition of the property on one or more continuation sheets.)

**National Register of Historic Places
Continuation Sheet****United States Department of the Interior
National Park Service**

7-D School
Las Animas County, Colorado
New Deal Resources on Colorado's Eastern Plains MPS
Rural School Buildings in Colorado MPS

Section number 7 Page 1

DESCRIPTION

The 7-D School is located on cattle-grazing land north of the former community of Villegreen. The school lies on the east side of CR 171, a dirt road. The location is very isolated and the school stands alone on the open prairie.

The rectangular plan, single-story school building is 38' x 28' and faces west. The foundation and walls are sandstone. A front-gable roof covers the building and exhibits exposed rafter tails. Tin panels currently cover the original wood shingle roof.

The locally-quarried stone is cut into quarry-faced ashlar blocks of roughly uniform height but varying length. The stone is laid in regular courses with beaded mortar joints (photo 8). This is a decorative technique commonly found on WPA projects in southeast Colorado. The sandstone is multi-colored in hues of tan and red. At the corners of the building, the stone has been hand tooled to create a stippled effect (photo 4). According to the project application, the walls are 18" thick and the foundation extends down 2' to a solid footing. An exterior stone chimney is centered on the rear (east) wall; above the gable ridge, the chimneystack is in poor condition with many fallen stones. There are also several large cracks developing along the mortar joints.

The entrance is on the west side. Two concrete steps lead up to double, wooden vertical plank doors set within a projecting rectangular stone surround with a segmental arch opening. A white-colored block of stone rests above the keystone of the arch and projects slightly above the height of the rectangular surround (photo 3).

There are three large window openings on the south side; these are the only windows. Segmental arches, matching the one at the entrance, top the window openings. The windows rest directly on a stone course without separate sills. The rectangular windows are topped by stone blocks carved to fit within the arched top of the window opening (photo 6). Boards now cover the window openings.

A single-width door opening topped with a segmental arch is located at the north corner of the east wall. The opening contains a wooden, vertical plank door (photo 7).

The interior is a single room with no partitions. A previous owner removed the wooden floor, exposing the concrete foundation beneath. In addition, a previous owner removed the ceiling, exposing the roofing joists (photo 9). Marks on the wall show that a raised platform was once located at the southeast corner of the room. This appears to have held a stove and the teacher's desk.

Integrity

The school is in good condition with the exception of some cracks developing in the mortar. The stone building is unchanged. Beneath the existing metal roofing, added in recent years,

**National Register of Historic Places
Continuation Sheet****United States Department of the Interior
National Park Service**

7-D School

Las Animas County, Colorado

New Deal Resources on Colorado's Eastern Plains MPS

Rural School Buildings in Colorado MPS

Section number 7 Page 2

the original shingle roofing still intact. The original windows are missing and boards now cover the openings. There is no documentation describing the original doors, so it is unknown if these are original or later replacements. On the interior, the original wood floor and the ceiling are gone. The original plaster walls are intact.

The school retains a high degree of integrity of workmanship, feeling, location and setting. The stonework exhibits the handcraftsmanship associated with the WPA and the rural setting is the same as when the school opened. The lack of original windows and interior finishes impacts the integrity of materials. However, these were not major design elements of WPA buildings; these elements were typically inexpensive and often even recycled from older buildings. Since the WPA project included demolishing an old school building on the site, some of these elements may have come from the demolished building. The stonework is the character-defining feature of the building and remains intact.

7-D School
Name of Property

Las Animas County, Colorado
County/State

8. Statement of Significance

Applicable National Register Criteria

(Mark "x" in one or more boxes for the criteria qualifying the property for National Register listing.)

- ☒ **A** Property is associated with events that have made a significant contribution to the broad patterns of our history.
- ☐ **B** Property is associated with the lives of persons significant in our past.
- ☒ **C** Property embodies the distinctive characteristics of a type, period, or method of construction or represents the work of a master, or possesses high artistic values, or represents a significant and distinguishable entity whose components lack individual distinction.
- ☐ **D** Property has yielded, or is likely to yield, information important in prehistory or history.

Criteria Considerations

(Mark "x" in all the boxes that apply.)

Property is:

- ☐ **A** owned by a religious institution or used for religious purposes.
- ☐ **B** removed from its original location.
- ☐ **C** a birthplace or grave.
- ☐ **D** a cemetery.
- ☐ **E** a reconstructed building, object, or structure.
- ☐ **F** a commemorative property.
- ☐ **G** less than 50 years of age or achieved significance within the past 50 years.

Narrative Statement of Significance

(Explain the significance of the property on one or more continuation sheets.)

Areas of Significance

(Enter categories from instructions)

SOCIAL HISTORY

ARCHITECTURE

EDUCATION

Periods of Significance

1936-1949

Significant Dates

1936-1937

Significant Person(s)

(Complete if Criterion B is marked above.)

N/A

Cultural Affiliation

N/A

Architect/Builder

Works Progress Administration (WPA)

9. Major Bibliographical References

Bibliography

(Cite the books, articles and other sources used in preparing this form on one or more continuation sheets.)

Previous documentation on file (NPS):

- ☐ preliminary determination of individual listing (36 CFR 67) has been requested
- ☐ previously listed in the National Register
- ☐ previously determined eligible by the National Register
- ☐ designated a National Historic Landmark
- ☐ recorded by Historic American Buildings Survey

#

- ☐ recorded by Historic American Engineering Record

#

Primary location of additional data:

- ☒ State Historic Preservation Office
- ☐ Other State Agency
- ☐ Federal Agency
- ☐ Local Government
- ☐ University
- ☐ Other

Name of repository:

Colorado Historical Society

7-D School
Name of Property

Las Animas County, Colorado
County/State

10. Geographical Data

Acreage of Property less than one

UTM References

(Place additional UTM references on a continuation sheet.)

1. 13 624 652 4136 729 (NAD27)
Zone Easting Northing

2. Zone Easting Northing

3. Zone Easting Northing

4. Zone Easting Northing

The UTM's were derived by the Office of Archaeology and Historic Preservation from heads up digitization on Digital Raster Graphic (DRG) maps provided to OAHF by the U.S. Bureau of Land Management

☐ See continuation sheet

Verbal Boundary Description

(Describe the boundaries of the property on a continuation sheet.)

Boundary Justification

(Explain why the boundaries were selected on a continuation sheet.)

11. Form Prepared By

name/title Abigail Christman (for property owner)
organization Colorado Preservation, Inc. date May 22, 2009
street & number 333 W. Colfax Ave., Suite 300 telephone 303-893-4260
city or town Denver state CO zip code 80204

Additional Documentation

Submit the following items with the completed form:

Continuation Sheets

Maps

A **USGS map** (7.5 or 15 minute series) indicating the property's location.

A **Sketch map** for historic districts and properties having large acreage or numerous resources.

Photographs

Representative **black and white photographs** of the property.

Additional Items

(Check with the SHPO or FPO for any additional items)

Property Owner

(Complete this item at the request of SHPO or FPO.)

name Jack Crowder
street & number 85051 CR 50.6 telephone _____
city or town Branson state CO zip code 81027

Paperwork Reduction Act Statement: This information is being collected for applications to the National Register of Historic Places to nominate properties for listing or determine eligibility for listing, to list properties, and to amend existing listings. Response to this request is required to obtain a benefit in accordance with the National Historic Preservation Act, as amended (16 U.S.C. 470 *et seq.*)

Estimated Burden Statement: Public reporting burden for this form is estimated to range from approximately 18 hours to 36 hours depending on several factors including, but not limited to, how much documentation may already exist on the type of property being nominated and whether the property is being nominated as part of a Multiple Property Documentation Form. In most cases, it is estimated to average 36 hours per response including the time for reviewing instructions, gathering and maintaining data, and completing and reviewing the form to meet minimum National Register documentation requirements. Direct comments regarding this burden estimate or any aspect of this form to the Chief, Administrative Services Division, National Park Service, 1849 C St., NW, Washington, DC 20240.

**National Register of Historic Places
Continuation Sheet****United States Department of the Interior
National Park Service**

7-D School

Las Animas County, Colorado

New Deal Resources on Colorado's Eastern Plains MPS

Rural School Buildings in Colorado MPS

Section number 8 Page 3

SIGNIFICANCE

The 7-D School, constructed in 1936 to 1937 under the Works Progress Administration (WPA) is eligible for the National Register under the *New Deal Resources on Colorado's Eastern Plains* Multiple Property Documentation Form (MPDF). The 7-D School meets the registration requirements of one property type delineated in the MPDF: *Educational Buildings (subtype: Primary and Secondary School Facilities)*.

The 7-D School meets Criterion A in the area of **Social History** for its association with President Franklin Roosevelt's New Deal legislative agenda to rescue the United States from the Great Depression. This agenda included the creation of an unprecedented number of policies, programs, and agencies to provide relief, create jobs, conserve natural resources, and assist in construction of public works—all with the greater goal of stimulating the devastated economy. Constructed by the WPA, the 7-D School presents an important record of the federal relief programs administered in Colorado's Eastern Plains during the Great Depression. Though the dire economic conditions of the Depression affected all of Colorado, drought and dust storms hit the agricultural-based economy of the Eastern Plains especially hard. The construction of the school provided much-needed employment in an isolated, rural area of Las Animas County where little other work was available.

Additionally, the 7-D School meets Criterion C in the area of **Architecture** as a good example of WPA Rustic architecture applied to a simple, one-room school building. The stonework displays the labor-intensive hand-craftsmanship that typifies the work of the WPA in southeastern Colorado. This craftsmanship is particularly characteristic of projects from rural Las Animas County since there was little access to construction machinery or pre-fabricated materials, but many local stone quarries. The WPA work crew was responsible for quarrying and finishing all the stone used in the building. Most of the WPA crew were farmers or ranchers with little previous construction experience who learned the necessary masonry skills on the job.

The 7-D School meets Criterion A for its significance in the area of **Education**. Educational facilities were a major focus of New Deal construction projects. The school is an excellent example of WPA efforts to improve rural education facilities in eastern Las Animas County. The WPA constructed new schools and barns for several rural school districts and repaired the facilities of many others. This building, constructed for a small school district with minimal matching funds, reflects WPA efforts to improve education and to help small communities with limited resources.

The 7-D School also meets the registration requirements of the schoolhouse property type as delineated in the Multiple Property Documentation Form *Rural School Buildings in Colorado*.

The period of significance for Social History and Architecture is 1936 to 1937, the WPA construction period. The period of significance for Education begins in 1937 when the building opened as a school and extends to 1949 when the school closed.

**National Register of Historic Places
Continuation Sheet****United States Department of the Interior
National Park Service**

7-D School

Las Animas County, Colorado

New Deal Resources on Colorado's Eastern Plains MPS

Rural School Buildings in Colorado MPS

Section number 8 Page 4

Historical Background

The population of eastern Las Animas County grew rapidly in the first few decades of the twentieth century in response to new homesteading acts. The Enlarged Homestead Act of 1909 increased the number of acres per homesteader to 320 in areas where the land could not be irrigated. Scientific moisture management methods, including deep seeding, contour furrowing, and soil aeration, were widely promoted as the key to farming lands formerly thought barren. The Stock Raising Act of 1916 promoted ranching by allowing homesteads of 640 acres on lands determined suitable only for grazing. A few years of above normal rainfall on the plains, rising agriculture prices, and the growth of the railroads in conjunction with the Dry Farming Movement and new homestead acts, combined to stimulate a land rush to this region. The new homesteaders were mainly Anglo-Americans who came from the neighboring plains states of Texas, Oklahoma, Kansas, Nebraska, and Missouri. They staked out 320- and 640-acre claims on the flats and tried to dryland farm. In 1900, Las Animas County had a population of 21,842. By 1910, the population had grown to 33,643 and in 1920 it was 38,975. Initially the homesteaders experienced success with higher than average rainfall in the 1920s.

The dramatic rise in population led to the establishment of many new school districts. The 7-D School District (District #107) was one of ten school districts established in Las Animas County in 1919. The county established more than 30 new districts in eastern Las Animas County between 1910 and 1920. These schools served a population spread out on farms and ranches. Because of the difficulty of travel and the fact that most students walked or rode horses to school, efforts were made to locate schools close enough that children would not have to travel more than five miles to school. The closest school to the 7-D School was at Villegreen, approximately eight miles to the southeast; it was established in 1917.

In 1920, 35 students attended the original 7-D School (the second 7-D School is the subject of this nomination). None of the students was born in Colorado. Most of them had moved to the area from Texas. However, in the 1930s, these small school districts suffered. Already limited in resources due to their small size, the drought, dust storms, and the Depression hit the districts hard. Many homesteaders defaulted on loans and could not pay school taxes. The harsh conditions of the 1930s drove other homesteaders away, reducing the number of residents supporting the schools. By 1940, the population of Las Animas County plummeted to 32,369. By 1950, it was just 25,902.

New Deal programs first assisted these rural school districts under the Civil Works Administration (CWA); the New Deal administration organized it in late 1933. Designed to be a public works program that put people to work quickly, the CWA provided immediate relief to help people through the winter of President Roosevelt's first year in office. Jobs were typically small, since the intent was for projects to last only 90 days. In eastern Las Animas County, there were many projects to improve roads and rural schools. School projects included repairing existing school facilities, constructing gymnasiums at Branson and Kim, and building a barn for the Prairie Star School. In December 1933, the county submitted a CWA

**National Register of Historic Places
Continuation Sheet****United States Department of the Interior
National Park Service**

7-D School

Las Animas County, Colorado

New Deal Resources on Colorado's Eastern Plains MPS

Rural School Buildings in Colorado MPS

Section number 8 Page 5

application for improvements to the 7-D School, including quarrying additional rock, repairing the school building, and building horse sheds. Though approved, work never started on the project.

The Works Progress Administration (WPA), established in May 1935, continued efforts to both improve schools and provide jobs in rural Las Animas County. The WPA was the major source of public jobs for the unemployed during the latter part of the thirties. Its main goal was to put the unemployed back to work and off the relief rolls. The WPA designed small useful projects to provide employment for a maximum number of needy "employable" workers in the "shortest time possible." These jobs were especially vital in rural Las Animas County where there was no other work available for farmers and ranchers devastated by drought. The WPA funded numerous road and school projects in eastern Las Animas County in order to provide jobs. In most areas the WPA required local sponsors of projects to provide at least 20 percent of the project funding. The WPA often waived this requirement in this region where the need was so desperate. The WPA constructed one-room schools at Bunker Hill, Long Ridge, 7-D, and Pleasant Valley.

The 7-D School District submitted a WPA project proposal (No. 165-84-2028) on August 6, 1936. It called for the demolition and reconstruction of their 28' x 38' school building. The application called for reusing the stone from the existing building for the new one. The school district and J.M. Broan, a local WPA engineer, prepared the plans and specifications. The total proposed project cost was \$3225 with \$2603 of that sum in federal funds and the rest from the school district. According to the proposal: "The present school building was laid up in mud and is about to collapse. The work . . . is necessary in order to insure a safe building in which the children may attend school." At this time, the school had an enrollment of approximately 25 students. The WPA approved the project on August 24, 1936.

Construction began in October 1936, however the WPA suspended work when it determined the stone from the old school was "unsatisfactory for use in new building" (WPA project file). On January 18, 1937, the district submitted a second project proposal to cover the additional construction costs associated with quarrying new stone. The additional cost was \$2466, which federal funds covered entirely. E.J. Roberts, a local WPA engineer, prepared the revised plans. The district held classes in private homes while the construction was underway. The WPA approved the revised plans on March 25, 1937. The completion date of the new school was June 2, 1937.

The WPA employed an average of 21 men per month on this project. It paid laborers \$44/month, mason helpers and truck drivers \$50/month, masons \$63/month, and the foreman and timekeeper \$125/month.

According to school district records, the total amount spent on the new school by the district was only \$644.24 (this was \$22.24 over the original budget). This figure included lumber, concrete, flooring, shingles, and nails. Though this is a very small amount to pay for a new school, it was a large amount for the 7-D School to pay, more than five times their annual

**National Register of Historic Places
Continuation Sheet****United States Department of the Interior
National Park Service**

7-D School

Las Animas County, Colorado

New Deal Resources on Colorado's Eastern Plains MPS

Rural School Buildings in Colorado MPS

Section number 8 Page 6

budget. The budget for the 1937 to 1938 school year was \$123 with \$40 for wood, \$25 for books, \$15 for teacher's salary, \$25 for incidentals, and \$18 for water.

The school enrollment declined dramatically in the decade after construction of the 7-D School. By 1949, only five students (all from the same family) enrolled for classes. In September 1949, the 7-D School District Board voted to consolidate with the Villegreen School District (District #91). The district held a special election for district residents to vote on consolidation. The residents approved the consolidation with 15 votes; there is no record of any votes against the consolidation. The Villegreen School District operated until 1958 when it consolidated with the Kim School District.

Since its closure, the owners have occasionally used the building for agricultural storage. The current owner purchased a large parcel of agricultural land in 1995 for ranching that encompassed the 7-D School.

**National Register of Historic Places
Continuation Sheet****United States Department of the Interior
National Park Service**

7-D School

Las Animas County, Colorado

New Deal Resources on Colorado's Eastern Plains MPS

Rural School Buildings in Colorado MPS

Section number 9 Page 7**BIBLIOGRAPHY**

Doggett, Suzanne and Holly Wilson. *Rural School Buildings in Colorado*. National Register Multiple Property Documentation Form, 1999. Denver, CO: Office of Archaeology and Historic Preservation, Colorado Historical Society.

Wolfenbarger, Deon. *New Deal Resources on Colorado's Eastern Plains*. National Register Multiple Property Documentation Form, 2005. Denver, CO: Office of Archaeology and Historic Preservation, Colorado Historical Society.

Works Project Administration project file. National Records and Archives Administration, College Park, Maryland.

**National Register of Historic Places
Continuation Sheet****United States Department of the Interior
National Park Service**

7-D School

Las Animas County, Colorado

New Deal Resources on Colorado's Eastern Plains MPS

Rural School Buildings in Colorado MPS

Section number 10 Page 8**GEOGRAPHICAL DATA****VERBAL BOUNDARY DESCRIPTION**

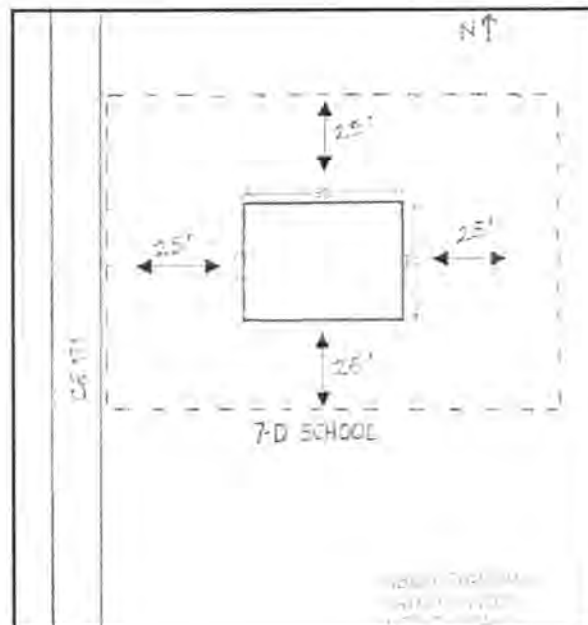
The nominated parcel includes land immediately surrounding the school building forming a rectangle extending 25 feet from the east, west, north, and south walls (as shown on the map below) and found in the NW $\frac{1}{4}$ of the NW $\frac{1}{4}$ of the NW $\frac{1}{4}$ of the SW $\frac{1}{4}$ of Section 4, Township 31 South, Range 55 West, of the Sixth PM, lying east of County Road 171, Las Animas County, Colorado. The nominated parcel totals less than one acre.

BOUNDARY JUSTIFICATION

The nominated area includes the parcel of land historically associated with the 7-D School building. The pastureland surrounding the school is used for cattle ranching.

Site Map

Dashed lines indicates boundary location



**National Register of Historic Places
Continuation Sheet****United States Department of the Interior
National Park Service**

7-D School

Las Animas County, Colorado

New Deal Resources on Colorado's Eastern Plains MPS

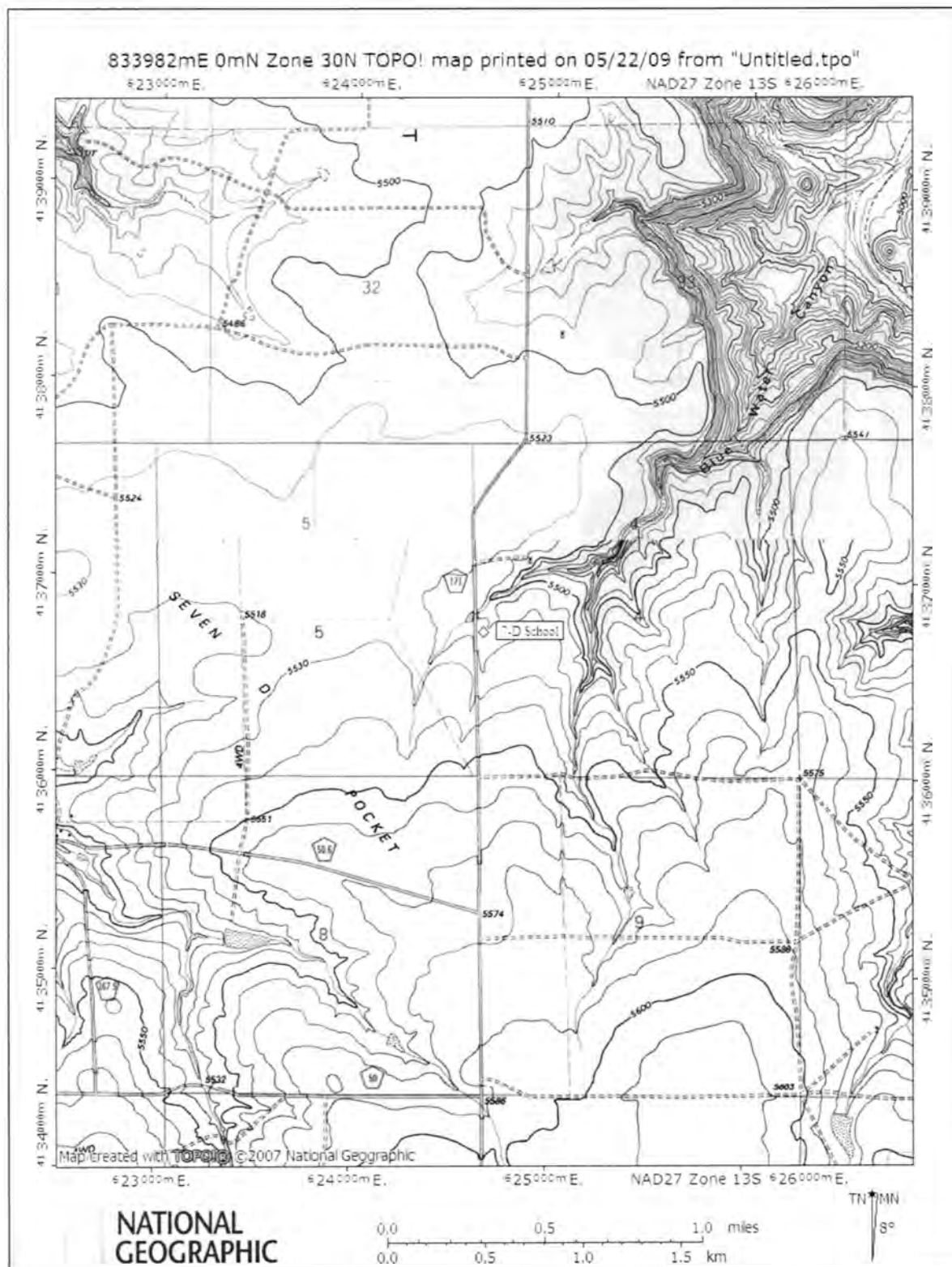
Rural School Buildings in Colorado MPS

Section number 10 Page 9**USGS TOPOGRAPHIC MAP**Villegreen Quadrangle, Colorado
7.5 Minute Series

UTM: Zone 13 / 624652E / 4136729N (NAD27)

PLSS: 6th PM, T 31S, R 55W, Sec. 4 NW¼ NW¼ NW¼ SW ¼

Elevation: 5516 feet



**National Register of Historic Places
Continuation Sheet**United States Department of the Interior
National Park Service

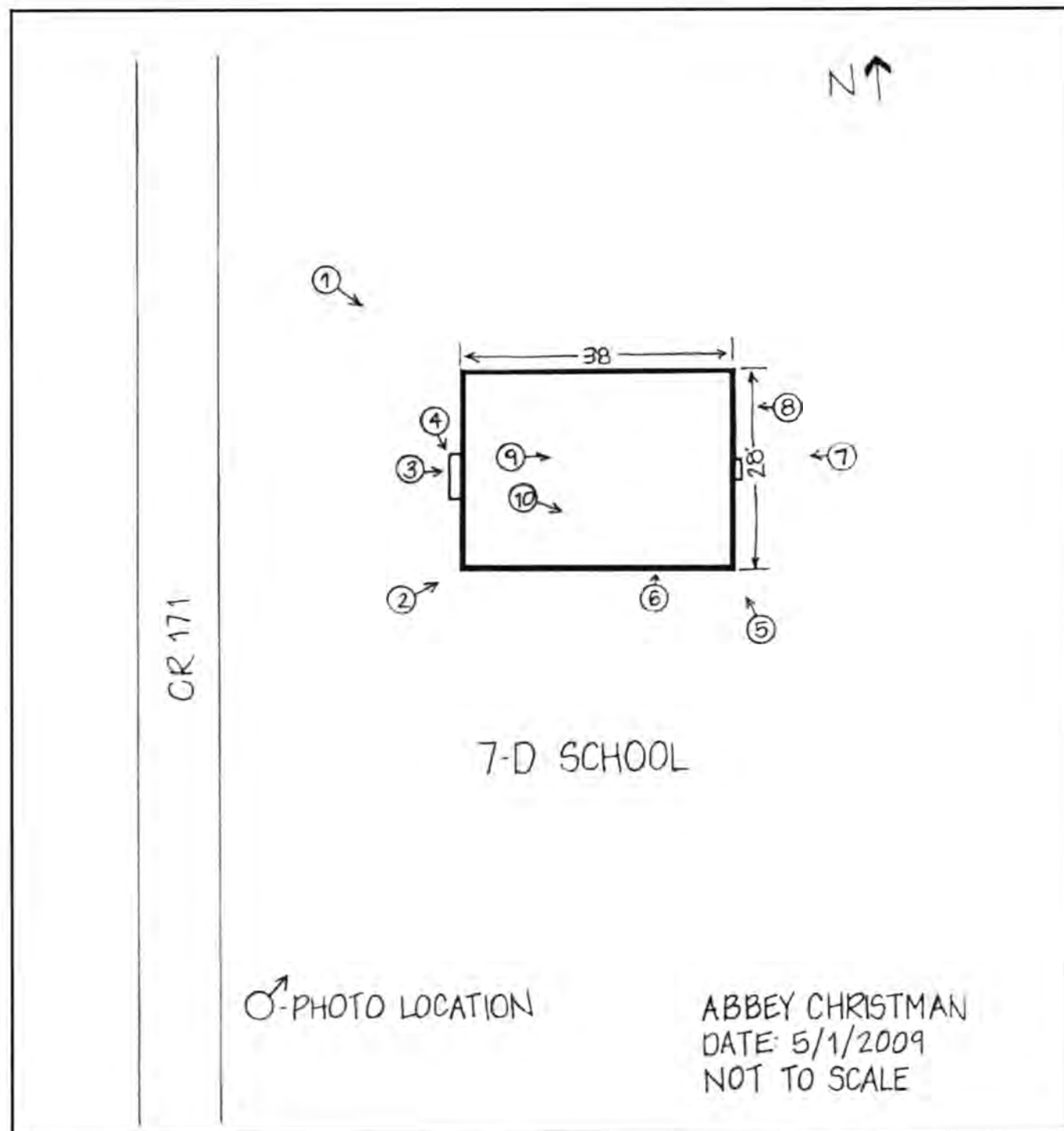
7-D School

Las Animas County, Colorado

New Deal Resources on Colorado's Eastern Plains MPS

Rural School Buildings in Colorado MPS

Section number _____ Page 10



**National Register of Historic Places
Continuation Sheet****United States Department of the Interior
National Park Service**

7-D School

Las Animas County, Colorado

New Deal Resources on Colorado's Eastern Plains MPS

Rural School Buildings in Colorado MPS

Section number _____ Page 11

PHOTOGRAPH LOG

The following information pertains to photograph numbers 1-10:

Photographer: Abbey Christman
Date of Photographs: 5/1/2009
Negatives: TIFF images on CD on file with the National Register,
Washington, D.C.

Photo
No.

Photographic Information

- | Photo No. | Photographic Information |
|-----------|---|
| 1 | North wall, west façade of 7-D School. View to southeast. |
| 2 | West façade, south wall of 7-D School. View to northeast. |
| 3 | Detail of entrance to 7-D School. View to east. |
| 4 | Detail of stippling of stone. View to east. |
| 5 | South wall of 7-D School. View to northwest. |
| 6 | Detail of window opening on south side. View to north. |
| 7 | East wall (rear) of 7-D School. View to west. |
| 8 | Detail of stonework showing beaded mortar joint. |
| 9 | Interior of 7-D School. View to east. |
| 10 | Interior of 7-D School. View to southeast. |

UNITED STATES DEPARTMENT OF THE INTERIOR
NATIONAL PARK SERVICE

NATIONAL REGISTER OF HISTORIC PLACES
EVALUATION/RETURN SHEET

REQUESTED ACTION: NOMINATION

PROPERTY 7-D School
NAME:

MULTIPLE New Deal Resources on Colorado's Eastern Plains MPS
NAME:

STATE & COUNTY: COLORADO, Las Animas

DATE RECEIVED: 11/13/09 DATE OF PENDING LIST: 12/01/09
DATE OF 16TH DAY: 12/16/09 DATE OF 45TH DAY: 12/27/09
DATE OF WEEKLY LIST:

REFERENCE NUMBER: 09001120

REASONS FOR REVIEW:

APPEAL: N DATA PROBLEM: N LANDSCAPE: N LESS THAN 50 YEARS: N
OTHER: N PDIL: N PERIOD: N PROGRAM UNAPPROVED: N
REQUEST: N SAMPLE: N SLR DRAFT: N NATIONAL: N

COMMENT WAIVER: N

☒ ACCEPT ☐ RETURN ☐ REJECT 12-22-09 DATE

ABSTRACT/SUMMARY COMMENTS:

Entered in
The National Register
of
Historic Places

RECOM./CRITERIA _____

REVIEWER _____ DISCIPLINE _____

TELEPHONE _____ DATE _____

DOCUMENTATION see attached comments Y/N see attached SLR Y/N

If a nomination is returned to the nominating authority, the nomination is no longer under consideration by the NPS.





① 7-D School

5LA. 11145

Las Animas County, Colorado








② 7-D School
5LA. 11145

Las Animas County, Colorado










③ 7-D School

5LA. 11145

Las Animas County, Colorado









④ 7-D School

5LA.11145

Las Animas County, Colorado








⑤ 7-D School

5LA.11145

Las Animas County, Colorado





⑥

7-D School

5LA.11145?

Las Animas County, Colorado





⑦ 7-D School

5LA. 1114551

Las Animas County, Colorado







⑧ 7-D School

5LA.11145

Las Animas County, Colorado





⑨ 7-D School

5LA. 11145

Las Animas, County, Colorado





10

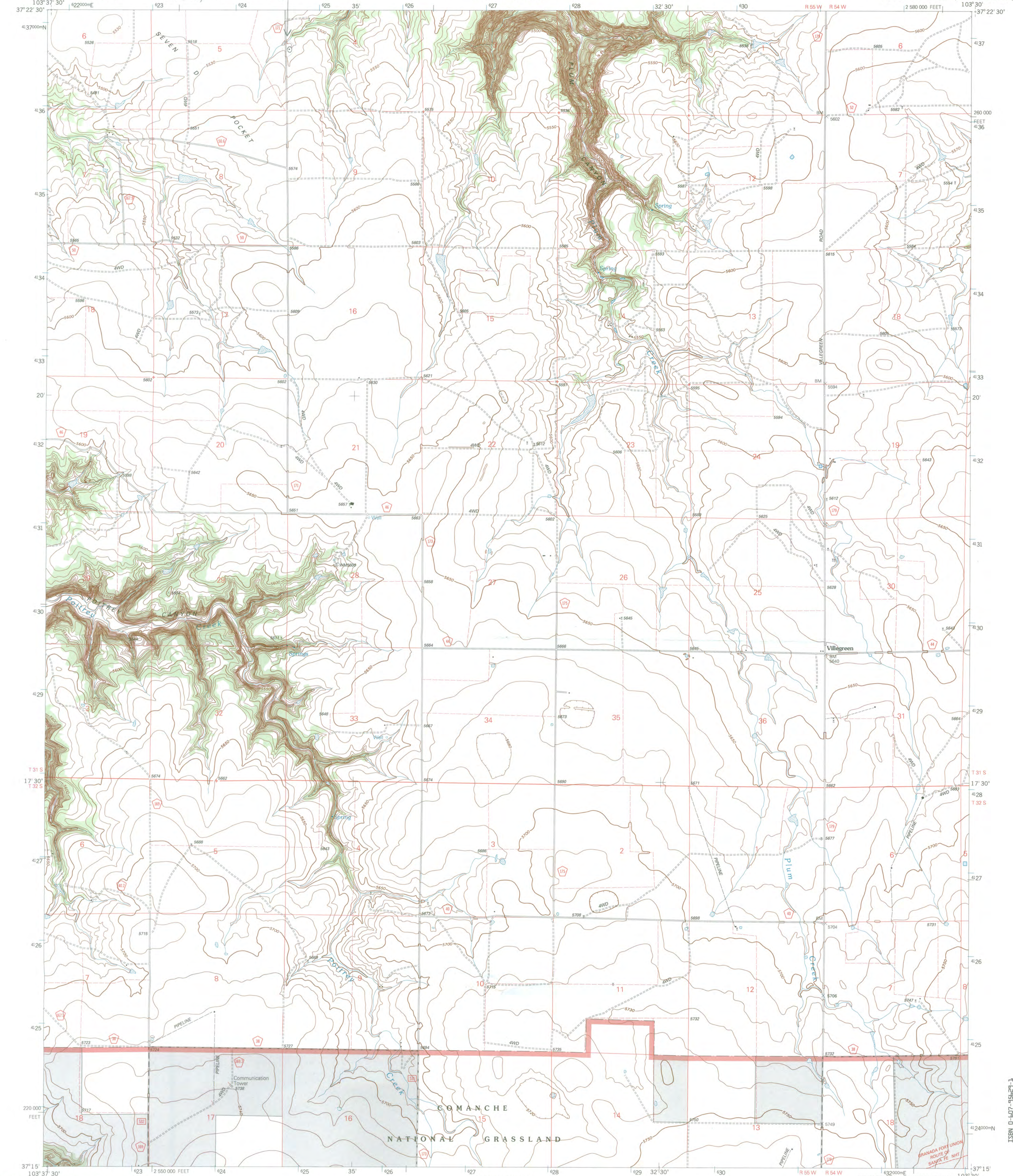
7-D School

5LA. 11145

Las Animas County,

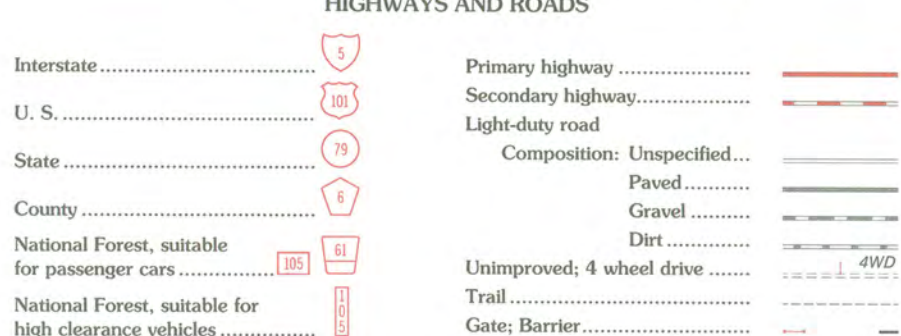
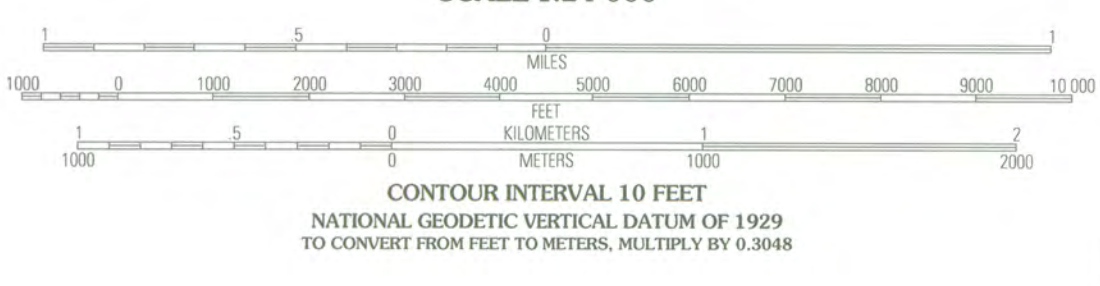
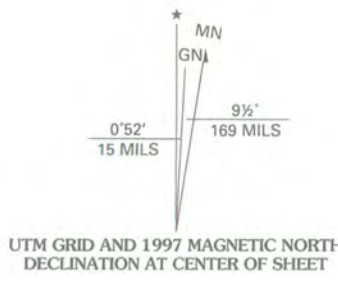
Colorado





Produced by the United States Geological Survey 1984
Revision within and adjacent to National Forest System lands
by USDA Forest Service 1996

Topography compiled 1971. Planimetry derived from imagery taken 1993 and
other sources. Public Land Survey System and survey control current as of 1996
North American Datum of 1927 (NAD 27). Projection and 10 000-foot ticks:
Colorado coordinate system, south zone (Lambert conformal conic)
Blue 1000-meter Universal Transverse Mercator ticks, zone 13
North American Datum of 1983 (NAD 83) is shown by dashed corner ticks
The values of the shift between NAD 27 and NAD 83 for 7.5-minute
intersections are obtainable from National Geodetic Survey NADCON software
Non-National Forest System lands within the National Forest
Inholdings may exist in other National or State reservations
This map is not a legal land line or ownership document. Public lands are
subject to change and leasing, and may have access restrictions; check
with local offices. Obtain permission before entering private lands



1	2	3	1 Johnson Canyon
			2 Plum Canyon
			3 Kettle Canyon
4		5	4 Humbar Spring
			5 Cherry Canyon
			6 Miners Peak
			7 Tober
6	7	8	8 Dalerose Mesa

THIS MAP COMPLIES WITH NATIONAL MAP ACCURACY STANDARDS
FOR SALE BY U.S. GEOLOGICAL SURVEY, P.O. BOX 25286, DENVER, COLORADO 80225
A FOLDER DESCRIBING TOPOGRAPHIC MAPS AND SYMBOLS IS AVAILABLE ON REQUEST

VILLEGREEN, CO
1996
NIMA 5258 1 SE - SERIES V877





OFFICE of ARCHAEOLOGY and HISTORIC PRESERVATION



November 3, 2009

Dr. Janet Snyder Matthews
Keeper of the National Register
National Register of Historic Places
1201 Eye Street, N.W. 8th Floor (MS 2280)
Washington, D.C. 20005-5905

Dear Dr. Matthews:

We are pleased to submit for your review the enclosed National Register of Historic Places nomination for the 7-D School, Las Animas County, Colorado (5LA.11145).

The State Review Board reviewed the nomination at its meeting on August 7, 2009. The board voted unanimously to recommend to the State Historic Preservation Officer that the property met the criteria for listing in the National Register.

We look forward to the formal listing of this property. If you have any questions, please do not hesitate to contact me by phone at 303-866-4684 or by e-mail at heather.peterson@chs.state.co.us.

Sincerely,

Heather Peterson
National & State Register Historian
Office of Archaeology and Historic Preservation
Colorado Historical Society
225 E. 16th Ave., #950
Denver, Colorado 80203
(303) 866-4684
(303) 866-2041 (fax)
heather.peterson@chs.state.co.us

Enclosures
Registration forms
USGS map
Photographs
CD-R