

United States Department of the Interior
National Park Service

National Register of Historic Places
Registration Form

1154

This form is for use in nominating or requesting determinations for individual properties and districts. See instructions in *How to Complete the National Register of Historic Places Registration Form* (National Register Bulletin 16A). Complete each item by marking "x" in the appropriate box or by entering the information requested. If an item does not apply to the property being documented, enter "N/A" for "not applicable." For functions, architectural classification, materials, and areas of significance, enter only categories and subcategories from the instructions. Place additional entries and narrative items on continuation sheets (NPS Form 10-900a). Use a typewriter, word processor, or computer, to complete all items.

1. Name of Property

historic name Logan Cut

other names/site number N/A

2. Location

street & number Historic Channel of Logan Cut; South of Cave Junction, Oregon not for publication

city or town Cave Junction (USDI BLM Medford District) vicinity

state Oregon code OR county Josephine code 033 zip code 97523

3. State/Federal Agency Certification

As the designated authority under the National Historic Preservation Act, as amended, I hereby certify that this nomination request for determination of eligibility meets the documentation standards for registering properties in the National Register of Historic Places and meets the procedural and professional requirements set forth in 36 CFR Part 60. In my opinion, the property meets does not meet the National Register criteria. I recommend that this property be considered significant nationally statewide locally. (See continuation sheet for additional comments.)

[Signature] 8/14/01
Signature of certifying official/Title Date
Preservation Officer, Bureau of Land Management
State of Federal agency and bureau

In my opinion, the property meets does not meet the National Register criteria. (See continuation sheet for additional comments.)

[Signature] 12/14/00
Signature of certifying official/Title Date
Deputy SHPO
Oregon State Historic Preservation Office
State or Federal agency and bureau

4. National Park Service Certification

I hereby certify that the property is:

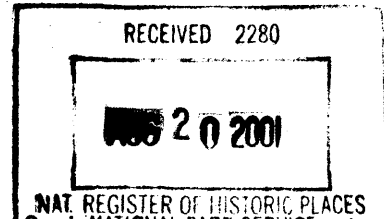
- entered in the National Register.
 See continuation sheet.
- determined eligible for the National Register
 See continuation sheet.
- determined not eligible for the National Register.
- removed from the National Register.
- other, (explain:)

[Signature] Signature of the Keeper Date of Action

Entered in the National Register 10-4-01

United States Department of the Interior
National Park Service

National Register of Historic Places
Registration Form



This form is for use in nominating or requesting determinations for individual properties and districts. See instructions in How to Complete the National Register of Historic Places Registration Form (National Register Bulletin 16A). Complete each item by marking "X" in the appropriate box or by entering the information requested. If an item does not apply to the property being documented, enter "N/A" for "not applicable." For functions, architectural classification, materials, and areas of significance, enter only categories and subcategories from the instructions. Place additional entries and narrative items on continuation sheets (NPS Form 10-900a). Use a typewriter, word processor, or computer, to complete all items.

1. Name of Property

historic name Logan Cut
other names/site number N/A

2. Location

Historic Channel of Logan Cut; South of
street & number Cave Junction, Oregon not for publication
city or town Cave Junction (USDI BLM Medford District) vicinity
state Oregon code OR county Josephine code 033 zip code 97523

3. State/Federal Agency Certification

As the designated authority under the National Historic Preservation Act, as amended, I hereby certify that this nomination request for determination of eligibility meets the documentation standards for registering properties in the National Register of Historic Places and meets the procedural and professional requirements set forth in 36 CFR Part 60. In my opinion, the property meets does not meet the National Register criteria. I recommend that this property be considered significant nationally statewide locally. (See continuation sheet for additional comments.)

Signature of certifying official/Title _____ Date _____

State of Federal agency and bureau _____

In my opinion, the property meets does not meet the National Register criteria. (See continuation sheet for additional comments.)

Signature of certifying official/Title _____ Date _____

State of Federal agency and bureau _____

4. National Park Service Certification

I hereby certify that the property is:

Signature of the Keeper

Date of Action

- entered in the National Register.
 See continuation sheet.
- determined eligible for the National Register
 See continuation sheet.
- determined not eligible for the National Register.
- removed from the National Register.
- other, (explain): _____

Name of Property

County and State

8. Statement of Significance

Applicable National Register Criteria

(Mark "x" in one or more boxes for the criteria qualifying the property for National Register listing.)

- A Property is associated with events that have made a significant contribution to the broad patterns of our history.
B Property is associated with the lives of persons significant in our past.
C Property embodies the distinctive characteristics of a type, period, or method of construction or represents the work of a master, or possesses high artistic values, or represents a significant and distinguishable entity whose components lack individual distinction.
D Property has yielded, or is likely to yield, information important in prehistory or history.

Criteria Considerations

(Mark "x" in all the boxes that apply.)

Property is:

- A owned by a religious institution or used for religious purposes.
B removed from its original location.
C a birthplace or grave.
D a cemetery.
E a reconstructed building, object, or structure.
F a commemorative property.
G less than 50 years of age or achieved significance within the past 50 years.

Areas of Significance

(Enter categories from instructions)

INDUSTRY

Period of Significance

1883-1942

Significant Dates

N/A

Significant Person

(Complete if Criterion B is marked above)

James T. Logan

Cultural Affiliation

N/A

Architect/Builder

Unknown

Narrative Statement of Significance

(Explain the significance of the property on one or more continuation sheets.)

9. Major Bibliographical References

Bibliography

(Cite the books, articles, and other sources used in preparing this form on one or more continuation sheets.)

Previous documentation on file (NPS):

- preliminary determination of individual listing (36 CFR 67) has been requested
previously listed in the National Register
previously determined eligible by the National Register
designated a National Historic Landmark
recorded by Historic American Buildings Survey
recorded by Historic American Engineering Record

Primary location of additional data:

- State Historic Preservation Office
Other State agency
Federal agency
Local government
University
Other

Name of repository:

USDI BLM Medford District

United States Department of the Interior
National Park Service

National Register of Historic Places
Continuation Sheet

Mining Resources of the Upper Illinois Valley
Logan Cut

Section Number: 7 Page: 1

Summary Description

The Logan Cut was begun in 1886 as a giant tailrace and operated in conjunction with hydraulic placer mining in the Llano de Oro mines. The Logan Cut also served the mining operations between 1907 and 1917 under ownership of James T. Logan, (he extended the Cut about 1907) and subsequently those of George Esterly and lessees between 1917 and 1942. The Logan Cut enables us to clearly understand the technology employed in varying periods to extract gold from soils in the Waldo vicinity. It retains integrity of location, design, setting, workmanship and feeling, and accurately conveys the historic associations for which it is significant.

Location and Setting

Two miles of the 3.1 mile-long Logan Cut are on Bureau of Land Management lands and presented for nomination. Located in the northwest and northeast quarters of Section 9, the southwest quarter of Section 10, and the northwest quarter of Section 15, Township 40 South, Range 8 West, W.M., (Josephine County Assessor's Plats 40-8-9 Tax Lot 100; 40-8-10 Tax Lot 400, and 40-8-15, Tax Lots 100 and 300), the Logan Cut can be reached from BLM Road 40-8-4 approximately one mile from that road's intersection with Fernwood Drive. The Cut is situated at an elevation ranging between 1360 to 1440 feet above sea level. Gravels representing placer mining debris are characteristic at the mouth of the cut along the river. Geologically, the area is characterized by gold bearing sediments associated with resorted Tertiary Conglomerate and from re-deposited Llano de Oro formation gravels (Shenon 1933; Budy 1999: 35HS11-496).

The Logan Cut is located in a mixed conifer/ oak woodland with an on plant community characterized by Douglas fir, ponderosa pine, cedar, manzanita, buckbrush, unidentified grasses with lush riparian vegetation in the channel bottom. Water to excavate the Logan Cut was taken from an unidentified mining ditch. The Logan Cut empties into the West Fork Illinois River. Water is available at the mouth of Logan Cut in the West Fork Illinois.

United States Department of the Interior
National Park Service

National Register of Historic Places
Continuation Sheet

Mining Resources of the Upper Illinois Valley

Logan Cut

Section Number: 7 Page: 2

Site Description

The Logan Cut is a massive deep tailrace cut through Llano de Oro gold bearing sediments to access the mines in Carroll Slough and the areas near present Esterly Lakes. The channel is from forty to seventy feet deep. Historian Ward Tonsfeldt described the circumstances of construction for the Cut:

The Llano de Oro, had gravel deposits exceeding 50 feet deep below a relatively flat terrain. The volume of water associated with the hydraulic technology in these mines was considerably more than natural runoff could distribute. As a result, the mines required drainage canals (Tonsfeldt 2000 in Budy 2000: 69).

The portion of the Cut that is located between the West Fork Illinois River outlet and the north edge of Carroll Slough mine in Section 15, T.40 South Range 8 West (W.M.), and crosses federal lands, ranges in depth from forty to seventy feet and is more than one-hundred feet wide. The Logan Cut is a component of a system that included the Logan Esterly Drain Ditches (also nominated to the National Register of Historic Places). These drainage features were constructed somewhat later to drain mining operations in the area known as French Flat. A tunnel located on private lands once connected the two sites (Budy 1999:35HS11-496).

Integrity

The Bureau of Land Management portion of the Logan Cut is well preserved, although some natural erosion and re-vegetation of the channel has occurred. Despite these occurrences, the Logan Cut retains excellent integrity of location, setting, design, (plan) and feeling and conveys the associations with placer mining activities throughout the Waldo vicinity. With the Logan Drain Ditches, the Logan Cut enables the observer's to understand the mining technology that significantly affected development in the Upper Illinois Valley.

United States Department of the Interior
National Park Service

National Register of Historic Places
Continuation Sheet

Mining Resources of the Upper Illinois Valley
Logan Cut

Section Number: 8 Page: 1

Significance

The Logan Cut, constructed in the mid-1880s, developed substantially after 1907, and used until about 1939, is one of six properties nominated to the National Register of Historic Places that is associated with the Logan/Esterly mining operations. The Cut is locally significant for its association with mining in the Upper Illinois Valley, Waldo vicinity. Submitted as part of a multiple property submission, "Mining Resources of the Upper Illinois Valley, Oregon," the Logan Cut represents its associated historic context, "Gold Placer Mining and Development of the Waldo Vicinity, 1851-1942." The Logan Cut meets the registration requirements outlined in the registration document. It was developed in the historic period and in its current configuration represents mining activity of the industrial hydraulic period. The ditch retains its integrity of location, setting, design and feeling and evokes direct historic associations with mining in the Upper Illinois Valley. The Logan Cut is eligible to the National Register of Historic Places under Criterion A as an important, tangible representative of historic mining activities in the Upper Illinois Valley. Developed by James T. Logan after 1907, the Logan Cut has distinct historic associations with Mr. Logan who contributed importantly to the advancement of placer mining in the Upper Illinois Valley between 1900 and 1935.

History

In 1883, George Simmons acquired extensive mining property formerly the Samuel Scott Donation Land Claim. He also acquired ownership of an intermittent waterway known as Carroll (Carron) Gulch from the Carron estate and soon sold a half-interest in the property to Frank Ennis and Theodoric Cameron. Mining records show that Frank Ennis et. al. established the placer location on February 26, 1883 (Josephine County Mining Records 4:368). In 1887 Theodoric Cameron located additional mining ground (Josephine County Mining Records 5:135). Holding 900 acres, the firm was known as Ennis, Simmons and Co. (Josephine County Deeds 3:300; *Rogue River Courier* July 30, 1886; Chapman Publishing Company 1904:229). In 1886 the local newspaper noted:

This company is making an open cut from the river at the outlet of the gulch above the old Fisher ranch which extends up the drain of the Caro gulch about half a mile from the Illinois river. Most has been completed...the plan of opening being the same as that

United States Department of the Interior
National Park Service

National Register of Historic Places
Continuation Sheet

Mining Resources of the Upper Illinois Valley
Logan Cut

Section Number: 8 Page: 2

adopted in Butcher Gulch, the cut being about seventy feet deep, and when completed to the old Caro mine, will be about three and a half miles long. (*Rogue River Courier* July 30, 1886 in Street:1973: 30).

James T. Logan, mine superintendent for the Simmons-Cameron operations, developed the Logan Wash Ditch shortly after 1900 and initiated the use of hydraulic elevators to lift gravels from pits that were more than fifteen below the ground surface in French Flat. Gradually the mines and ditches Logan acquired, took his name (Josephine County Marriage Records; Chapman Publishing Company 1904: 986; *Grants Pass Daily Courier* December 31, 1927, 1:6; *Grants Pass Bulletin* January 29, 1937, 1:6; Josephine County Mining Records, 4:457).

In March 1902, James Logan acquired the Cameron share of the mining property known as the 'Simmons and Cameron claims.' The transfer included improvements described as the Upper Ditch, the Upper race, the Lower Main Pipe Ditch and the main sluice ditch (Josephine County Mining Records 4:476). Beginning about 1907, Logan focused much of his mining efforts on four pits in the French Flat area. While ample water was available during the mining season, Logan operated hydraulic giants in the pits, as well as two hydraulic elevators and one giant for stacking tailings (Shenon 1933:187). The Logan/Esterly Upper and Middle Upper Ditches provided water for these operations. At this time, Logan constructed the Logan Wash Ditch and expanded the large cut that had been developed by Simmons and Cameron. Soon the cavernous cut became known as the Logan Cut.

Simmons, Cameron and Logan had spent large sums making a cut known as the Logan Cut to drain Carroll [Carron] Slough before mining their property, but recouped the expenditure from mining the slough portion of the land in sections 10,15, and 16 of Township 40 South, Range 8 West (*Grants Pass Bulletin*, January 29, 1937, 1:6) (Brooks and Ramp 1969: 242)

James Logan, who was born May 5, 1872 in Ohio, came to Josephine County in the 1890s where he joined Simmons and Cameron in their mining operation. On October 9, 1900, Logan married Ella Simmons, daughter of George and Jane Simmons and assumed

United States Department of the Interior
National Park Service

National Register of Historic Places Continuation Sheet

Mining Resources of the Upper Illinois Valley
Logan Cut

Section Number: 8 Page: 3

management of operations after his father-in-law's death the following year. In 1907, at the height of his success in his Illinois Valley mining ventures, Logan was elected to a term as Josephine County Commissioner. He continued to be actively involved in placer mining in the Waldo vicinity until the early 1930s. James Logan died August 29, 1941 in Grants Pass, Oregon.

In 1916 geologists noted that the Logan Simmons and Cameron mine, "commonly known as the Logan Placer," was under option to George Esterly of Seattle, Washington. Engineer L.A. Levensaler of Tacoma had taken charge of investigating the mining prospects of the property (Parks and Swartley) 1916:143). The authors described the property at that time:

Several long ditches carry water from the higher portions of the east and west forks of the Illinois River to the placer ground...A hydraulic elevator was used to remove material from the pit, which had a maximum depth of about 15 feet. There are three ditches, the water from one being used in the elevator under a head of 325 feet, that from another being employed in 2 giants, and that from the third being used to clear away the tailings from the end of the sluice at the head of the elevator (Parks and Swartley 1916:143)

On June 26, 1917 George and Marilla Esterly, Louis Levensaler, along with James Logan located a placer claim, and on August 16, 1917 James Logan sold his mining operation to the Waldo Corporation. Following the sale, Logan continued mining activities in the Waldo vicinity until the 1930s, when he sold most of his property.

The company that purchased the Simmons Cameron Logan mining property had \$100,000 in capital stock and an office in Seattle. George M. Esterly was the company's general manager (Josephine County Deed Records 28:276; Josephine County Mining Records 23:233-234). George Esterly was born June 15, 1868 in Wisconsin. Described in the Portland Oregonian as "one of the best-known mining men in the west," Esterly was a mechanical and mining engineer who had developed extensive Alaskan mining interests. He and his wife, Marilla Esterly invested personal funds in a sizeable tract, constructed a large dwelling on the property and, gave the name Llano de Oro or Plain of Gold to their

United States Department of the Interior
National Park Service

National Register of Historic Places
Continuation Sheet

Mining Resources of the Upper Illinois Valley
Logan Cut

Section Number: 8 Page: 4

extensive mine. With their purchase the mines and the ditch increasingly became known under the Esterly name. The Esterlys replaced or extensively modified the Logan home near the Waldo road and installed a significant amount of up-to-date mining equipment on the property. Esterly would live out his life at Waldo where he died on December 2, 1931 (*Portland Oregonian* December 4, 1931, 19:5-6).

In December 1920, the Waldo Corporation sold mining property, buildings, barns and equipment, not owned personally by the Esterly family, to Victor H. Elfsendahl and Thad Sweek of Seattle (Josephine County Deeds 52:360). In June 1923, these buyers sold the property to G.W. Hales of Cook County Illinois (Josephine County Deed Records 62:512). In the 1930s, G.W. Hales leased out the mining property to others who worked the property until July 1942 (Hill 1979: 78). The Logan Wash Ditch remained in use by these lessees and other until 1942.

United States Department of the Interior
National Park Service

National Register of Historic Places
Continuation Sheet

Mining Resources of the Upper Illinois Valley
Logan Cut

Section Number: 9 Page: 1

Bibliography

Budy, Elizabeth E.

1999 *Logan Cut Cultural Site Record 35HS11-496 (for USDI-
BLM Medford District)*

2000 *Esterly Lakes Cultural Resource Survey: Human Landscapes in the
Historic Waldo, Takilma, and Blue Creek Mining Districts (Project #99-
53) Prepared for USDI-BLM Medford District, Medford, Oregon.*

Chapman Publishing Company

1904 *Portrait and Biographical Record of Western Oregon*, Chapman
Publishing Company Portland, Oregon.

Hill, Edna May

1976 *Josephine County Historical Highlights I*. Josephine County Library
System and Josephine County Historical Society, Grants Pass, Oregon.

Parks, H.M. and A.M. Swartley

1916 *Handbook of the Mining Industry of Oregon*. Oregon Bureau of Mines and
Geology, Mineral Resources of Oregon, Volume 2, No. 4.

Shenon, Philip J.

1933c *Geology and Ore Deposits of the Takilma-Waldo District, Oregon,
Including the Blue Creek District*. U.S. Geological Survey Bulletin 846-B
Government Printing Office, Washington D.C.

**United States Department of the Interior
National Park Service**

**National Register of Historic Places
Continuation Sheet**

Mining Resources of the Upper Illinois Valley
Logan Cut

Section Number: 10 **Page:** 1

A map showing locations of the twenty resources included in this Multiple Property Submission is contained with the cover document. A photocopied section of a USGS map indicating the location of the Logan Cut is contained within the nomination document.

Verbal Boundary Description

The Logan Cut, (of which 2.0 miles is included in this nomination), is located in the northwest and northeast quarters of Section 9, the southwest quarter of Section 10, and the northwest quarter of Section 15, Township 40 South, Range 8 West, W.M., (Josephine County Assessor's Plats 40-8-9 Tax Lot 100; 300; 40-8-10 Tax Lot 400, and 40-8-15, Tax Lots 100 and 300). The property is identified on USGS map O'Brien quadrangle (7.5 minute series) included with this nomination.

This linear site, a ditch, drains water from the Carroll Slough and French Flat to the West Fork, Illinois River. The nominated portion of the Logan Cut begins at the intersection of the ditch and the western boundary of Tax Lot 300 in the NW $\frac{1}{4}$ of the NW $\frac{1}{4}$ of Section 15, T. 40 S. R. 8 W. (W.M.). The ditch continues North along the 15/16 and 9/10 section lines, then turns West through Section 9 and terminates in the West Fork, Illinois River in the SW $\frac{1}{4}$ of the NW $\frac{1}{4}$ of Section 9, T. 40 S., R. 8 W. (W.M.)

The portions of the Logan Cut thus described constitute the center line of a linear site. The side boundaries of this linear site are lines of convenience parallel to the ditch extending 50 feet on each side of the ditch. The resulting site is 100 feet wide, following the contours of the ditch. The Logan Cut contains 25.942 acres.

Verbal Boundary Justification

The nominated area includes that portion of the Logan Cut and immediate setting on with lands administered by the USDI Bureau of Land Management and associated with historic placer mining activities in the Waldo vicinity.

**United States Department of the Interior
National Park Service**

**National Register of Historic Places
Continuation Sheet**

Mining Resources of the Upper Illinois Valley
Logan Cut

Section Number: 10 **Page:** 2

UTM References

Zone	Location	Easting	Northing
10	1 n. end	445460.68335	4661485.57275
	2 s. end	447051.78549	4659914.56792

**United States Department of the Interior
National Park Service**

**National Register of Historic Places
Continuation Sheet**

Mining Resources of the Upper Illinois Valley
Logan Cut

Section Number: 11 **Page:** 1

Property Owner Notification

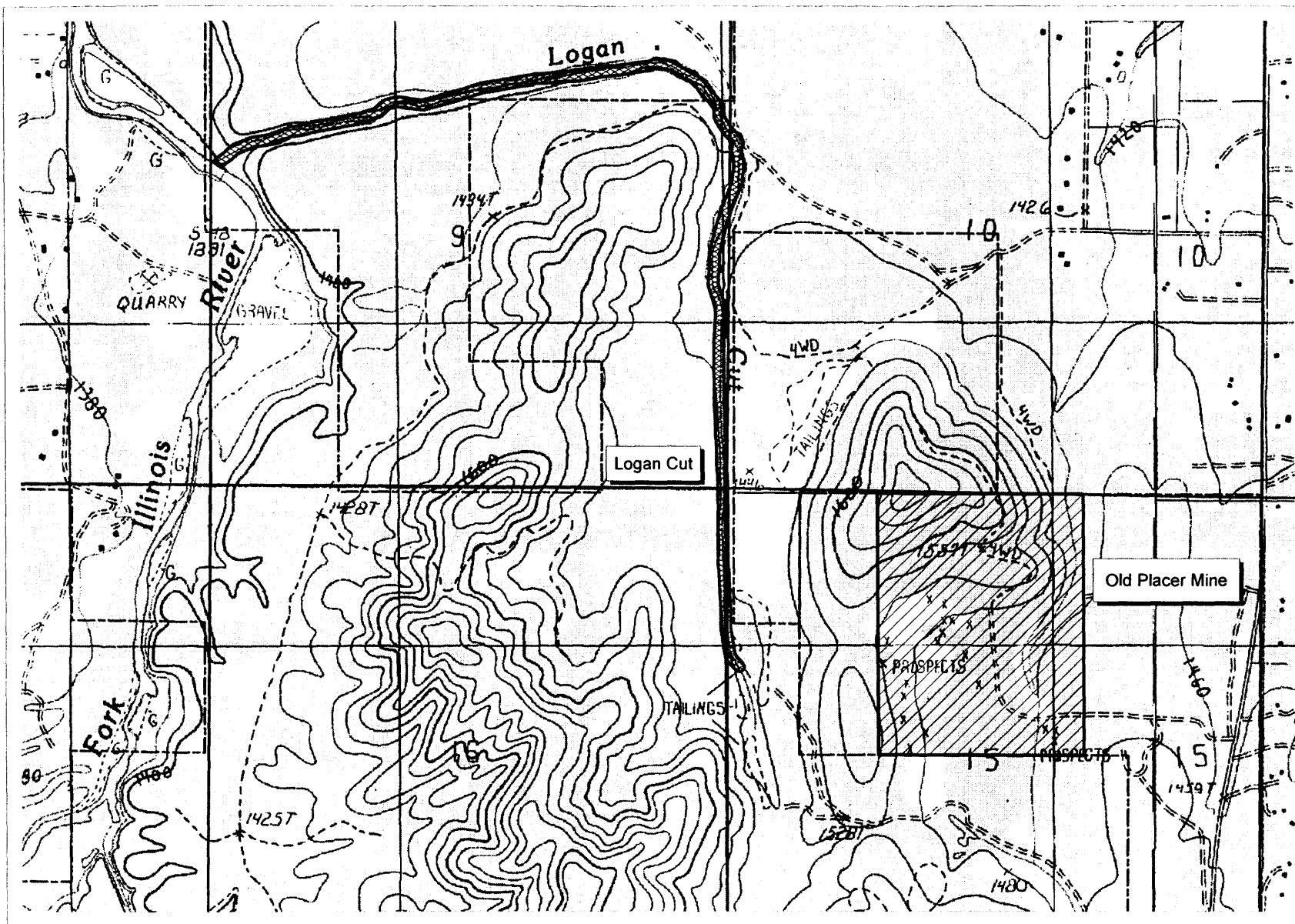
Bureau of Land Management
Ron Wenker, District Manager
Grants Pass Resource Area Manager
Ann Ramage, Archaeologist
Medford Field Office
3040 Biddle Road
Medford OR 97504

Oregon-Washington State Office
Bureau of Land Management
Elaine Zielinski, Director
Richard Hanes, Cultural Resource Lead
PO Box 2965
Portland OR 97208-2965

Federal Preservation Officer Certification

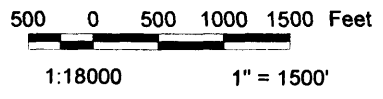
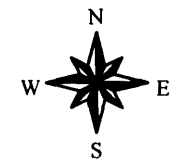
Mr. John G. Douglas, Preservation Officer
Bureau of Land Management (240)
204-LS
18th and C Streets, NW
Washington, DC 20240

Logan Cut

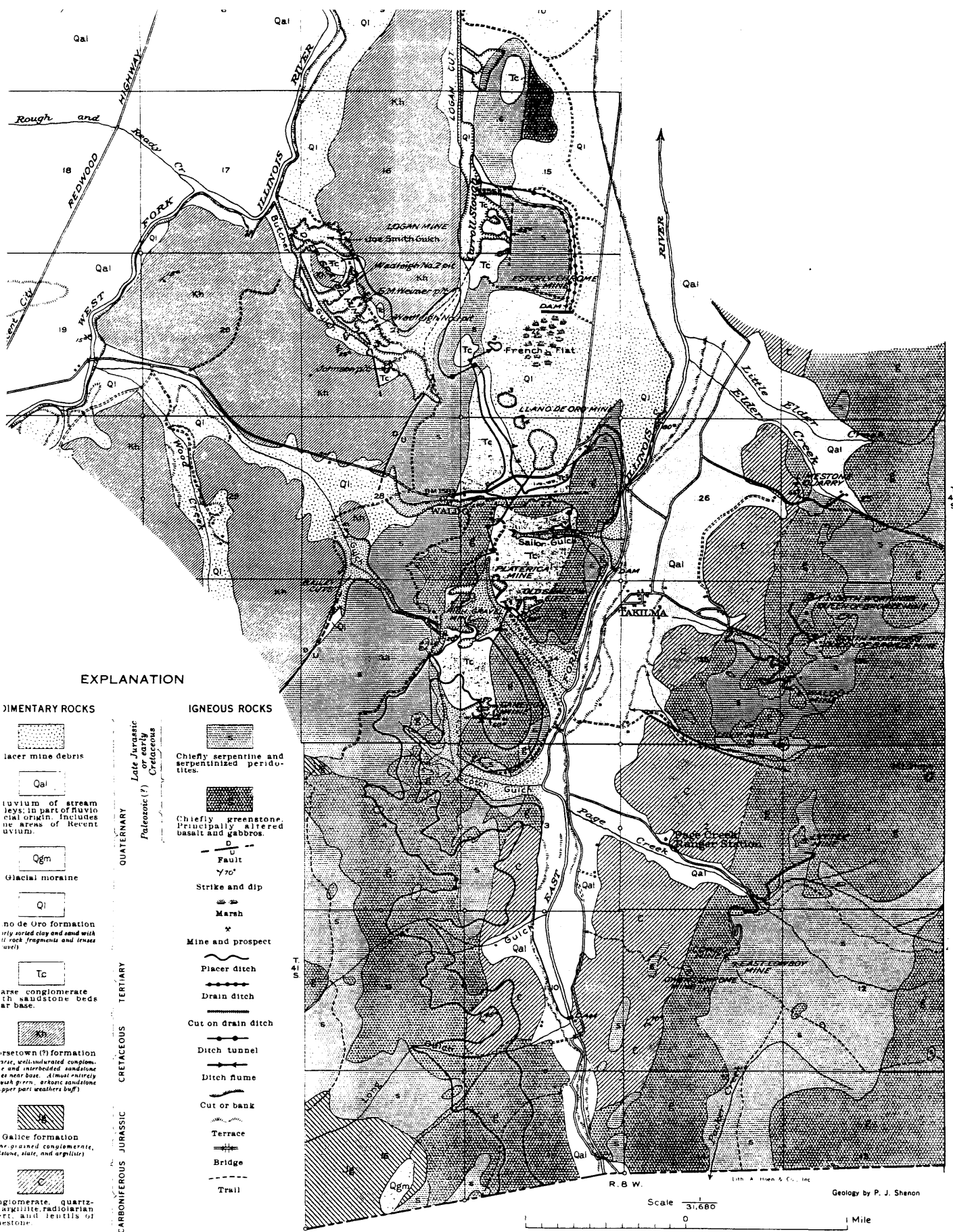


LoganCut
 35HS11-496
 A portion of the
 O'Brien Quad
 (Sec 9, 10, 15, 16
 T40S, R8W, wm)
 showing
 Historic Placer
 Mining Resources
 in the Waldo Vicinity.

- Ditches**
- Logan Cut
 - Logan Wash Ditch
 - Logan/Esterly Drain
 - Middle Ditch
 - Osgood Ditch
 - Upper Ditch
 - Wimer Ditch
- General Symbology**
- Ditches
 - Mines
 - Town, cemetery
 - BLM boundary
 - Section Lines



Map created August 2000 by Ralph Delamarter
 Features based on site investigations by W Tonsfeldt, E Budy and others
 Base images: digital raster graphs (DRG) and digital orthoquads (DOQ)(1995)
 of O'Brien, Takilma and Broken Rib quads (scale 1:24000).



EXPLANATION

SEDIMENTARY ROCKS

- Placer mine debris
- Alluvium of stream beds, in part of fluvial origin. Includes no areas of Recent alluvium.
- Glacial moraine
- No de Oro formation (very sorted clay and sand with rock fragments and lenses of pebbles)
- Arse conglomerate (in sandstone beds at base)
- Rosemont (?) formation (fine, well-sorted sandstone and interbedded sandstone at base. Almost entirely well-sorted, arkose sandstone (partly weathers buff))
- Galice formation (fine-grained conglomerate, stone, slate, and argillites)
- Conglomerate, quartzite, argillite, radiolarian, etc. and Tertiary (?) residue

QUATERNARY
 Late Jurassic to early Cretaceous
 Paleocene (?)
 TERTIARY
 CRETACEOUS
 JURASSIC
 CARBONIFEROUS

IGNEOUS ROCKS

- Chiefly serpentine and serpentinized peridotites.
- Chiefly greenstone. Principally altered basalt and gabbro.
- Fault
- Strike and dip
- Marsh
- Mine and prospect
- Placer ditch
- Drain ditch
- Cut on drain ditch
- Ditch tunnel
- Ditch flume
- Cut or bank
- Terrace
- Bridge
- Trail

GEOLOGIC MAP OF THE TAKILMA-WALDO DISTRICT, JOSEPHINE COUNTY, OREGON

1933

Scale 1/31,680

Geology by P. J. Shenon