



Albion Historic District
Lincoln, Rhode Island

Photographer: Pamela Kennedy
Date: July, 1980

Negative: Rhode Island Historical Preservation
Commission

View: Albion Mill, School Street from the east.

Photo #1

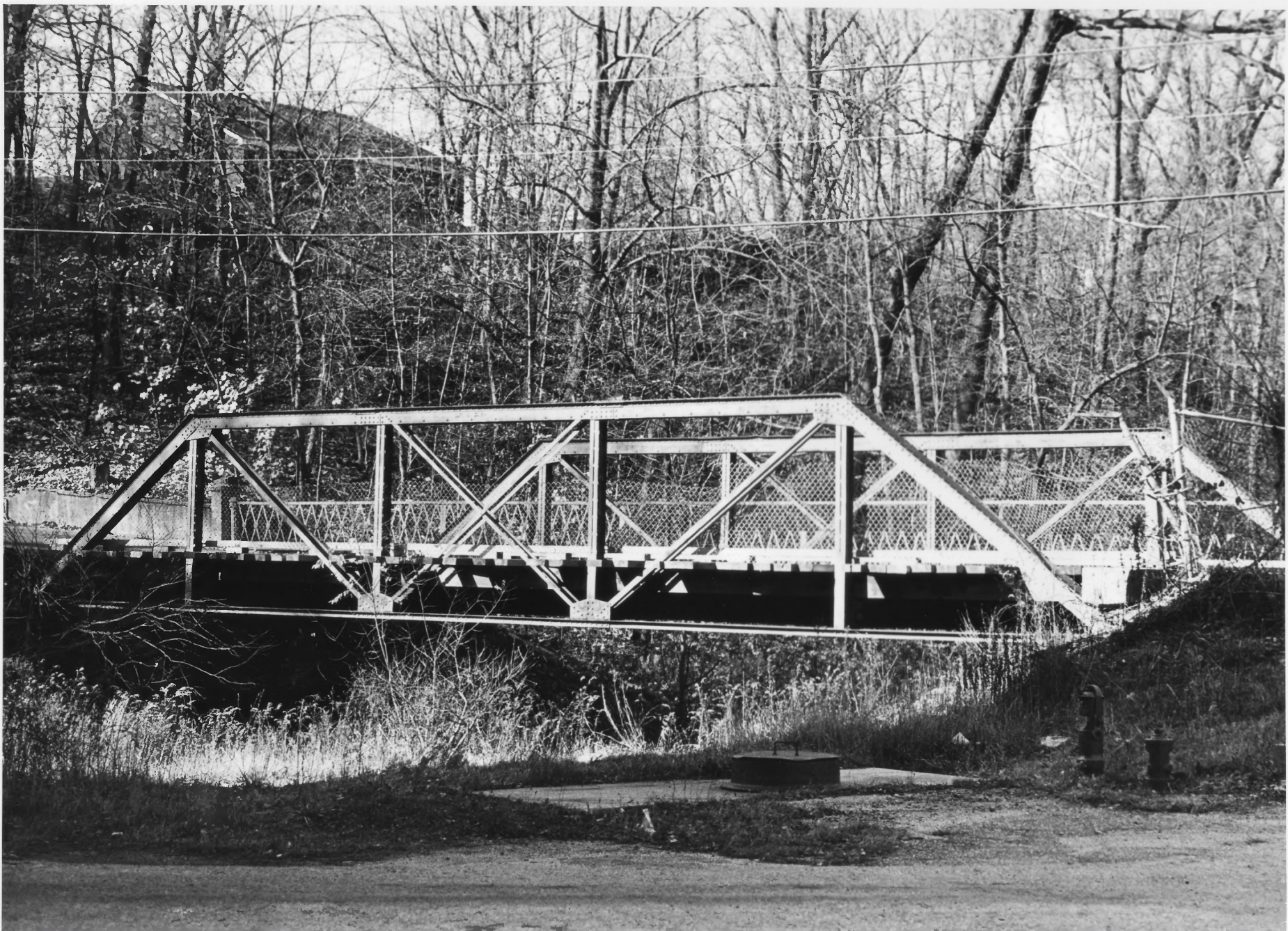


Albion Historic District
Lincoln, Rhode Island

Photographer: Kay Westhues
Date: June, 1981

View: Albion Mill Gatehouse (c. 1916)
from the south.

Photo #2



Albion Historic District
Lincoln, Rhode Island

Photographer: Susan Dynes
Date: November 1981

Negative: Rhode Island Historical Preservation
Commission

View: Albion Blackstone Canal Bridge
from the south.

Photo #3.

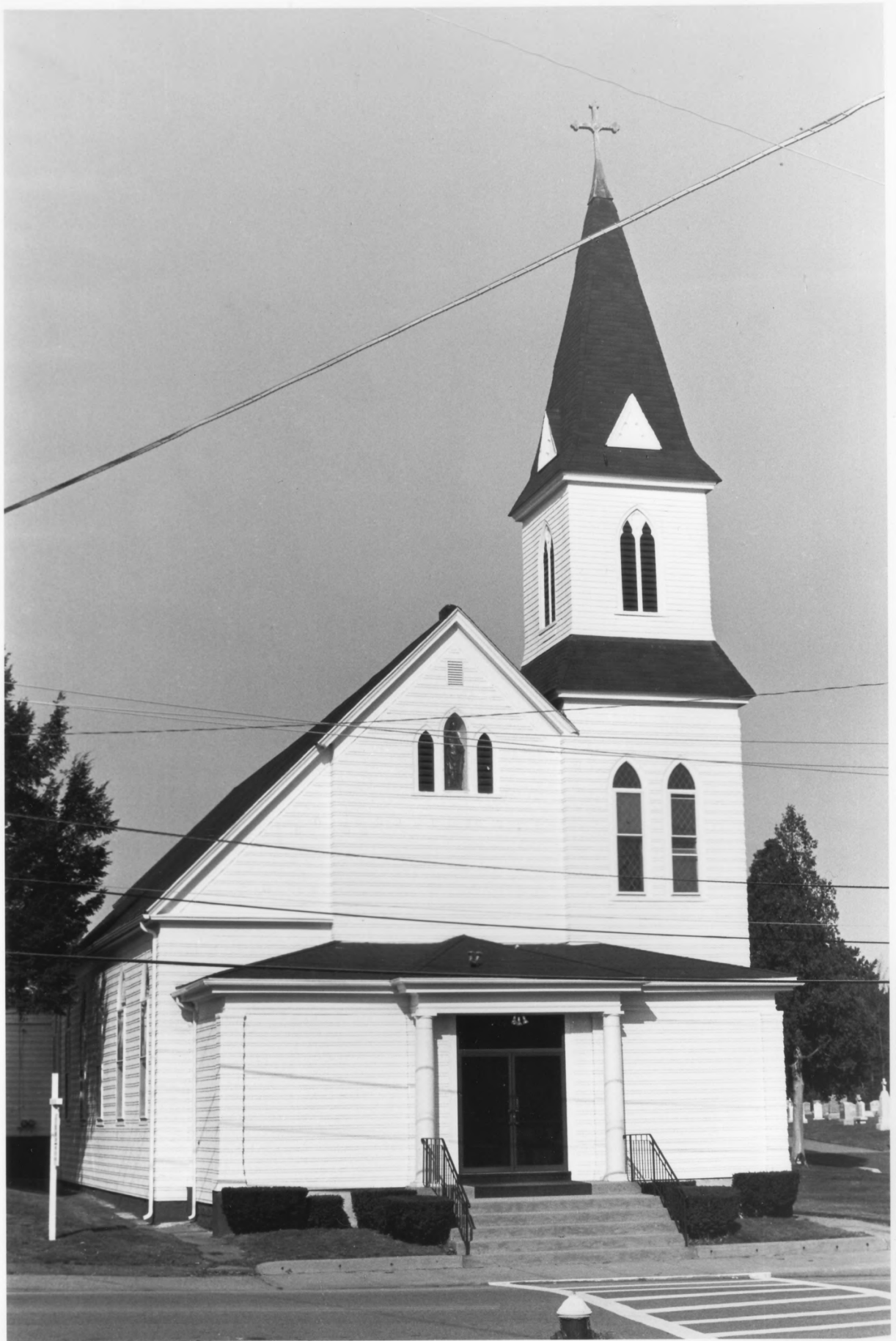


Albion Historic District
Lincoln, Rhode Island

Photographer: Susan Dynes
Date: November, 1981

View: Albion Blackstone River Bridge
from the southwest.

Photo #4



Albion Historic District
Lincoln, Rhode Island

Photographer: Susan Dynes
Date: November, 1981

Negative: Rhode Island Historical Preservation
Commission

View: Saint Ambrose Church (1895 et seq.)
191 School Street, from the south.

Photo #5



Albion Historic District
Lincoln, Rhode Island

Photographer: Susan Dynes
Date: November, 1981

View: The Long House (1840's), 41-45 Main Street,
from the southwest

Photo #6



Albion Historic District
Lincoln, Rhode Island

Photographer: Susan Dynes
Date: November, 1981

Negative: R.I. Historical Preservation Commission

View: Albion Mill Houses, (c. 1880), 67, 61 and 55
School Street, from the southwest.

Photo #7



Albion Historic District
Lincoln, Rhode Island

Photographer: Susan Dynes
Date: November, 1981

View: Albion Mill Houses, 49 School Street
(c. 1910) 41 School Street (c. 1908),
from the southwest

Photo #8



Albion Historic District
Lincoln, Rhode Island

Photographer: Susan Dynes
Date: November, 1981

Negative: R.I. Historical Preservation Commission

View: Albion Mill Houses (1949), 28, 36 and 42
Berkshire Drive, from the east.

Photo #9



Albion Historic District
Lincoln, Rhode Island

Photographer: Susan Dynes
Date: November, 1981

View: General view up School Street from the
east.

Photo #10