

UNITED STATES DEPARTMENT OF THE INTERIOR
NATIONAL PARK SERVICE

NATIONAL REGISTER OF HISTORIC PLACES
PROPERTY PHOTOGRAPH FORM

FOR NPS USE ONLY

RECEIVED JUN 10 1976

DATE ENTERED

approved
10/3/78

SEE INSTRUCTIONS IN *HOW TO COMPLETE NATIONAL REGISTER FORMS*
TYPE ALL ENTRIES ENCLOSE WITH PHOTOGRAPH

1 NAME

HISTORIC

Scotts Bluff National Monument

AND/OR COMMON

2 LOCATION

CITY, TOWN Gering

X VICINITY OF

COUNTY Scotts Bluff STATE Nebraska

3 PHOTO REFERENCE

PHOTO CREDIT

DATE OF PHOTO

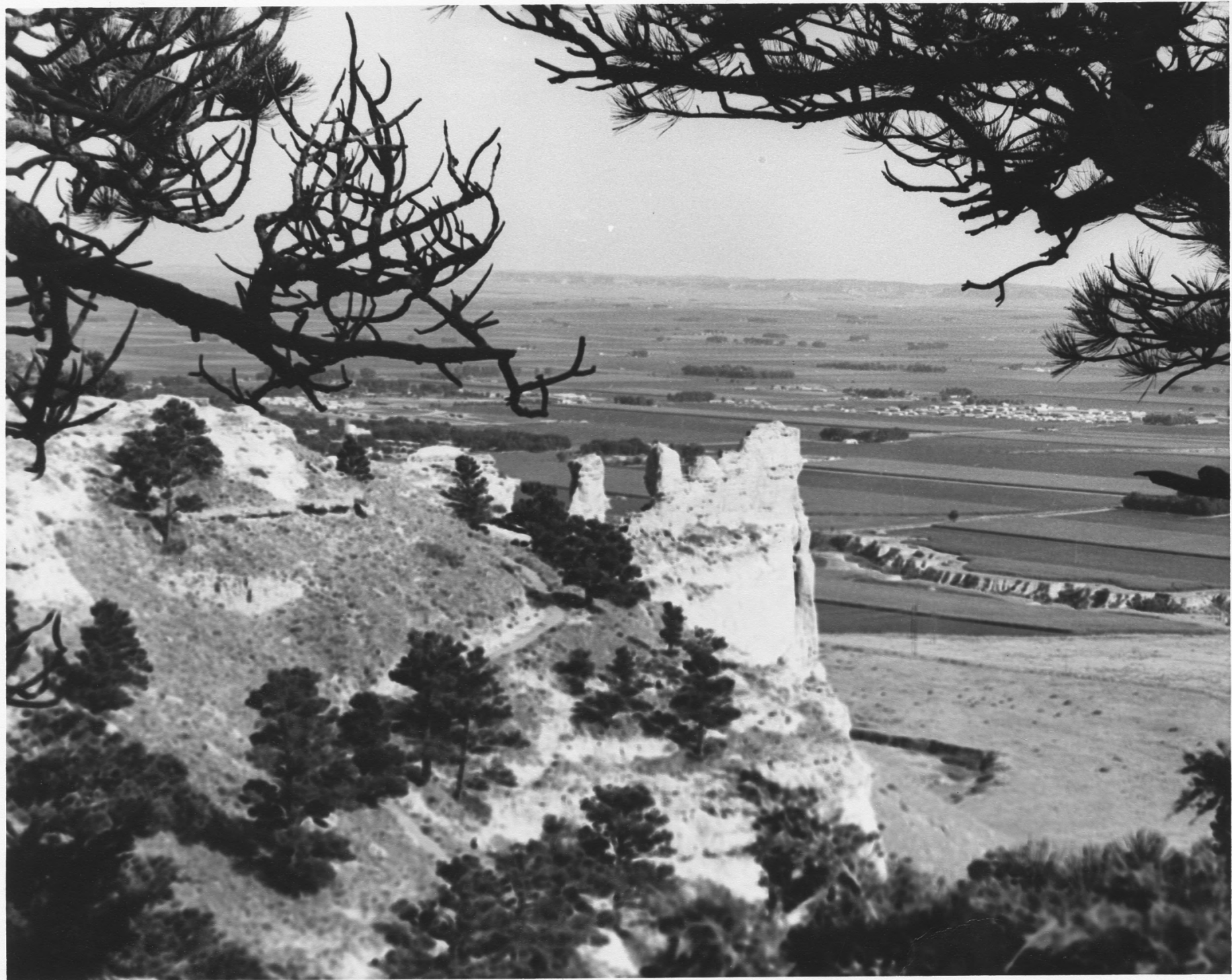
NEGATIVE FILED AT Midwest Regional Office, National Park Service

4 IDENTIFICATION

DESCRIBE VIEW, DIRECTION, ETC. IF DISTRICT, GIVE BUILDING NAME & STREET

PHOTO NO

Dome Rock from the Summit of North Bluff.



UNITED STATES DEPARTMENT OF THE INTERIOR
NATIONAL PARK SERVICE

**NATIONAL REGISTER OF HISTORIC PLACES
PROPERTY PHOTOGRAPH FORM**

FOR NPS USE ONLY

RECEIVED JUN 10 1976

DATE ENTERED

approved
10/3/78

SEE INSTRUCTIONS IN *HOW TO COMPLETE NATIONAL REGISTER FORMS*
TYPE ALL ENTRIES ENCLOSE WITH PHOTOGRAPH

1 NAME

HISTORIC

Scotts Bluff National Monument

AND/OR COMMON

2 LOCATION

CITY, TOWN Gering

X VICINITY OF

COUNTY Scotts Bluff STATE Nebraska

3 PHOTO REFERENCE

PHOTO CREDIT

DATE OF PHOTO

NEGATIVE FILED AT Midwest Regional Office, National Park Service

4 IDENTIFICATION

DESCRIBE VIEW, DIRECTION, ETC. IF DISTRICT, GIVE BUILDING NAME & STREET

PHOTO NO

View of Scotts Bluff from the Summit

