



15743

MONTGOMERY WARD COMPANY
2741 NW VAUGHN
PORTLAND, MULTNOMAH COUNTY, OREGON

HISTORIC VIEW: NORTH SIDE OF
MONTGOMERY WARD BUILDING c. 1924.

HERITAGE INVESTMENT CORPORATION
123 NW SECOND #200
PORTLAND, OREGON 97209

PHOTO 1 OF 46

PHOTO 12/84

PHOTOCOPY IS ISSUED
FOR REFERENCE USE ONLY
PERMISSION FOR EACH
REPRODUCTION MUST BE
OBTAINED FROM THE
ORGANIZATION ISSUING THE
COPY

Oregon Historical Society
1230 S W PARK AVENUE
PORTLAND, OREGON 97205

NEGATIVE NUMBER:

73225

addition? (1936)
Montgomery Ward & Co.

Banner says:

" This roadway connects with the
lower Columbia River Hwy. Was
constructed by Montgomery Ward & Co.
Will be open to traffic Nov. 12!"

FORESTRY BLDG., EXTREME R. OF PHOTO



MONTGOMERY WARD COMPANY
2741 NW VAUGHN
PORTLAND, MULTNOMAH COUNTY, OREGON

HISTORIC VIEW: GUILD'S LAKE AREA, N/D,
LOOKING EAST. OLD CHAPMAN SCHOOL AT
RIGHT CENTER OF PHOTO, ST. HELENS RD.
IN BACKGROUND.

HERITAGE INVESTMENT CORPORATION
123 NW SECOND #200
PORTLAND, OREGON 97209

PHOTO 2 OF 46

PHOTO 12/84



MONTGOMERY WARD COMPANY
2741 NW VAUGHN
PORTLAND, MULTNOMAH COUNTY, OREGON

HISTORIC VIEW: N.W. WARDWAY UNDER
CONSTRUCTION (c. 1924). GUILD'S
LAKE AREA IN BACKGROUND, LOOKING
NORTH.

HERITAGE INVESTMENT CORPORATION
123 NW SECOND #200
PORTLAND, OREGON 97209

PHOTO 3 OF 46_

PHOTO 12/84



30186
Brookings Aerial Service
Portland, Oregon

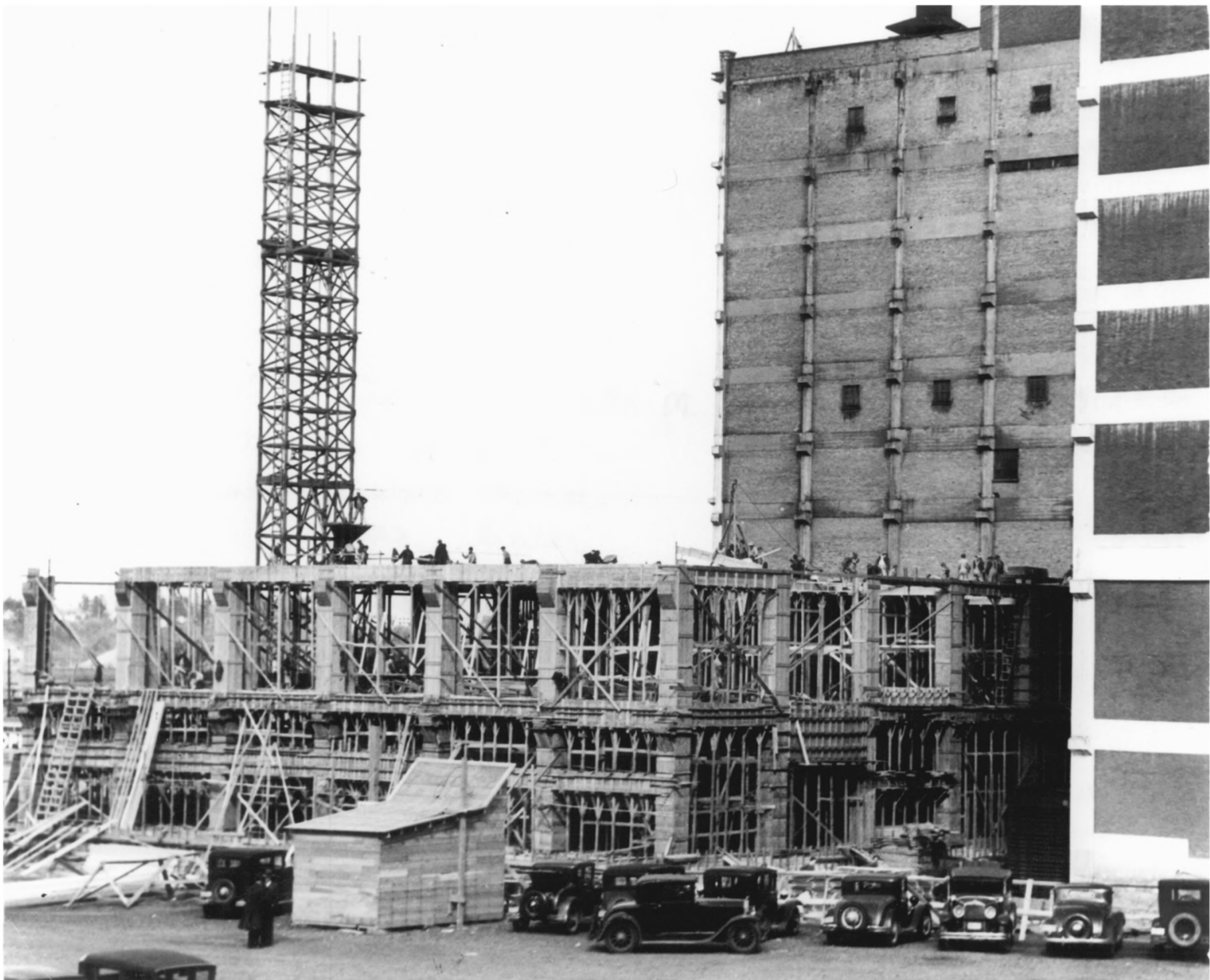
MONTGOMERY WARD COMPANY
2741 NW VAUGHN
PORTLAND, MULTNOMAH COUNTY, OREGON

HISTORIC VIEW: GUILD'S LAKE AREA,
JUNE, 1930, LOOKING NORTH. MONTGOMERY
WARD BUILDING AT RIGHT CENTER OF PHOTO.

HERITAGE INVESTMENT CORPORATION
123 NW SECOND #200
PORTLAND, OREGON 97209

PHOTO 4 OF 46

PHOTO 12/84



MONTGOMERY WARD COMPANY
2741 NW VAUGHN
PORTLAND, MULTNOMAH COUNTY, OREGON

5

HISTORIC VIEW: NEW MONTGOMERY WARD
BUILDING ADDITION UNDER CONSTRUCTION,
3/29/1936.

HERITAGE INVESTMENT CORPORATION
123 NW SECOND #200
PORTLAND, OREGON 97209

PHOTO 5 OF 46

PHOTO 12/84

PERMISSION FOR EACH
REPRODUCTION MUST BE
REQUESTED.

Oregon Historical Society
1230 SW PARK AVENUE
PORTLAND, OREGON 97205

NEGATIVE NUMBER:

73477

#1734

Montgomery Ward & Co.
\$75,000 project at
mail order and
retail center

Oregon Journal photo
March 29, 1936

photo caption:

"Building activity is at high gear on this \$750,000
project at MW & Co. mail order & retail center at
NW 27th Ave. & Vaughn St. as 150 men
push the 9-story addition into the air."



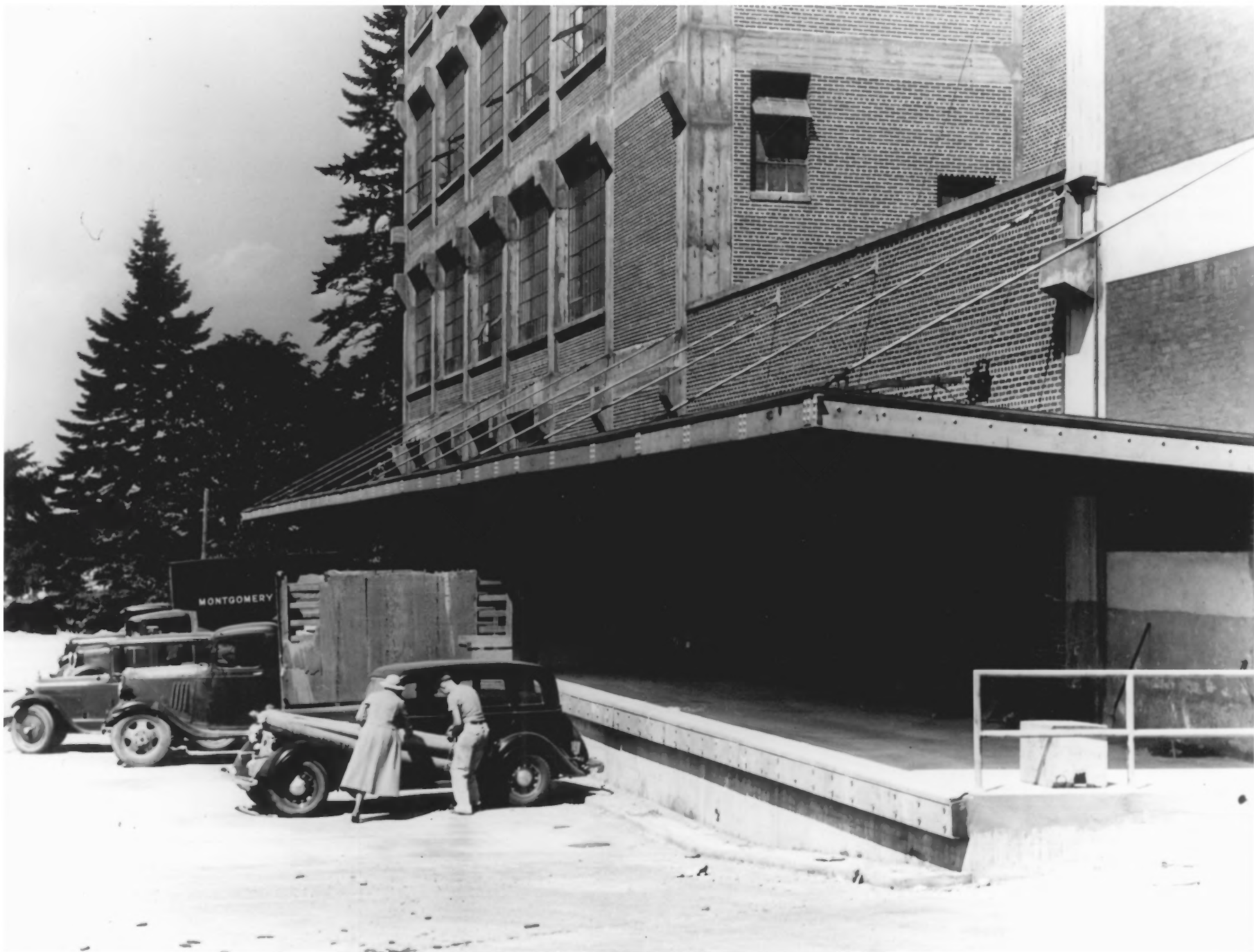
MONTGOMERY WARD COMPANY
2741 NW VAUGHN
PORTLAND, MULTNOMAH COUNTY, OREGON

HISTORIC VIEW: MONTGOMERY WARD
BUILDING--NEW CUSTOMER PARKING.
8/28/1936.

HERITAGE INVESTMENT CORPORATION
123 NW SECOND #200
PORTLAND, OREGON 97209

PHOTO 6 OF 46

PHOTO 12/84



MONTGOMERY WARD COMPANY
2741 NW VAUGHN
PORTLAND, MULTNOMAH COUNTY, OREGON

HISTORIC VIEW: MONTGOMERY WARD
BUILDING, LOADING PLATFORM ALONGSIDE
NEW WING. 8/26/1936.

HERITAGE INVESTMENT CORPORATION
123 NW SECOND #200
PORTLAND, OREGON 97209

PHOTO 7 OF 46

PHOTO 12/84



MONTGOMERY WARD COMPANY
2741 NW VAUGHN
PORTLAND, MULTNOMAH COUNTY, OREGON

DESCRIPTION: GENERAL VIEW LOOKING
NORTHWEST.

HERITAGE INVESTMENT CORPORATION
123 NW SECOND #200
PORTLAND, OREGON 97209

PHOTO 8 OF 46

PHOTO 12/84



MONTGOMERY WARD COMPANY

2741 NW VAUGHN

PORTLAND, MULTNOMAH COUNTY, OREGON

DESCRIPTION: GENERAL VIEW LOOKING
NORTHWEST.

HERITAGE INVESTMENT CORPORATION

123 NW SECOND #200

PORTLAND, OREGON 97209

PHOTO 9 OF 46

PHOTO 12/84

A black and white photograph of a courtyard. In the foreground, a concrete wall curves across the frame with the words "FORESTRY COMMONS" engraved on it. To the left is a building with horizontal siding. In the center background is a large, multi-story building with a grid of windows and a tall, thin tree in front of it. To the right is a covered walkway with a car parked underneath. The scene is brightly lit, casting shadows on the ground.

FORESTRY
COMMONS

MONTGOMERY WARD COMPANY

2741 NW VAUGHN

PORTLAND, MULTNOMAH COUNTY, OREGON

DESCRIPTION: GENERAL VIEW LOOKING
NORTH.

HERITAGE INVESTMENT CORPORATION

123 NW SECOND #200

PORTLAND, OREGON 97209

PHOTO 10 OF 46

PHOTO 12/84



MONTGOMERY WARD COMPANY
2741 NW VAUGHN
PORTLAND, MULTNOMAH COUNTY, OREGON

DESCRIPTION: SOUTH ELEVATION

HERITAGE INVESTMENT CORPORATION
123 NW SECOND #200
PORTLAND, OREGON 97209

PHOTO 11 OF 46

PHOTO 12/84



MONTGOMERY WARD COMPANY
2741 NW VAUGHN
PORTLAND, MULTNOMAH COUNTY, OREGON

DESCRIPTION: LOOKING NORTHEAST

HERITAGE INVESTMENT CORPORATION
123 NW SECOND #200
PORTLAND, OREGON 97209

PHOTO 12 OF 46

PHOTO 12/84



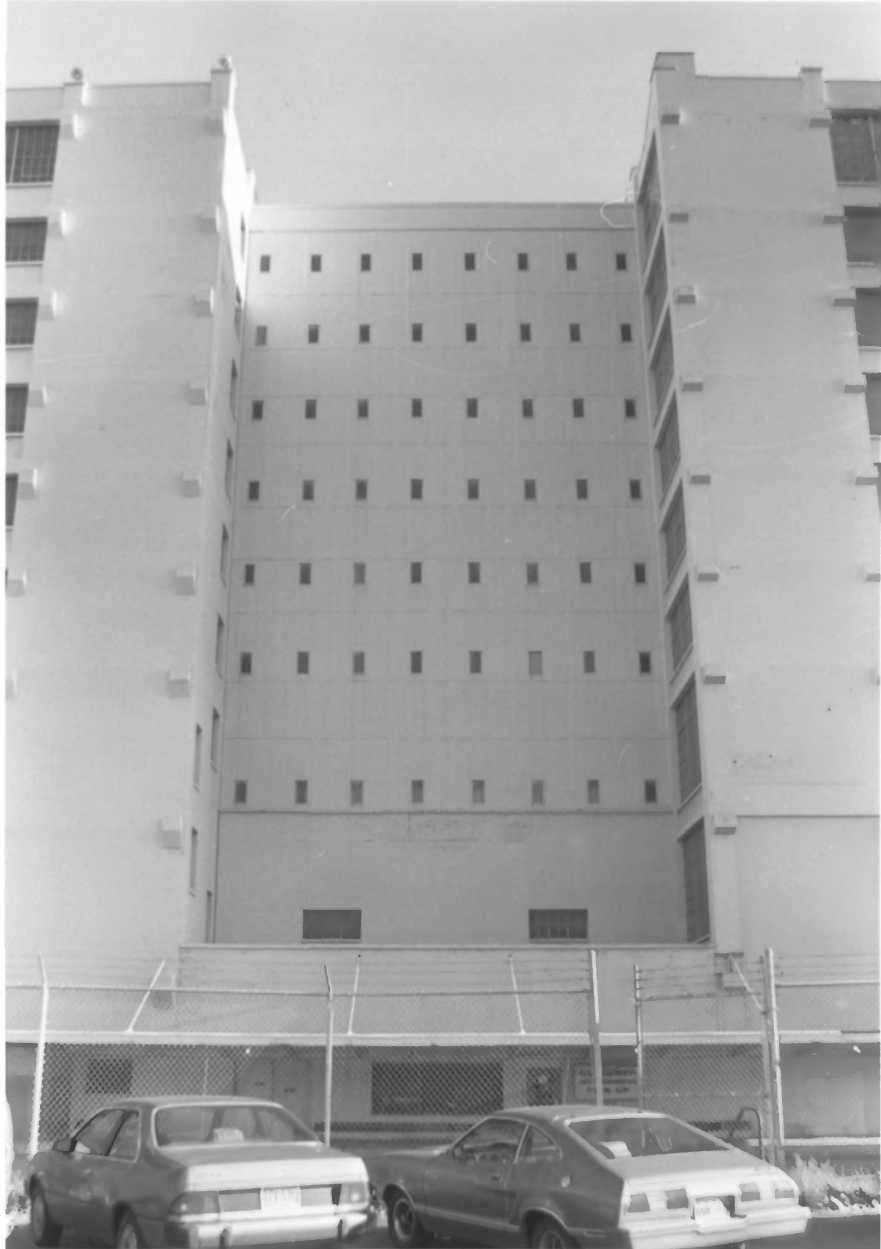
MONTGOMERY WARD COMPANY
2741 NW VAUGHN
PORTLAND, MULTNOMAH COUNTY, OREGON

DESCRIPTION: WEST ELEVATION

HERITAGE INVESTMENT CORPORATION
123 NW SECOND #200
PORTLAND, OREGON 97209

PHOTO 13 OF 46

PHOTO 12/84



MONTGOMERY WARD COMPANY
2741 NW VAUGHN
PORTLAND, MULTNOMAH COUNTY, OREGON

DESCRIPTION: CLOSE UP, CENTER BAY,
WEST ELEVATION

HERITAGE INVESTMENT CORPORATION
123 NW SECOND #200
PORTLAND, OREGON 97209

PHOTO 14 OF 46

PHOTO 12/84



MONTGOMERY WARD COMPANY
2741 NW VAUGHN
PORTLAND, MULTNOMAH COUNTY, OREGON

DESCRIPTION: LOADING DOCK, WEST
ELEVATION LOOKING NORTHEAST

HERITAGE INVESTMENT CORPORATION
123 NW SECOND #200
PORTLAND, OREGON 97209

PHOTO 15 OF 46

PHOTO 12/84



MONTGOMERY WARD COMPANY
2741 NW VAUGHN
PORTLAND, MULTNOMAH COUNTY, OREGON

DESCRIPTION: LOOKING SOUTHEAST,
WEST ELEVATION

HERITAGE INVESTMENT CORPORATION
123 NW SECOND #200
PORTLAND, OREGON 97209

PHOTO 16 OF 46

PHOTO 12/84



MONTGOMERY WARD COMPANY
2741 NW VAUGHN
PORTLAND, MULTNOMAH COUNTY, OREGON

DESCRIPTION: LOOKING SOUTHEAST,
WEST ELEVATION

HERITAGE INVESTMENT CORPORATION
123 NW SECOND #200
PORTLAND, OREGON 97209

PHOTO 17 OF 46

PHOTO 12/84



MONTGOMERY WARD COMPANY
2741 NW VAUGHN
PORTLAND, MULTNOMAH COUNTY, OREGON

DESCRIPTION: LOOKING SOUTHWEST AT
EAST AND NORTH ELEVATIONS

HERITAGE INVESTMENT CORPORATION
123 NW SECOND #200
PORTLAND, OREGON 97209

PHOTO 18 OF 46

PHOTO 12/84



MONTGOMERY WARD COMPANY
2741 NW VAUGHN
PORTLAND, MULTNOMAH COUNTY, OREGON

DESCRIPTION: LOADING DOCK, NORTH
ELEVATION

HERITAGE INVESTMENT CORPORATION
123 NW SECOND #200
PORTLAND, OREGON 97209

PHOTO 19 OF 46

PHOTO 12/84

MONTGOMERY WARD

FOR SALE

STOP



MONTGOMERY WARD COMPANY
2741 NW VAUGHN
PORTLAND, MULTNOMAH COUNTY, OREGON

DESCRIPTION: LOOKING WEST AT EAST
ELEVATION

HERITAGE INVESTMENT CORPORATION
123 NW SECOND #200
PORTLAND, OREGON 97209

PHOTO 20 OF 46

PHOTO 12/84



MONTGOMERY WARD COMPANY

2741 NW VAUGHN

PORTLAND, MULTNOMAH COUNTY, OREGON

DESCRIPTION: EAST ELEVATION

HERITAGE INVESTMENT CORPORATION

123 NW SECOND #200

PORTLAND, OREGON 97209

PHOTO 21 OF 46

PHOTO 12/84



MONTGOMERY WARD COMPANY
2741 NW VAUGHN
PORTLAND, MULTNOMAH COUNTY, OREGON

DESCRIPTION: INTERIOR TRAIN STATION
LOOKING WEST

HERITAGE INVESTMENT CORPORATION
123 NW SECOND #200
PORTLAND, OREGON 97209

PHOTO 22 OF 46

PHOTO 12/84



MONTGOMERY WARD COMPANY

2741 NW VAUGHN

PORTLAND, MULTNOMAH COUNTY, OREGON

DESCRIPTION: INTERIOR TRAIN STATION
LOOKING EAST

HERITAGE INVESTMENT CORPORATION

123 NW SECOND #200

PORTLAND, OREGON 97209

PHOTO 23 OF 46

PHOTO 12/84



MONTGOMERY WARD COMPANY
2741 NW VAUGHN
PORTLAND, MULTNOMAH COUNTY, OREGON

DESCRIPTION: EAST ELEVATION DETAIL

HERITAGE INVESTMENT CORPORATION
123 NW SECOND #200
PORTLAND, OREGON 97209

PHOTO 24 OF 46

PHOTO 12/84



MONTGOMERY WARD COMPANY
2741 NW VAUGHN
PORTLAND, MULTNOMAH COUNTY, OREGON

DESCRIPTION: EAST ELEVATION DETAIL

HERITAGE INVESTMENT CORPORATION
123 NW SECOND #200
PORTLAND, OREGON 97209

PHOTO 25 OF 46

PHOTO 12/84

NW VA



MONTGOMERY WARD COMPANY

2741 NW VAUGHN

PORTLAND, MULTNOMAH COUNTY, OREGON

DESCRIPTION: LOOKING NORTHWEST AT
RAMP

HERITAGE INVESTMENT CORPORATION

123 NW SECOND #200

PORTLAND, OREGON 97209

PHOTO 26 OF 46

PHOTO 12/84



MONTGOMERY WARD COMPANY
2741 NW VAUGHN
PORTLAND, MULTNOMAH COUNTY, OREGON

DESCRIPTION: LOOKING NORTHWEST AT
RAMP

HERITAGE INVESTMENT CORPORATION
123 NW SECOND #200
PORTLAND, OREGON 97209

PHOTO 27 OF 46

PHOTO 12/84



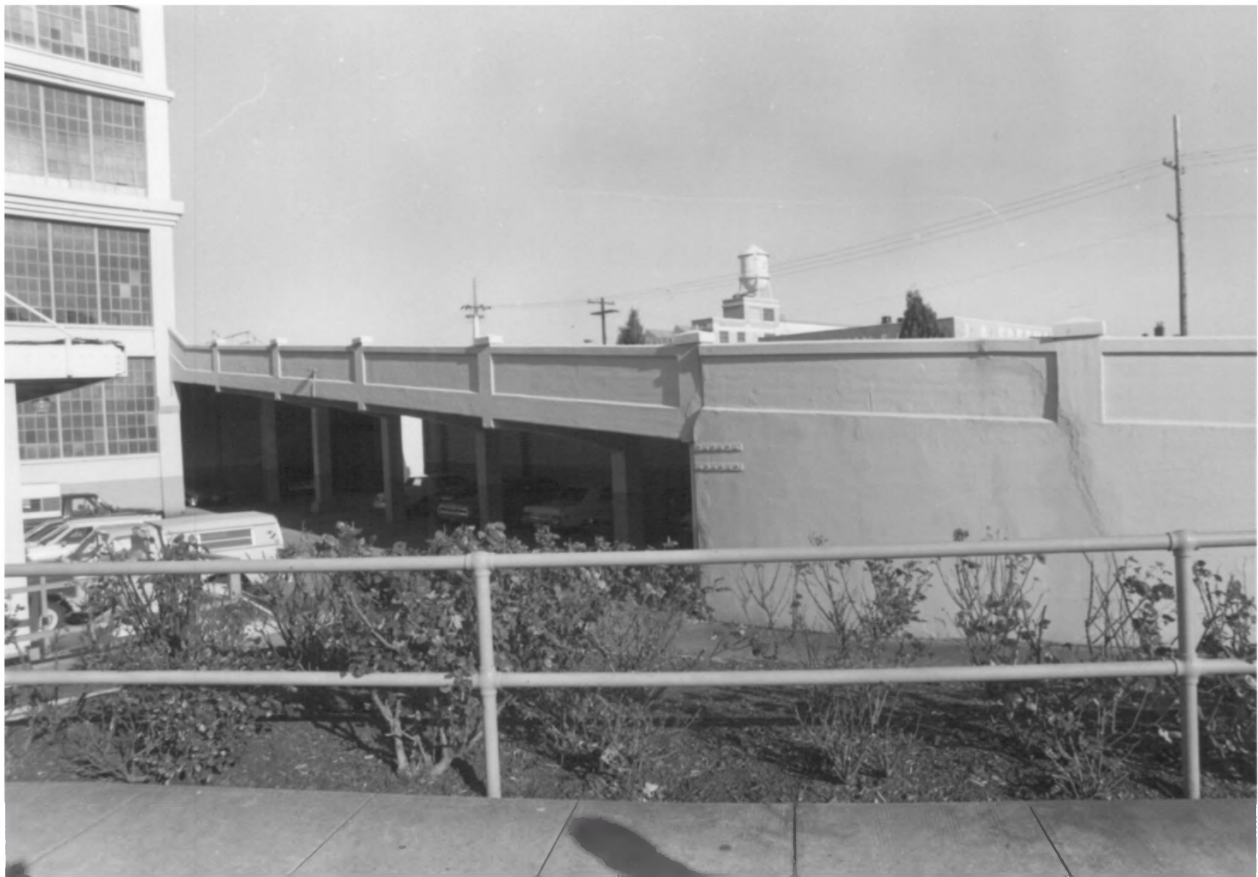
MONTGOMERY WARD COMPANY
2741 NW VAUGHN
PORTLAND, MULTNOMAH COUNTY, OREGON

DESCRIPTION: LOOKING NORTHEAST AT
REAR OF RAMP

HERITAGE INVESTMENT CORPORATION
123 NW SECOND #200
PORTLAND, OREGON 97209

PHOTO 28 OF 46

PHOTO 12/84



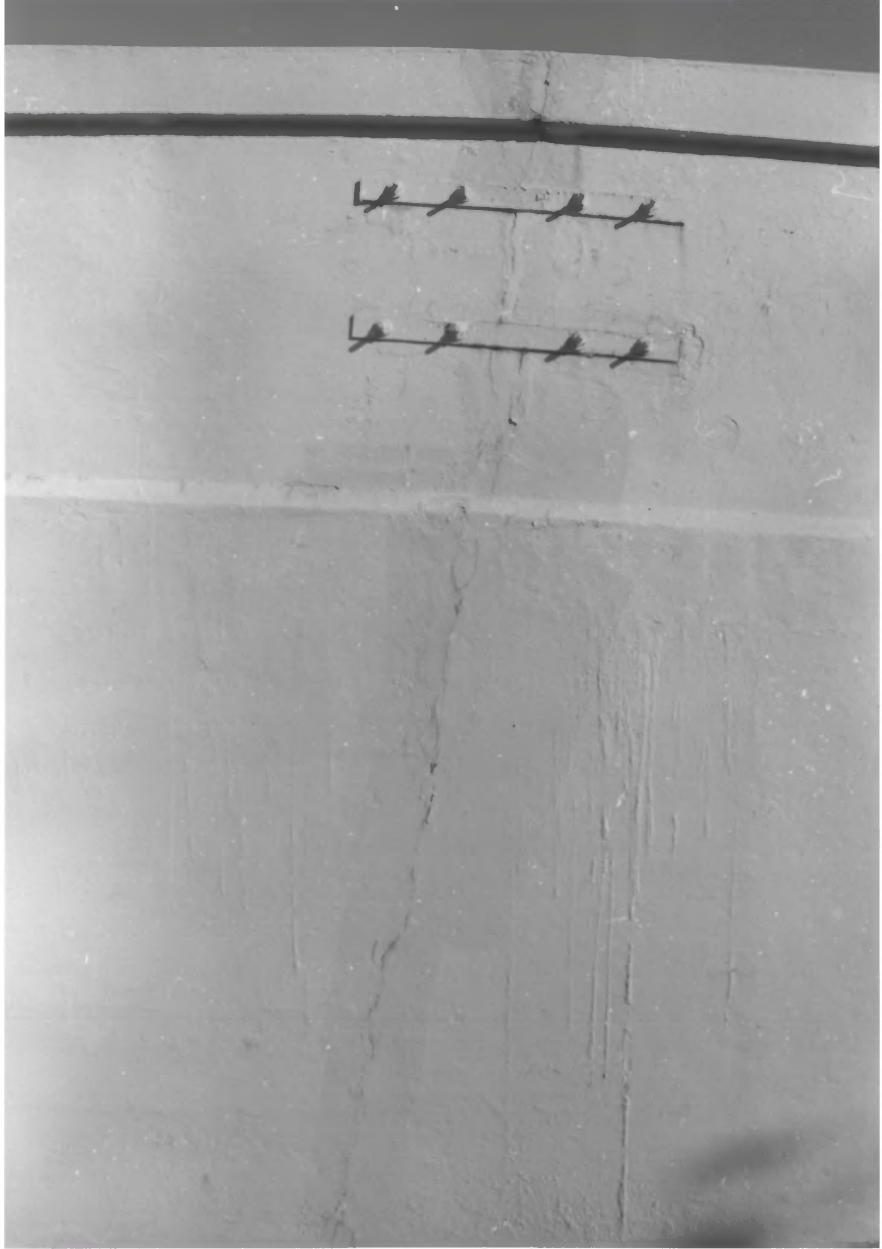
MONTGOMERY WARD COMPANY
2741 NW VAUGHN
PORTLAND, MULTNOMAH COUNTY, OREGON

DESCRIPTION: LOOKING NORTHEAST AT
REAR OF RAMP

HERITAGE INVESTMENT CORPORATION
123 NW SECOND #200
PORTLAND, OREGON 97209

PHOTO 29 OF 46

PHOTO 12/84



MONTGOMERY WARD COMPANY
2741 NW VAUGHN
PORTLAND, MULTNOMAH COUNTY, OREGON

DESCRIPTION: RAMP STRUCTURAL DAMAGE

HERITAGE INVESTMENT CORPORATION
123 NW SECOND #200
PORTLAND, OREGON 97209

PHOTO 30 OF 46

PHOTO 12/84



MONTGOMERY WARD COMPANY
2741 NW VAUGHN
PORTLAND, MULTNOMAH COUNTY, OREGON

DESCRIPTION: EXTERIOR DETAIL

HERITAGE INVESTMENT CORPORATION
123 NW SECOND #200
PORTLAND, OREGON 97209

PHOTO 31 OF 46

PHOTO 12/84



MONTGOMERY WARD COMPANY
2741 NW VAUGHN
PORTLAND, MULTNOMAH COUNTY, OREGON

DESCRIPTION: EXTERIOR DETAIL

HERITAGE INVESTMENT CORPORATION
123 NW SECOND #200
PORTLAND, OREGON 97209

PHOTO 32 OF 46

PHOTO 12/84

Catalog Store / Bargain Center

R

Y

W



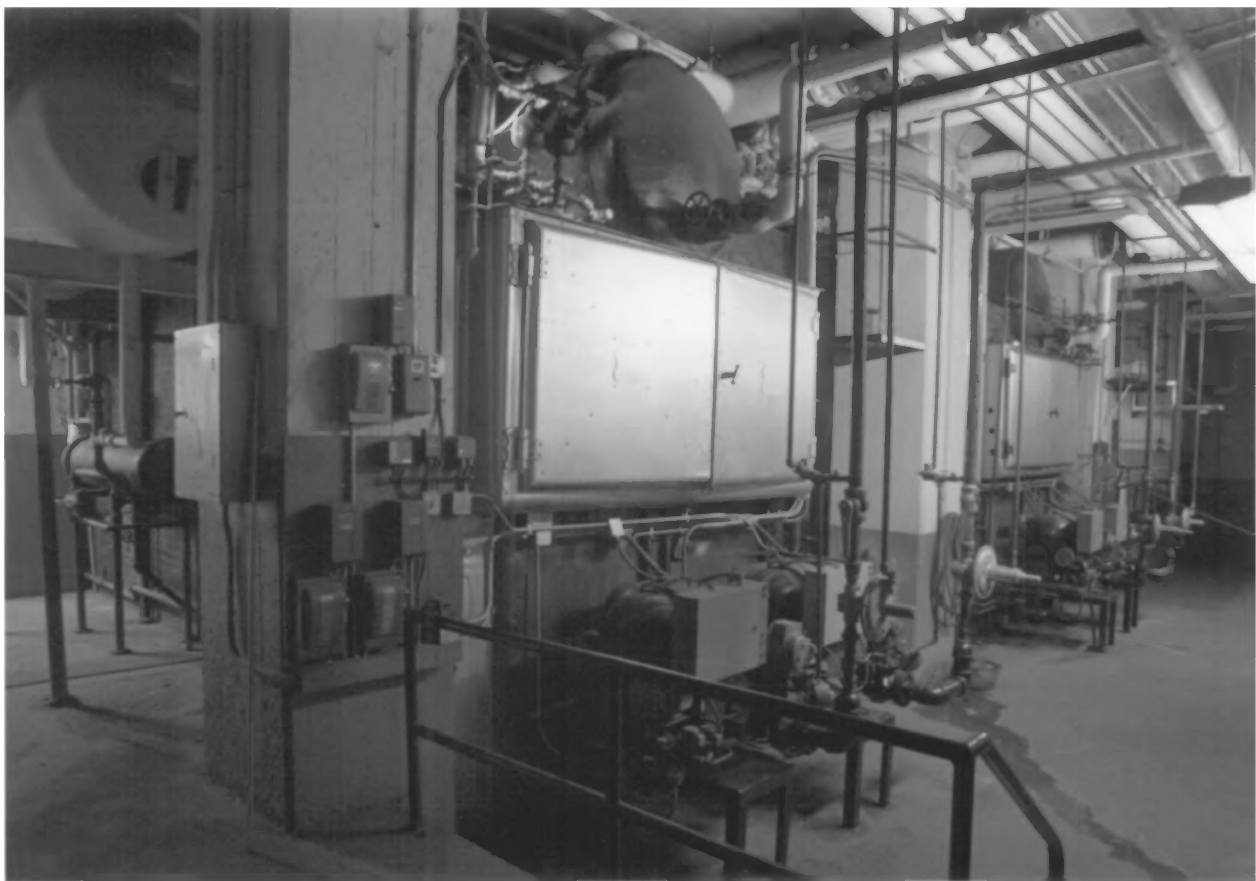
MONTGOMERY WARD COMPANY
2741 NW VAUGHN
PORTLAND, MULTNOMAH COUNTY, OREGON

DESCRIPTION: SOUTH ELEVATION ENTRANCE

HERITAGE INVESTMENT CORPORATION
123 NW SECOND #200
PORTLAND, OREGON 97209

PHOTO 33 OF 46

PHOTO 12/84



MONTGOMERY WARD COMPANY

2741 NW VAUGHN

PORTLAND, MULTNOMAH COUNTY, OREGON

DESCRIPTION: INTERIOR BASEMENT
BOILER ROOM

HERITAGE INVESTMENT CORPORATION

123 NW SECOND #200

PORTLAND, OREGON 97209

PHOTO 34 OF 46

PHOTO 12/84



MONTGOMERY WARD COMPANY
2741 NW VAUGHN
PORTLAND, MULTNOMAH COUNTY, OREGON

DESCRIPTION: INTERIOR FIRST FLOOR
AND MEZZANINE RETAIL SPACE

HERITAGE INVESTMENT CORPORATION
123 NW SECOND #200
PORTLAND, OREGON 97209

PHOTO 35 OF 46

PHOTO 12/84



MONTGOMERY WARD COMPANY

2741 NW VAUGHN

PORTLAND, MULTNOMAH COUNTY, OREGON

DESCRIPTION: MEZZANINE STAIRS

HERITAGE INVESTMENT CORPORATION

123 NW SECOND #200

PORTLAND, OREGON 97209

PHOTO 36 OF 46

PHOTO 12/84



MONTGOMERY WARD COMPANY
2741 NW VAUGHN
PORTLAND, MULTNOMAH COUNTY, OREGON

DESCRIPTION: THIRD FLOOR GENERAL VIEW
(TYPICAL UPPER FLOOR)

HERITAGE INVESTMENT CORPORATION
123 NW SECOND #200
PORTLAND, OREGON 97209

PHOTO 37 OF 46

PHOTO 12/84



MONTGOMERY WARD COMPANY

2741 NW VAUGHN

PORTLAND, MULTNOMAH COUNTY, OREGON

DESCRIPTION: NINTH FLOOR STORAGE RACKS

HERITAGE INVESTMENT CORPORATION

123 NW SECOND #200

PORTLAND, OREGON 97209

PHOTO 38 OF 46

PHOTO 12/84



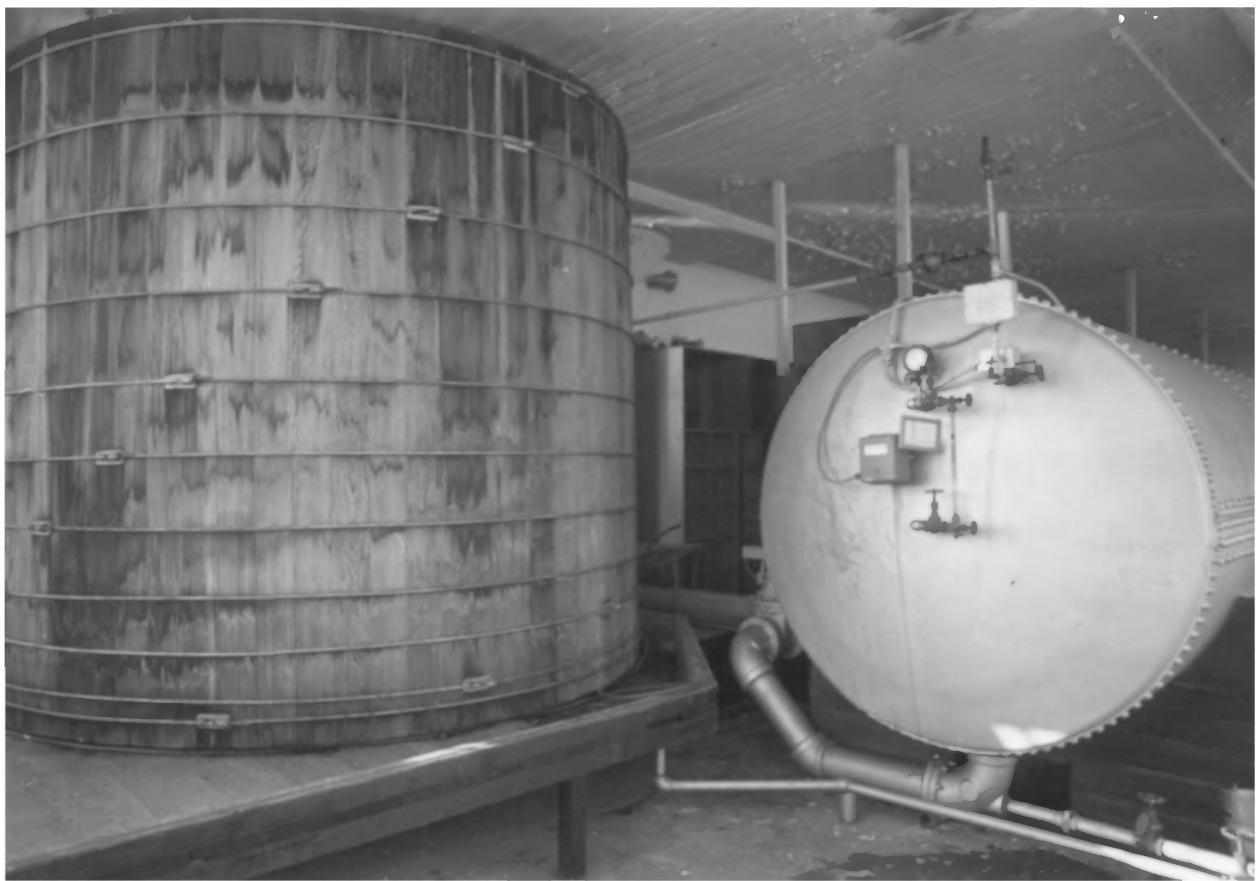
MONTGOMERY WARD COMPANY
2741 NW VAUGHN
PORTLAND, MULTNOMAH COUNTY, OREGON

DESCRIPTION: ELEVATOR PENTHOUSE

HERITAGE INVESTMENT CORPORATION
123 NW SECOND #200
PORTLAND, OREGON 97209

PHOTO 39 OF 46

PHOTO 12/84



MONTGOMERY WARD COMPANY
2741 NW VAUGHN
PORTLAND, MULTNOMAH COUNTY, OREGON

DESCRIPTION: WATER SUPPLY, PENTHOUSE

HERITAGE INVESTMENT CORPORATION
123 NW SECOND #200
PORTLAND, OREGON 97209

PHOTO 40 OF 46

PHOTO 12/84



MONTGOMERY WARD COMPANY
2741 NW VAUGHN
PORTLAND, MULTNOMAH COUNTY, OREGON

DESCRIPTION: INTERIOR BRIDGE ACROSS
ATRIUM

HERITAGE INVESTMENT CORPORATION
123 NW SECOND #200
PORTLAND, OREGON 97209

PHOTO 41 OF 46

PHOTO 12/84



MONTGOMERY WARD COMPANY
2741 NW VAUGHN
PORTLAND, MULTNOMAH COUNTY, OREGON

DESCRIPTION: LIGHT WELL LOOKING EAST

HERITAGE INVESTMENT CORPORATION
123 NW SECOND #200
PORTLAND, OREGON 97209

PHOTO 42 OF 46

PHOTO 12/84

MIDWINTER ENGINEERING



MONTGOMERY WARD COMPANY
2741 NW VAUGHN
PORTLAND, MULTNOMAH COUNTY, OREGON

DESCRIPTION: LIGHT WELL LOOKING EAST

HERITAGE INVESTMENT CORPORATION
123 NW SECOND #200
PORTLAND, OREGON 97209

PHOTO 43 OF 46

PHOTO 12/84

4

EXIT



MONTGOMERY WARD COMPANY
2741 NW VAUGHN
PORTLAND, MULTNOMAH COUNTY, OREGON

DESCRIPTION: FREIGHT ELEVATOR

HERITAGE INVESTMENT CORPORATION
123 NW SECOND #200
PORTLAND, OREGON 97209

PHOTO 44 OF 46

PHOTO 12/84



MONTGOMERY WARD COMPANY
2741 NW VAUGHN
PORTLAND, MULTNOMAH COUNTY, OREGON

DESCRIPTION: COLUMN DETAIL, FIRST
FLOOR

HERITAGE INVESTMENT CORPORATION
123 NW SECOND #200
PORTLAND, OREGON 97209

PHOTO 45 OF 46

PHOTO 12/84



MONTGOMERY WARD COMPANY
2741 NW VAUGHN
PORTLAND, MULTNOMAH COUNTY, OREGON

DESCRIPTION: STRUCTURAL REPAIR

HERITAGE INVESTMENT CORPORATION
123 NW SECOND #200
PORTLAND, OREGON 97209

PHOTO 46 OF 46

PHOTO 12/84