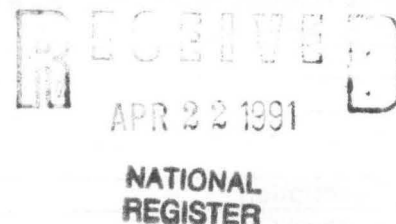


United States Department of the Interior
National Park ServiceNational Register of Historic Places
Registration Form

This form is for use in nominating or requesting determinations of eligibility for individual properties or districts. See instructions in *Guidelines for Completing National Register Forms* (National Register Bulletin 16). Complete each item by marking "x" in the appropriate box or by entering the requested information. If an item does not apply to the property being documented, enter "N/A" for "not applicable." For functions, styles, materials, and areas of significance, enter only the categories and subcategories listed in the instructions. For additional space use continuation sheets (Form 10-900a). Type all entries.

1. Name of Property

historic name Crystal River Tourist Campother names/site number Cave City Courts

2. Location

street & number State Highway 167☐ not for publication N/Acity, town Cave City☐ vicinity N/Astate Arkansas code AR county Sharpcode AR 135 zip code 72521

3. Classification

Ownership of Property

- ☒ private
☐ public-local
☐ public-State
☐ public-Federal

Category of Property

- ☐ building(s)
☒ district
☐ site
☐ structure
☐ object

Number of Resources within Property

| Contributing | Noncontributing |
|---------------|--------------------------|
| <u>8</u> | <u>2</u> buildings |
| <u> </u> | <u> </u> sites |
| <u> </u> | <u> </u> structures |
| <u> </u> | <u> </u> objects |
| <u>8</u> | <u>2</u> Total |

Name of related multiple property listing:

N/ANumber of contributing resources previously
listed in the National Register N/A

4. State/Federal Agency Certification

As the designated authority under the National Historic Preservation Act of 1966, as amended, I hereby certify that this
☒ nomination ☐ request for determination of eligibility meets the documentation standards for registering properties in the
National Register of Historic Places and meets the procedural and professional requirements set forth in 36 CFR Part 60.
In my opinion, the property ☒ meets ☐ does not meet the National Register criteria. ☐ See continuation sheet.

Signature of certifying official

Arkansas Historic Preservation Program

State or Federal agency and bureau

Date

4-18-91In my opinion, the property ☐ meets ☐ does not meet the National Register criteria. ☐ See continuation sheet.

Signature of commenting or other official

Date

State or Federal agency and bureau

5. National Park Service Certification

I, hereby, certify that this property is:

- ☒ entered in the National Register.
☐ See continuation sheet.
☐ determined eligible for the National
Register. ☐ See continuation sheet.
☐ determined not eligible for the
National Register.
☐ removed from the National Register.
☐ other, (explain): _____

Signature of the Keeper

Date of Action

6. Function or Use

Historic Functions (enter categories from instructions)

Domestic/Motel

Current Functions (enter categories from instructions)

Domestic/Motel**7. Description**

Architectural Classification

(enter categories from instructions)

Other: Ozark Fieldstone

Materials (enter categories from instructions)

foundation Concretewalls Stoneroof Asphalt

other _____

Describe present and historic physical appearance.

8. Statement of Significance

Certifying official has considered the significance of this property in relation to other properties:

☐ nationally ☒ statewide ☐ locally

Applicable National Register Criteria ☐ A ☐ B ☒ C ☐ D

Criteria Considerations (Exceptions) ☐ A ☐ B ☐ C ☐ D ☐ E ☐ F ☐ G

Areas of Significance (enter categories from instructions)

Architecture

Period of Significance

1934

Significant Dates

N/A

Cultural Affiliation

N/A

Significant Person

N/A

Architect/Builder

Matlock, Prince

State significance of property, and justify criteria, criteria considerations, and areas and periods of significance noted above.

☒ See continuation sheet

9. Major Bibliographical References

Previous documentation on file (NPS):

- ☐ preliminary determination of individual listing (36 CFR 67) has been requested
- ☐ previously listed in the National Register
- ☐ previously determined eligible by the National Register
- ☐ designated a National Historic Landmark
- ☐ recorded by Historic American Buildings Survey # _____
- ☐ recorded by Historic American Engineering Record # _____

☒ See continuation sheet

Primary location of additional data:

- ☐ State historic preservation office
- ☐ Other State agency
- ☐ Federal agency
- ☐ Local government
- ☐ University
- ☐ Other

Specify repository: _____

10. Geographical Data

Acreage of property Approximately 2.2

UTM References

A

| | |
|---|---|
| 1 | 5 |
|---|---|

| | | | | | |
|---|---|---|---|---|---|
| 6 | 3 | 0 | 9 | 0 | 5 |
|---|---|---|---|---|---|

| | | | | | | |
|---|---|---|---|---|---|---|
| 3 | 9 | 7 | 8 | 3 | 8 | 0 |
|---|---|---|---|---|---|---|

Zone Easting Northing

B

| | |
|---|---|
| 1 | 5 |
|---|---|

| | | | | | |
|---|---|---|---|---|---|
| 6 | 3 | 1 | 0 | 6 | 0 |
|---|---|---|---|---|---|

| | | | | | | |
|---|---|---|---|---|---|---|
| 3 | 9 | 7 | 8 | 3 | 9 | 0 |
|---|---|---|---|---|---|---|

Zone Easting Northing

D

| | |
|---|---|
| 1 | 5 |
|---|---|

| | | | | | |
|---|---|---|---|---|---|
| 6 | 3 | 0 | 8 | 9 | 0 |
|---|---|---|---|---|---|

| | | | | | | |
|---|---|---|---|---|---|---|
| 3 | 9 | 7 | 8 | 4 | 2 | 0 |
|---|---|---|---|---|---|---|

☐ See continuation sheet

Verbal Boundary Description

☒ See continuation sheet

Boundary Justification

This boundary includes all the property historically associated with this resource.

☐ See continuation sheet

11. Form Prepared By

name/title Ken Story, Architectural Historian

organization Arkansas Historic Preservation Program date 4/18/91

street & number 225 East Markham, Suite 300 telephone (501) 324-9346

city or town Little Rock state Arkansas zip code 72201

United States Department of the Interior
National Park ServiceNational Register of Historic Places
Continuation SheetSection number 7 Page 1

Summary

The Crystal River Tourist Camp Historic District is comprised of a total of ten standing structures and a variety of landscape features. The eight contributing structures and the bulk of the landscape features are constructed of reinforced concrete and a variety of natural stone - all of which is found locally - laid to form an assortment of fanciful, even fantastic shapes that both ornament and define the unique character of this construction. As such, they constitute a unique example of vernacular design and construction that cannot be traced to any one identifiable architectural tradition.

Elaboration

The Crystal River Tourist Camp Historic District is comprised of a total of ten standing structures - all of which are one to one-and-one-half stories in height - and a variety of landscape features. The eight standing structures that contribute to the historic district are of reinforced concrete construction and faced with both a variety of local fieldstone -- most of which is of the stone type called "conglomerate" and "honeycomb" -- and such "found" cultural objects as bone chips and arrowheads. The overall stylistic character of the contributing masonry structures is unusual and unconnected with any known architectural traditions; it bears some resemblance only to some of the designs by such Art Nouveau architects as Antonio Gaudi, though this resemblance is probably coincidental. The rough, rustic aspect of this aesthetic is enlivened by the variety of textures created through the arrangement of the stones into distinct, architectonic fields that result in facades that are both three-dimensional and patterned. Four of the eight contributing buildings are covered with asphalt shingle gable roofs; the remaining four buildings feature flat, built-up tar roofs behind raised parapets. They are all supported by continuous stone and concrete foundations.

1. Office Building

The Office Building is a one-and-one-half story, gable roof, concrete and stone masonry administrative building with an attached gable roof garage (now a gift shop) to the north. A stone chimney rises from the eastern end of the wrap-around porch and a smaller brick flue rises through the southern slope of the gable roof.

The western or front elevation features a single story porch with a flat roof set behind a parapet that wraps around to the southern elevation. The two northern bays of the porch are open, while the two southern bays are enclosed (apparently an original feature of the house) and each lighted with a pair of nine-over-nine wood sash windows. The individual bays are separated by tall, square stone pillars with flat, square concrete caps.

United States Department of the Interior
National Park ServiceNational Register of Historic Places
Continuation SheetSection number 7 Page 2

The stone arches over each of the bays are faced with small, rounded stones the size of which is uniformly larger toward the bottom of the arch and smaller toward the top. The raised parapet above the porch wall is adorned with random fieldstones set to form crenellations. The main, gable roof structure behind is also faced with an assortment of fieldstones of various sizes and shapes, set into a patterned course at the cornice. The eastern elevation is lighted with a pair of nine-over-nine wood sash windows in the center of the gable peak and by a single window placed directly below (now filled). The elevation is accessed via a pair of single-leaf entrances, placed symmetrically within the facade, and which are each sheltered with a gable roof porch supported upon a pair of supports that join into one central column supporting the roof in the shape of a tuning fork.

The northern and southern elevations are lighted with nine-over-nine wood sash windows of various configurations, and a single-leaf entrance provides access in the center of the southern elevation. The attached garage is of virtually identical style and construction; its original western garage door opening has been enclosed to form a gift shop, and the eastern opening has also been filled.

2. *Duplex #1*

This single-story, stone and concrete masonry residential building is covered with a flat roof set behind a raised, crenellated stone parapet. Its southern or front elevation is flanked at either end by an open, arched automobile shelter, and two exterior stone chimneys are placed symmetrically. Two single-leaf entrances access the two separate apartments behind, and an assortment of fixed and sash windows light the facade. The eastern, western and southern elevations feature a number of window openings, most of which are now filled, and a narrow patio surrounded by a low stone wall projects from the front facade.

3. *Cabin #1*

Cabin #1 is a single-story, stone and concrete masonry residential building that features a flat roof set behind a raised, crenellated stone parapet. Its front or northern facade consists of a main block to the west and a recessed bay to the east. The western bay is bisected by an external stone chimney, with a single fixed window to the west and a single-leaf entrance with a bracketed gable roof porch to the east. The porch roof is noteworthy for its pediment decoration, which features a number of arrowheads surrounding a round stone, all set into stucco. The recessed bay to the east is lighted with a single one-over-one wood sash window. The western elevation is lighted with a pair of one-over-one wood sash windows to the north and a recent one-over-one

United States Department of the Interior
National Park ServiceNational Register of Historic Places
Continuation SheetSection number 7 Page 3

horizontal window placed in the enclosed automobile shelter to the south. The eastern elevation is lighted by a pair of one-over-one wood sash windows in the recessed bay to the north and another single one-over-one wood sash window to the south. The rear elevation is blank.

4. *Cabin #2*

Cabin #2 is a single-story, stone and concrete masonry residential building covered with a flat roof set behind a raised, crenellated stone parapet. It is rectangular in plan. The front facade is roughly bisected by an exterior stone chimney set between a fixed window to the west and a single-leaf entrance to the east. The eastern facade is punctuated only by a single window opening that originally held a pair of sash windows (it is now filled) and the enclosed area at the rear that was originally an automobile shelter; the western facade features a filled window to the north and a projecting bay to the south that encloses a bathroom.

5. *Duplex #2*

The Triplex is a single-story, stone and concrete masonry residential building with a flat roof and flanking shed roofs set behind a raised, crenellated stone parapet. Two exterior stone chimneys are placed across the front or western facade, venting the two separate apartments within. An open, arched carport is attached to the northern end of the building, and is supported upon two stone piers. A single-leaf entry accesses the first apartment to the south, and another arched carport (now enclosed) is placed in the center of the facade. The single-leaf entrance to the second apartment is placed just to the north of the second chimney, and a last wood sash window finishes the elevation. The northern elevation beneath the carport is lighted by a pair of one-over-one wood sash windows, and the southern elevation is blank with the exception of a single leaf door placed to the east. The eastern or rear elevation features a large, filled opening to the south (apparently some kind of a loading dock originally, as the opening is raised above grade and features a large, projecting concrete sill), a pair of horizontal windows in the center and another pair of one-over-one wood sash windows toward the north.

6. *Four-Unit Structure*

This one-and-one-half story, gable roof, concrete and stone masonry residential structure contains four rental units and features what is probably a later carport attached to southern end of the building. It is accessed via two separate single-leaf entrances in the southern elevation, another in the center of the western elevation, and another toward

United States Department of the Interior
National Park ServiceNational Register of Historic Places
Continuation SheetSection number 7 Page 4

the northern end of the eastern elevation. It is lighted with three-over-one windows throughout. A single exterior end chimney rises through the center of the southern gable end, and a central doghouse vent dormer is placed in the center of the western slope of the gable roof. A broad stone patio, complete with a built-in barbecue pit, is placed against the western elevation.

7. *Cabin #3* (NC)

Cabin #3 is a combination wood frame and stone masonry rental residential structure that was constructed c. 1945. In addition to being less than fifty years old, its stone veneer is markedly different in both material and texture from that of the historic structures; therefore it is non-contributing.

8. *Comfort Facility* (NC)

The Comfort Facility is a single story, stone masonry lavatory facility for both men and women. Though sympathetic in overall form and materials, it was constructed c. 1975 and is thus non-contributing.

9. *Pumphouse*

The Pumphouse is a single story, gable roof, stone and concrete masonry water pumping facility that was constructed as part of the original tourist camp. It features the same conglomerate stone as seen in the other historic structures, along with the same variety of other fieldstone.

10. *Cave Entrance Structure*

The Cave Entrance Structure is a single story, gambrel roof, stone and concrete masonry structure used to store cultural artifacts found within the cave. Its roof is covered with asphalt shingles; it is open at either end.

Also included as contributing resources within this district are an abundance of such original stone masonry landscape features as rock walls and fences, patios, barbecue pits, retaining walls, arched gateways, birdbaths, steps, paths and stoops.

**United States Department of the Interior
National Park Service**

**National Register of Historic Places
Continuation Sheet**

Section number 8 Page 1

Summary

Criterion C, statewide significance

The Crystal River Tourist Camp is significant as the only known extant example of an intact twentieth century automobile tourist camp designed in this "Mannerist" interpretation of the organic Rustic style that was gaining currency during the 1930's. Built around the opening to a cave that shelters the largely-underground Crystal River, this site has long been a popular recreational site for the surrounding community of Cave City.

Elaboration

One of the types of commercial architecture that developed as a result of the introduction of the automobile to American society and culture was the tourist cabin. This was typically a small, single unit overnight residential structure, of either wood frame or masonry construction, and virtually always erected as part of a larger ensemble of other cabins, as well as administration and service buildings, and other associated recreational structures. These ensembles became known by such names as "tourist camps" and "cabin courts," and became widespread in both relatively urban and rural areas, wherever major highways brought travellers who required safe and dependable overnight accommodations.

Though such cabin courts would eventually be constructed in a variety of popular architectural styles, the first of such cabins were typically simple, functional shelters, many of which were enclosed only with screens instead of glass, and thus unheated and without indoor plumbing. As such, tourist cabin construction began as an exercise in vernacular design and construction, as it was commonly the product of untrained or minimally-trained carpenters and/or masons whose primary structural concern was the simple shedding of water. And though trained architects would later be hired to create more erudite and architecturally sophisticated versions of the tourist cabin in a variety of popular styles, this "folk architecture" attitude toward such construction persisted well into the 1950's.

Clearly, it was such a perspective on tourist camp design that prevailed during the conception and construction of the bulk of the tourist camp buildings at the Crystal River Tourist Camp. This camp was built around the entrance to the cave that gave the surrounding community of Cave City its name when it was first established as such c. 1891. In fact, the Laman brothers (about which little else is known) settled the land around the cave entrance at that time for the purpose of exploiting the commercial potential of the cave site, though it is not clear what success, if any, they enjoyed. Its first known development occurred in 1934, when Hubert C. Carpenter, a retired postal service employee, purchased the lot surrounding the cave with the intent of developing the entire site as both an overnight stopover for tourists travelling on Highway 167, a principal north-south route in northeast Arkansas, and as a sightseeing and

**United States Department of the Interior
National Park Service****National Register of Historic Places
Continuation Sheet**Section number 8 Page 2

recreational destination in its own right focusing on the cave with its underground river and its prehistoric cultural history (the rich prehistoric archeological record that formerly existed with the various "rooms" of the cave documented its periodic use by a variety of Native American cultures; this has been pilfered over the past fifty years, however, and has been so disturbed that little can now be determined from the record that does remain).

Carpenter hired a local mason, Prince Matlock, to lay all the stonework for both the buildings and the surrounding landscape features. Little else is known about Matlock and his architectural education and stylistic influences, but it is clear from his work at the Crystal River Tourist Camp that he brought an individual and distinctive creative sense to this construction. The use of the random fieldstone to form the crenellations along the parapets and around the chimney tops of several of the buildings, the coursing of the smaller, round stones to reflect certain architectural elements of the buildings themselves, and the placement throughout of vaguely symbolic configurations (crosses, hearts, etc.) of random stones and other objects lends all of these structures a fantastic, almost prehistoric appearance. This sense of the unusual also permeated the construction of the surrounding landscape features, many of which feature such decorative elements as iron wagon wheels cemented into the patios, barbecue pits with excessively elaborate stonework, and arched gateways that open into nothing in particular and support nothing at all. Even within a rocky, mountainous region that is known for its native stone construction tradition, the buildings and landscape features of the Crystal River Tourist Camp remain puzzling and distinctive.

Though little is known about specific recreational activities that took place at the Crystal River Tourist Camp beyond the obvious cave tours and picnicking, it is known generally that the cave and the surrounding site have been heavily used by the local community ever since the construction of these structures for social and recreational events of all kinds. Family reunions, parties, and even weddings have taken place within the boundaries of the site; in fact, the camp continues to serve the local community as a recreational destination to this day. However, the Crystal River Tourist Camp is best known for the quirky, unusual style of its buildings and the surrounding construction. It is unlike any other known extant automobile tourist court in the state, and is surprisingly intact. For this reason it has been nominated under Criterion C with local significance.

United States Department of the Interior
National Park Service

National Register of Historic Places
Continuation Sheet

Section number 9 Page 1

Carpenter, Charlie Joe, *Personal Interview*, January 24, 1988.

Carpenter, Hubert C., *Taped Interview*, March 7, 1988.

"Cave City History Began With The Lamans," *Batesville Guard*, June 6, 1986, p. 1.

Christenberry, Mrs. Lavaughn, "Crystal River Cave," unpublished manuscript.

Liebs, Chester, *Main Street to Miracle Mile*, (New York, 1985), pp. 169-181.

"Mysterious Crystal River Cave Filled With Legends," *Batesville Guard*, December 3, 1968, p. 1.

Sharp County Tax Records; 1934 and 1936.

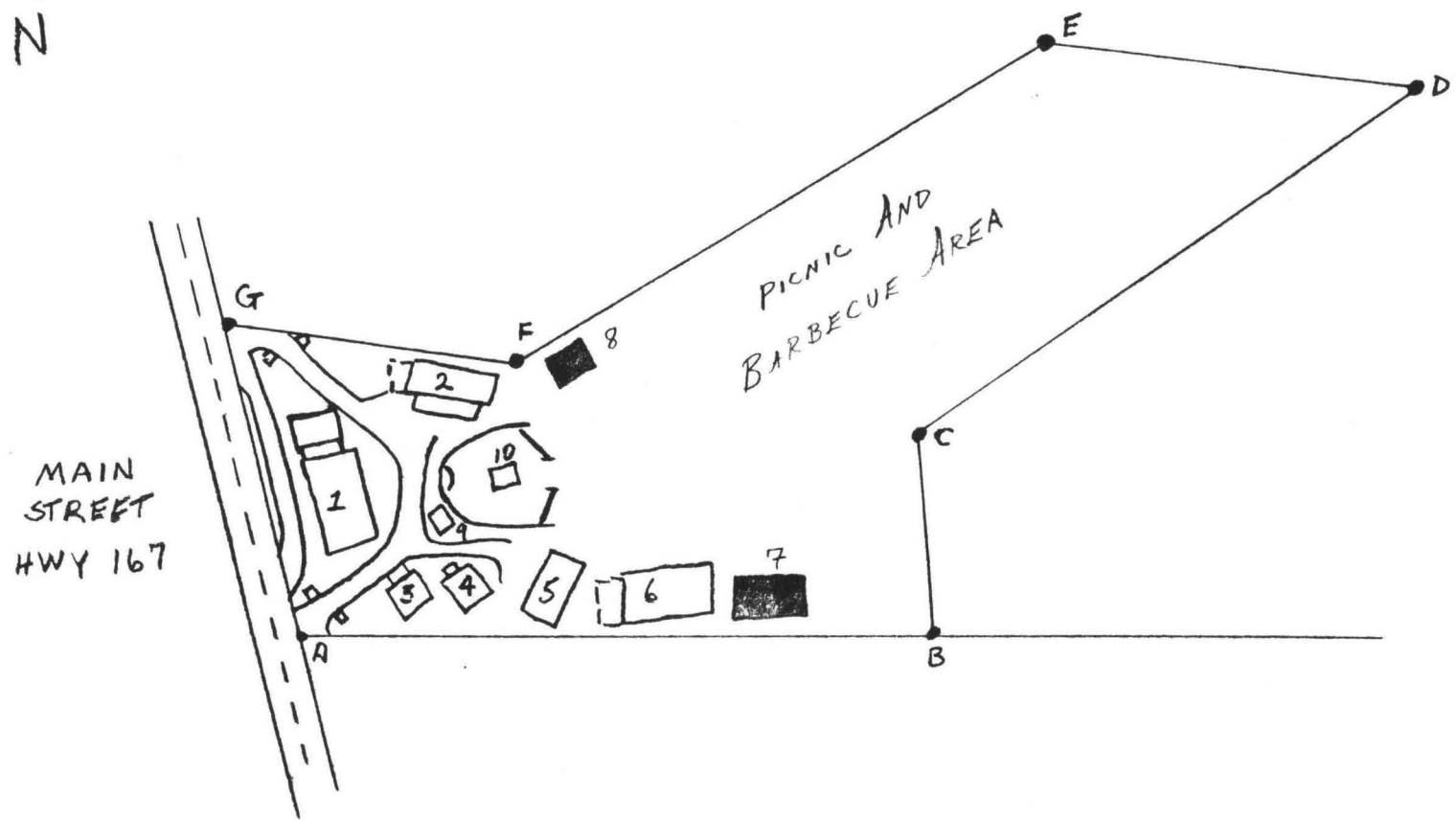
Williams, Donna, *Personal Interview*, January 19, 1988.

Williams, Donna, *Personal Interview*, January 21, 1988.

**United States Department of the Interior
National Park Service****National Register of Historic Places
Continuation Sheet**Section number 10 Page 1

Verbal Boundary Description

Beginning at a point formed by the intersection of the eastern edge of U.S. Highway 167 (Main Street) with the northern edge of Cave Street (Point A), proceed easterly along said edge for a distance of 357 feet to a point (Point B) formed by its intersection with a perpendicular line running parallel to the eastern elevation of Cabin #3 (#7); thence proceed northerly along said line for a distance of 116 feet to a point (Point C) formed by its intersection with a line running northeasterly along the southern edge of the picnic and barbecue area; thence proceed northeasterly along said line for a distance of 316 1/2 feet to a point (Point D) formed by its intersection with a line running along the northern edge of the picnic and barbecue area; thence proceed westerly along said line for a distance of 200 feet to a point (Point E) formed by its intersection with a line running southwesterly along the southern edge of Misty Street; thence proceed southwesterly along said line for a distance of 291 feet to the point (Point F) where Misty Street turns northwesterly and then 170 feet along said line to a point formed by its intersection with the eastern edge of U.S. Highway 167 (Point G); thence proceed southerly along said line for a distance of 175 feet to the point of beginning.



CRYSTAL RIVER
TOURIST CAMP
CAVE CITY, ARKANSAS
SCALE : 1" = 100'-0"
■ : NON-CONTRIBUTING

United States Department of the Interior
National Park Service

National Register of Historic Places
Continuation Sheet

Section number _____ Page _____

SUPPLEMENTARY LISTING RECORD

NRIS Reference Number: 91000620

Date Listed: 6/6/91

Crystal River Tourist Camp
Property Name

Sharp
County

ARKANSAS
State

Multiple Name

This property is listed in the National Register of Historic Places in accordance with the attached nomination documentation subject to the following exceptions, exclusions, or amendments, notwithstanding the National Park Service certification included in the nomination documentation.

Gerl Patrick Andrus
Signature of the Keeper

6/10/91
Date of Action

=====
Amended Items in Nomination:

Section No. 8

Ken Story, of the Arkansas SHPO office, has clarified the fact that the last sentence of the Section 8 narrative should read ". . . Criterion C with statewide significance (6/7/91)."

DISTRIBUTION:

National Register property file
Nominating Authority (without nomination attachment)

UNITED STATES DEPARTMENT OF THE INTERIOR
NATIONAL PARK SERVICE

NATIONAL REGISTER OF HISTORIC PLACES
EVALUATION/RETURN SHEET

REQUESTED ACTION: NOMINATION

PROPERTY Crystal River Tourist Camp
NAME:

MULTIPLE
NAME:

STATE & COUNTY: ARKANSAS, Sharp

DATE RECEIVED: 4/22/91 DATE OF PENDING LIST: 5/09/91
DATE OF 16TH DAY: 5/25/91 DATE OF 45TH DAY: 6/06/91
DATE OF WEEKLY LIST:

REFERENCE NUMBER: 91000620

NOMINATOR: STATE

REASONS FOR REVIEW:

APPEAL: N DATA PROBLEM: N LANDSCAPE: N LESS THAN 50 YEARS: N
OTHER: N PDIL: N PERIOD: N PROGRAM UNAPPROVED: N
REQUEST: N SAMPLE: N SLR DRAFT: ☒ NATIONAL: N

COMMENT WAIVER: N

☒ ACCEPT ☐ RETURN ☐ REJECT 6/6/91 DATE

ABSTRACT/SUMMARY COMMENTS:

This tourist camp, built in 1934, is architecturally significant for its highly individualistic, vaguely Mannerist architecture, both of the buildings & the surrounding landscape features.

RECOM./CRITERIA Accept/C
REVIEWER Harper
DISCIPLINE Historian
DATE 6/6/91

DOCUMENTATION see attached comments Y/N see attached SLR ☒ Y ☐ N

CLASSIFICATION

___count ___resource type

STATE/FEDERAL AGENCY CERTIFICATION

FUNCTION

___historic ___current

DESCRIPTION

___architectural classification
___materials
___descriptive text

SIGNIFICANCE

Period Areas of Significance--Check and justify below

Specific dates Builder/Architect
Statement of Significance (in one paragraph)

___summary paragraph
___completeness
___clarity
___applicable criteria
___justification of areas checked
___relating significance to the resource
___context
___relationship of integrity to significance
___justification of exception
___other

BIBLIOGRAPHY

GEOGRAPHICAL DATA

___acreage ___verbal boundary description
___UTMs ___boundary justification

ACCOMPANYING DOCUMENTATION/PRESENTATION

___sketch maps ___USGS maps ___photographs ___presentation

OTHER COMMENTS

Questions concerning this nomination may be directed to

_____ Phone _____

Signed _____ Date _____



CRYSTAL RIVER TOURIST CAMP; OFFICE BUILDING

CAVE CITY, ARKANSAS

PHOTOGRAPHED BY J. MITCHELL

JUNE, 1988

NEGATIVE ON FILE AT AHPP

VIEW FROM SOUTHEAST

1



Crystal River Tourist Camp; OFFICE BUILDING
Buckeye City Arkansas

Photographed by S. Mitchell

June, 1988

Negative in file at AHCP

VIEW FROM NORTHEAST

#1



Crystal River Tourist Camp; OFFICE BUILDING

Cave City ARKANSAS

Photographed by S. Mitchell

JUNE, 1988

Negatives on FILE AT AHPP

DETAIL OF ATTACHED GARAGE; VIEW FROM EAST

#1



Crystal River Tourist Camp ; OFFICE BUILDING

Cave City, Arkansas

Photographed by S. Mitchell

June, 1988

Negatives on file at AHPP

DETAIL OF ATTACHED GARAGE; VIEW FROM WEST

#1



Crystal River Tourist Camp ; OFFICE BUILDING
Cave City, Arkansas

Photographed by S. Mitchell

June, 1988

Negatives on file at AHPP

VIEW FROM NORTH

#1



Crystal River Tourist Camp; OFFICE BUILDING

Cause City, Arkansas

Photographed by S. Mitchell

June 1988

Negative on file at AHPP

VIEW FROM SOUTHEAST

#1



Crystal River Tourist Camp ; OFFICE BUILDING

Cave City, Arkansas

Photographed by S. Mitchell

June, 1938

Negatives on file at AHPP

VIEW FROM SOUTH

#1



Crystal River Tourist Camp; OFFICE BUILDING

Cave City ARKANSAS

Photographed by S. Mitchell

June, 1988

Negative on File at AHPP

DETAIL OF DECORATIVE MASONRY

#1



Crystal River Tourist Camp ; OFFICE BUILDING
Cave City Arkansas
Photographed by S. Mitchell
June, 1988

Negative on file at AHPP

DETAIL OF DECORATIVE MASONRY

#1



Crystal River Tourist Camp ; OFFICE BUILDING

Cave City Arkansas

Photographed by S. Mitchell

June, 1988

Negative on file at AHPD

DETAIL OF REAR ENTRANCE PORCH

#1



Crystal River Tourist Camp; OFFICE BUILDING

Cave City, ARKANSAS

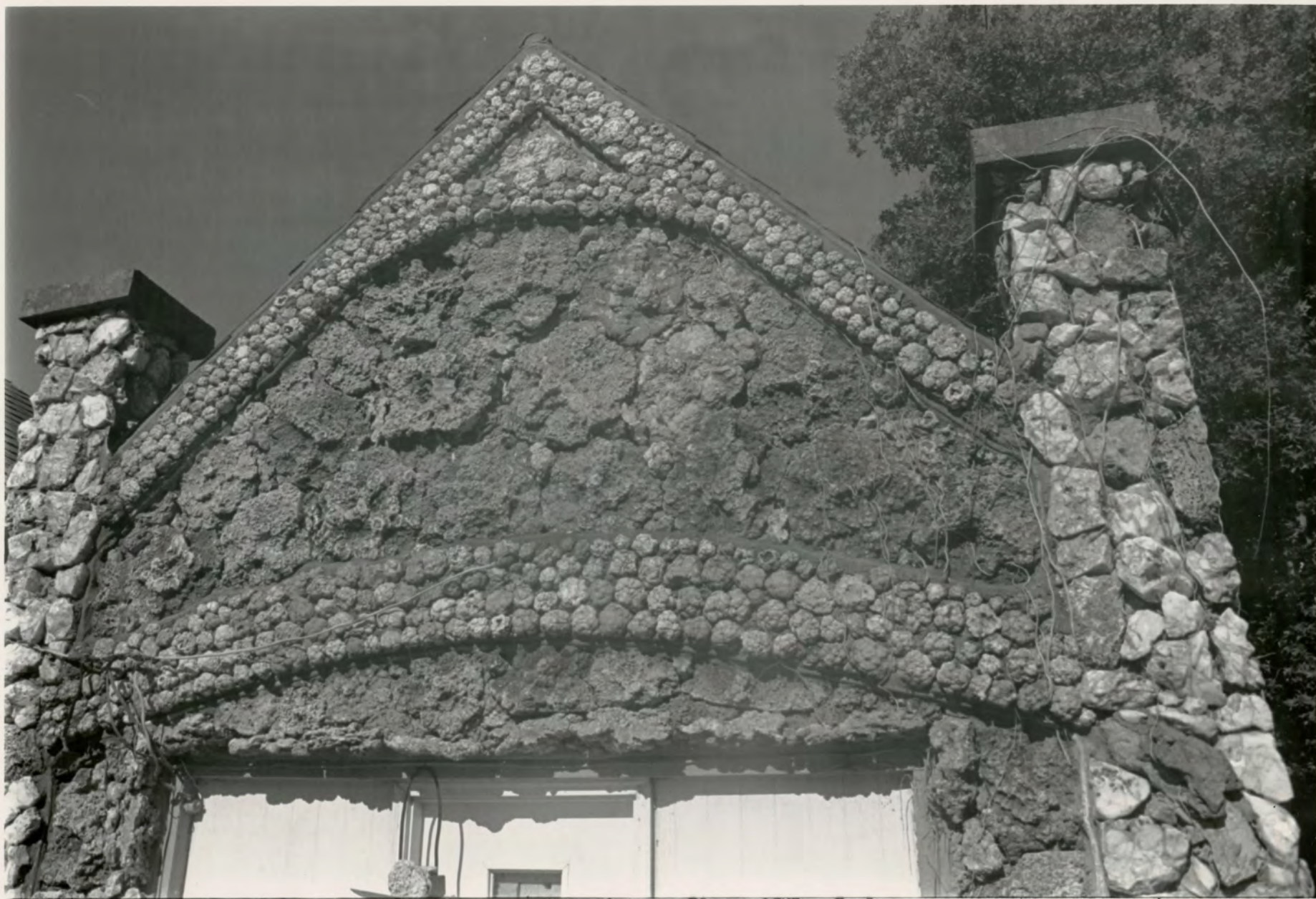
Photographed by S. Mitchell

JUNE, 1988

Negatives on FILE AT AHPP

GABLE DETAIL

#1



Crystal River Tourist Camp ; OFFICE BUILDING

Cave City, ARKANSAS

Photographed by S. Mitchell

June, 1988

Negatives on file at AHPP

GABLE DETAIL

#1



Crystal River Tourist Camp ; OFFICE BUILDING

Cape City, Arkansas

Photographed by S. Mitchell

June 1988

Negative on file at AHPP

GABLE DETAIL

#1



Crystal River Tourist Camp; OFFICE BUILDING

Cane City, Arkansas

Photographed by S. Mitchell

June 1988

Negative on file at AHPP

ARCH DETAIL

#1



Crystal River Tourist Camp; OFFICE BUILDING

Cave City Arkansas

Photographed by S. Mitchell

June, 1988

Negative on file at AHPP

VIEW FROM SOUTHWEST

#1



CRYSTAL RIVER TOURIST CAMP; OFFICE BUILDING

CAVE CITY, ARKANSAS

PHOTOGRAPHED BY J. MITCHELL

JUNE, 1988

NEGATIVE ON FILE AT AHPP

VIEW FROM SOUTH

1



Crystal River Tourist Camp; ~~OFFICE BUILDING~~ DUPLEX #1

Cave City, Arkansas

Photographed by S. Mitchell

June 1988

negatives on file AHPP

VIEW FROM SOUTH

#2



Crystal River Tourist Camp; DUPLEX #1

Cave City, ARKANSAS

Photographed by S Mitchell

JUNE, 1988

Negatives ON FILE AT AHPP

VIEW FROM SOUTHWEST

#2



Crystal River Tourist Camp; DUPLEX #1

Cave City, Arkansas

Photographed by S. Mitchell

June, 1988

negatives on file at AHPP

VIEW FROM NORTHEAST

#2



Crystal River Tourist Camp; DUPLEX #1

Cave City, ARKANSAS

Photographed by S. Mitchell

June, 1988

Negative ON File AT AHPP

FRONT PORCH DETAIL

#2



Crystal River Tourist Camp; CABIN #1

Cave City, ARKANSAS

Photographed by S. Mitchell

June, 1988

Negative on File at AHPP

VIEW FROM NORTH

#3



FOR SALE
BUFFINGTON
VERMONT

Crystal River Tourist Camp; CABIN #1

Cave City, ARKANSAS

Photographed by S. Mitchell

June, 1988

Negative on File at AHPP

VIEW FROM WEST

#3



Crystal River Tourist Camp; CABIN #1

Cave City, Arkansas

Photographed by S. Mitchell

June, 1988

negatives on file AHPP

PORCH PEDIMENT DETAIL

#3



Crystal River Tourist Camp ; CABIN #2

Cave City, Arkansas

Photographed by S. Mitchell

June, 1988

Negative on file at AHPP

VIEW FROM NORTH

4



Crystal River Tourist Camp; CABIN #2

Cave City, ARKANSAS

Photographed by S. Mitchell

June, 1988

Negatives on file at AHPP

VIEW FROM SOUTH

4



Crystal River Tourist Camp ; ~~FRIPLER~~ DUPLEX #2

Cave City, Arkansas

Photographed by S. Mitchell

June, 1938

Negative on file at AHPP

VIEW FROM NORTHEAST

5



Crystal River Tourist Camp ; ~~TRIPLEX~~ DUPLEX #2

Cave City, ARKANSAS

Photographed by S. Mitchell

JUNE, 1988

NEGATIVES ON FILE AT AHPP

VIEW FROM NORTHWEST

5



Crystal River Tourist Camp; ~~FERRIER~~ DUPLEX #2

Cave City Arkansas

Photographed by S. Mitchell

June, 1988

Negative on file at AHPP

VIEW FROM EAST

5



Crystal River Tourist Camp ; Four-Unit Structure

Cave City, Arkansas

Photographed by S. Mitchell

June 1988

negatives on file A+PP

VIEW FROM NORTHEAST

#6



Crystal River Tourist Camp ; Four-Unit Building

Cave City, Arkansas

Photographed by S. Mitchell

June 1988

negatives on file AHPP

VIEW FROM SOUTH

#6



Crystal River Tourist Camp ; FOUR-UNIT STRUCTURE

CAVE CITY, ARKANSAS

Photographed by S. Mitchell

JUNE, 1988

NEGATIVES ON FILE AT AHPP

VIEW FROM NORTHWEST

#6



Cryptal River Tourist Camp; Cabin #3

Cave City, ARKANSAS

Photographed by S. Mitchell

June 1988

Negatives on file AHPP

VIEW FROM SOUTHEAST

7



Crystal River Tourist Camp ; Cabin #3
Cave City, Arkansas
Photographed by S. Mitchell

June 1988

negatives on file AHPP

VIEW FROM NORTHWEST

7



Crystal River Tourist Camp; COMFORT FACILITY

Cave City, Arkansas

Photographed by J. Mitchell

June 1988

negatives on file AHPP

VIEW FROM SOUTHEAST

8



Crystal River Tourist Camp ; PUMPHOUSE

Cave City, ARKANSAS

Photographed by S. Mitchell

JUNE, 1988

NEGATIVES ON FILE AT AHPP

VIEW FROM NORTHEAST

#9



Crystal River Tourist Camp ; POMP HOUSE

CAVE City, ARKANSAS

Photographed by S. Mitchell

June, 1988

Negatives on File at AHPD

VIEW FROM SOUTHWEST

9



CRYSTAL RIVER TOURIST CAMP; CAVE ENTRANCE STRUCTURE

CAVE CITY, ARKANSAS

PHOTOGRAPHED BY J. MITCHELL

JUNE, 1988

NEGATIVES ON FILE AT AHPP

VIEW FROM SOUTHWEST

#10



Captal River Tourist Camp; COVE ENTRANCE STRUCTURE

Cave City, Arkansas

Photographed by S. Mitchell

June 1988

negatives on file AHPP

VIEW FROM EAST

#10



Crystal River Tourist Camp
Cave City, Arkansas

Photographed by S. Mitchell

June, 1988

negatives on file AHPP

STONE AND CONCRETE LANDSCAPE FEATURE DETAILS



Crystal River Tourist Camp

Cave City, ARKANSAS

Photographed by S. Mitchell

June, 1988

Negative ~~AN~~ File At AHPP

STONE AND CONCRETE POST DETAIL



Crystal River Tourist Camp
Cave City, Arkansas
Photographed by S. Mitchell
June, 1988
negatives on file at AHPP
STONE WALKWAY GATE DETAIL



CRYSTAL RIVER TOURIST CAMP
CAVE CITY, ARKANSAS
PHOTOGRAPHED BY J. MITCHELL
JUNE, 1988
NEGATIVE ON FILE AT AHPP
CAVE ENTRANCE GATE DETAIL

Crystal River Tourist Camp
Cave City, Arkansas
Photographed by J. Mitchell
June 1988
negative on file AHPP



Crystal River Tourist Camp

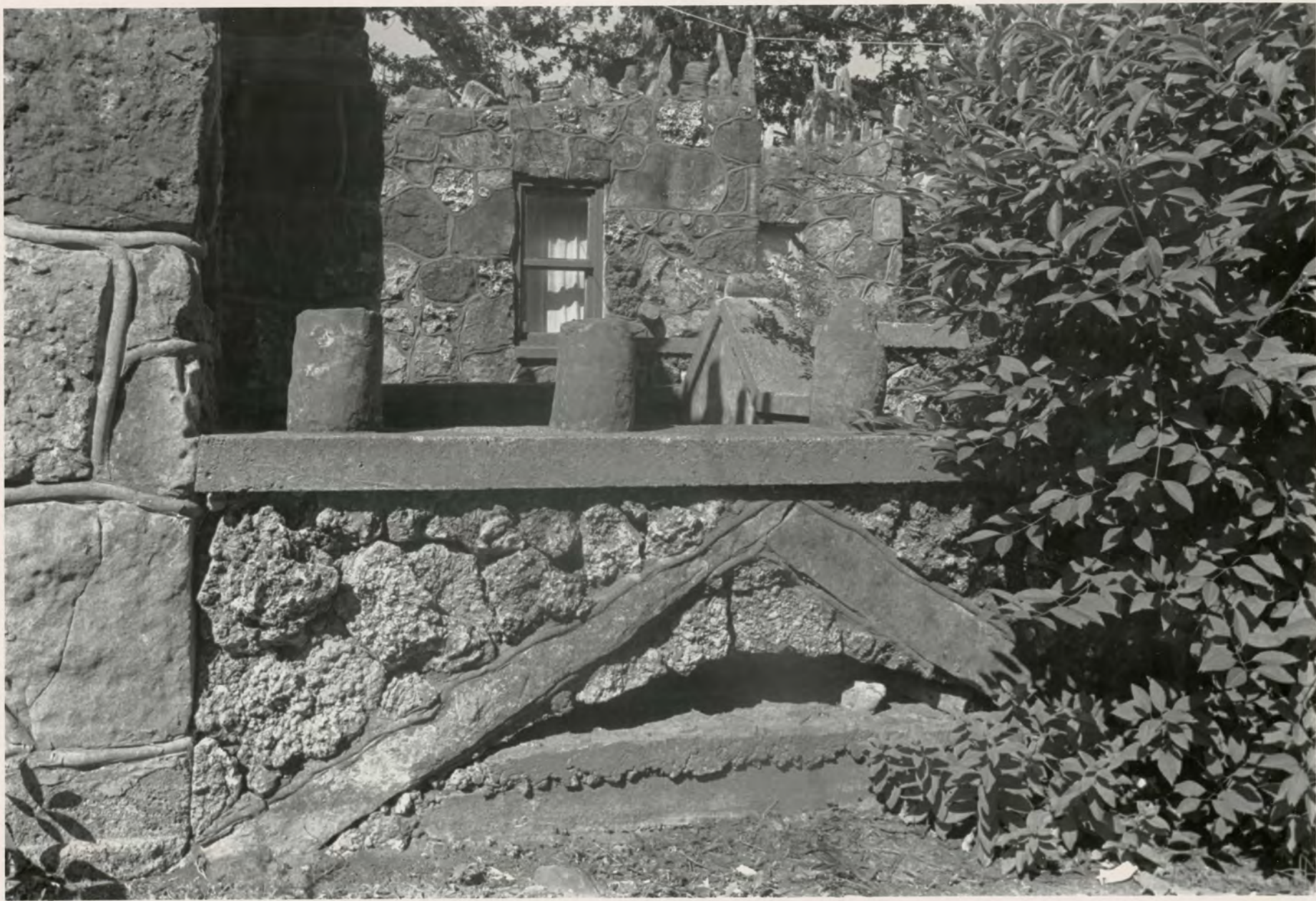
Cave City, Arkansas

Photographed by S. Mitchell

June, 1988

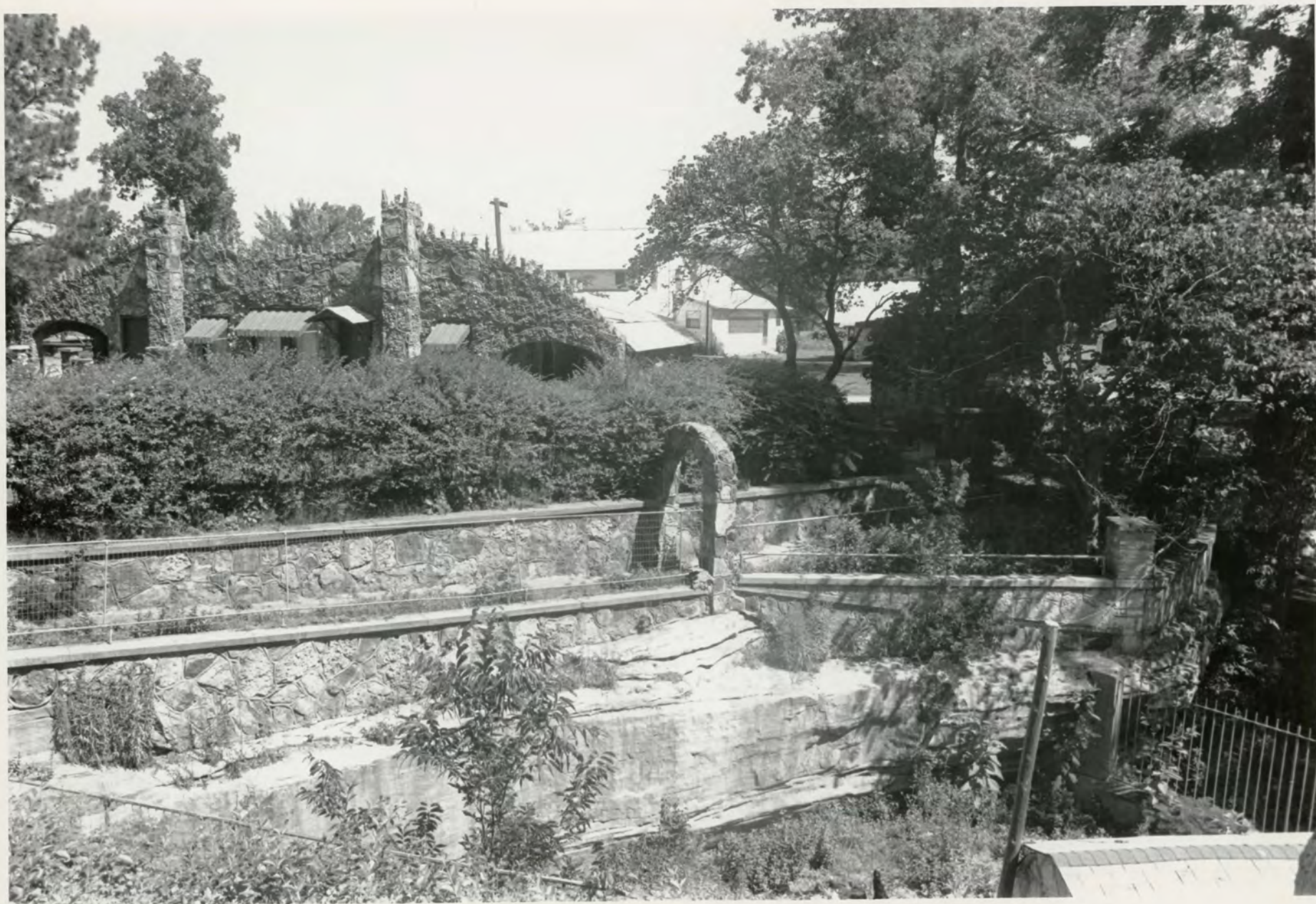
negatives on file AHPP

STONE FENCE POST DETAIL



Crystal River Tourist Camp
Cave City, ARKANSAS
Photographed by S. Mitchell
June, 1988
Negatives on File at AHPP

DETAIL OF STONE WORK



Crystal River Tourist Camp

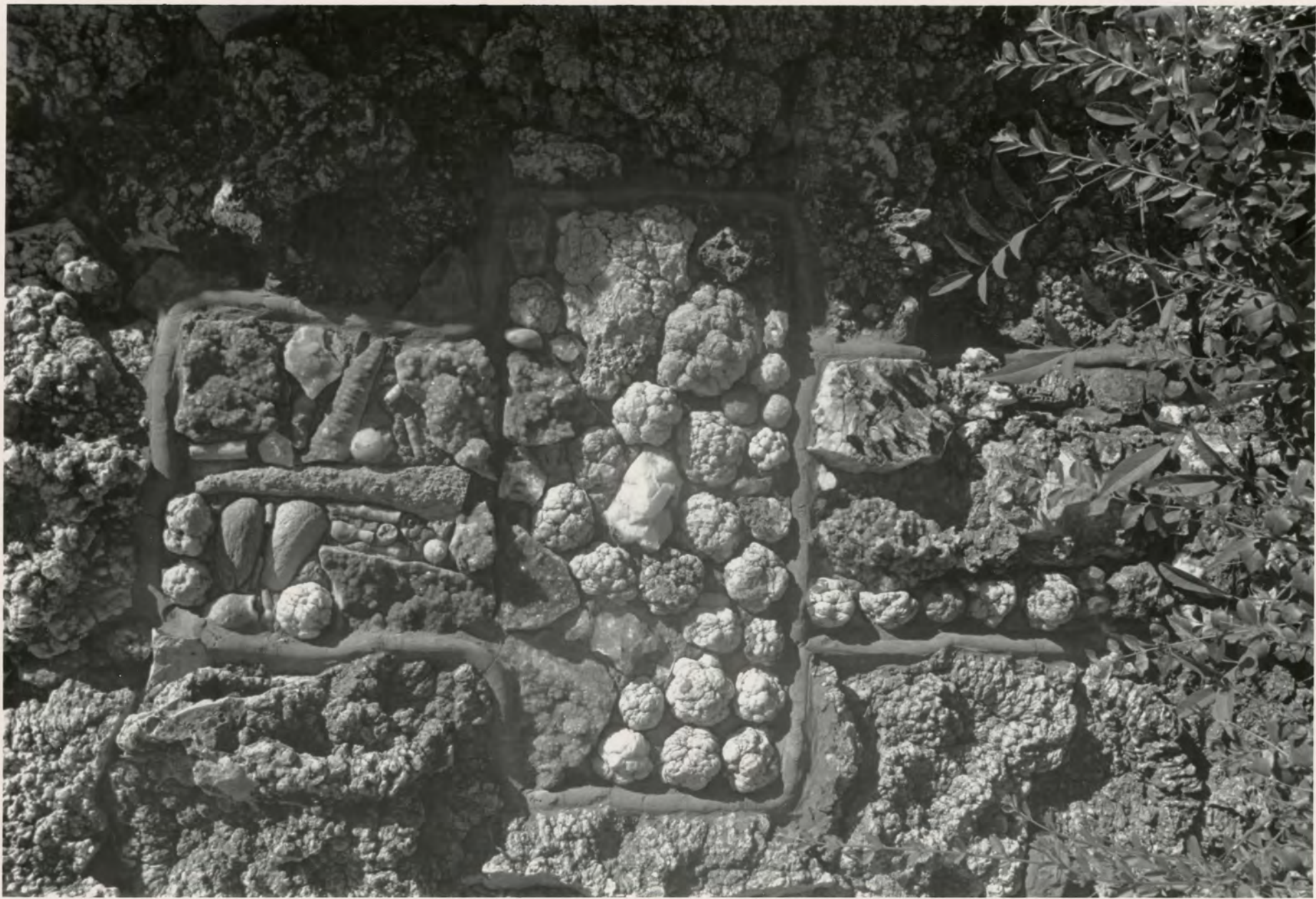
Cave City ARKANSAS

Photographed by S. Mitchell

JUNE, 1988

Negatives on file at AHPP

OVERVIEW OF LANDSCAPE FEATURES FROM SOUTHEAST



Crystal River Tourist Camp
Cave City, Arkansas
Photographed by S. Mitchell
June, 1988
Negatives on file at AHPP
STONE DECORATIVE DETAIL



Crystal River Tourist Camp
Cave City Arkansas
Photographed by S. Mitchell
June, 1988
Negative on file at AHPP

DETAIL OF STONE LANDSCAPE FEATURES



Crystal River Tourist Camp

Cave City, Arkansas

Photographed by S. Mitchell

June, 1988

Negatives on file at AHPP

OVERVIEW OF SITE FROM NORTH



Crystal River Tourist Camp

Cave City, Arkansas

Photographed by S. Mitchell

June, 1988

Negatives on file at AHPP

CAMP ENTRANCE GATE DETAIL





Crystal River Tourist Camp
Cave City, Arkansas
Photographed by S. Mitchell
June 1988
Negative on file at AHPP
DETAIL OF ENTRANCE SIGN



Crystal River Tourist Camp

Cave City, ARKANSAS

Photographed by S. Mitchell

June, 1988

Negative on File at AHPP

OVERVIEW OF ENTRANCE FROM SOUTHWEST



Crystal River Tourist Camp

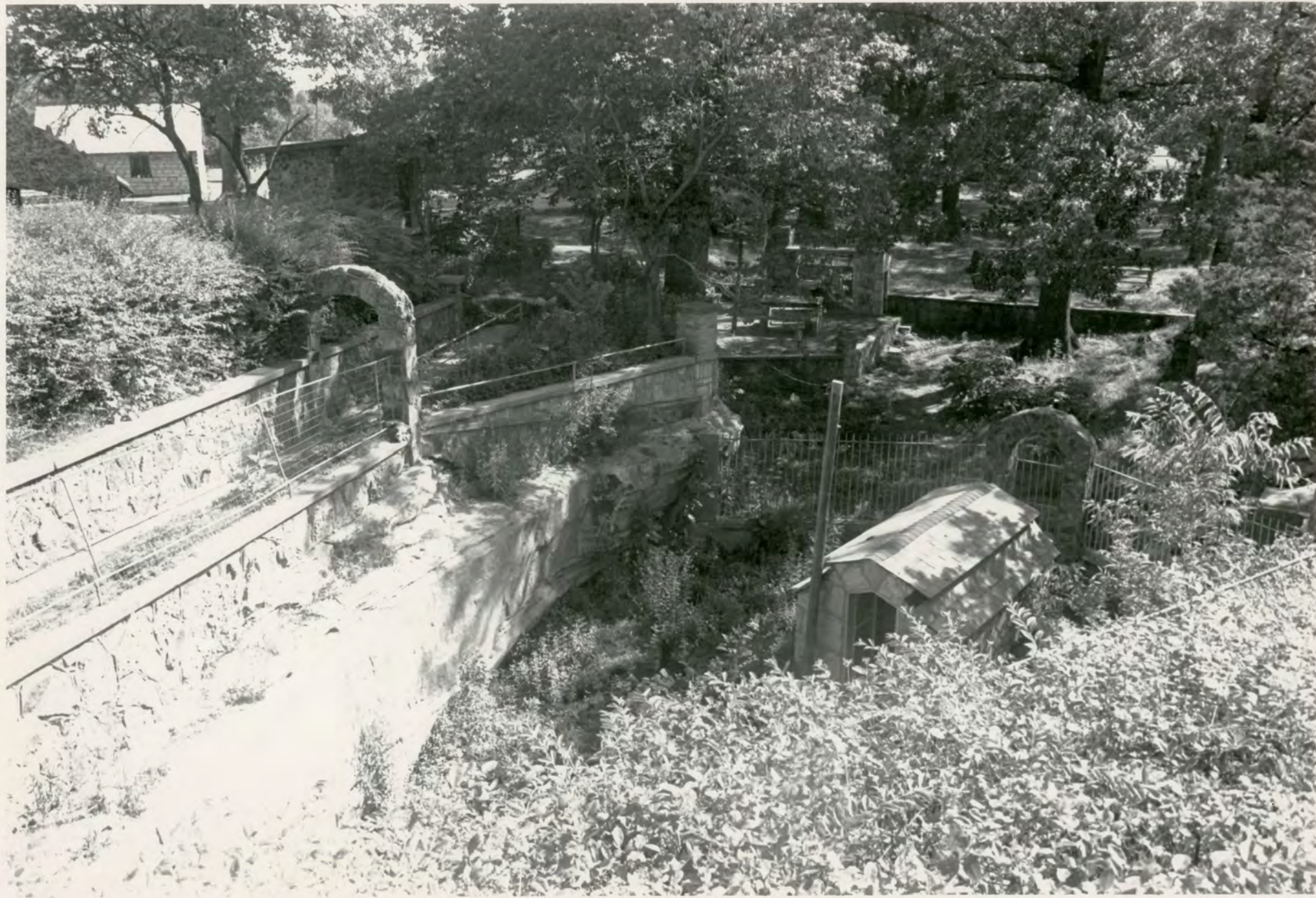
Cave City, ARKANSAS

Photographed by S. Mitchell

June, 1988

Negatives on file at AHPP

OVERVIEW OF CAVE ENTRANCE GATE AND LANDSCAPE FEATURES FROM SOUTH



Cruital River Tourist Camp

Cave City, Arkansas

Photographed by S. Mitchell

June 1988

Negatives on file AHPP

OVERVIEW OF CAVE ENTRANCE AND LANDSCAPE FEATURES
FROM SOUTHWEST



CRYSTAL RIVER TOURIST CAMP

CAVE CITY, ARKANSAS

PHOTOGRAPHED BY J. MITCHELL

JUNE, 1988

NEGATIVE ON FILE AT AHPP

VIEW OF CAVE ENTRANCE FROM NORTHEAST



Crystal River Tourist Camp

Cave City, ARKANSAS

Photographed by S. Mitchell

June, 1988

Negatives on File at AHPP

OVERVIEW OF CABINS FROM NORTHEAST



Crystal River Tourist Camp

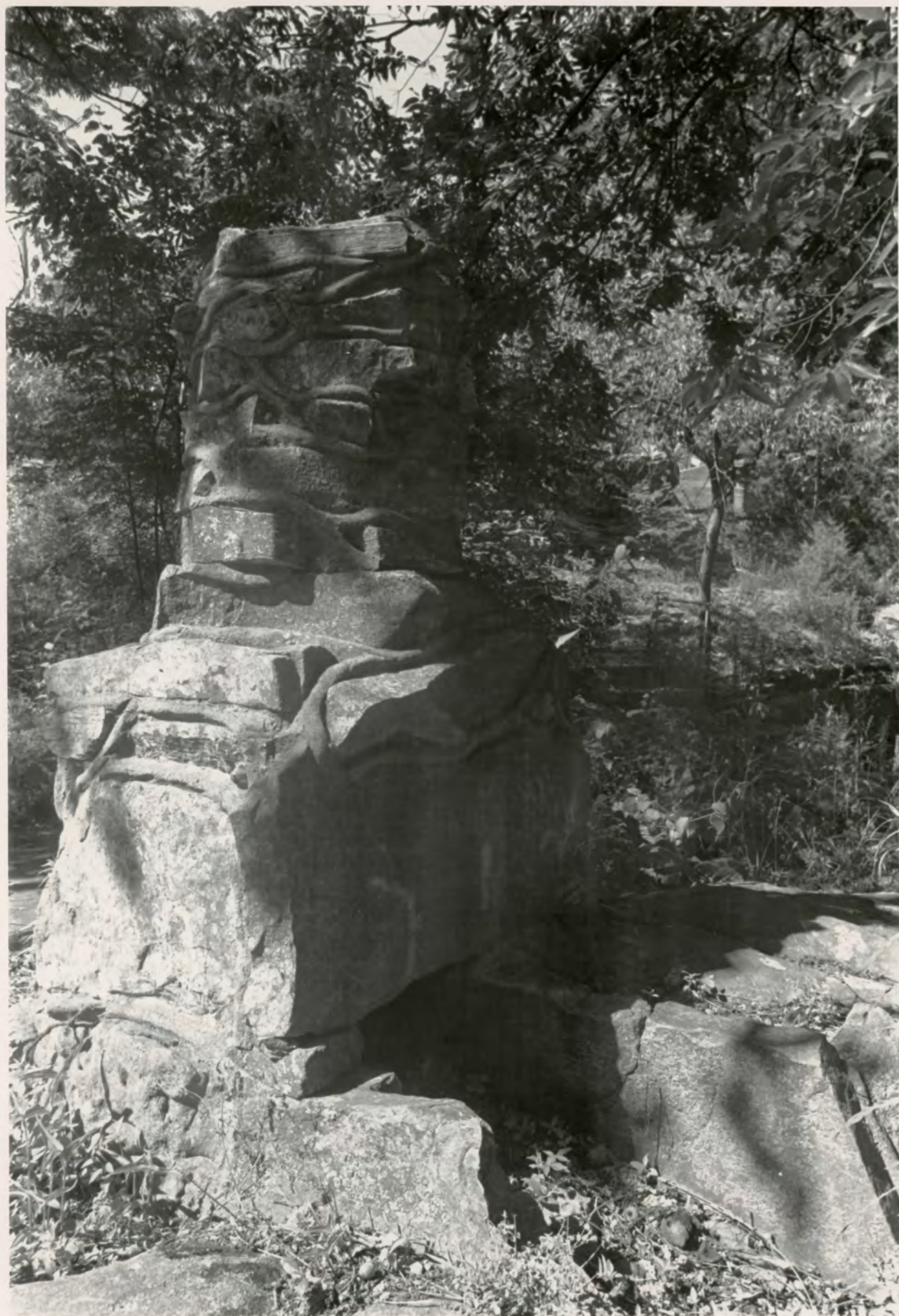
Cave City, Arkansas

Photographed by S. Mitchell

June 1988

Negatives on file AHPP

BARBEQUE PIT DETAIL



Crystal River Tourist Camp

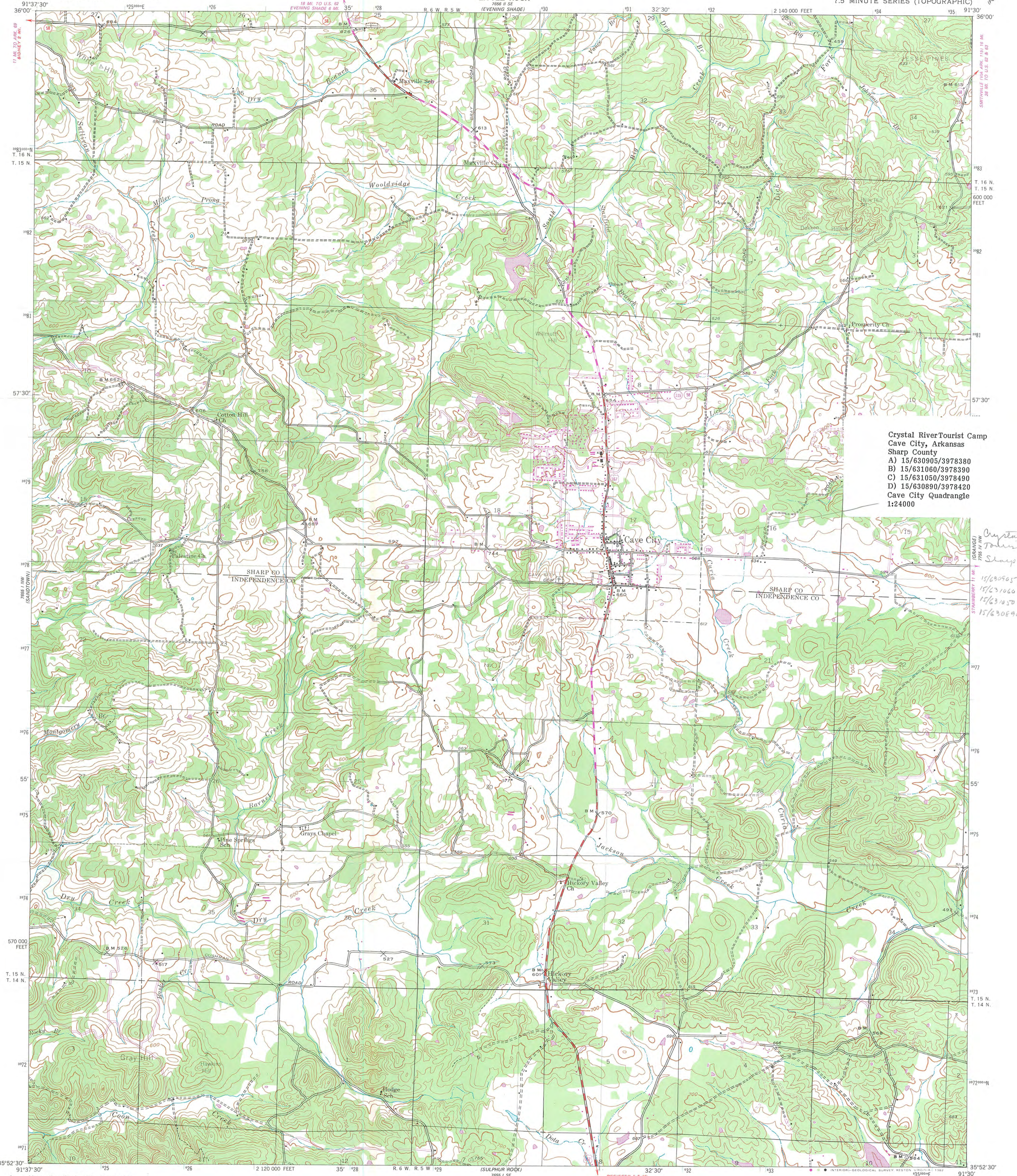
Cave City, ARKANSAS

Photographed by S. Mitchell

JUNE, 1988

Negatives ON File AT AHPP

BARBEQUE PIT DETAIL



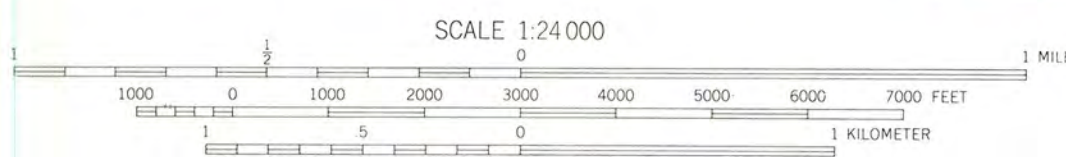
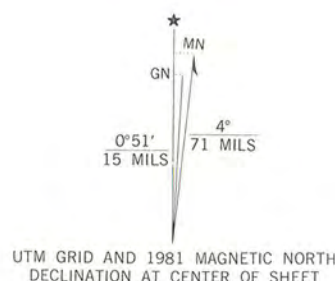
Crystal River Tourist Camp
Cave City, Arkansas
Sharp County
A) 15/630905/3978380
B) 15/631060/3978390
C) 15/631050/3978490
D) 15/630890/3978420
Cave City Quadrangle
1:24000

Crystal River
Tourist Camps
Sharp Co. Ark.
15/630905/3978380
15/631060/3978390
15/631050/3978490
15/630890/3978420

Mapped, edited, and published by
the Geological Survey 1942-43

Projection and 10,000-foot grid ticks: Arkansas coordinate
system, north zone (Lambert conformal conic)
1000-meter Universal Transverse Mercator grid ticks,
zone 15, shown in blue
To place on the predicted North American Datum 1983
move the projection lines 5 meters south and
12 meters east as shown by dashed corner ticks

Revisions shown in purple compiled from aerial photographs taken
1980. Map edited 1981. This information not field checked



CONTOUR INTERVAL 20 FEET
NATIONAL GEODETIC VERTICAL DATUM OF 1929

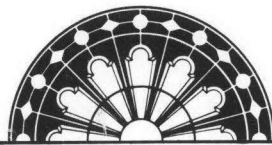


ROAD CLASSIFICATION
Primary highway, hard surface
Secondary highway, hard surface
Light duty road, hard or improved surface
Unimproved road
Interstate Route
U. S. Route
State Route

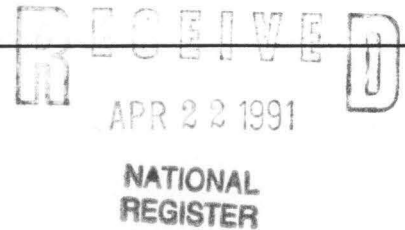
CAVE CITY, ARK.
N3552.5-W91307.5

1943
PHOTOREVISED 1981
DMA 7655 1 NE-SERIES V884

FOR SALE BY U. S. GEOLOGICAL SURVEY, DENVER, COLORADO 80225 OR RESTON, VIRGINIA 22092
AND ARKANSAS GEOLOGICAL COMMISSION, LITTLE ROCK, ARKANSAS 72204
A FOLDER DESCRIBING TOPOGRAPHIC MAPS AND SYMBOLS IS AVAILABLE ON REQUEST



ARKANSAS
HISTORIC
PRESERVATION
PROGRAM



April 18, 1991

Carol D. Shull
Chief of Registration
United States Department of the Interior
National Register of Historic Places
National Park Service
1100 "L" Street, NW
Washington, DC 20240

RE: Crystal River Tourist Camp
Cave City - Sharp County, Arkansas

Dear Carol:

We are enclosing for your review the nomination of the above referenced property. The Arkansas Historic Preservation Program has complied with all applicable nominating procedures and notification requirements in the nomination process.

Thank you for your consideration in this matter.

Sincerely,

Cathy Buford
State Historic Preservation Officer

CB:kg

Enclosures

