

Alabama Historical Commission

DEC 28 1989

JUN 27 1989

RECEIVED

United States Department of the Interior National Park Service

National Register of Historic Places Registration Form

This form is for use in nominating or requesting determinations of eligibility for individual properties or districts. See instructions in Guidelines for Completing National Register Forms (National Register Bulletin 16). Complete each item by marking "x" in the appropriate box or by entering the requested information. If an item does not apply to the property being documented, enter "N/A" for "not applicable." For functions, styles, materials, and areas of significance, enter only the categories and subcategories listed in the instructions. For additional space use continuation sheets (Form 10-900a). Type all entries.

1. Name of Property

historic name Thompson, N. Q. and Virginia M., House
other names/site number

2. Location

street & number 105 Le Baron
city, town Citronelle
state Alabama code AL county Mobile code 097 zip code 36522

3. Classification

Ownership of Property: private (checked)
Category of Property: building(s) (checked)
Number of Resources within Property: Contributing 1, Noncontributing N/A buildings, Total 1

4. State/Federal Agency Certification

As the designated authority under the National Historic Preservation Act of 1966, as amended, I hereby certify that this nomination request for determination of eligibility meets the documentation standards for registering properties in the National Register of Historic Places and meets the procedural and professional requirements set forth in 36 CFR Part 60. In my opinion, the property meets (checked) does not meet the National Register criteria. See continuation sheet.

In my opinion, the property meets (checked) does not meet the National Register criteria. See continuation sheet.

5. National Park Service Certification

I, hereby, certify that this property is:
entered in the National Register (checked)
determined eligible for the National Register
determined not eligible for the National Register
removed from the National Register
other, (explain:)

Entered in the National Register
Signature of the Keeper
Date of Action 1/25/90

6. Function or Use

Historic Functions (enter categories from instructions)

Domestic / Single Dwelling

Current Functions (enter categories from instructions)

Domestic / Single Dwelling

7. Description

Architectural Classification

(enter categories from instructions)

Classical Revival

Materials (enter categories from instructions)

foundation Brickwalls Weatherboard

roof Asbestosother

Describe present and historic physical appearance.

This house is the only example of the grand Neo-Classic in Citronelle and is one of the finest examples of that style in Mobile County. Set back on a very large lot, the house is hidden from the front by tall plantings except at the entrance to the drive, which forms, a circle leading to the front door.

Central steps lead to the monumental portico protecting the central section of the wrap around porch. A pair of unfluted columns on high bases are sited to either side with single, corresponding, attached pilasters. Oversized capitals, which give the appearance of being a continuation of the shaft, are decorated with an acanthus leaf motif. These support the pedimented entablature. The frieze contains a combination of decorative elements consisting of swags with delicate drops between and a ribbon above. There is a dentil moulding at the cornice which surrounds the entire house and follows the rake of the portico's pediment. The pediment is blind but contains a paneled circular decoration.

The slab porch wraps around the right side of the house where it meets a flat roofed, wood decked porch. This porch surrounds and extends past the two story side bay. The second story of the bay was originally balustraded, but this is now missing. However, the first story balustrade is present along with unfluted Corinthian columns on high impost blocks. Several of the capitals are missing.

The rear contains a one story, centered, inset porch. This porch forms an ell with the recessed porch of the one story, attached kitchen wing. The left side is relatively simple but has a two story bay. A doorway in this leads to the uncovered, slab, wrap around porch from the front of the house. The house is covered in a series of low hip roofs interrupted only by a number of brick interior chimneys.

The central doorway is quite ornate. The centered, lit door is flanked by large, single light sidelights. These are separated by attached Corinthian colonnettes on paneled bases with duplicates at either side, framing the whole doorway. These colonnettes support an unusual entablature with a dentil moulding, a centered, dentiled, circular panel and a pommel to either side. Above at the second story is a triple casement window.

INTERIOR: The front door leads into the central hall from which pocket doors lead into the front rooms on either side. To the rear, a large open screen divides the front entry hall from the elegant, symmetrical divided stairway. The screen consists of Corinthian columns and pilasters on low, paneled walls framing the centered walk through. These columns support a decorative beam. The stairway has square, paneled newels and classically turned balusters. Behind the screen, single, transomed doors lead into rooms on either side; a third single door leads into the back hall.

**United States Department of the Interior
National Park Service**

**National Register of Historic Places
Continuation Sheet**

Section number 7 Page 1

The interior woodwork is nicely detailed. Of particular interest are the mantels (several with overmantels); the circular, second story stair balustrade; and the dining room mouldings.

The first floor contains five rooms, the central hall, the rear hall and the attached kitchen. The second floor has five bedrooms, a pressing room with large closets on the front, two baths and a steep, narrow rear staircase to the first floor.

The public rooms and most of the bedrooms show a high style attention to detail. Some of the elements, such as the capitals of the portico show a slight naivete in ornament and proportions. The house does however, rank as one of the finest buildings in Citronelle.

8. Statement of Significance

Certifying official has considered the significance of this property in relation to other properties:

nationally statewide locally

Applicable National Register Criteria A B C D

Criteria Considerations (Exceptions) A B C D E F G

Areas of Significance (enter categories from instructions)

Architecture

Period of Significance

1905

Significant Dates

1905

Cultural Affiliation

N/A

Significant Person N/A

Architect/Builder
George Tyrrell

State significance of property, and justify criteria, criteria considerations, and areas and periods of significance noted above.

CRITERION C: ARCHITECTURE

The house located at 105 Le Baron is the finest example of Neo-Classic architecture in Citronelle and one of the best in the county outside the City of Mobile. Built near the center of town it has served as a focal point of grand architecture since its construction.

Historic Context

This house is unique in Citronelle. Though other grand houses exist in the community, this is the only one of its importance in the Neo-Classic style. George Tyrrell, the contractor/builder, was from Illinois where his parents had immigrated from England. Tyrrell was probably responsible for several other buildings in Citronelle including 315 & 319 State and 107 Union, all of which were influenced by Victorian decoration and plans.

To find the origins of 105 Le Baron one should look towards the owners N. Q. Thompson and his wife Virginia Macon Thompson. Unlike many of the important homeowners in the area, the Thompsons were from the South. He was at least a second generation Mississippian, and Virginia was born in Alabama with her parents from Virginia and Mississippi. As successful Southerners in a town of Midwesterners it is not surprising that the Thompsons chose the most modern house style available which coincided with the contemporary romanticized version of the glories of the Old South.

See continuation sheet

9. Major Bibliographical References

"All Roads Lead to Citronelle. From The Citronelle Call. Citronelle, AL: January 14, 1902.
Barnett, Cora Chastang. "Citronelle, Now and Then, 1811-1971". No publication information.
Probate Records, Mobile County. Judge of Probate Records Office, Mobile, Alabama.
Tax Records, Mobile County. Mobile County Tax Collector's Office, Mobile, Alabama.
United State Census Records, Mobile County, Alabama. 1900-1910.

See continuation sheet

Previous documentation on file (NPS):

- preliminary determination of individual listing (36 CFR 67) has been requested
- previously listed in the National Register
- previously determined eligible by the National Register
- designated a National Historic Landmark
- recorded by Historic American Buildings Survey # _____
- recorded by Historic American Engineering Record # _____

Primary location of additional data:

- State historic preservation office
- Other State agency
- Federal agency
- Local government
- University
- Other

Specify repository:

Mobile Historic Development Commission

10. Geographical Data

Acreage of property 2.9 Ac.

UTM References

A

1	6
---	---

3	8	2	8	4	0
---	---	---	---	---	---

3	4	4	0	5	6	0
---	---	---	---	---	---	---

Zone Easting Northing

B

--	--	--	--	--	--	--	--

--	--	--	--	--	--	--	--

--	--	--	--	--	--	--	--

Zone Easting Northing

C

--	--	--	--	--	--	--	--

--	--	--	--	--	--	--	--

--	--	--	--	--	--	--	--

See continuation sheet

Verbal Boundary Description

Lots 7, 8, 9 and 10 in Block 15 of the Town of Citronelle.
See line drawn on attached map.

See continuation sheet

Boundary Justification

The boundary includes the four subdivision lots that have historically been associated with the property.

See continuation sheet

11. Form Prepared By

name/title Devereaux Bemis/Architectural Historian; Steven M. Kay/AHC Reviewer
organization Mobile Historic Development Commission date June 23, 1989
street & number P. O. Box 1827 telephone (205)438-7281
city or town Mobile state Alabama zip code 36633

United States Department of the Interior
National Park Service

National Register of Historic Places
Continuation Sheet

Section number 8 Page 1

* * * * *

Mr. N. Q. Thompson was the proprietor of Citronelle's largest mercantile store, with more floor space devoted to merchandise and foodstuffs than any other businessman in the city. In addition, he was a major landowner and had numerous head of cattle. He dealt extensively in turpentine and rosin with several stills including one in the town of Citronelle. The records indicate that Mr. Thompson died about 1903 and that his family then began work or continued the work he began on the house. Doubtless, however, it was due to his successful business ventures that his heirs were able to build such an elaborate home.

Integrity

The Thompson House at 105 Le Baron retains its essential integrity. Though generally well maintained there have been some changes to the porch and some repairs are needed as pointed out in the description. The interior is in virtually pristine condition except in two rooms: the dining room ceiling has been covered with acoustical tile and the downstairs back bedroom has had a bath installed. Even with these modifications, the house maintains its exterior monumentality and grandeur and its interior elegance.

**United States Department of the Interior
National Park Service**

**National Register of Historic Places
Continuation Sheet**

Section number photo-
graphs Page 1

PHOTO LOG

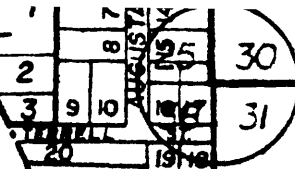
Information in items 1 - 5 is the same for all the photographs listed.

1. Thompson, N. Q. and Virginia M., House
2. Citronelle, Mobile County, Alabama
3. Devereaux Bemis, photographer
4. August 1986
5. Mobile Historic Development Commission Negative File

Photo # Description (Roll/Frame)

1. Facade, Camera facing N (120/21)
2. General view with E side, Camera facing NW (120/24)
3. Rear, Camera facing S (120/26)
4. General view with W side, Camera facing SE (120/28)
5. Central hall, Camera facing N (120/31)
6. Stairway balustrade on second floor, Camera facing S (121/7)
7. Mantel in SE room, Camera facing NE (120/34)
8. Fireplace in SW parlor, Camera facing NW (121/2)
9. Fireplace in SW bedroom on second floor, Camera facing N (121/12)

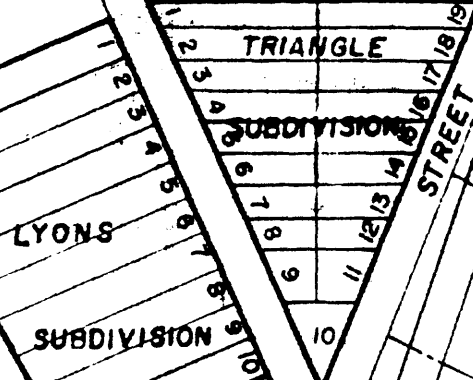
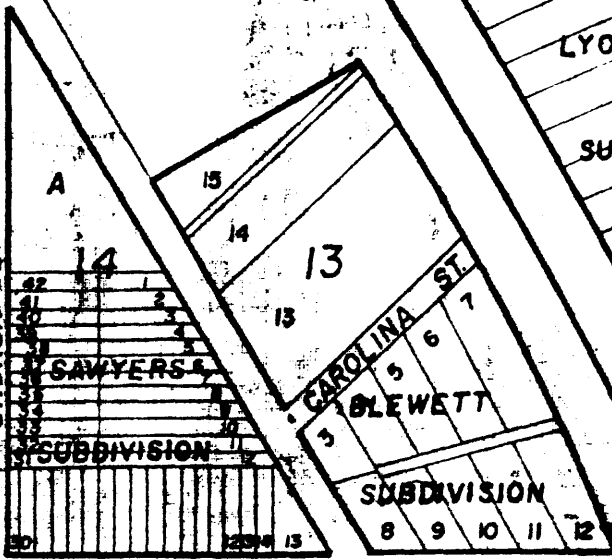
SUB. CF PART
OF BLOCK 24



10	110
11	111
12	112
13	113
14	114
15	115
16	116
17	117
18	118
19	119

20	144
21	143
22	142
23	141
24	140
25	139
26	138
27	137
28	136
29	135
30	134
31	133
32	132
33	131
34	130

CHURCH STREET

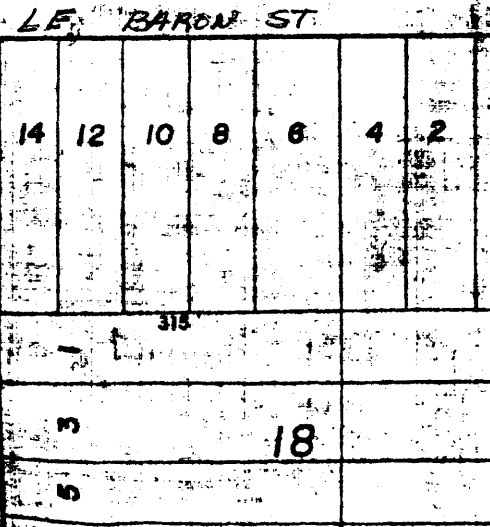
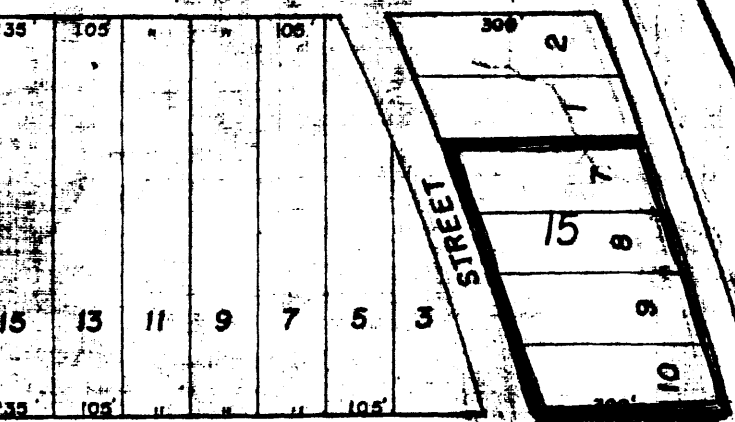


↑ NORTH

SCALE: 1" = 300'

THOMPSON HOUSE
CITRONELLE,
MOBILE CO, AL

35	135
36	105
37	105
38	105
39	105
40	105
41	105
42	105
43	105
44	105
45	105
46	105
47	105
48	105
49	105
50	105



2	510'
3	510'
4	500'