



1. James Buchanan House
2910 Elm Hill Pike
Nashville, Davidson County, Tennessee
Photographer: Steve Rogers
Date: November 1983
Negative: Tennessee Historical Comm
701 Broadway, Nashville
West and south (front) elevations, facing
northeast
1 of 5



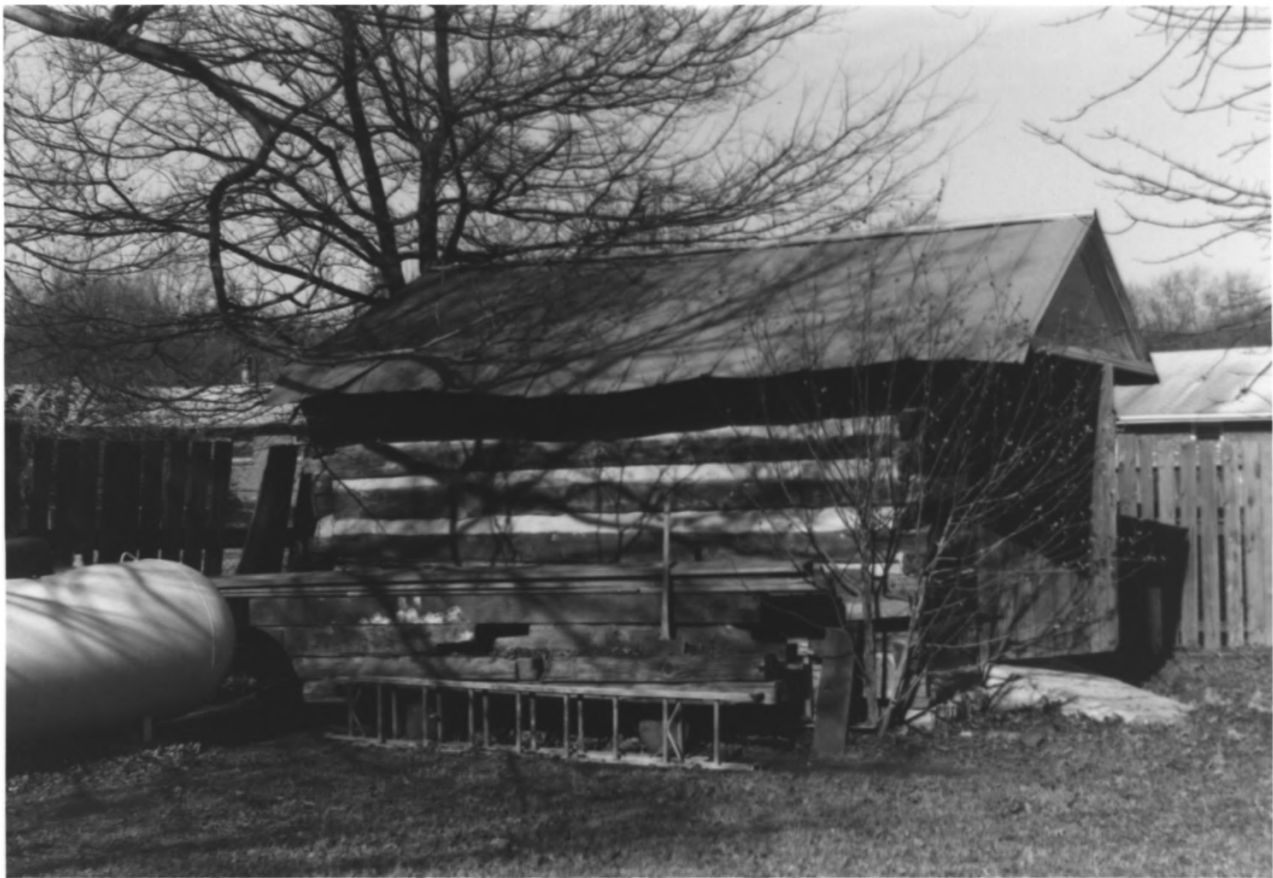
2. James Buchanan House
2910 Elm Hill Pike
Nashville, Davidson County, Tennessee
Photographer: Steve Rogers
Date: November 1983
Negative: Tennessee Historical Comm
701 Broadway, Nashville
East elevation, facing west
2 of 5



3. James Buchanan House
2910 Elm Hill Pike
Nashville, Davidson County, Tennessee
Photographer: Steve Rogers
Date: November 1983
Negative: Tennessee Historical Comm
701 Broadway, Nashville
Interior, second floor mantel
3 of 5



4. James Buchanan House
2910 Elm Hill Pike
Nashville, Davidson County, Tennessee
Photographer: Steve Rogers
Date: November 1983
Negative: Tennessee Historical Comm
701 Broadway, Nashville
Outbuilding moved from Brick Church Pike
4 of 5



5. James Buchanan House
2910 Elm Hill Pike
Nashville, Davidson County, Tennessee
Photographer: Steve Rogers
Date: November 1983
Negative: Tennessee Historical Comm
701 Broadway, Nashville
Outbuilding moved from Chandler
property on Central Pike