



Ohev Shalom Temple

Cabell County, WV

Credit: Carl F. Agster, Jr.

December 1993

NW View from 10th St. showing 1965 Addition

Negs. @ WVSHPC



Ohev Shalom Temple
Cabell County, WV
Credit: B'Nai Shalom Congregation
Sept. 1993
View from intersection of 10th Ave. & 10th St.

Negs. at WVSHPO



Ohev Shalom Temple
Cabell County, WV
Credit: B'Nai Shalom Congregation
Sept. 1993
Entrance Facade

Negs. at WVSHPO



Ohev Shalom Temple
Cabell County, WV
Credit: Carl F. Agsten, Jr.
December 1993
View of Sanctuary from Choir Loft

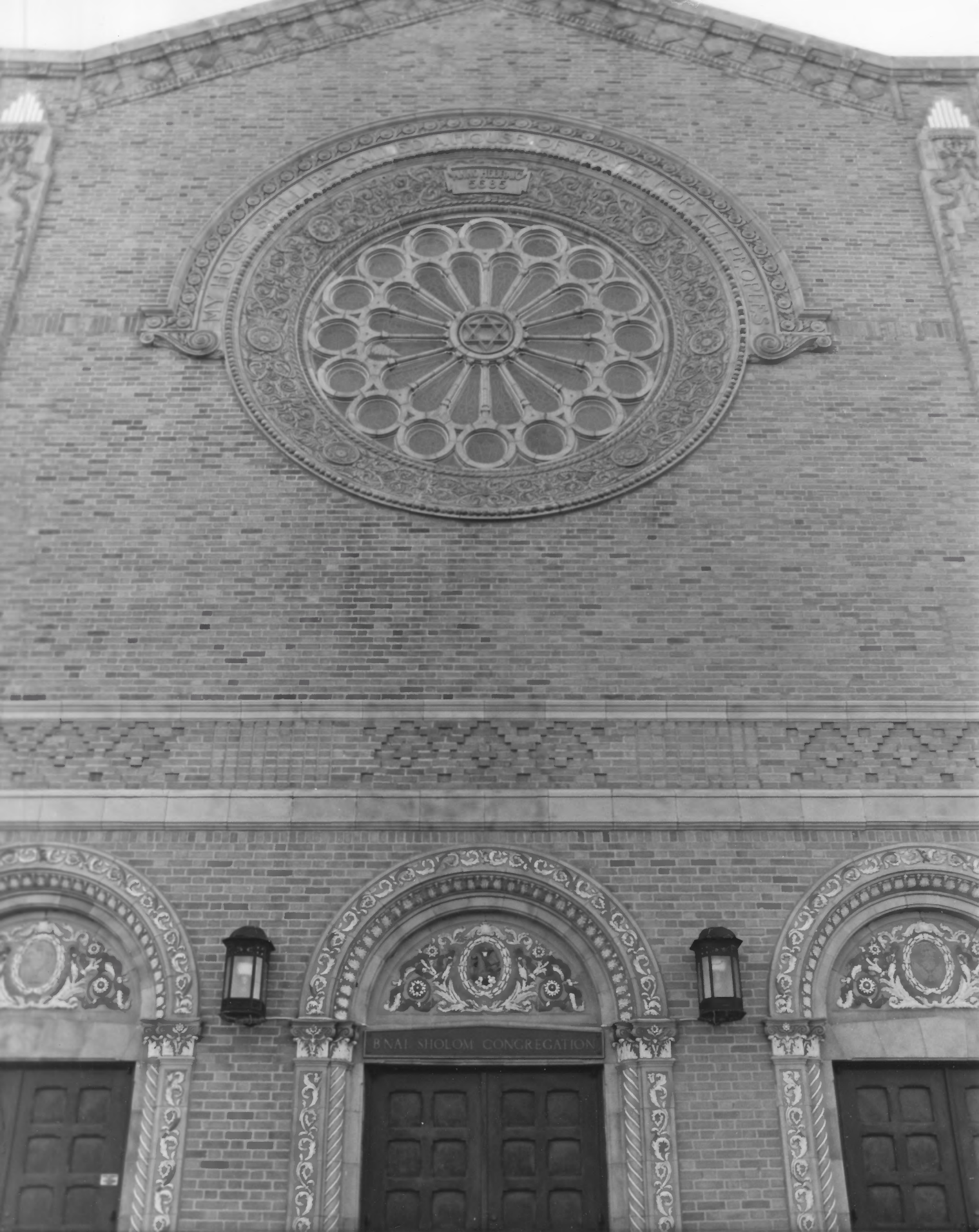
Negs. at WVSHPO



BNAI SHOLOM CONGREGATION

Ohav Shalom Temple
Cabell County, WV
Credit: Carl F. Agsten, Jr.
December 1993
Entrance Detail

Negs. at WVSHPO



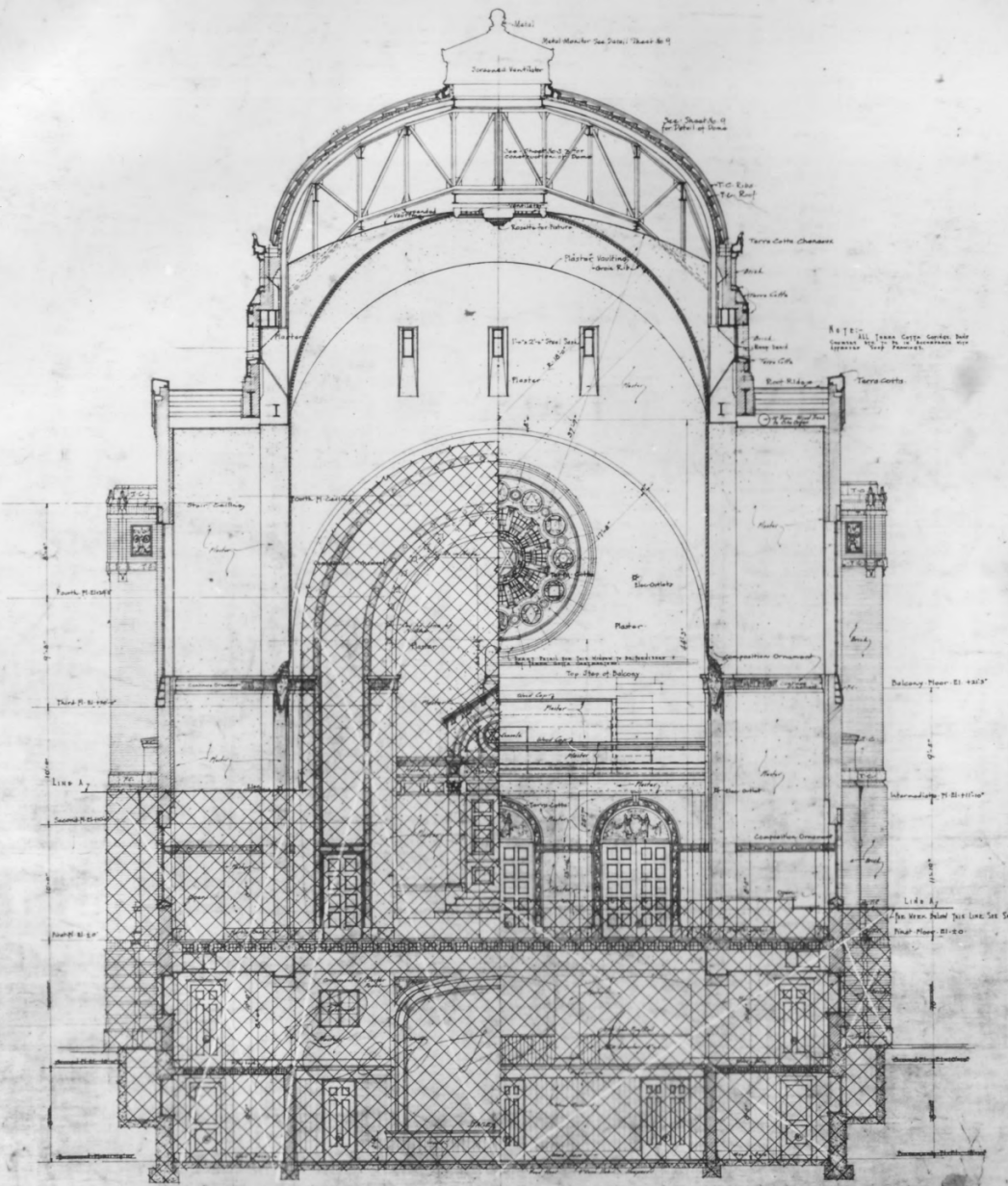
Ohev Shalom Temple
Cabell County, WV
Credit: Carl F. Agsten, Jr.
December 1993
Entrance Detail

Negs. at WVSHPO

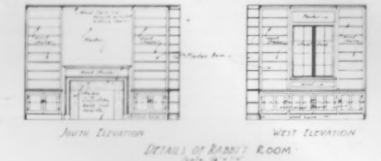


Ohev Shalom Temple
Cabell County, WV
Credit: Carl F. Agsten, Jr.
December 1993
Detail of Corner Tower

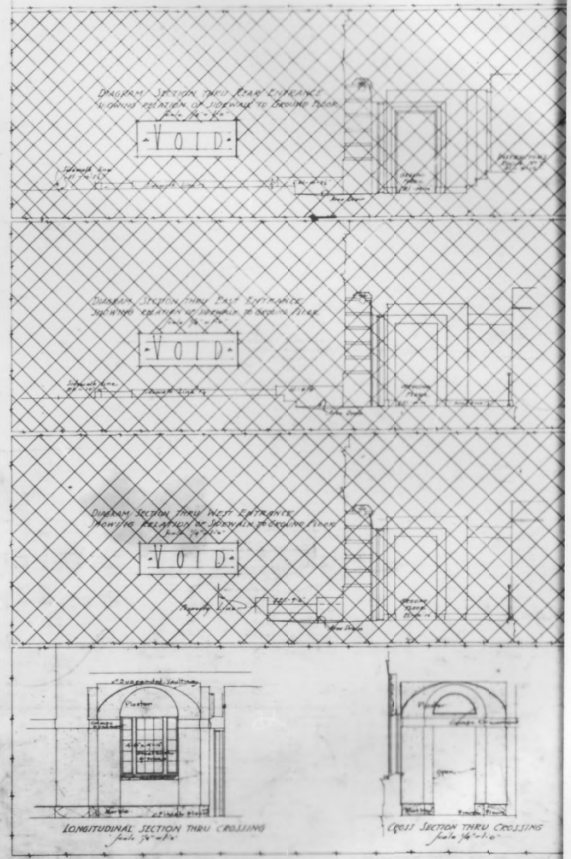
Negs. at WVSHPO



$\frac{1}{2}$ LOOKING TOWARD ARK $\frac{1}{2}$ LOOKING TOWARD ENTRANCE
Scale 1/8" = 1'-0"



DETAIL OF RABBI'S ROOM
Scale 1/8" = 1'-0"



LONGITUDINAL SECTION THRU CEILING
Scale 1/8" = 1'-0"

CROSS SECTION THRU CEILING
Scale 1/8" = 1'-0"

REVISIONS
 Made Below Line A and B
 Date: 1924
 By: [Name]
 Checked: [Name]
 Approved: [Name]

CROSS SECTION
 SYNAGOGUE
 CHEY SHOLOM
 CONGREGATION
 28 WEST AVENUE AND TENTH STREET
 BROOKLYN, N. Y.
 ARCHITECTS
 [Name] & [Name]
 150 WEST 57TH STREET
 NEW YORK, N. Y.

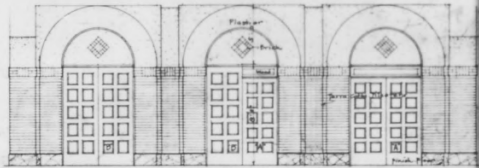
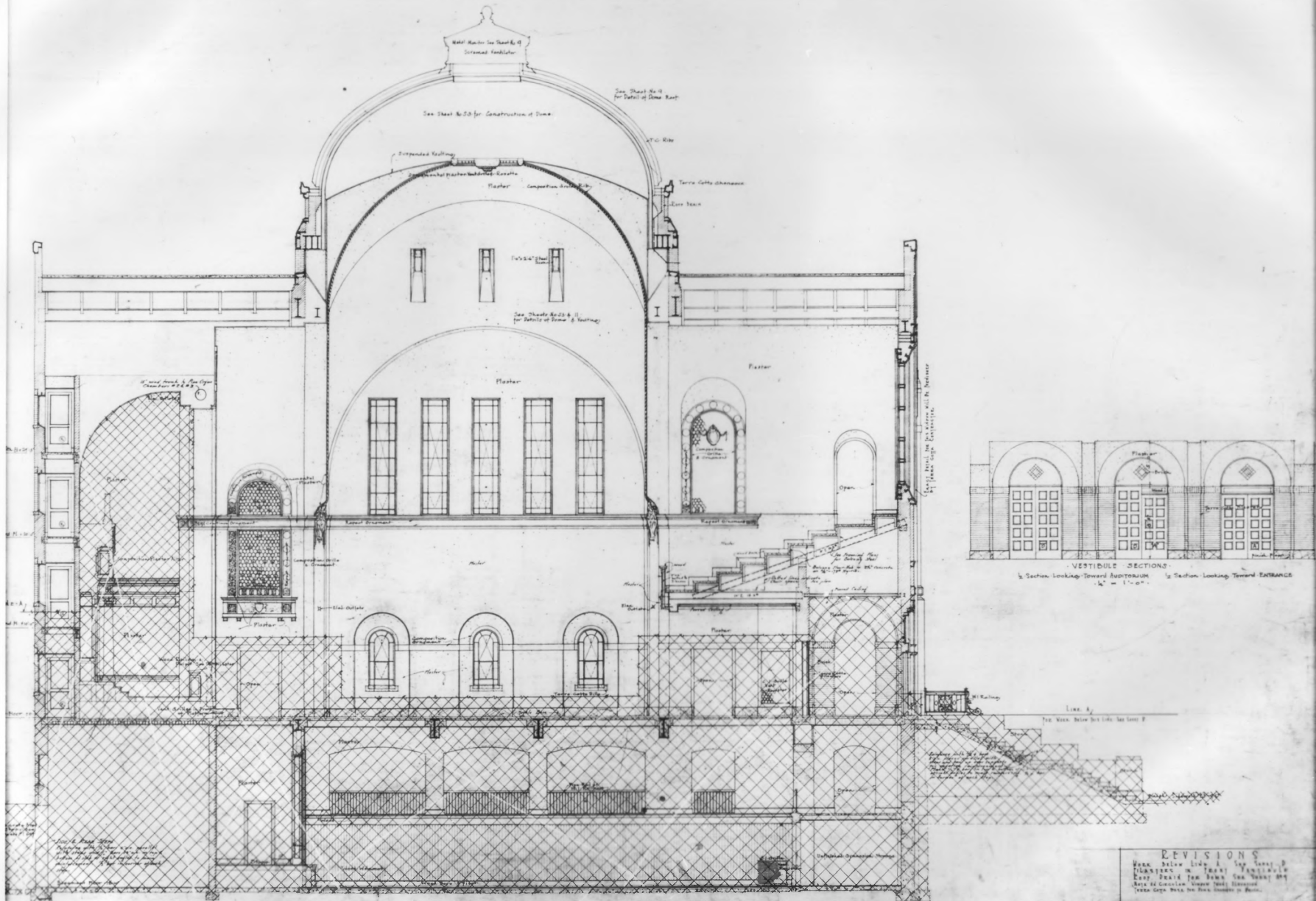
November 1924

Sheet 38

11

Ohav Shalom Temple
Cabell County, WV
Credit: WV Div. of Culture & History
January 1994
Architect's Cross Section, November 1924

Negs. at WV SHPO
Original prints: B'Nai
Shalom Congregation



LONGITUDINAL SECTION
 Scale—1/4" = 1'-0"

REVISIONS

1	Mark below line 1 - top level of
2	Flanges on base of wall below
3	Base of column - upper part removed
4	Terra Cotta base on base column in plan.

LONGITUDINAL SECTION

1924

SYNAGOGUE
 CHEY-CHOLOM-
 CONGREGATION
 2550 AVENUE J. S. TRACY STREET
 WASHINGTON DISTRICT OF COLUMBIA

PREPARED AND PUBLISHED BY
 THE ARCHITECTURAL RECORD COMPANY

38
 11

Ohev Shalom Temple
Cabell County, WV
Credit: WV Div. of Culture & History
January 1994
Architect's Longitudinal Section

Negs. at WVSHPO
Original Prints:
B'nei Shalom Congregation