

1887

P. LANE, BUILDER  
OFFICES:  
1714 LA SALLE ST. CHICAGO, ILLS.  
AND TOPEKA, KANSAS.

Walnut Creek bridge

1870-1880

photo taken by Harry Jochims on July 20, 1985  
negatives located at Kansas State Historical Society

Walrus Plaque

1 of 5



Walnut Creek Bridge

Heizer, Kansas

Larry Jochims

July 20, 1985

Kansas State Historical Society

North approach looking SW

2 of 5





Walnut Creek Bridge

Heizer, Kansas

Larry Schims

July 20, 1985

Kansas State Historical Society

North approach looking SW

3 of 5

Walnut Creek Bridge

Heizer, Kansas

Larry Jo chins

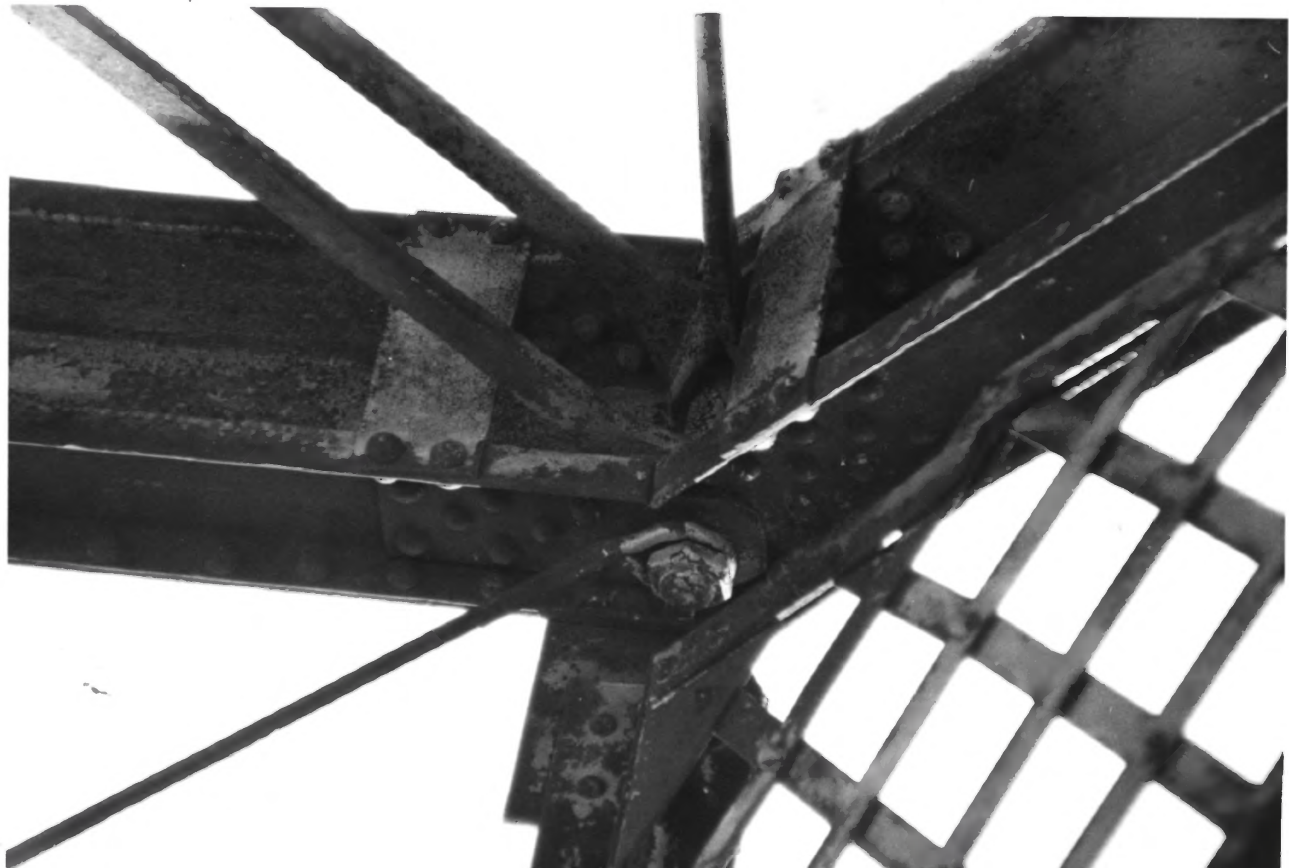
July 20, 1985

Kansas State Historical Society

north approach looking SE

4 of 5





Walnut Creek Bridge

Heizer, Kansas

Larry Jochims

July 20, 1985

Kansas State Historical Society

Pin Connection detail

5 of 5