

JUN 15 1978

Casa Grande Stone Church

Arizona

looking East

Date: 1977

Negative at Casa Grande Valley Historical
Society.

PINAL County

JAN 27 1978

#1 24



JUN 15 1978

Casa Grande Stone Church

Arizona

looking North

Date: 1977

Negative at Casa Grande Valley Historical
Society

JAN 27 1978

#2 24

Pinal County



JUN 15 1978

...

Casa Grande Stone Church

Arizona

looking West

Date: 1977

Negative at Casa Grande Valley Historical
Society

Pinal County

JAN 27 1978

#3 24



PRESBYTERIAN CHURCH, CASA GRANDE, ARIZONA 6283

JUN 15 1978

Casa Grande Stone Church
Arizona

Looking ENE

Date: 1930s?

Negative at Az State Library & Archives

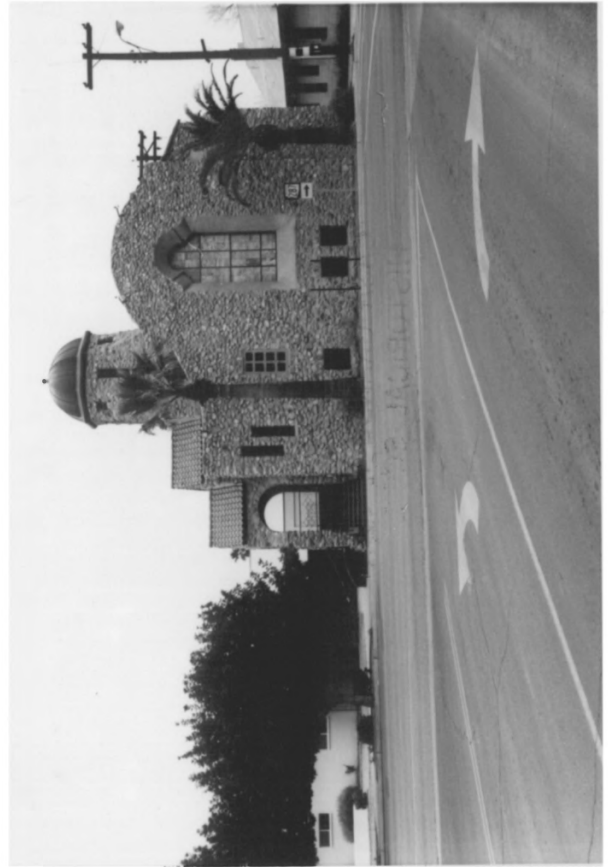
PINAL County

JAN 16 1978

#424

ARIZONA STATE HISTORIC PROPERTY INVENTORY

HISTORIC PROPERTY NAME Stone Church		COUNTY Pinal County	INVENTORY NO. CG-171
COMMON PROPERTY NAME		QUAD/COUNTY MAP	
PROPERTY LOCATION-STREET & NO. Florence Blvd. and N. Park Avenue			
CITY,TOWN/VICINITY OF Casa Grande		ASSESSOR'S PARCEL NO. 506-07-02908	
OWNER OF PROPERTY Casa Grande Historical Society		PHONE 836-222	
STREET & NO./P.O. BOX Florence Blvd. and N. Park Avenue			
CITY,TOWN Casa Grande,		STATE Arizona	ZIP 85222
FORM PREPARED BY Janus Associates Inc.		DATE 9/82	
STREET & NO./P.O. BOX 2121 S. Priest Suite 127		PHONE 967-7117	
CITY,TOWN Tempe,		STATE Arizona	ZIP 85282
PHOTO BY Casa Grande Survey Volunteer		DATE 1975	
VIEW looking north			
HISTORIC USE Presbyterian Church			
PRESENT USE museum		ACREAGE less/one	
ARCHITECT/BUILDER Robert Orr/Architect Mike Sullivan/Contractor			
CONSTRUCTION/MODIFICATION DATES Built 1927/Modified 1946-1956			



PHYSICAL DESCRIPTION

Located on the northeast corner of Florence Blvd. and Park Avenue, the Stone Church joined an existing Sunday School Building to form an "L". The building has a full raised basement. The rectangular plan one-story building has walls of local field stone and a gabled roof of red tile. On the southwest corner, there is a cement porch with stone arches and an arched doorway with double doors leading to a projecting vestibule. Stepped gables over the entry and vestibule are at right angles to the main roof. Over the vestibule is an octagonal belfry with a copper dome. The east and west sides of the building are broken by stone buttresses and three over one double-hung windows with flat arches. The south end of the building, facing the street, has a curved parapet and a stained glass window with a belled arch.

STATEMENT OF SIGNIFICANCE/HISTORY

The Casa Grande Stone Church, listed on the National Register of Historic Places, was built in 1927 through the efforts of a growing Presbyterian congregation. The stone church is one of two remaining large cobble buildings constructed in Casa Grande. The church was constructed by a skilled local stone mason, Mike Sullivan, and designed by Los Angeles Architect, Robert Orr. The sanctuary stained glass window was added in 1952. The expanding congregation abandoned the church in 1969 and it served as a mortuary for a few years. Its attractive and distinctive architecture and central location moved the Casa Grande Valley Historical Society to acquire the building as a museum in 1977. It remains as a landmark in Casa Grande and continues to serve the community.

SOURCES OF ABOVE INFORMATION/BIBLIOGRAPHY

National Register of Historic Places nomination, 1978, State
Historic Preservation Office

GEOGRAPHICAL DATA/LEGAL DESCRIPTION/VERBAL BOUNDARY DESCRIPTION

Lots 6, 7, 8, 9, 10, Block 3, First Addition to Casa Grande

USGS QUAD - CASA GRANDE WEST

UTM references on continuation sheet

GENERAL COMMENTS/FUTURE PLANS FOR PROPERTY