



Millen House

(Raintree House)

Monroe County, Indiana

Katherine Roberts

February 24, 2003

OAH, 112 N. Bryan, Bloomington

camera facing north, front  
of house

PHOTO 1



Millen House

(Raintree House)

Monroe County, Indiana

Katherine Roberts

February 24, 2003

0A4, 112 N. Bryan, Bloomington

Camera facing south,  
back of house

PHOTO 2



Millen House  
(Raintree House)  
Monroe County, Indiana  
Katherine Roberts  
February 24, 2003  
OAH, 112 N. Bryan, Bloomington  
camera facing southeast,  
gable end PHOTO 3





Millen House  
(Raintree House)  
Marroe County, Indiana  
Katherine Roberts  
February 24, 2003  
OAH, 112 N. Bryan, Bloomington  
camera facing northwest,  
gable end

PHOTO 4





Millen House

(Raintree House)

Monroe County, Indiana

Katherine Roberts

February 24, 2003

OAH, 112 N. Bryan, Bloomington

camera facing northeast,

portico

PHOTO 5



Millen House  
(Raintree House)  
Monroe County, Indiana  
Katherine Roberts  
February 24, 2003  
OAH, 112 N. Bryan, Bloomington  
camera facing north,  
front door and surrounds

PHOTO 6



Millen House  
(Raintree House)  
Monroe County, Indiana  
Katherine Roberts  
February 24, 2003  
OAH, 112 N. Bryan,  
Bloomington  
camera facing northwest,  
garage

PHOTO 7







Millen House  
(Raintree House)  
Monroe County, Indiana  
Katherine Roberts  
February 24, 2003  
OAH, 112 N. Bryan,  
Bloomington  
camera facing northeast,  
cellar stairwell cover  
and backyard

PHOTO 8



Millen House  
(Raintree House)  
Monroe County, Indiana  
Katherine Roberts  
February 24, 2003  
OAH, 112 N. Bryan,  
Bloomington  
camera facing southeast,  
driveway and parking

PHOTO 9



Millen House

(Raintree House)

Monroe County, Indiana

Katherine Roberts

February 24, 2003

OAH, 112 N. Bryan,

Bloomington

camera facing south,

front yard

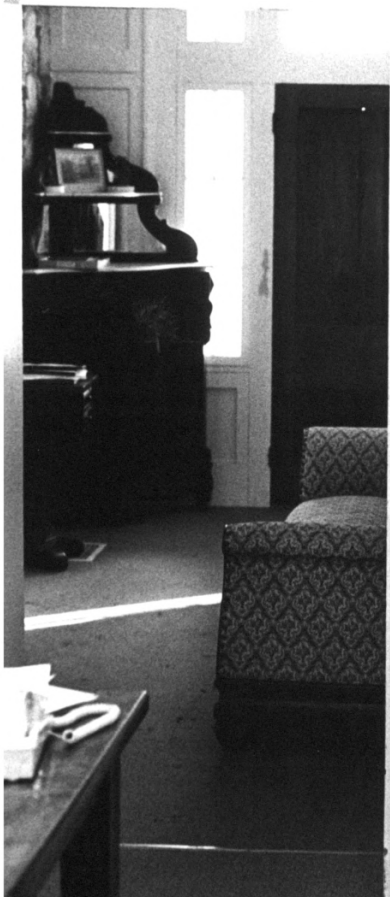
PHOTO 10



Millen House  
(Raintree House)  
Monroe County, Indiana  
Katherine Roberts  
February 24, 2003  
OAH, 112N. Bryan, Bloomington  
camera facing north,  
central passage, first  
floor

PHOTO 11





Millen House  
(Raintree House)  
Monroe County, Indiana  
Katherine Roberts

February 24, 2003

OAH, 112 N. Bryan, Bloomington

camera facing south,  
central passage,  
cellar door - first floor

PHOTO 12



Millen House  
(Raintree House)  
Monroe County, Indiana

Katherine Roberts

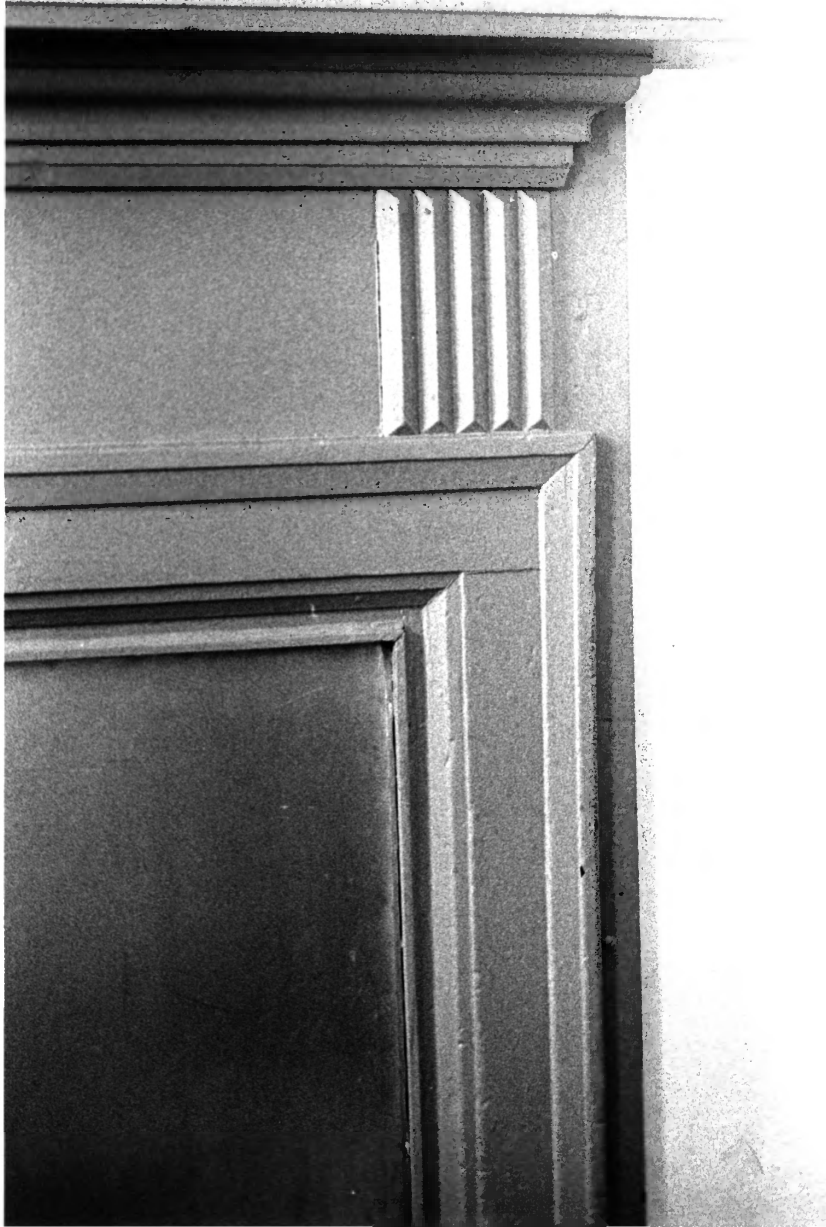
February 24, 2003

OAH, 112 N. Bryan,

Bloomington

camera facing southeast,  
corner cabinets downstairs  
southwest room

PHOTO 13



Millen House  
(Raintree House)  
Monroe County, Indiana  
Katherine Roberts  
February 24, 2003  
OAH, 112 N. Bryan, Bloomington  
camera facing west,  
mantel detail, first floor  
southwest room

PHOTO 14

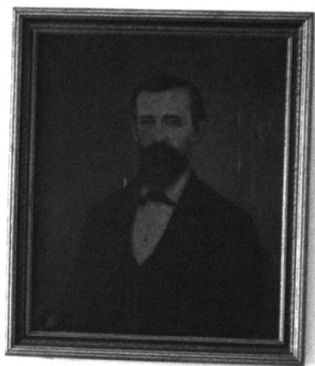




Millen House  
(Raintree House)  
Monroe County, Indiana  
Katherine Roberts  
February 24, 2003  
OAH, 112 N. Bryan,  
Bloomington

camera facing southeast,  
molding/embrasure detail,  
first floor, southeast room

PHOTO 15



Millen House

(Raintree House)

Monroe County, Indiana

Katherine Roberts

February 24, 2003

OAH, 112 N. Bryan, Bloomington

camera facing east, mantel,

corner press and portrait,  
first floor, northeast

room

PHOTO 16



Millen House  
(Raintree House)  
Monroe County, Indiana  
Matherine Roberts

February 24, 2003

OAH, 112 N. Bryan,

Bloomington

camera facing east,  
mantelpiece detail,  
second floor southeast  
room

PHOTO 17



Millen House  
(Raintree House)  
Monroe County, Indiana  
Katherine Roberts  
February 24, 2003

OAH, 112 N. Bryan,  
Bloomington

camera facing west,  
door and transom,  
second floor, southeast  
room

PHOTO 18





Millen House  
(Raintree House)  
Monroe County, Indiana  
Katherine Roberts  
February 24, 2003  
OAH, 112 N. Bryan, Bloomington

camera facing north,  
central passage, attic  
stairs, second floor

PHOTO 19



Millen House

(Raintree House)

Monroe County, Indiana

Katherine Roberts

February 24, 2003

OAH, 112 N. Bryan,

Bloomington

camera facing west,  
cellar fireplace, exterior  
entrance, wall of coal  
bin

PHOTO 20