

United States Department of the Interior  
National Park Service

1479  
AUG 25 1989

# National Register of Historic Places Registration Form

This form is for use in nominating or requesting determinations of eligibility for individual properties or districts. See instructions in *Guidelines for Completing National Register Forms* (National Register Bulletin 16). Complete each item by marking "x" in the appropriate box or by entering the requested information. If an item does not apply to the property being documented, enter "N/A" for "not applicable." For functions, styles, materials, and areas of significance, enter only the categories and subcategories listed in the instructions. For additional space use continuation sheets (Form 10-900a). Type all entries.

### 1. Name of Property

historic name Old WRUF Radio Station  
other names/site number 8AL02554

### 2. Location

street & number Museum Road and Newell Drive N/A not for publication  
city, town Gainesville N/A vicinity  
state Florida code FL county Alachua code 001 zip code 32611

### 3. Classification

<b>Ownership of Property</b>	<b>Category of Property</b>	<b>Number of Resources within Property</b>	
<input type="checkbox"/> private	<input checked="" type="checkbox"/> building(s)	<b>Contributing</b>	<b>Noncontributing</b>
<input type="checkbox"/> public-local	<input type="checkbox"/> district	<u>1</u>	<u>0</u> buildings
<input checked="" type="checkbox"/> public-State	<input type="checkbox"/> site	_____	_____ sites
<input type="checkbox"/> public-Federal	<input type="checkbox"/> structure	_____	<u>1</u> structures
	<input type="checkbox"/> object	_____	_____ objects
		<u>1</u>	<u>1</u> Total

Name of related multiple property listing:  
N/A

Number of contributing resources previously listed in the National Register 0

### 4. State/Federal Agency Certification

As the designated authority under the National Historic Preservation Act of 1966, as amended, I hereby certify that this  nomination  request for determination of eligibility meets the documentation standards for registering properties in the National Register of Historic Places and meets the procedural and professional requirements set forth in 36 CFR Part 60. In my opinion, the property  meets  does not meet the National Register criteria.  See continuation sheet.

George W. Percy 8/21/89  
Signature of certifying official Date  
George W. Percy, State Historic Preservation Officer  
State or Federal agency and bureau

In my opinion, the property  meets  does not meet the National Register criteria.  See continuation sheet.

\_\_\_\_\_  
Signature of commenting or other official Date  
\_\_\_\_\_  
State or Federal agency and bureau

### 5. National Park Service Certification

I, hereby, certify that this property is:

entered in the National Register.  
 See continuation sheet.

determined eligible for the National Register.  See continuation sheet.

determined not eligible for the National Register.

removed from the National Register.

other, (explain): \_\_\_\_\_

Alton Byers 9/21/89  
Entered in the National Register Date of Action

fu  
Signature of the Keeper Date of Action

**6. Function or Use**

Historic Functions (enter categories from instructions)

~~INDUSTRY-Communications Facility~~  
EDUCATION

Current Functions (enter categories from instructions)

~~GOVERNMENT-Correctional Facility~~

**7. Description**

Architectural Classification

(enter categories from instructions)

TUDOR REVIVAL

Materials (enter categories from instructions)

foundation concrete

walls brick

roof asbestos shingles

other wood, stucco

Describe present and historic physical appearance.

See continuation sheet

**8. Statement of Significance**

Certifying official has considered the significance of this property in relation to other properties:

nationally     statewide     locally

Applicable National Register Criteria     A     B     C     D

Criteria Considerations (Exceptions)     A     B     C     D     E     F     G

Areas of Significance (enter categories from instructions)

EDUCATION  
COMMUNICATIONS  
ARCHITECTURE

Period of Significance

1928-1939

Significant Dates

1928

Cultural Affiliation

N/A

Significant Person

N/A

Architect/Builder

Weaver, Rudolph  
T.H. Crisp and Company

State significance of property, and justify criteria, criteria considerations, and areas and periods of significance noted above.

See continuation sheet

See continuation sheet

**9. Major Bibliographical References**

See continuation sheet

**Previous documentation on file (NPS):**

- preliminary determination of individual listing (36 CFR 67) has been requested
- previously listed in the National Register
- previously determined eligible by the National Register
- designated a National Historic Landmark
- recorded by Historic American Buildings Survey # \_\_\_\_\_
- recorded by Historic American Engineering Record # \_\_\_\_\_

See continuation sheet

**Primary location of additional data:**

- State historic preservation office
- Other State agency
- Federal agency
- Local government
- University
- Other

Specify repository: \_\_\_\_\_

**10. Geographical Data**

Acreeage of property less than one acre

**UTM References**

A 

17
----

3	69	9	75
---	----	---	----

32	8	09	45
----	---	----	----

  
 Zone Easting Northing

C 

--	--	--	--	--	--	--	--

B 

--	--	--	--	--	--	--	--

--	--	--	--	--	--	--	--

--	--	--	--	--	--	--	--

  
 Zone Easting Northing

D 

--	--	--	--	--	--	--	--

See continuation sheet

**Verbal Boundary Description**

The site is on the main campus of the University of Florida. The property is bounded by Museum Road on the north, and by Newell Drive on the west. To the south and east are other buildings located on the campus.

See continuation sheet

**Boundary Justification**

The boundary includes the legal description of the entire city lot that has been historically associated with the property.

See continuation sheet

**11. Form Prepared By**

name/title R. Douglas Walton-Historic Site Specialist/Murray D. Laurie  
 organization FL Dept of State-Bureau of Hist. Pres. date August 18, 1989  
 street & number 500 S. Bronough Street telephone (904) 487-2333  
 city or town Tallahassee state Florida zip code 32399-0250

United States Department of the Interior  
National Park Service

National Register of Historic Places  
Continuation Sheet

Section number 7 Page 1

Old WRUF Radio Station

---

Summary:

The Old WRUF Radio Station (now the University Police Station) is a one and a half story, brick frame, Tudor Revival building, with a steep-hipped, cross-gabled roof. Designed in 1928 by Rudolph Weaver, the structure has remained essentially unchanged, and is a worthy example of the Tudor Revival style. It is significant through its association with both the radio industry and the field of higher education. Additionally, it is the only building of its style on the University of Florida Campus.

Setting:

The Old WRUF Radio Station is located near the intersection of Museum Road and Newell Drive, on the campus of the University of Florida, in the City of Gainesville, Alachua County, Florida. Situated on a lot less than one acre in size, the site was originally open pasture 1500 feet south of the main campus, and was enclosed by a wire cattle fence. A dirt road connected the station to the main campus. There has been considerable infill since 1928, and the building is now surrounded by other university buildings. The property has a hedge which wraps around three sides of the building, individual landscape bushes, and large oak trees at the north and south ends of the station.

EXTERIOR

The Old WRUF Radio Station is both on and off grade, and thus has both a concrete foundation and footings with a crawlspace. Its solid brick walls (in a common bond with five rows of stretchers per header row) support a steep-hipped, cross-gabled roof. The ground plan is L-shaped, with an ell to the west.

The main (east) elevation features a prominent cross gable, with a smaller overlapping brick gable on the left side of the cross gable. The main gable is clad with false half-timbering and stucco infill, and has a square ventilator at the peak. The small gable is a slightly projecting pavilion which contains the main doorway. A two step stairway leads to the doorway, which has a flush round

United States Department of the Interior  
National Park ServiceNational Register of Historic Places  
Continuation SheetSection number 7 Page 2

Old WRUF Radio Station

arched wood door, glazed with a fixed glass pane. Overhead is a 3-pane semicircular transom, surrounded by decorative brickwork.

An angle niche to the left (south) of the doorway is covered by a self-supporting galvanized metal patio roof. On the north corner of the facade is a small angle niche which is enclosed by horizontal-lapped board walls, making an enclosed utility room. (See Photos 1 and 2)

The fenestration is irregular, with all windows being double-hung wood sash. The window arrangement for the first story to the left (south) of the doorway is comprised of (from south to north), a 9/9 and one set of three 9/9's. The pattern to the right (north) of the doorway is (from south to north) three 6/6's, and a single 9/9. A set of three 9/9 windows is centered in the gable.

The north elevation (Museum Road) features a doorway on the east end. Three concrete steps lead to the doorway, which has a flush wood door glazed with a fixed glass pane. (See Photo 3) Protecting the doorway is a simple overhang roofed with asphalt shingles. To the right (west) of the doorway, centered above the three windows, is a small brick front cross gable. To the right of the westernmost window are two vertical ventilation grills extending from the eave downward to the foundation.

Fenestration consists of a small 2/2 window to the left of the doorway, and a set of three windows on the right of the doorway running (from east to west) in a 6/6, 9/9, and 6/6 arrangement. To the right (west) of the vent grills is a single 9/9 window.

The west elevation is the rear of the building, having an L-shaped ground plan, and one doorway. The doorway is on the south end and has a flush wood door glazed with a large fixed glass pane. Overhanging the door is a roof identical to the one on the north elevation. A tall, narrow, brick chimney stands just above the roof/eave junction on the left (north) end. On the extreme left end of the wall are two vertical ventilation grills identical to those on the north elevation. (See Photo 4)

United States Department of the Interior  
National Park Service

National Register of Historic Places  
Continuation Sheet

Section number 7 Page 3

Old WRUF Radio Station

---

A tall radio antenna stands just to the rear of the right-angle of the L-shaped ground plan. For additional information on the tower, see the "Exterior Alterations and Integrity" description below.

The fenestration is irregular, and the window arrangement consists of (starting to the right of the vents and running from north to south) four separate 4/4's and three 9/9's.

#### INTERIOR

The plan of the Old WRUF Radio Station featured a first floor central hall, running from front to back, with offices on both sides. A stairwell in the front (east) of the hall ascends to the attic, which contains an office, conference room, and storage space. (See Photo 5)

As designed by Weaver in 1928, the first floor of the station had a reception room, office, a transmission room, and three studios. The studios had interior windows, soundproofing, and were each a different size, one being 20 x 20 feet, one 12 x 15 feet, and one 10 x 15 feet. The attic area consisted of a record library, small studio, and a script editing room. The steeply pitched roof made it difficult to utilize the attic space to any great degree. The original interior walls were exposed brick, and the ceilings were plaster.

Usage of the building since 1928 has resulted in extensive alteration to the original interior spaces. The brick walls and plaster ceilings have been covered (except for some portions in the hallways) with simulated wood paneling and dropped ceilings. (See Photo 6) In addition, several changes in the interior partitioning have occurred, and the interior no longer retains its original character and integrity.

United States Department of the Interior  
National Park Service

National Register of Historic Places  
Continuation Sheet

Section number 7 Page 4

Old WRUF Radio Station

---

EXTERIOR ALTERATIONS AND INTEGRITY

The Old WRUF Radio Station has had two minor exterior additions and a few minor changes during its 61 year history. The additions consist of a galvanized metal patio roof attached to the south side of the east facade doorway, and enclosure of the angle niche on the northeast corner by two right angled, horizontal-lapped board walls to make an enclosed utility room. Hidden behind the board walls are a 2/2 window and an exterior door that are part of the original brick structure. If necessary, the additions could be removed without affecting the original building.

Minor changes include the conversion of a window on the east elevation gable. The 9/9 window on the one and a half story level was changed from a single to a three window set, sometime after 1929. Also, wood paneling has been extensively used on the interior for wall covering and as partitions.

While not physically a part of the station, the radio tower visible in photos 1 and 4 bears mention. The station originally broadcast its signal from two 200-foot steel towers anchored to 40 by 40 foot concrete platforms. The towers were located to the northeast of the station, about 400 feet apart. The towers were removed sometime after 1955, and the present tower (located behind the station's west elevation) is a 158-foot communications tower, quite similar to the design of the originals, used by the university police department.

The minor exterior alterations do not significantly impair the essential integrity of design, materials, and workmanship of the building itself, and the presence of the radio tower, while non-contributing, enhances the overall reflection of the station's historic character and significance as a radio broadcast facility.



United States Department of the Interior  
National Park ServiceNational Register of Historic Places  
Continuation SheetSection number 8 Page 1

Old WRUF Radio Station

Summary:

The Old WRUF Radio Station is significant under Criterion A: Industry, because of its contribution to the growth of radio as a communication medium in the state of Florida. WRUF was also important as an educational vehicle, both as a means for providing educational and agricultural information to its listeners and as a training ground for broadcasters and communications engineers.

Additionally, it is significant under Criterion C: Architecture, as a fine example of a Tudor Revival style structure which has been preserved with few external alterations. The Old WRUF Radio Station is the sole representative of the Tudor Revival style on the University of Florida campus.

Historic Context:

The University of Florida campus is one of the three original state institutions of higher learning founded by statute in 1905. The origins of state supported higher education for white students began however, in 1851, with an act to provide seminaries in East and West Florida. The East Florida school began at Gainesville in 1853 and the West Florida one at Tallahassee three years later. Four more schools were opened at different locations around the state during the next 39 years. None of these schools was adequately funded and they competed openly for what funds and students were available. As early as 1891, Governor Francis P. Fleming suggested the possibility of giving all support to one state university, or at least creating a board of regents to coordinate the work of the existing institutions. Both of these ideas were accomplished to some degree by the Buckman Act in 1905.

State supported higher education for Afro-Americans began with the provision of the state constitution of 1883 for two normal schools to train white and black teachers. The State Normal School for Teachers opened in Tallahassee in 1887. In 1890, the State Board of Education used funds provided by the Morrill Land Grant Act, passed by the U.S. Congress in 1862, to create the normal school for negroes at Tallahassee and an agricultural college for whites at Lake City.

United States Department of the Interior  
National Park ServiceNational Register of Historic Places  
Continuation SheetSection number 8 Page 2

Old WRUF Radio Station

With the passage of the Buckman Act under the progressive administration of Governor Napoleon B. Broward (January 1905-January 1909), a major reorganization of the state's higher education system was achieved by consolidating the seven state supported schools into just three: one for white men, one for white women, and one for negroes. A comprehensive school for the deaf, dumb, and blind was also established. A board of control was authorized to coordinate and supervise the four institutions. From this beginning grew the modern University of Florida at Gainesville, all male until 1947; Florida State University at Tallahassee, which was Florida State College for Women until 1947; and Florida A & M University for negroes (which was the Florida Agricultural and Mechanical College until 1953), until it was integrated in the 1960's.

The Buckman Act could not immediately bring Florida's new colleges into being. Due to the generally dilapidated condition of the old East Florida Seminary buildings in Gainesville, it was decided to use the existing facilities of the defunct Florida Agricultural College at Lake City for the 1905-1906 term. In 1905, the Board of Control hired an architectural firm to design the buildings for the new Gainesville campus, using the "Tudor Gothic" (now commonly referred to as "Collegiate Gothic") style. By the Fall of 1906, the University of Florida at Gainesville had three Collegiate Gothic buildings ready for occupancy.

The progressive era in Florida education continued until 1929, and was a period of rapid growth for the state's three institutions of higher learning, reflected in the expansion of the campuses and the construction of new buildings at the University of Florida and the Florida State College for Women.

## HISTORIC SIGNIFICANCE, CRITERION A

In 1925, the plans for constructing a radio station on the Gainesville campus of the University of Florida received financial backing from the state legislature. On June 8th, an Act of the Legislature was approved which provided for the installation of a state owned radio station in

United States Department of the Interior  
National Park Service

National Register of Historic Places  
Continuation Sheet

Section number 8 Page 3

Old WRUF Radio Station

---

Gainesville, to be connected by remote control to the State Capitol and the Florida State College for Women at Tallahassee. Fifty thousand dollars was appropriated to install the five kilowatt power station, with broadcast time to be divided between the three institutions. The Act stated that the purpose of the radio station was to promote better government in the state, and to disseminate educational and agricultural information. The call letters of the station were to be "WFLA", an acronym for the station's slogan "Watch Florida Lead All."

This was a period of rapid progress in radio technology, and during the "Boom" years of the 1920's Florida was able to provide the continuing financial support needed to ensure that the new radio station would have the latest equipment.

In 1927, the legislature appropriated an additional \$100,000 for the construction, maintenance, and operation of the radio station, and directed that the station be under the supervision of the College of Engineering at the University of Florida.

Rudolph Weaver designed the station in January 1928, and the Tudor Revival style structure he designed was an unexplained departure from the Collegiate Gothic buildings previously erected at the campus. The Gothic style of architecture had been the officially approved style for state colleges since it was chosen by the Board of Control in 1905. The construction contract was won by T.H. Crisp and Company of Sarasota, with a low bid of \$12,600.

WRUF Radio opened in October 1928, as one of the most powerful college radio stations in the nation, second only to the station of the University of New Mexico. The station had a General Electric transmitter with an output of 5,000 watts. The call sign had been changed shortly before opening, so as to indicate the origin of the signal. The station was now known as "WRUF Radio-University of Florida." The station director was Major Garland W. Powell, a lawyer, aviator, and broadcaster who was active in the radio industry. Powell was appointed to the position by Dr. John Tigert, President of the University, who had met Powell when both men were working in Washington, D.C. Powell remained

United States Department of the Interior  
National Park ServiceNational Register of Historic Places  
Continuation SheetSection number 8 Page 4

Old WRUF Radio Station

as the station director until 1955. His long tenure, experience and leadership were vital to the success of WRUF.

As the Florida real estate boom of the 1920's collapsed late in 1927, the support given by the legislature was curtailed, and WRUF Radio had to struggle to keep its operation solvent. As Florida's depression became a part of the national depression, Florida schools, like those in most states of the nation, suffered financially during the 1930's. Expenditures were cut almost to nothing. The buildings for which funds had already been appropriated and where construction was in progress were completed, but few new projects were undertaken as funds dried up and enrollment stagnated in the adverse economic environment. Also, the station had a major technical problem, in that the wave length and frequency used by the station limited reception of its signal to the north central region of the state, thus limiting the audience and, more important, the market available to advertisers. The state legislature attempted to solve the latter problem by sending a resolution to the United States Congress on May 15, 1929, asking that the Federal Radio Commission be directed to give WRUF Radio a more favorable broadcast wave length and frequency.

Unfortunately, the attempt failed, but in 1931 Powell negotiated a contract with the Columbia Broadcasting System to add WRUF Radio to its network, thus boosting the station's offerings and range. While it had always been the intent of the legislature that WRUF Radio was to carry its own weight and be more than just a college station, the network contract and the need for financing probably forced the station toward a commercial orientation at a much faster pace than originally intended.

WRUF Radio followed the intent of its charter in most respects, as the University of Florida's College of Agriculture and Agricultural Extension Division broadcast farm news and agricultural research information, and the Teacher's College broadcast to schools and educators. The College of Engineering was heavily involved in the technical operations of the station, operating and maintaining the station equipment. Students in the College of Journalism and Communications augmented the small full-time broadcasting staff. On the negative side, however, the /

United States Department of the Interior  
National Park Service

# National Register of Historic Places Continuation Sheet

Section number 8 Page 5

Old WRUF Radio Station

remote broadcasting links to Tallahassee were never implemented, and all air time thus originated from the Gainesville campus. Due to the lack of outside influence, and its location on the University of Florida campus, WRUF Radio soon lost its statewide orientation and instead became an integral part of the University of Florida.

It was during this period of transition that Walter L. "Red" Barber was a sportscaster for the station. While he was an undergraduate student at the University of Florida, Barber got his start in broadcasting as a student announcer, remaining at WRUF Radio from 1928 to 1934. He moved to Cincinnati, where he became a nationally known sports announcer. Moving to New York City, he became the broadcaster for the New York Yankees, later accepting a position as the director of CBS Sports for the Columbia Broadcasting System Radio and Television Network.

Although WRUF Radio became a fully commercial station in 1939 when the legislature withdrew financial support, it continued to operate from the campus and to be closely associated with the University of Florida. The technical facilities of the station were kept up to date, but maintenance and improvements to the building were inadequate. By the early 1950's, the structure was leaking and the air conditioning system was so decrepit that noise from it interfered with the station's broadcasts.

In 1955, WRUF Radio moved to new facilities and the old campus building was turned over to the University Police Department for use as its headquarters, a function that it still fulfills. WRUF Radio still retains its former affiliation with the University of Florida, broadcasting sports activities of the school to a statewide audience.

## HISTORIC SIGNIFICANCE, CRITERION C

The WRUF Radio Station is significant as an excellent embodiment of the Tudor Revival style, and as the work of the important Florida architect, Rudolph Weaver. The Tudor Revival style was popular from 1890-1940, peaking during the 1920's and early 1930's and surpassed in popularity only by the Colonial Revival style.

United States Department of the Interior  
National Park Service

**National Register of Historic Places  
Continuation Sheet**

Section number 8 Page 6

Old WRUF Radio Station

---

Based on late Medieval English prototypes, the style developed six principal subtypes during its sixty year span. The WRUF Radio Station is a member of the subtype featuring brick walls and a main gable clad with false half-timbering and stucco infill. While Tudor Revival buildings were constructed of any of four materials (wood, stucco, stone, or brick), or a combination thereof, they all shared common characteristics. These were details such as overlapping steeply pitched gables and cross-gables, a steeply pitched roof, multiple front gables, decorative half-timbering, massive and/or tall chimneys, and tall, narrow windows.

The structure is the only Tudor Revival style building on the University of Florida campus. Its erection was an unusual and unexplained departure from the Collegiate Gothic buildings which had been constructed at the campus since 1905, when the Board of Control had chosen Gothic as the official style for state college buildings.

The architect, Rudolph Weaver, was born in Johnstown, Pennsylvania on April 17, 1880, and in 1905 he received his degree in Architecture from the Drexel Institute in Philadelphia. After post-graduate studies at several universities, he was a draftsman for a Kansas City, Missouri, architectural firm from 1907-1909. After two years as an instructor in architecture for the University of Illinois, in 1911 Weaver became the college architect and dean of the architecture department at the State College of Washington. Remaining in that position until 1923, he designed several campus buildings and the school plan. During 1923-25, he assumed the same position at the University of Idaho, where he designed a hall and drew up the campus plan.

He made his final move in 1925, when he accepted a position as the Dean of the School of Architecture and Allied Arts at the University of Florida in Gainesville. He also became the architect for the Florida Board of Control (now the Board of Regents), in charge of design at all state colleges. He held these positions until his death in Gainesville on November 10, 1944. In 1935 he introduced the project method of instruction, new at the time, in which students were introduced to real design and construction problems by working with Weaver and his staff on Board of Control architecture projects.

**United States Department of the Interior  
National Park Service**

**National Register of Historic Places  
Continuation Sheet**

Section number 8 Page 7

Old WRUF Radio Station

---

In addition to his state positions, Weaver was active in professional organizations, and was a fellow of the American Institute of Architects; a member of the Florida State Board of Architecture, and president from 1932-1934; chairman of the City of Gainesville Planning Board from 1932-1944; a member of the American Association for the Advancement of Science; and was active in many university and social organizations.

In addition to his out of state buildings and designs, Weaver's work in Florida includes dormitories at the Florida School for the Deaf and Blind at St. Augustine; two state buildings in Tallahassee; dormitories, laboratories, an administration building, and an auditorium at the Florida A & M University at Tallahassee; and a classroom, library, social hall, gymnasium, dining hall, and dormitories at the Florida State University at Tallahassee. At the University of Florida, Weaver designed eight buildings in the University of Florida Campus Historic District (NR 1989), and Norman Hall, for which an individual nomination is currently in preparation.

United States Department of the Interior  
National Park Service

National Register of Historic Places  
Continuation Sheet

Section number 9 Page 1

Old WRUF Radio Station

---

Published Material:

Barber, Walter, and Robert Creamer. Rhubarb In The Catbird Seat. Garden City, N.J.:Doubleday, 1968.

Florida Alligator. "Florida's New Radio Station to Open Soon", March 31, 1928.

\_\_\_\_\_. "Columbia to Add WRUF to Network", October 31, 1931.

Florida Legislature. General Acts And Resolutions Adopted By The Legislature Of Florida., Twentieth sess., 1925. Tallahassee, FL.: Appleyard, 1925.

\_\_\_\_\_. General Acts And Resolutions Adopted By The Legislature Of Florida., Twenty-First sess., 1927. Tallahassee, FL.: Appleyard, 1927.

\_\_\_\_\_. General Acts And Resolutions Adopted By The Legislature Of Florida., Twenty-Second sess., 1929. Tallahassee, FL: Appleyard, 1929.

Hampton, Dunn. WDAE, Florida's Pioneer Radio Station. Tampa: Fort Brooke Press, 1972.

McAlester, Virginia and Lee. A Field Guide to American Houses. New York: Knopf, 1986.

National Cyclopedia of American Biography. New York: J.T. White, 1935.

Tallahassee Democrat. "Noted Architect Succumbs Today." November 10, 1944.

Unpublished Material:

Burrows, Edward Lane. "Commercial Radio at the University of Florida: WRUF - An Historical Overview." Diss. Univ. of Florida, 1974.

Shiver, Carl W. "University of Florida Campus Historic District." National Register nomination, 1989.



United States Department of the Interior  
National Park Service

National Register of Historic Places  
Continuation Sheet

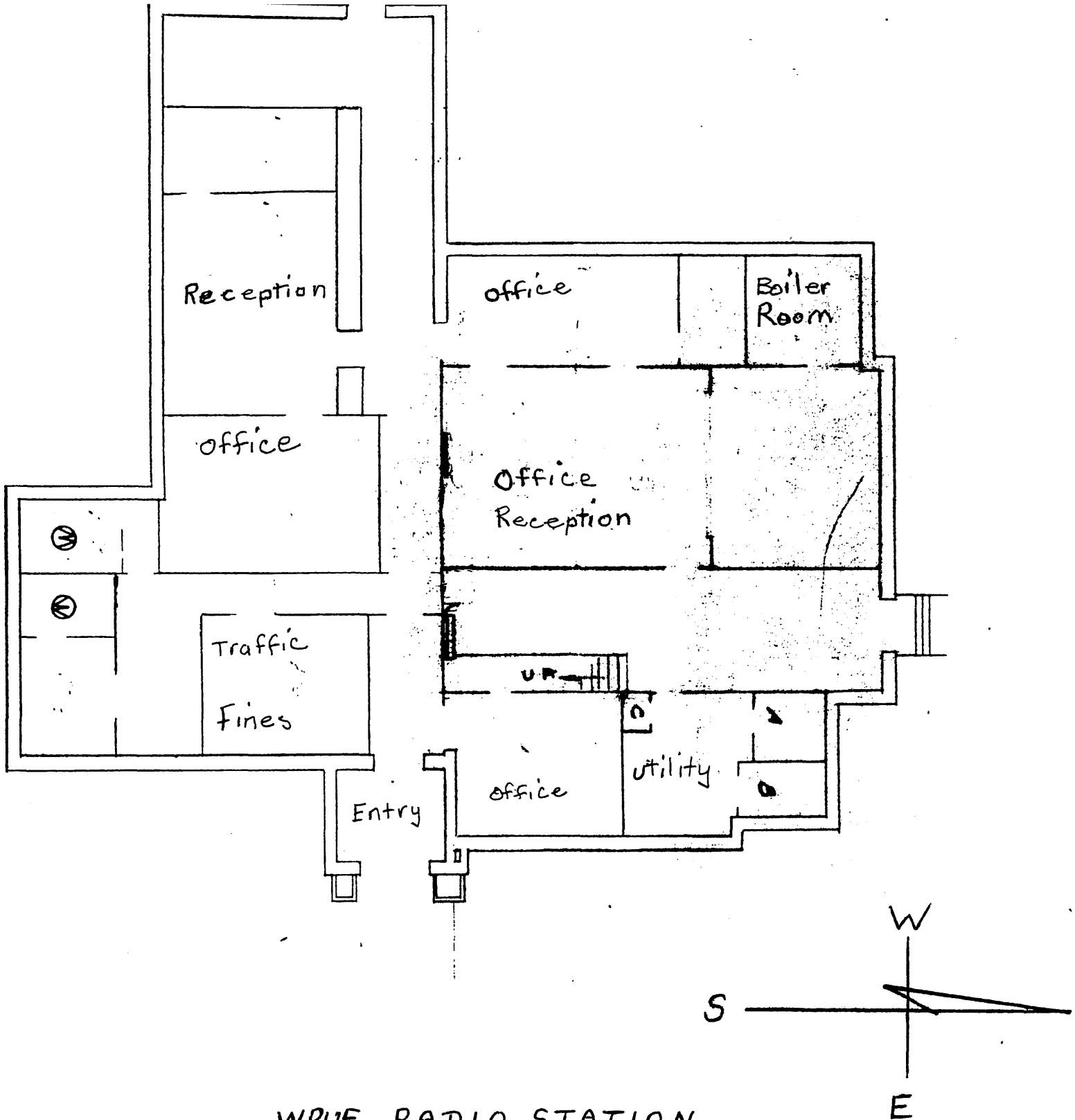
Section number Photos Page 1

Old WRUF Radio Station

---

Information in items 1-5 is the same for all  
photographs.

- 1     1)   WRUF Radio Station, University of Florida  
      2)   Gainesville, Alachua County, Florida  
      3)   Murray D. Laurie  
      4)   May 1988  
      5)   Murray D. Laurie  
      6)   East elevation, camera facing west  
      7)   1 of 6
  
- 2     6)   East elevation, camera facing west  
      7)   2 of 6
  
- 3     6)   North elevation, camera facing south  
      7)   3 of 6
  
- 4     6)   West elevation, camera facing east  
      7)   4 of 6
  
- 5     6)   Interior door, first floor, camera facing south  
      7)   5 of 6
  
- 6     6)   Interior, classroom area, second floor, camera  
      facing south  
      7)   6 of 6



WRUF RADIO STATION

POLICE STATION BLDG #27

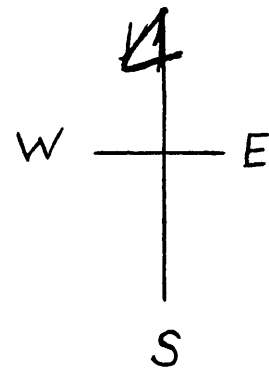
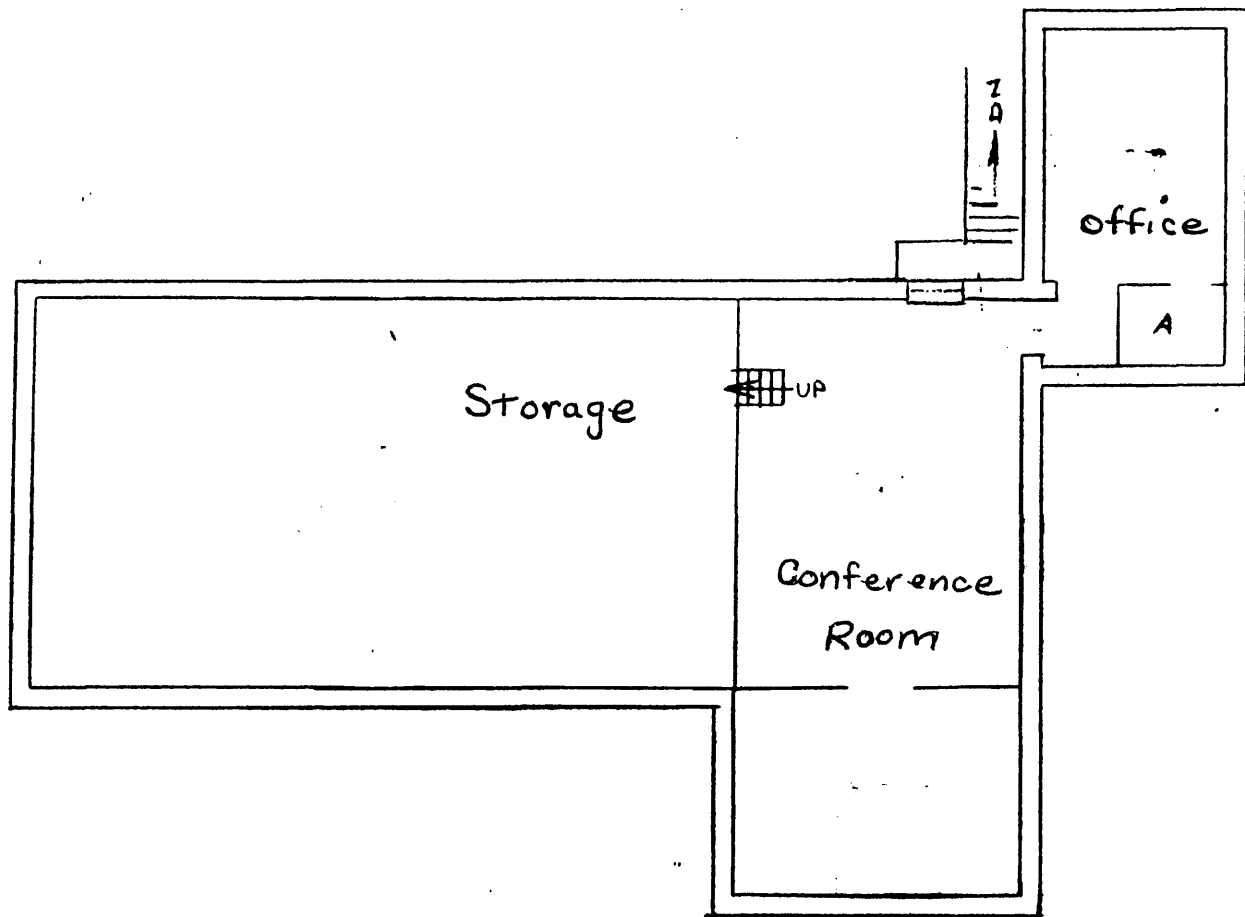
FIRST FLOOR PLAN

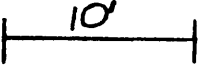
SCALE · 1" = 10' |-----10'-----|

FEB. 23, 1971 *jo*

REV. 2-12-86 LR

WRUF Radio Station  
 Museum Road & Newell Road  
 Gainesville, Alachua County,  
 Florida

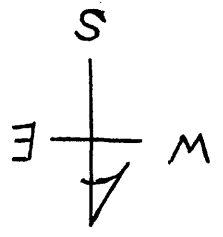


WRUF RADIO STATION  
 POLICE STATION BLDG #27  
 SECOND FLOOR PLAN  
 SCALE 1" = 10'   
 FEB. 23, 1971 *js*

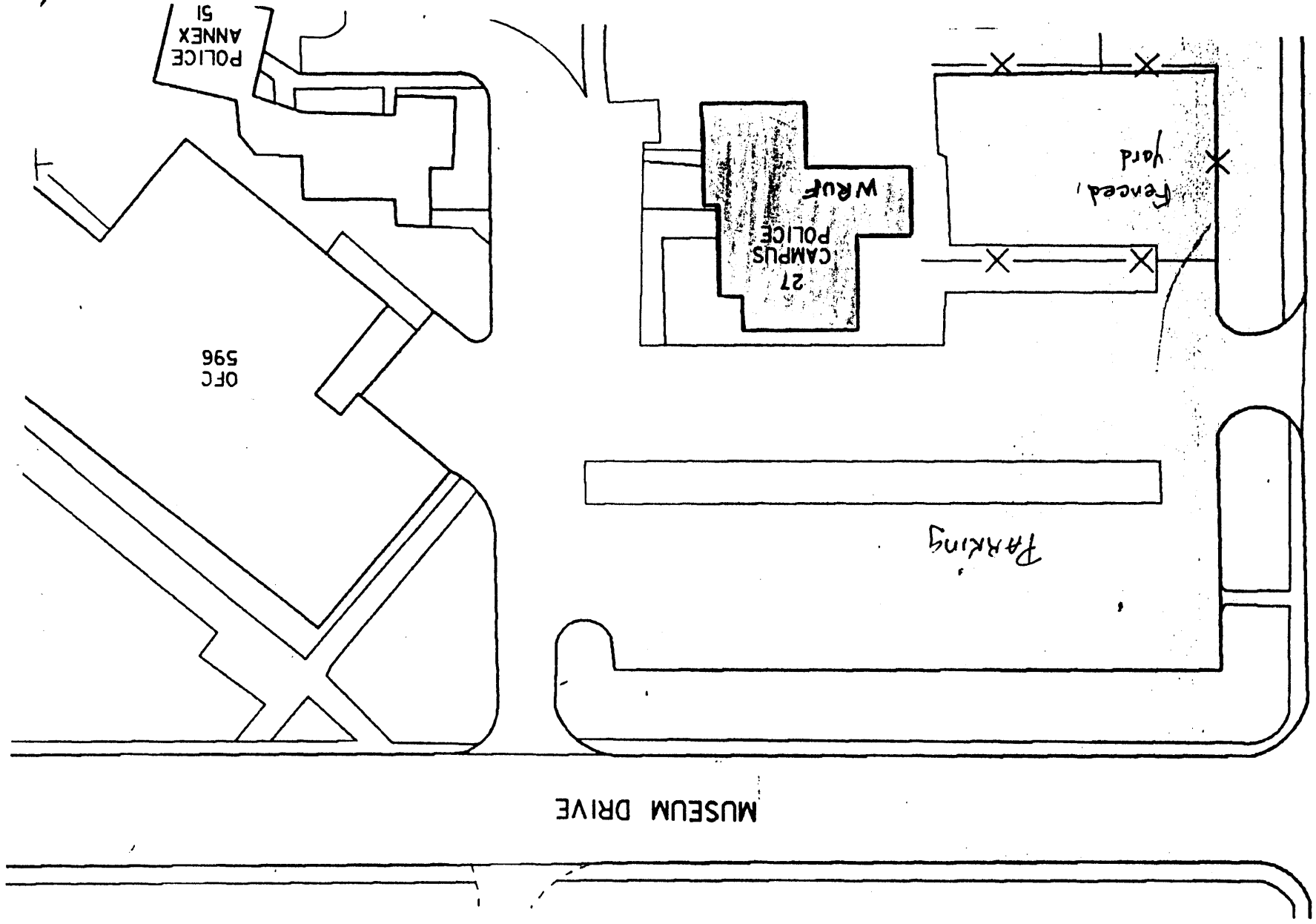
WRUF Radio Station  
 Museum Road & Newell Road  
 Gainesville, Alachua County, Florida

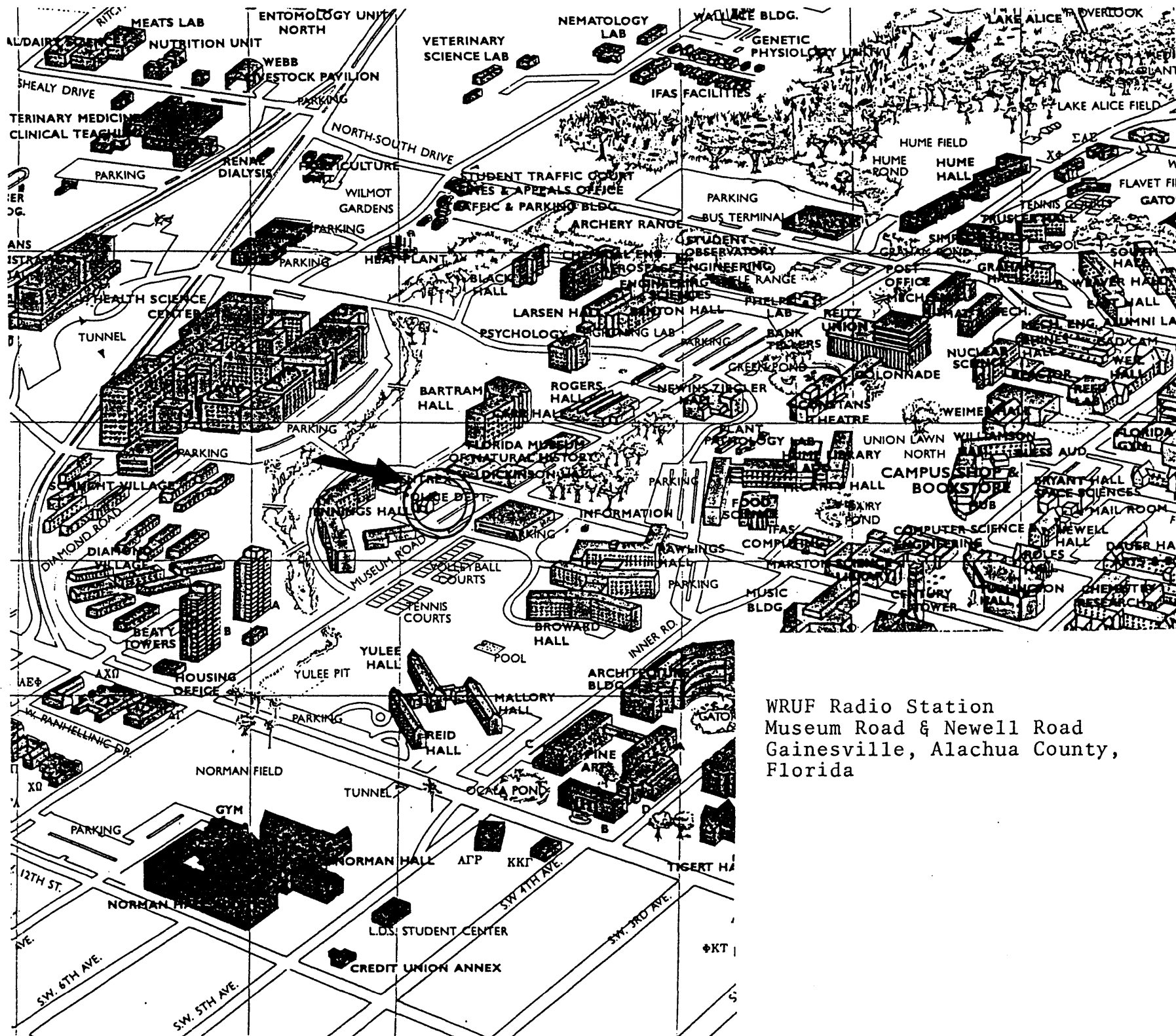
Site plan: WRUF Radio Station (UF Campus Police Station)  
Museum Road & Newell Road  
Gainesville, Alachua County, Florida

Scale: 1" = 50'



MUSEUM DRIVE





WRUF Radio Station  
 Museum Road & Newell Road  
 Gainesville, Alachua County,  
 Florida

