

NATIONAL REGISTER

NPS FORM 10-900 (Rev. 8-86) OMB No. 1024-0018 [SD-SHPO # ECA-OH-597-1/89] [use paper with at least 25% cotton rag content, use NLQ or LQ printer]

United States Department of the Interior -- National Park Service NATIONAL REGISTER OF HISTORIC PLACES -- REGISTRATION FORM

This form is for use in nominating or requesting determinations of eligibility for individual properties or districts. See instructions in Guidelines for Completing National Register Forms (National Register Bulletin 16). Complete each item by marking "x" in the appropriate box or by entering "NA" for "not applicable." For functions, styles, materials, and areas of significance, enter only the categories and subcategories listed in the instructions. For additional space use continuation sheets (Form 10-900a). Type all entries.

1. Name of Property

historic name: Fourmile School No. 21 other name/ site number: CU-SA-3

2. Location

street & number: 1/4 mi. south of Fourmile Junct. on U.S. 16 /NA/ not for publication city, town: Custer /XX/ vicinity state: SOUTH DAKOTA code: SD county: Custer code: SD 033 zip code: 57730

3. Classification

Ownership of Property:	Category of Property	Number of Resources within Property:		
		Contributing	Noncontributing	
/XX/ private	/XX/ building(s)	<u>4</u>	<u>0</u>	buildings
/ / public-local	/ / district	<u> </u>	<u> </u>	sites
/ / public-state	/ / site	<u> </u>	<u> </u>	structures
/ / public-federal	/ / structure	<u> </u>	<u> </u>	objects
	/ / object	<u>4</u>	<u>0</u>	Total
Name of related multiple property listing: NA		Number of contributing resources previously listed in the National Register: <u>0</u>		

11. Form Prepared by

name/title: Rolene Jungemann, Consultant organization: Custer County Commission street & number: 3205 W. 43rd St., No. 21 city or town: Sioux Falls

date: October 12, 1990 telephone: 605-361-9954 state: SOUTH DAKOTA zip code: 57106

page 2: Fourmile School No. 21
property name

, Custer
county

, SOUTH DAKOTA
state

4. State/Federal Agency Certification

As the designated authority under the National Historic Preservation Act of 1966, as amended, I hereby certify that this nomination request for determination of eligibility meets the documentation standards for registering properties in the National Register of Historic Places and meets the procedural and professional requirements set forth in 36 CFR Part 60. In my opinion, the property meets does not meet the National Register criteria. See continuation sheet.

[Signature] 12/24/91
Signature of certifying official Date

South Dakota SHPO
State or Federal agency or bureau

In my opinion, the property meets does not meet the National Register Criteria. See continuation sheet.

Signature of commenting or other official Date

State or Federal agency or bureau

5. National Park Service Certification

I, hereby, certify that this property is:

entered in the National Register

____ see continuation sheet
determined eligible for the
National Register

____ see continuation sheet
determined not eligible for
the National Register

____ removed from the National
Register

____ other, (explain) _____

Mark J. Baker 25 Jan 1991
Entered in the
National Register

fn
Signature of the Keeper Date

page 3: Fourmile School No. 21
property name

, Custer
county

, SOUTH DAKOTA
state

6. Function or Use (enter categories from instructions)

Historic functions:

EDUCATION/School

Current Functions:

RELIGION/Church School

COMMERCE/Business

7. Description

Architectural Classification:

(enter categories from instructions)

OTHER: Cubic Pattern Book School

Materials:

(enter categories from instructions)

foundation Concrete

walls Wood

roof Asphalt

other NA

Describe present and historic physical appearance: /XX/ see continuation sheet

8. Significance

Certifying official has considered the significance of this property in
relation to other properties: / / / / /XX/

nationally statewide locally

Applicable National Register Criteria /XX/ A / /B / /C / /D

Criteria Considerations / /A / /B / /C / /D / /E / /F / /G

Areas of Significance (enter from instructions)

Education

Period of Significance

1914-1940

Significant Dates

NA

Significant Person

NA

Cultural Affiliation

NA

Architect/Builder

Smith Heating Co.

Wilkenson, Mr. ?

**State significance of property, and justify criteria, criteria considerations,
and periods of significance noted above** /XX/ see continuation sheet

**United States Department of the Interior
National Park Service****National Register of Historic Places
Continuation Sheet**Section number 7 Page 1

Located southwest of the city of Custer about one-quarter mile south of U. S. Highway 16, the Fourmile School No. 21 is a rural education complex consisting of the schoolhouse, a storage shed, and two small privies. Bounded on the east by Pleasant Valley Road, the property is enclosed within a one-acre school yard.

1. **Schoolhouse (contributing), 1914.** The wood frame schoolhouse is an example of an early pattern book rural school. The main building, rising from concrete footings is clad with clapboard siding. Measuring 24-feet by 34-feet, it consists of a large classroom, two cloakrooms, and an interior vestibule. An exterior shed-roofed entryway was added to the (east) front facade sometime after initial construction. The building is capped by an asphalt-shingled hipped roof with flared eaves. A hipped-roof dormer projects from the roof surface on the east facade. Fenestration includes a band of six double-hung windows along the south facade lighting the classroom and two windows on the east facade lighting the cloak closets. Interior features include a 12-foot-high ceiling, wainscoting, a blackboard, and a built-in bookcase with drawers for maps and supplies. One of the original cloakrooms has been converted into a restroom.

2. **Storage Shed (contributing), ca. 1914-1920.** The storage shed is located approximately 10 yards west of the schoolhouse. A rectangular wood frame building, it rests on concrete footings and is clad with clapboard siding. It is capped by a shed roof covered with asphalt shingles.

3. **Privy (contributing), ca. 1914.** Located northwest of the storage shed, the rectangular wood frame privy rests on a concrete slab. The building is clad with clapboard siding and capped by an asphalt-shingled gable roof.

4. **Privy (contributing), ca. 1914-1940.** Situated directly north of the schoolhouse, the square wood frame privy rests on concrete footings and has a dirt floor. Drop siding covers the walls of the building, and wood shingles cover the shed roof.

**United States Department of the Interior
National Park Service**

**National Register of Historic Places
Continuation Sheet**

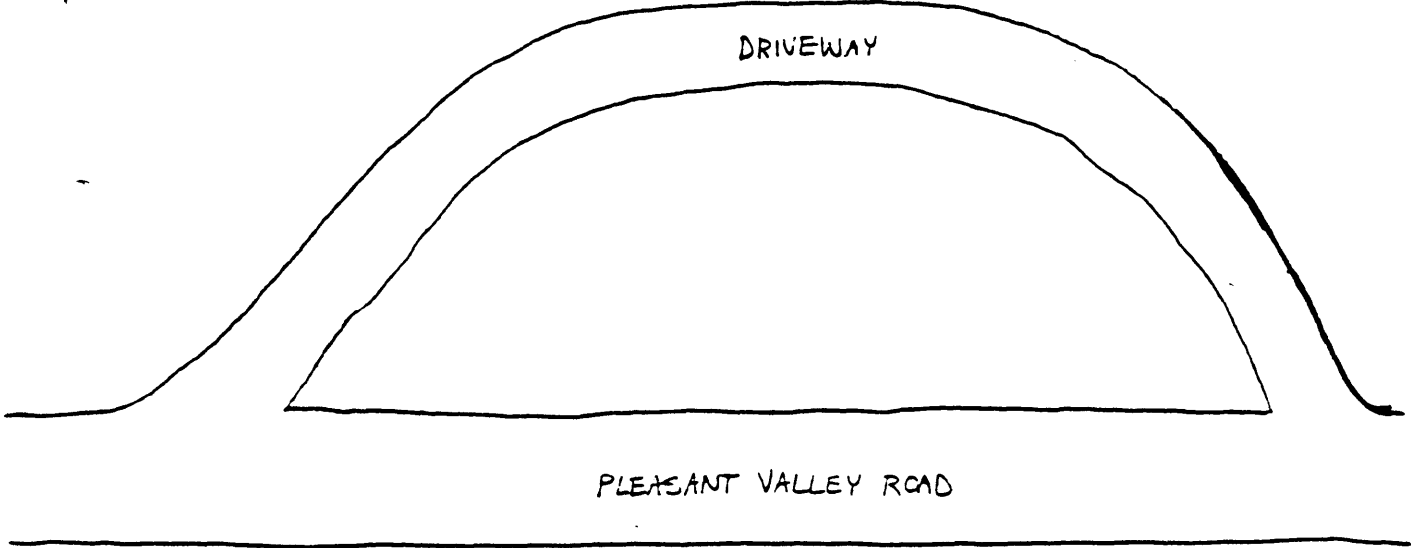
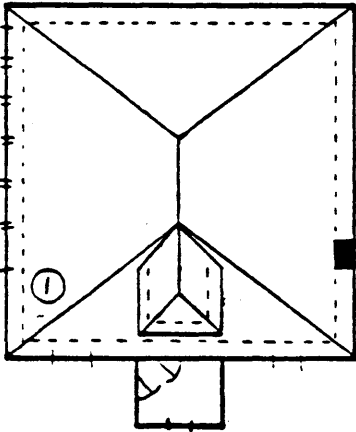
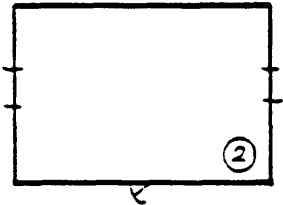
Section number 7 Page 2

Sketch plan of Fourmile School on reverse side

Site Plan (indicate all door and window openings on buildings, roof shapes, and landscape features such as fences, shrubs, etc.)



Indicate North



**United States Department of the Interior
National Park Service**

**National Register of Historic Places
Continuation Sheet**

Section number 8 Page 1

Under Criterion A of the National Register Criteria, the Fourmile School No. 21 is significant in the area of education, because for over sixty years it served as the chief educational center for a small Black Hills district. Built in 1914, it is one of the best-preserved rural schools in the immediate region and is a relatively early example of the pattern book school buildings that dotted the state after the turn of the century. Under the South Dakota Historical Preservation Plan, the nominated property relates to the following historic context: V. Depression and Rebuilding, C. Civic Improvements and New Government-Related Activities.

According to the Sioux Winter Count, the Oglala Teton Sioux arrived in the Black Hills of South Dakota in 1775 and drove the Kiowa tribe from that region. Nearly 100 years later in 1874, rumors of gold in the Black Hills were confirmed by an expedition led by Lt. Colonel George A. Custer. Although the region was closed to non-Indian settlement by the 1868 Laramie Treaty, the news of gold spurred white prospectors to rush into the Black Hills, many of them settling in the area now known as Custer County. On August 10, 1875 a group of miners met and organized Custer City. The county of Custer was established two years later, after the U. S. Government acquired the Black Hills and opened it to settlement.

With this settlement came the need for rural schools to accommodate school-age children and to provide a social meeting place for the miners and homesteaders. According to a Teacher's Report, the first Fourmile School, a rectangular log building, was in service as early as 1898. Teacher W. A. Nevin recorded 33 pupils enrolled in the 60-day school term beginning December 5, 1898. at the pioneer school. In compliance with a standardized course of study, subjects included reading, writing, spelling, grammar, arithmetic, geography, and hygiene.

By the first few decades of the 20th century, original pioneer school buildings around the state were fast becoming obsolete and in need of replacement. At that time, state officials began to study the problems of updating the rural school system and its aging infrastructure. Unfavorable conditions cited in annual teacher's reports included poor lighting, ventilation, and heating, and a lack of educational supplies and equipment. As a result of this general need to update, in 1914, Custer County District No. 21 contracted with the Smith Heating Company (location unknown) to plan a modern rural school.

The new building, conforming to contemporary guidelines, was nearly square in shape with an entry vestibule, cloakrooms, and a large classroom. A band of windows on one side of the classroom provided controllable light and ventilation, and a hot air furnace furnished heat for the schoolhouse. It is

**United States Department of the Interior
National Park Service**

**National Register of Historic Places
Continuation Sheet**

Section number 8 Page 2

capped by a stylish hipped roof with flared eaves. The State Department of Public Instruction approved the plan on June 24, 1914, and the building was open for classes the following December. Local residents, supervised by a Mr. Wilkenson, supplied manual labor for the construction project. It predated by several years a school ranking system and model building plans published by the Department of the Public Instruction. However, it is similar to the later so-called 1-A plan. The log schoolhouse continued to be used for community gatherings, church and school programs, elections, and as a teacher's residence, until it was destroyed by fire on Saturday, February 3, 1927.

In 1959, Fourmile School District No. 21 merged with Rogers School No. 23 and formed the Eldorado District No. 30. Pleasant Valley District No. 19 merged with Eldorado in 1963. Consolidation with the city school system in Custer occurred in 1970; however, Fourmile School continued to operate as a rural elementary school until July 1, 1979 when it was closed. Among the many families, whose children attended the Fourmile school over the years were Bebbingtons, Flidays, Freeland, Kirks, McKennas, and Hendricksons. The latter family had members enrolled there for more than eighty years. Ethel Hendrickson was one of the students in 1898, and Everet Guy Hendrickson, Jr., was a member of the last class at Fourmile School in 1979. A group of Seventh Day Adventists purchased the property and held weekly and summer church school in the building until 1989. Presently, the group is renting the property to Johnston Log Homes, Inc., for use as an office building.

The nominated property includes three other contributing buildings: a woodshed and two privies, which all date from about the time the new school was constructed up to 1940. The period of significance of the nominated property extends from its date of construction in 1914 to 1940, the established fifty-year cut-off date for the National Register.

page 4: Fourmile School No. 21
property name

, Custer
county

, SOUTH DAKOTA
state

9. Major Bibliographical References

/XX/ see continuation sheet

Previous documentation by NPS:

/ / preliminary determination of individual listing (36 CFR 67) has been requested
/ / previously listed in the National Register
/ / previously determined eligible by the National Register
/ / designated a National Historic Landmark
/ / recorded by Historic American Buildings Survey # _____
/ / recorded by Historic American Engineering Record # _____

Primary location of additional data:

/XX/ State historic preservation office
/ / Other State agency
/ / Federal agency
/ / Local government
/ / University
/ / Other

Specify repository:

South Dakota Historical Preservation Center

10. Geographical Data

Acreeage of property: One acre

UTM References:

A = /13/	/606-710/	/4842-340/	B = / /	/ /	/ /
C = / /	/ /	/ /	D = / /	/ /	/ /
ZONE	EASTING	NORTHING	ZONE	EASTING	NORTHING

Quad: Fourmile

Scale: 1:24000

/ / see continuation sheet

Verbal Boundary Description:

The nominated property, which includes a schoolhouse, a shed, and two privies, is contained within a single acre parcel centered on the schoolhouse (resource no. 1). It is located in the Southwest Quarter of the Northwest Quarter of the Southwest Quarter of Section 5, Township 4 South, Range 4 East (Black Hills Meridian), in Custer County, South Dakota.

/ / see continuation sheet

Boundary Justification:

The boundaries of the nominated property are set to include all features of the school yard and to exclude any public roadways or private parcels not associated with the historic school. The boundaries reflect the parcel historically associated with the property, but a suitable legal description of that parcel is not available at this time.

/ / see continuation sheet

United States Department of the Interior
National Park Service

National Register of Historic Places
Continuation Sheet

Section number 9 Page 1

A Brief History of Custer County, South Dakota. [Custer, SD]: Custer County Centennial Committee, 1961.

DeJong, Meleta (Division of Education, Office of School Standards). Personal interview with Rolene Jungemann, April 13, 1990.

Freeland, Francis (Former student of Fourmile School). Telephone interview with Rolene Jungemann, April 2, 1990.

Larsen, Frances (Custer County Register of Deeds). Telephone interview with Rolene Jungemann, April 24, 1990.

Olsen, Shirley (Former student of Fourmile School). Personal correspondence with Rolene Jungemann. July 27, 1989.

_____. Telephone interview with Rolene Jungemann, February 5, 1990.

Our Yesterdays (1870-1970). Hermosa, SD: Eastern Custer County Historical Society, 1967-1970.

Record of Plans and Specifications of School Houses. Department of Public Instruction, 1911. Housed at the Department of Education and Cultural Affairs, Division of Education, Office of School Standards, Kneip Building, Pierre, SD.

Schell, Herbert S. History of South Dakota. Revised edition. Lincoln: University of Nebraska Press, 1975.

Sundstrom, Jessie T., ed. Custer County History to 1976. Rapid City, SD: Printing, Inc., 1977.

**United States Department of the Interior
National Park Service**

**National Register of Historic Places
Continuation Sheet**

Section number photos Page 1

1.

Fourmile School No. 21
Custer Vicinity, Custer County, South Dakota
by Rolene Jungemann
June 1989
Neg.: South Dakota Historical Preservation Center
Schoolhouse (resource no. 1) East (front) and south facades,
camera facing northwest
Photo No. 1

2.

Fourmile School No. 21
Custer Vicinity, Custer County, South Dakota
by Rolene Jungemann
June 1989
Neg.: South Dakota Historical Preservation Center
Schoolhouse, Interior
Photo No. 2

3.

Fourmile School No. 21
Custer Vicinity, Custer County, South Dakota
by Rolene Jungemann
June 1989
Neg.: South Dakota Historical Preservation Center
Storage Shed (resource no. 2) East and south facades,
camera facing northwest
Photo No. 3

4.

Fourmile School No. 21
Custer Vicinity, Custer County, South Dakota
by Rolene Jungemann
June 1989
Neg.: South Dakota Historical Preservation Center
Privy (resource no. 3) East and south facades,
camera facing northwest
Photo No. 4

**United States Department of the Interior
National Park Service**

**National Register of Historic Places
Continuation Sheet**

Section number photos Page 2

5.

Fourmile School No. 21

Custer Vicinity, Custer County, South Dakota

by Rolene Jungemann

June 1989

Neg.: South Dakota Historical Preservation Center

Privy (resource no. 4) East and south (front) facades,
camera facing northwest

Photo No. 5