



- 1) THE WELLER HOUSE
- 2) CHESTERTON, INDIANA
- 3) RON KNIGHT
- 4) JAN 12, 1980
- 5) IN PHOTOGRAPHERS POSSESSION
- 6) FRONT OF HOUSE FACING
NORTHWEST.
- 7) ~~SIX (6)~~ # ONE of eight



- 1) THE WELLER HOUSE
- 2) CHESTERTON INDIANA.
- 3) RON KNIGHT
- 4) JAN. 12TH 1980
- 5) IN PHOTOGRAPHERS POSSESSION
- 6) REAR OF HOUSE FACING DIRECTLY SOUTH.
- 7) ~~FOUR (4)~~[#] Two of eight



WEST SIDE

The Weller House

Chesterton, Indiana

Photographer unknown

Date unknown

Negative Unavailable

Camera facing east (west facade)

#Three of eight



- 1) THE WELLER HOUSE
- 2) CHESTERTON INDIANA
- 3) RON KNIGHT
- 4) JAN 12, 1980
- 5) NEGATIVE IN PHOTOGRAPHERS
POSSESSION
- 6) CORBELS ON FRONT ENTRANCE
FACING EAST.
- 7) ~~SEVEN (7)~~ # Four of eight.



Arched Moldings

1. The Weller House
2. Chesterton, Indiana
3. Photographer unknown
4. Date unknown
5. Negative not available
6. Molding
7. #Five of eight



Rope Design on Corner

The Weller House

Chesterton, Indiana

Photographer Unknown

Date unknown

Negative unavailable

Molding on southeast corner, camera
facing Northwest

#six of eight



Front Porch

Rope Molding

Weller House

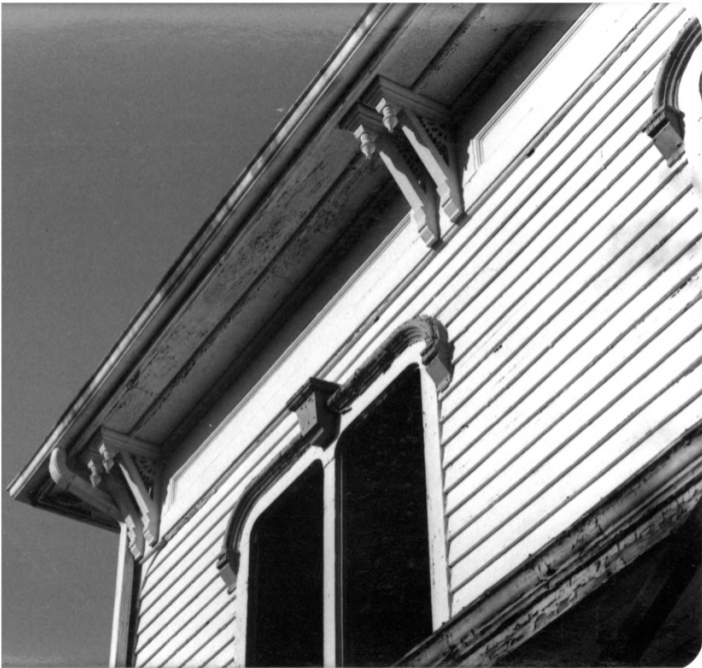
Chesterton, Indiana

Photographer unknown

Date unknown

Negative unavailable

Molding on Southeast corner, camera
#seven of eight



- 1) THE WELLER HOUSE
- 2) CHESTERTON INDIANA
- 3) RON KNIGHT
- 4) JAN 12, 1980
- 5) NEGATIVE IN PHOTOGRAPHERS
POSSESSION
- 6) BRACKETS ADORNING SOFFIT
- 7) EIGHT (8) of eight