

19 G.A.R. 14
MEMORIAL HALL

11th
1400
ST

Massachusetts
1000
AV

STOP

DO NOT
ENTER



GRAND ARMY MEMORIAL HALL

OSCEOLA COUNTY, FLORIDA

1 OF 15



19 G.A.R. 14
MEMORIAL HALL

NO
PARKING
ANY
TIME

GRAND ARMY MEMORIAL HALL
OSCEOLA, COUNTY FLORIDA

2 OF 15



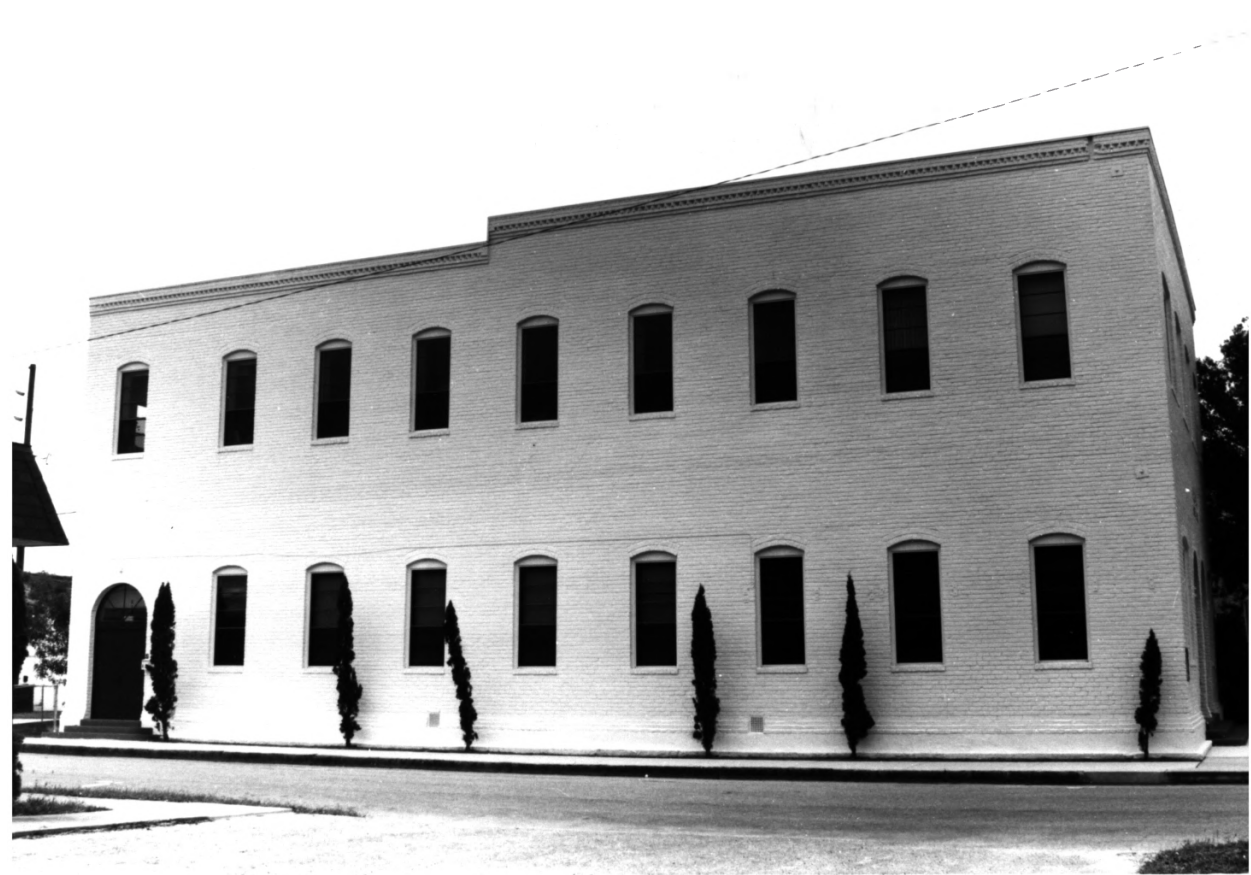
19 G.A.R. 14
MEMORIAL HALL

DO NOT
ENTER

GRAND ARMY MEMORIAL HALL

OSCEOLA COUNTY, FLORIDA

3 OF 15



GRAND ARMY MEMORIAL HALL

OSCEOLA COUNTY, FL

4/15



GRAND ARMY MEMORIAL HALL

OSCEOLA COUNTY, FL

5/15



GRAND ARMY MEMORIAL HALL

OSCEOLA COUNTY, FL

6/15



GRAND ARMY MEMORIAL HALL

OSCEOLA COUNTY, FL

7/15

**19 G.A.R. 14
MEMORIAL HALL.**

GRAND ARMY MEMORIAL HALL

OSCEOLA COUNTY, FLORIDA

8/15

BOSTON
 130 Broadway
 1007 BOSTON, Co. I, 4th ILL. CAVY. S. Schell, Capt. C. E. Brown, Westcott Bailey, ...
 TERRY POST, 463, SHARROGA, ILL. Capt. C. B. ... Co. C, 80th Ill. Co. I, 52nd Pa. Vol. ...

CAPT. B. PRENTISS
 Co. H, 1st Cav. (Ill.)
CAPT. J. N. JOHNSON
 Co. H, 1st Cav. (Ill.)
A. F. LINCK
 Co. B, 46th Ill.
H. W. CORL
 Co. B, 46th Ill.
A. FINCK
 Co. B, 46th Ill.
C. C. CURTIS
 Co. B, 46th Ill.

W. WINTER
 Co. B, 8th Tenn.
F. CALDWELL
 Co. H, 2nd N. B. Co.
F. B. SEARS
 Co. E, 2nd Galg.
J. GILMAN
 Co. E, 5th Kas. Co.
J. ALBERTSON
 Co. D, 2nd Ill. N. L.
J. INMAN
 Co. H, 3rd N. J.

T. MARBLE
 Co. I, 3rd Mich.
E. HOPPE
 Co. E, 28th Mo.
J. DOEBLE
 Co. A, 11th Mo. Co.
C. PHELPS
 Co. E, 10th Mo.
IM. VANCE
 Co. I, 9th Mo. Co.
H. OTTERLEY
 Co. H, 8th Mo.
J. W. MATHEWS
 Co. L, 2nd Mo. Co.

B. SEGRAVE
 Co. B, 10th Conn.
W. M. COOK
 Co. F, 22nd Conn.
T. T. TABOR
 Co. F, 2nd Btry, 11th Mass.
J. M. RANDALL
 Co. I, 36th Wis.
A. H. MARSKE
 Co. H, 3rd Wis.
J. WOLF
 Co. F, 2nd Wis.

O. T. STEVERSON
 Co. B, 30th Wis.
H. S. BLOODGOOD
 Co. E, 28th Wis.
E. EMLERSON
 Co. A, 5th Wis.
C. C. CURTIS
 Co. K, 42nd Wis.
H. D. BRAINARD
 Co. D, 39th Wis.
H. P. GOODMAN
 Co. A, 17th Wis. Art.
E. S. VALENTINE
 Co. K, 1st Wis. Co.

G. W. WOODARD
 Co. G, 11th N. H.
A. S. CURRIER
 Co. B, 3rd N. H.
E. H. ALBERTSON
 Co. H, 31st N. J.
U. N. ORR
 Co. I, 6th W. Va.
G. FRY
 Co. A, 4th W. Va.
L. WOODS
 Co. E, 7th W. Va.

J. H. DAVIS
 Co. I, 13th W. Va.
M. GERWIG
 Co. I, 3rd W. Va.
W. W. FERGUSON
 Co. B, 2nd W. Va.
C. PENN 596
 Co. E, 2nd W. Va.
H. LEWIS
 Co. E, 7th W. Va.
N. CHILDS
 Co. B, 7th Mich.
J. N. BURCH
 Co. E, 22nd Mich.

F. O. SCARR
 Co. C, 1st Mich. Es.
W. E. SPRAGUE
 Co. C, 10th Mich.
J. F. BULLARD
 Co. D, 11th Mich.
J. CUMMINGS
 Co. D, 11th Mich.
J. F. BULLARD
 Co. C, 4th Mich. Co.
J. GOFF
 Co. I, 8th Mich. Co.

A. G. MILLER
 Co. B, 26th Mich.
A. M. PENNY
 Co. I, 22nd Mich.
A. D. COOLEY
 Co. D, 16th Mich.
P. TREMPER
 Co. A, 22nd Mich.
E. M. THAYER
 Co. K, 6th Mich. Art.
J. A. BLAICH
 Co. A, 1st Mich. Art.
J. C. FORD
 Co. C, 10th Mich.

F. F. MCNAIR
 Co. I, 15th Ind. Cav.
EDWIN. MAY
 Supt. 338th 99th Ill.
J. A. STANNIS
 Co. B, 14th Ind.
C. C. CLAUSSEN
 Co. B, 82nd Ill. Inf.
A. M. B. BOSE
 Detroit Mich.
A. N. PROTZMAN
 Co. D, 21st Ill.

C. B. WARNER
 Co. C, 3rd Ill. Co.
Rev. M. P. JULIAN
 Co. D, 115th Ill.
L. M. FAIRCCHILD
 Co. K, 75th Ill.
C. BURDSALL
 Co. E, 46th Ill.
A. M. SMITH
 Co. F, 16th Ill.
L. H. PROSSER
 Co. Sor, 33rd Ill.
L. C. FARNAM
 Co. E, 116th Ill.

G. M. HILTI
 Sst. Co. E, 4th Ill. Co.
R. S. LAWSON
 Co. C, 95th Ill.
J. A. NELSON
 Co. H, 108th Ill.
O. P. DARST
 Co. G, 17th Ill.
L. H. DARST
 Co. H, 70th Ill.
E. L. POOL
 Co. G, 46th Ill.

L. Q. BOWER
 Co. E, 4th Ill. Co.
W. M. MOORE
 Co. B, 62nd Ill.
D. J. COLE
 Co. K, 47th Ill.
H. BICKET
 Co. F, 122nd Ill. Co.
S. W. RODE
 Co. F, 7th Ill. Co.
J. A. ANDERSON
 Co. I, 47th Ill.
C. A. ZENOR
 Co. I, 47th Ill.

S. M. STONER
 Co. A, 11th Ill.
H. W. SIGWORT
 Sst. Co. H, 67th Ill.
W. H. WILDEY
 Co. A, 11th Ill. Co.
L. D. MARBLE
 Co. E, 105th Ill.
A. SCOTT
 Co. I, 1st Co. A, 18th Ill.
E. W. THERBEE
 Co. E, 46th Ill.

J. S. HUDDLESTON
 Co. I, 119th Ill. Co.
S. M. HOBSON
 Co. K, 21st Ill. Co.
W. W. HOLGATE
 Co. E, 112th Ill.
J. B. HOFFER
 Co. E, 116th Ill.
W. E. COCK
 Co. B, 32nd Ill. Co.
J. L. THORNDIKE
 Co. D, 101st Ill.

GRAND ARMY MEMORIAL HALL

OSCEOLA COUNTY, FLORIDA

9 15

Abram Lincoln
CAMP 8

DIVISION OF
ALA & TENN Sons of V USA
ST CLOUD FLA

"DJ BUTTS
Co B 2 MINN

E.B. FROST Posty 364 Postville J.W. MITCHELL Signal Corps USA D.K. HALL Co C 2 DC D.K. HALL Co C 2 Reg DC Geo MOCER Co H 6 US Cav JE RILEY Co B 17 US Vltm R.C. EAGLES 1 BATT MILK

J. QUIMBY Co A 15 Vt O.J. TOMLINSON Co D 13 VER A.E. CRAM Co G 8 Vt CL HADLEY Co D 5 Vt D. HARVEY Co A 3 Vt J.J. GARNER Co D 3 KY

M. BIRRETT Co H 32 Iowa L.W. TRACY Co H 35 Iowa A.C. MARSH Co K 30 Iowa G.E. DENNIS Co D 25 Iowa N.C. DYE Co I 24 Iowa L.S. PITCHER Co A 1/4 Iowa CES. COOPER Co I 13 Ia

Z. BARAGER Co A 13 Iowa H. KLOOS Co E 10 Iowa E.R. CLARK Co K 6 OWA E.C. BOYLES Co K 6 Iowa H. VOSS Co A 5 Iowa J.L. HALL Co H 1 Iowa

J.M. BURDICK Co D 28 Wis A.W. DELNAH Co B 12 R.I. H.F. RICE Co E 51 MASS Wm BIRCHER Co K 2 MINN W.W. WALTHER Co M 2 MILC L.E. THOMAS Co A 1 MinHA E. GRAF Co B 1 MI

S. TALLOW Co E.B. 1 Ks C.N. BENNETT Capt Co C 38 MASS R.B. CURTIS Co D 17 MASS P. HYDE Co I 10 MASS C.D. BLOOD Co IC 1 MASS C. RATHBUN Co F 1 MASS

J. HAMILTON Co D 108 KY D. HALL RIGGIN St Cloud EG. FARRIS Co F 32 Ky HT WILCOX Co H 11 KY P. WEDDLE Co D 3 KY T. KING Co B 2 KY I. ROLL Co G 1 CAL

W.J. WILLIAMSON Co K 142 IND W.B.M. MAKEN Co B 129 IND W. VAN NATTA Co E 99 Ind V. T. VAN NATTA Co E 99 IND A.C. LOGAN Co H 87 IND ADAM SMITH Co B 26 IND

Alex. GOLDMAN Co I 180 IND C.D.M. CLURE Co H 72 IND JE RILEY Co F 39 IND J. BULLETT Co B 53 IND JE RILEY vs 67 Co A 49 IND W. STEWART Co H 47 IND F.A. SIBERT Co F 47 IND

337 Brinkerhoff Co C H 27 Ind. L.A. BROWN Co G 29 IND J.W. SMOCK Co F 19 IND C.B. FARRIS Co L 14 USV J.F. FARRIS Co K 16 Ind. J. OSLER Co F 11 Ind

I. HUNTSINGER Co A 72 Ind JE RILEY Co A 19 IND J.W. OSLER Co F 11 IND J. LITCHFIELD Co I 10 IND S. SWINEHART Co C 9 Reg Ind J.M. WALKER Bat A 1 Ohio AR J.E. WILLIAMS

D.L. Rice M.D. C. Onsbough M. Motte Eppenau M. Hannah Stanton M.H. Tracy Emma & Williams WRC

Mary of Caldwell WRC M. J. Caldwell M. J. Farman May S. Mitchell Ida B. Dodge M. A. Ferguson WRC Flo E. Lyson

W.F. KENNEY Co. F. 137 PA WRC J. Angel, W.C. 116 6 Wash. N.Y. for DC J. L. Bell, W.C. 116 6 R.N.S.V. PRES. WRC W. WANGEL, 121 Academy Capt. Co I 68 Ind. Cal. May Thordike WRC No. 155 Ind

F. STOBLE Co C 103 PA G.W. DAUGHERTY Ring Gold C. PA Adam M. GILL Co G 85 PA Wm STAFF Co I 103 PA H. ANDERSON Co A 140 PA J.T. BURBANK Co I 60 PRV C. W.P. LYNCH Co A 130 PA

J.T. WILKINS Co C 88 PA H. NELSON Co F 57 PA J. HOUSTON Co K 10 PA Geo. MOON Co H 134 Penn C. BURKHART Co B 93 PA C.C. COTTRELL Co B 12 PA C

J. ALEXANDER Co B 149 PA M. CHEESMAN Co E 83 PA J.I. MARTIN Co H 101 Penn M. J. Martin R.A. SHEARER Co E 11 PA N.P. CURTIS Co H 10 PA M.P. Curtis WRC

D.B. DRUMOLD Co A 149 Pa. Sw. V. McLELLAN Co. S. Mich. Geo. NORTHROCK US Navy JAS. WALDEN 6. TRANS. LA RAY

L. BARDEWELL Rejoice NY C. Adams Co. I 2, E. H. SI Co. 4, 10, 11, 12, 13, 14, 15, 16, 17, 18, 19, 20, 21, 22, 23, 24, 25, 26, 27, 28, 29, 30, 31, 32, 33, 34, 35, 36, 37, 38, 39, 40, 41, 42, 43, 44, 45, 46, 47, 48, 49, 50, 51, 52, 53, 54, 55, 56, 57, 58, 59, 60, 61, 62, 63, 64, 65, 66, 67, 68, 69, 70, 71, 72, 73, 74, 75, 76, 77, 78, 79, 80, 81, 82, 83, 84, 85, 86, 87, 88, 89, 90, 91, 92, 93, 94, 95, 96, 97, 98, 99, 100

E. BURR Co K 136 NY A. ADAMS Co. D 64 NY LANDERS Co C NY HART F. CHAPMAN Co NY V. F. BLY J.J. WHITEBECK Co A 150 NY C.F. SNOW Co E 13 NY

E.W. FLETCHER Co C 27 NY W.L. PIERCE Co. 50 NY EG. J. WILLETS Co 23 NY W. ROBINSON Co K 26 NY J. LEAN Co G 81 NY J. LANDERS Co G 5 NY E. BRASEY Co K 123 NY

SHUTTS Co E 1 NY L. Zimmermann Co C 154 NY G.W. MARSH Co D 60 NY F. SMITH Co A 174 NY T.C. KNAPP Co K 6 NY A.M. GRAHAM Co C 28 NY

S.J. CRIBER Capt Co K 184 NY S.N. SMITH Co D 23 NY A.B. PAYNE Co L 22 NYC K. BLOSS Co I NY A. CRANSTON Co I 14 Brooklyn W.L. BOWEN Co K 117 NY J.I. DUTTON Co H 15 NY L.B. FEW Co F 48 NY J.C. PELL Co I NY B. DOANE Co A 160 NY J. SANGAMO Co M 2 NY V.G. J. TOWLERTON Co K 9 NY AM

C.O. WOOD Co H 15 NY C. RAY Co G 70 NY S.E. HILL Co H 30 NY I. SPOFFORD, HUGL & REGULAR ARMY G. CALKINS Co. 1, 2, 3, 4, 5, 6, 7, 8, 9, 10, 11, 12, 13, 14, 15, 16, 17, 18, 19, 20, 21, 22, 23, 24, 25, 26, 27, 28, 29, 30, 31, 32, 33, 34, 35, 36, 37, 38, 39, 40, 41, 42, 43, 44, 45, 46, 47, 48, 49, 50, 51, 52, 53, 54, 55, 56, 57, 58, 59, 60, 61, 62, 63, 64, 65, 66, 67, 68, 69, 70, 71, 72, 73, 74, 75, 76, 77, 78, 79, 80, 81, 82, 83, 84, 85, 86, 87, 88, 89, 90, 91, 92, 93, 94, 95, 96, 97, 98, 99, 100

C.O. WOOD Co H 15 NY C. RAY Co G 70 NY S.E. HILL Co H 30 NY I. SPOFFORD, HUGL & REGULAR ARMY G. CALKINS Co. 1, 2, 3, 4, 5, 6, 7, 8, 9, 10, 11, 12, 13, 14, 15, 16, 17, 18, 19, 20, 21, 22, 23, 24, 25, 26, 27, 28, 29, 30, 31, 32, 33, 34, 35, 36, 37, 38, 39, 40, 41, 42, 43, 44, 45, 46, 47, 48, 49, 50, 51, 52, 53, 54, 55, 56, 57, 58, 59, 60, 61, 62, 63, 64, 65, 66, 67, 68, 69, 70, 71, 72, 73, 74, 75, 76, 77, 78, 79, 80, 81, 82, 83, 84, 85, 86, 87, 88, 89, 90, 91, 92, 93, 94, 95, 96, 97, 98, 99, 100

C.O. WOOD Co H 15 NY C. RAY Co G 70 NY S.E. HILL Co H 30 NY I. SPOFFORD, HUGL & REGULAR ARMY G. CALKINS Co. 1, 2, 3, 4, 5, 6, 7, 8, 9, 10, 11, 12, 13, 14, 15, 16, 17, 18, 19, 20, 21, 22, 23, 24, 25, 26, 27, 28, 29, 30, 31, 32, 33, 34, 35, 36, 37, 38, 39, 40, 41, 42, 43, 44, 45, 46, 47, 48, 49, 50, 51, 52, 53, 54, 55, 56, 57, 58, 59, 60, 61, 62, 63, 64, 65, 66, 67, 68, 69, 70, 71, 72, 73, 74, 75, 76, 77, 78, 79, 80, 81, 82, 83, 84, 85, 86, 87, 88, 89, 90, 91, 92, 93, 94, 95, 96, 97, 98, 99, 100

C.O. WOOD Co H 15 NY C. RAY Co G 70 NY S.E. HILL Co H 30 NY I. SPOFFORD, HUGL & REGULAR ARMY G. CALKINS Co. 1, 2, 3, 4, 5, 6, 7, 8, 9, 10, 11, 12, 13, 14, 15, 16, 17, 18, 19, 20, 21, 22, 23, 24, 25, 26, 27, 28, 29, 30, 31, 32, 33, 34, 35, 36, 37, 38, 39, 40, 41, 42, 43, 44, 45, 46, 47, 48, 49, 50, 51, 52, 53, 54, 55, 56, 57, 58, 59, 60, 61, 62, 63, 64, 65, 66, 67, 68, 69, 70, 71, 72, 73, 74, 75, 76, 77, 78, 79, 80, 81, 82, 83, 84, 85, 86, 87, 88, 89, 90, 91, 92, 93, 94, 95, 96, 97, 98, 99, 100

GRAND ARMY MEMORIAL HALL
OSCEOLA COUNTY, FLORIDA

10 / 15



GRAND ARMY MEMORIAL HALL

OSCEOLA COUNTY, FLORIDA

11. 15



GRAND ARMY MEMORIAL HALL

OSCEOLA COUNTY, FLORIDA

12.15



JOHN HERFORTH. 1814
CINCINNATI, OHIO

GRAND ARMY MEMORIAL HALL

OSCEOLA COUNTY, FL

13/15

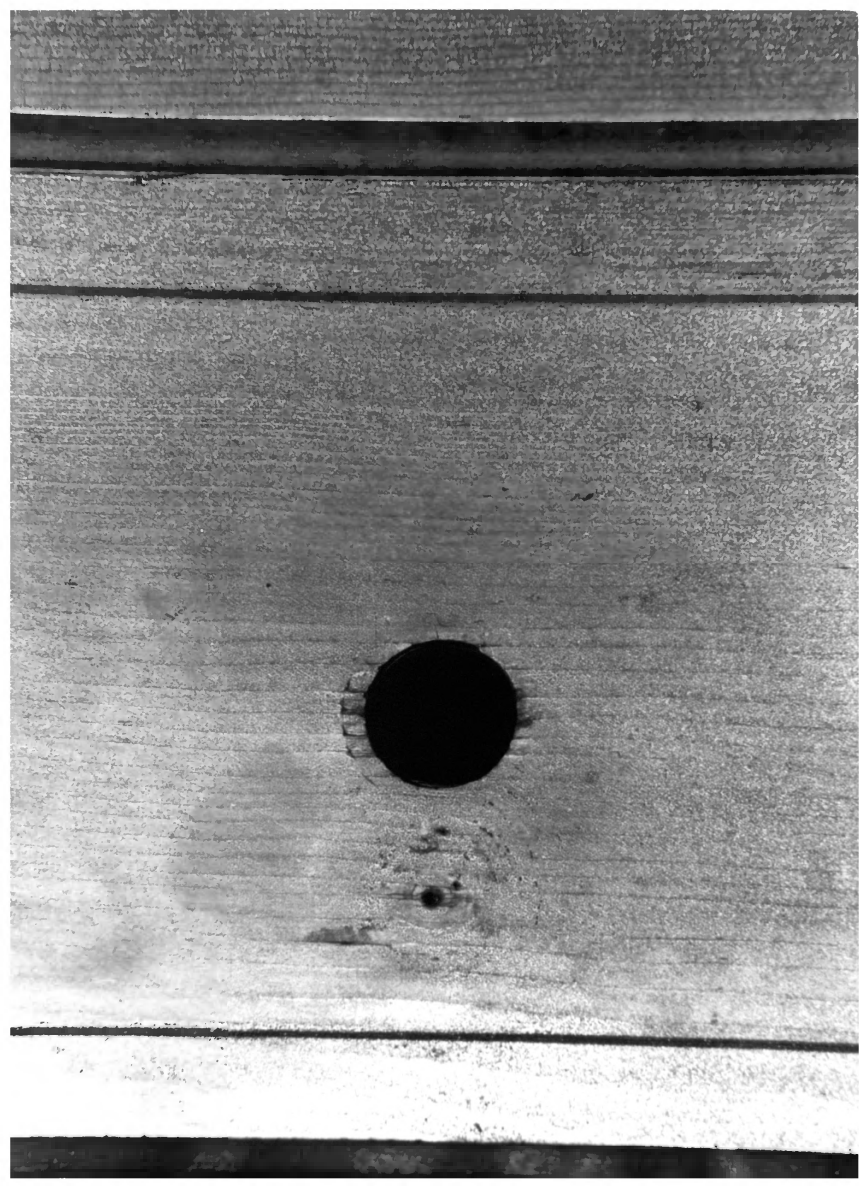
EXIT



GRAND ARMY MEMORIAL HALL

OSCEOLA COUNTY, FL

14 15



GRAND ARMY MEMORIAL HALL

OSCEOLA COUNTY, FL

15

15