

561  
B1

**United States Department of the Interior  
National Park Service**

**NATIONAL REGISTER OF HISTORIC PLACES  
CONTINUATION SHEET**

Section: Page: 1 West Point Unified Historic District  
Clay County, Mississippi

**Amendment No. 1**

West Point Unified Historic District  
Boundary Increase No. 1  
West Point, Clay County, Mississippi 025

The purpose of this amendment is to increase the boundaries of the West Point Unified Historic District by adding three properties that are immediately adjacent to the previous boundary. The district was listed on the National Register of Historic Places on December 1, 2009. The three houses in the proposed boundary increase in the 100 block of West Broad Street were built during the Period of Significance, contribute to the historic character and architectural diversity of the district and retain sufficient integrity to be listed as Contributing Resources in the West Point Unified Historic District.

Section 1: Name of Property

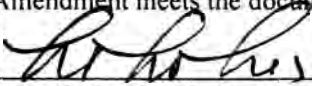
West Point Unified Historic District (Boundary Increase No. 1)

Section 2. Location (of added property)

117 West Broad Street, West Point, Clay County, Mississippi 39773; 123 West Broad Street, Clay County, Mississippi 39773; 133 West Broad Street, Clay County, Mississippi 39773

Section 3: Certification

This Amendment meets the documentation standards for local significance.

  
ht holmes, State Historic Preservation Officer

5-22-2012  
Date

Section 5. Classification

Number Resources  
Contributing Buildings: 137  
Total Contributing: 143

**United States Department of the Interior  
National Park Service**

**NATIONAL REGISTER OF HISTORIC PLACES  
CONTINUATION SHEET**

Section:

Page: 2

West Point Unified Historic District  
Clay County, Mississippi

---

Section 7. Description

The West Point Unified Historic District encompasses the immediate downtown commercial core, as well as several established neighborhoods roughly bounded by the rear property lines of resources along East Main Street on the north, McCord Street to the west, Forrest Street to the east and Travis Street to the south. The proposed boundary addition includes three houses on the north side of West Broad Street. The houses are immediately adjacent to Resource No. 78, the Episcopal Church of the Incarnation, located at 103 West Broad Street. Resource 78 is the westernmost resource on West Broad Street currently included in the district. When the district was surveyed the three houses to the west were inadvertently omitted from the survey and the nomination. The houses are consistent in design, materials, massing, setback and landscaping as other residential resources in the district.

382. C 117 West Broad Street c. 1885 Church of the Incarnation Parsonage  
Two-story frame residence with hipped roof clad in asbestos shingles. Full width one-story porch with flat roof supported by four square columns on brick pedestals. Centered single leaf half-glazed wood door with multi-light transom and side lights. Flanked by paired 2/2 double hung windows. On second floor single 2/2 double-hung wood windows flank centered three part windows. Second floor probably added c. 1905.
383. C 123 West Broad Street c. 1915  
One-story brick-veneer residence with hipped-on-gable roof covered with asbestos shingles. Large dormer with pyramidal and paired louvered vent dominates south elevation. Full-width porch with hipped roof supported by ornamental iron piers with ornamental iron rail. Single leaf wood door offset to the west is flanked by 9/9 double-hung windows.
384. C 133 West Broad Street c. 1885 Folk Victorian  
One-story frame L-front house with intersecting gable roof clad in asbestos shingles. Prominent front-facing gable offset to the west with raking cornice and returns. Round vent in apex, paired 1/1 double hung wood windows under metal canopy. A shed roof porch along main elevation wraps around to the east. Porch has broad cornice supported by square wood columns; rail with turned balusters. Single leaf ¾ glazed wood door with transom and ¾ sidelights. Tall paired tripartite windows. Three-front bay off west elevation.

**United States Department of the Interior  
National Park Service**

**NATIONAL REGISTER OF HISTORIC PLACES  
CONTINUATION SHEET**

Section:

Page: 3

West Point Unified Historic District  
Clay County, Mississippi

---

Section 8. Statement of Significance

The three houses on the north side of the 100 block of West Broad Street illustrate the growth and development of a residential neighborhood west of the central core of the city. The houses at 117 West Broad and 133 West Broad were built in the mid-1880s with both houses shown on the 1894 Sanborn map. The 1880s and early 1890s represented a prosperous time in West Point. The city recovered from a large downtown fire in 1892 with brick commercial buildings replacing frame buildings that fell victim to the fire. Although a railroad had originally arrived in 1857, the Georgia Pacific Railway was built through the city in 1897 bringing even more rail traffic. The decade of the 1890s saw the introduction of electricity, telephones and paved and lighted streets. The vigorous commercial growth sparked residential development with many fine homes built along East Broad Street and East Main Street. More modest homes were built for the growing middle class and the homes in the 100 block of East Broad Street are representative of this. The houses were built on large lots and originally had several outbuildings. Over time the outbuildings were demolished or converted to garages or carports. The lot at 117 West Broad Street was subdivided with the smaller house at 123 West Broad Street first appearing on the 1918 Sanborn map.

Section 10. Geographical Data

Acreage: Less than one

Verbal Boundary Description:

A line beginning at the northeast corner of the intersection of West Broad Street and High Street in the City of West Point, Clay County, Mississippi and proceeding north to the north property line of the house located at 117 W. Broad Street; turning 90° to the east and proceeding east along the north property lines of the houses at 117 W. Broad Street, 123 W. Broad Street and 133 W. Broad Street to the northeast corner of the property line of the house at 133 W. Broad Street; turning 90° to the south and running south along the east property line of the house at 133 W. Broad Street until it intersects with the north edge of West Broad Street; turning 90° to the west and running along the south property lines of the houses located at 117 W. Broad Street, 123 W. Broad Street, and 133 W. Broad Street to the beginning point at the northeast corner of the intersection of West Broad Street and High Street in the City of West Point, Clay County, Mississippi.

Boundary Justification:

The rectangle described above contains the three city lots historically associated with the houses at 117 W. Broad Street, 123 W. Broad Street and 133 W. Broad Street, City of West Point, Clay County, Mississippi.

**United States Department of the Interior  
National Park Service**

**NATIONAL REGISTER OF HISTORIC PLACES  
CONTINUATION SHEET**

Section:                      Page: 4                      West Point Unified Historic District  
Clay County, Mississippi

---

Section 11. Form Prepared By

Todd Sanders, Architectural Historian  
William M. Gatlin, Architectural Historian  
Mississippi Department of Archives and History  
P.O. Box 571  
Jackson, MS 39202-0571  
601-576-6951  
[wgatlin@mdah.state.ms.us](mailto:wgatlin@mdah.state.ms.us)

Photographs

Name of Property: West Point Unified Historic District Amendment No. 1 (Boundary Increase)

City: West Point

County: Clay    State: Mississippi

Photographer: Laura Stewart

Date of Photograph:    September 21, 2011

Photograph 0001:    133 West Broad Street, West Point, Clay County, MS

Photograph 0002:    123 West Broad Street, West Point, Clay County, MS

Photograph 0003:    117 West Broad Street, West Point, Clay County, MS

United States Department of the Interior  
National Park Service

NATIONAL REGISTER OF HISTORIC PLACES  
CONTINUATION SHEET

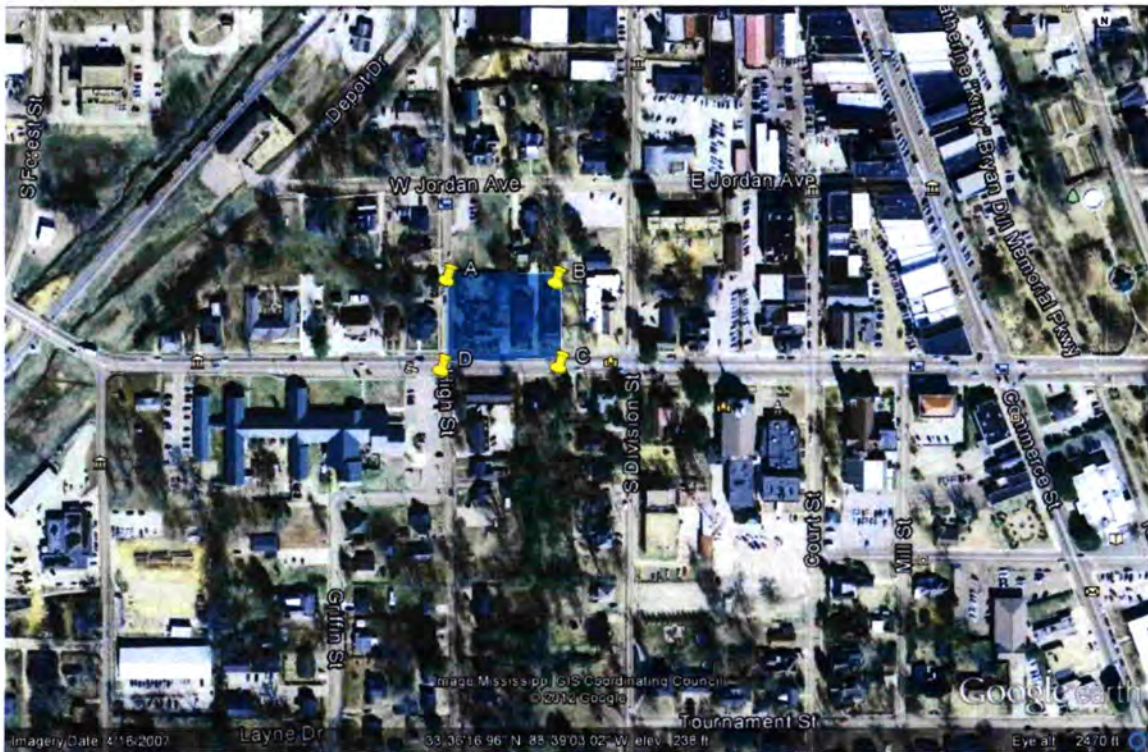
Section:

Page: 5

West Point Unified Historic District  
Clay County, Mississippi

Datum: WGS 84

- A: W 33.361817/ N 88.390876
- B: W 33.361941/ N 88.390456
- C: W 33.361696/ N 88.390302
- D: W 33.361705/ N 88.390691



UNITED STATES DEPARTMENT OF THE INTERIOR  
NATIONAL PARK SERVICE

NATIONAL REGISTER OF HISTORIC PLACES  
EVALUATION/RETURN SHEET

REQUESTED ACTION: NOMINATION

PROPERTY NAME: West Point Unified Historic District (Boundary Increase)

MULTIPLE NAME:

STATE & COUNTY: MISSISSIPPI, Clay

DATE RECEIVED: 06/08/12 DATE OF PENDING LIST:  
DATE OF 16TH DAY: DATE OF 45TH DAY: 07/25/12  
DATE OF WEEKLY LIST:

REFERENCE NUMBER: 12000561

REASONS FOR REVIEW:

APPEAL: N DATA PROBLEM: N LANDSCAPE: N LESS THAN 50 YEARS: N  
OTHER: N PDIL: N PERIOD: N PROGRAM UNAPPROVED: N  
REQUEST: N SAMPLE: N SLR DRAFT: N NATIONAL: N

COMMENT PERIOD WAIVED: N REDUCED: N

ACCEPT  RETURN  REJECT 7-25-11 DATE

ABSTRACT/SUMMARY COMMENTS:

RECOM./CRITERIA Accept

REVIEWER Edson Beall

DISCIPLINE History

Phone \_\_\_\_\_

Date 7-25-11

DOCUMENTATION see attached comments Y/N see attached SLR Y/N

If a nomination is returned to the nominating authority, the nomination is no longer under consideration by the National Park Service.



MS - Clay County - West Point Unified Historic District Amendment No. 1 - 0001



MS - Clay County West Point Unified Historic District Amendment No 1-0002

Epson  
Professional Paper

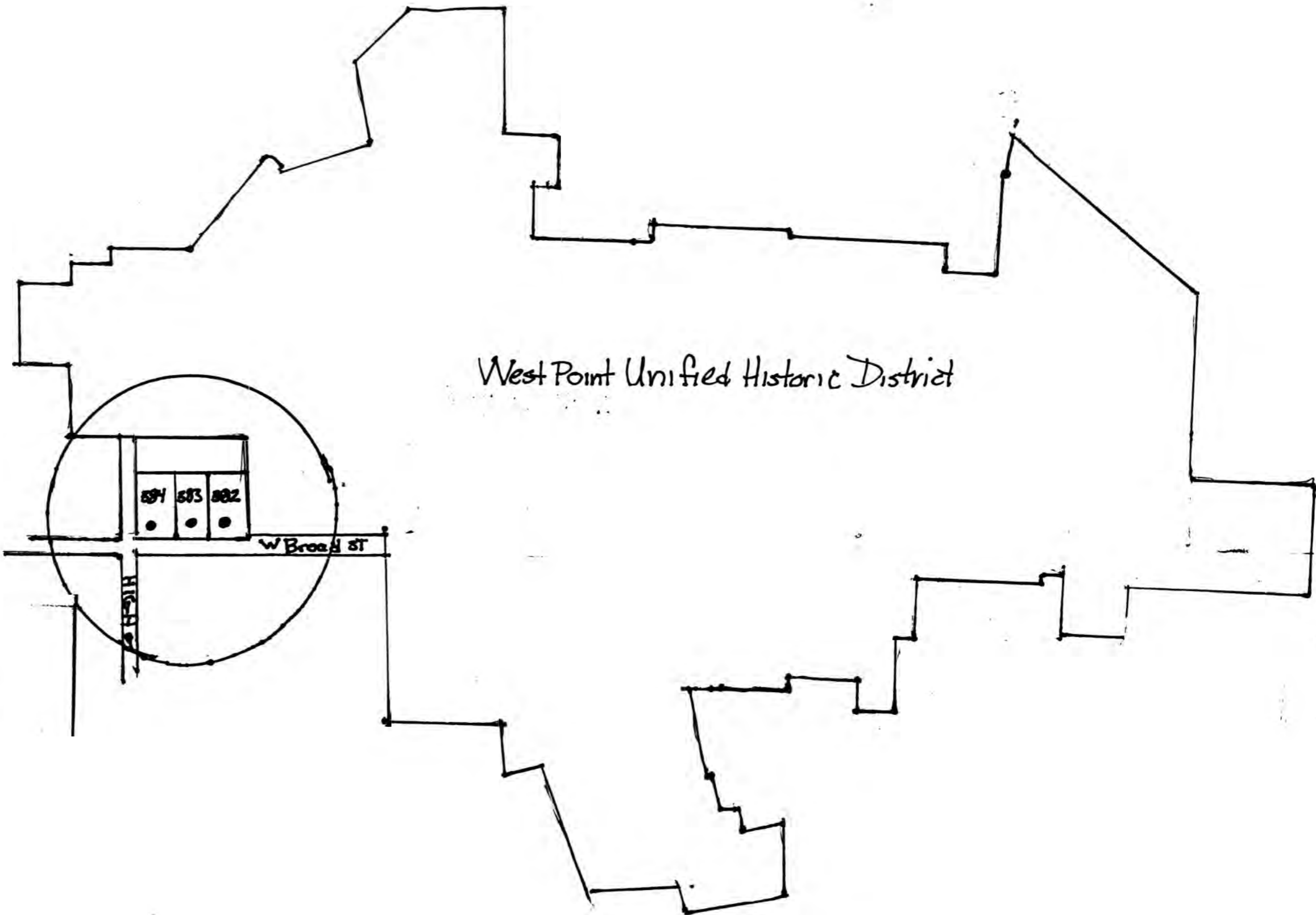
EPSON

EPSON

Epson  
Professi



MS - Clay County West Point Unified Historic District Amendment No 1 - 0003



West Point Unified Historic District

Amendment No. 1  
West Point Unified  
Historic District



● Contributing



May 29, 2012

Ms. Carol Shull  
Keeper of the National Register of Historic Places  
National Park Service  
1201 Eye Street, NW (2280)  
Washington, D.C. 20005

Dear Ms. Shull:

We are pleased to enclose the nomination form and supporting documents to nominate the following properties to the National Register of Historic Places:

West Point Unified Historic District, Amendment No. 1, West Point, Clay County

The property was approved for nomination by the Mississippi Historic Preservation Professional Review Board at its meeting on May 17, 2012.

We trust you will find the enclosed materials in order and will let us hear from you at your convenience.

Sincerely,

A handwritten signature in cursive script that reads "H.T. Holmes".

H.T. Holmes  
State Historic Preservation Officer

By: William M. Gatlin

National Register Coordinator