

United States Department of the Interior
National Park Service

National Register of Historic Places
Registration Form



1275
OMB No. 10024-0018

This form is for use in nominating or requesting determinations for individual properties and districts. See instructions in *How to Complete the National Register of Historic Places Registration Form* (National Register Bulletin 16A). Complete each item by marking "x" in the appropriate box or by entering the information requested. If an item does not apply to the property being documented, enter "N/A" for "not applicable." For functions, architectural classification, materials, and areas of significance, enter only categories and subcategories from the instructions. Place additional entries and narrative items on continuation sheets (NPS Form 10-900a). Use a typewriter, word processor, or computer, to complete all items.

1. Name of Property

historic name Mulberry River Bridge

other names/site number FR0192/ AHTD #01789

2. Location

street & number Arkansas Highway 23

☐ not for publication

city or town Turner's Bend

☒ vicinity

state Arkansas code AR county Franklin code 047 zip code _____

3. State/Federal Agency Certification

As the designated authority under the National Historic Preservation Act, as amended, I hereby certify that this ☒ nomination ☐
request for determination of eligibility meets the documentation standards for registering properties in the National Register of Historic
Places and meets the procedural and professional requirements set for in 36 CFR Part 60. In my opinion, the property ☒ meets ☐
does not meet the National Register criteria. I recommend that this property be considered significant

☐ nationally ☐ statewide ☒ locally. (See continuation sheet for additional comments.)

Cashie Matthews
Signature of certifying official/Title

11/15/06
Date

Arkansas Historic Preservation Program

State or Federal agency and bureau

In my opinion, the property ☒ meets ☐ does not meet the National Register criteria. (☐ See Continuation sheet for additional comments.)

Signature of certifying official/Title

Date

State or Federal agency and bureau

4. National Park Service Certification

I hereby certify that the property is:

☒ entered in the National Register.

☐ See continuation sheet

☐ determined eligible for the
National Register.

☐ See continuation sheet

☐ determined not eligible for the
National Register.

☐ removed from the National
Register.

☐ other, (explain:)

Edson H. Beall
Signature of the Keeper

1-24-07
Date of Action

Mulberry River Bridge
Name of Property

Franklin County, Arkansas
County and State

5. Classification

Ownership of Property
(Check as many boxes as apply)

- ☐ private
☒ public-local
☐ public-State
☐ public-Federal

Category of Property
(Check only one box)

- ☐ building(s)
☐ district
☐ site
☒ structure
☐ object

Number of Resources within Property
(Do not include previously listed resources in count.)

Contributing Noncontributing

	buildings
	sites
1	structures
	objects
1	Total

Name of related multiple property listing
(Enter "N/A" if property is not part of a multiple property listing.)

Historic Bridges of Arkansas

**Number of Contributing resources previously listed
in the National Register**

6. Function or Use

Historic Functions
(Enter categories from instructions)

TRANSPORTATION/road-related(vehicular)/bridge

Current Functions
(Enter categories from instructions)

TRANSPORTATION/road-related(vehicular)/bridge

7. Description

Architectural Classification
(Enter categories from instructions)

Other/ Parker Pony truss

Materials
(Enter categories from instructions)

foundation Concrete

walls

roof

other Steel

Narrative Description

(Describe the historic and current condition of the property on one or more continuation sheets.)

United States Department of the Interior
National Park Service

National Register of Historic Places Continuation Sheet

Section number 7 Page 1

Summary

Located on AR Highway 23 in Franklin County the Mulberry River Bridge crosses the Mulberry River on AR Highway 23 and is a classic example of a Parker Pony truss bridge. The bridge has three spans with the total length of 446 feet. It is located in the Turner's Bend vicinity.

Elaboration

Located north of Turner's Bend on Arkansas Highway 23, the Mulberry River Bridge is a steel Parker Pony truss that spans northwest to southeast. The Parker truss was first developed by C.H. Parker through designs that he submitted for patents from 1868 to 1871. It is basically a Pratt truss with an arched top chord. This gives the Parker more strength than the Pratt, and the ability to span greater distances.

Three steel pony trusses were needed to build the Mulberry River Bridge with the main span at 112 feet and the total length of the bridge at 446 feet. The deck has a total width of 20 feet. Each section of the deck rest on concrete piers.

Integrity

No structural alterations have been made to the bridge to compromise its integrity. Its location remains rural, and its setting remains pristine. The bridge still illustrates its original design and materials. In addition, the bridge is still in use for vehicular travel and it continues to serve Franklin County residents.

Mulberry River Bridge

Name of Property

Franklin County, Arkansas

County and State

8. Statement of Significance

Applicable National Register Criteria

(Mark "x" in one or more boxes for the criteria qualifying the property for National Register listing.)

- ☒ **A** Property is associated with events that have made a significant contribution to the broad patterns of our history.
- ☐ **B** Property is associated with the lives of persons significant in our past.
- ☒ **C** Property embodies the distinctive characteristics of a type, period, or method of construction or represents the work of a master, or possesses high artistic values, or represents a significant and distinguishable entity whose components lack individual distinction.
- ☐ **D** Property has yielded, or is likely to yield, information important in prehistory or history.

Criteria Considerations

(Mark "x" in all the boxes that apply.)

Property is:

- ☐ **A** owned by a religious institution or used for religious purposes.
- ☐ **B** removed from its original location.
- ☐ **C** birthplace or grave of a historical figure of outstanding importance.
- ☐ **D** a cemetery.
- ☐ **E** a reconstructed building, object, or structure.
- ☐ **F** a commemorative property
- ☐ **G** less than 50 years of age or achieved significance within the past 50 years.

Levels of Significance (local, state, national)

Local

Areas of Significance (Enter categories from instructions)

Engineering

Transportation

Period of Significance

1935-1957

Significant Dates

1935-1957

Significant Person (Complete if Criterion B is marked)

Cultural Affiliation (Complete if Criterion D is marked)

Architect/Builder

McEachin & McEachin, Inc.

Narrative Statement of Significance

(Explain the significance of the property on one or more continuation sheets.)

9. Major Bibliographical References

Bibliography

(Cite the books, articles, and other sources used in preparing this form on one or more continuation sheets.)

Previous documentation on file (NPS):

- ☐ preliminary determination of individual listing (36 CFR 67) has been requested
- ☐ previously listed in the National Register
- ☐ Previously determined eligible by the National Register
- ☐ designated a National Historic Landmark
- ☐ recorded by Historic American Buildings Survey # _____
- ☐ recorded by Historic American Engineering Record # _____

Primary location of additional data:

- ☒ State Historic Preservation Office
- ☒ Other State Agency
- ☐ Federal Agency
- ☐ Local Government
- ☐ University
- ☐ Other

Name of repository:

Arkansas State Highway & Transportation Department

Mulberry River Bridge
Name of Property

Franklin County, Arkansas
County and State

United States Department of the Interior
National Park Service

National Register of Historic Places Continuation Sheet

Section number 8 Page 1

Summary

The Mulberry River Bridge was built in 1935, and is a great example of a Parker Pony truss. For this reason it is being nominated to the National Register of Historic Places with **local significance** under **Criterion C**; it is one of sixteen Parker pony truss spans left in Arkansas and one of only seven multi-span Parker pony truss spans left. The bridge has a total length of 446 feet, with three steel Parker pony truss spans each measuring 112 feet in length. The bridge is also being nominated under **Criterion A** for its role with the development of automobile travel in Franklin County. It is also being nominated under the multiple properties listing "Historic Bridges of Arkansas" and under the associated historic context "Arkansas Highway and Transportation Department Era: 1923-1939."

Elaboration

Franklin County was the thirty-eighth county formed and was taken from territory from Crawford County in December of 1837. It was named for Benjamin Franklin. The first known white settlements were by French settlers and they settled along the Mulberry River.

In the early days lumbering and coal mining were the principal industries. Farming is a big industry in Franklin County. Ozark is the county seat in the northern part and Charleston is the county seat in the south.

The bridge is located to the northwest of Turner's Bend along Highway 23. Turner's Bend is located to the north of Paradise and these are all located in the Ozark National Forest. The crossing of the Mulberry River at Turner's Bend has been an important crossing for many years, and the current bridge had replaced an old Pratt through truss bridge. The current bridge was built by McEachin and McEachin of Little Rock in conjunction with the Arkansas Highway Commission in 1935. It took 210 days to complete and cost \$50,820.00.

Mulberry River Bridge

Name of Property

Franklin County, Arkansas

County and State

United States Department of the Interior
National Park Service

National Register of Historic Places Continuation Sheet

Section number 8 Page 2

Since the completion of the Mulberry River Bridge in 1935, no structural alterations have been made to the bridge to compromise its integrity. Today, AR 23 remains an important highway in that part of Arkansas, connecting U.S. 71 and I-40 with Eureka Springs, and the Mulberry River Bridge has been a vital crossing on the road for the residents in the area for approximately 80 years. The Mulberry River Bridge remains an important transportation link in the area and a good example of an early twentieth-century Parker pony truss.

Statement of Significance

The Mulberry River Bridge along Arkansas 23, built in 1935, is being nominated to the National Register of Historic Places with **local significance** under **Criterion C** as a good example of a multi-span Parker pony truss, and also for **Criterion A** for its role in early vehicular transportation in Franklin County. It is also being nominated under the multiple properties listing "Historic Bridges of Arkansas" and under the associated historic context "Arkansas Highway and Transportation Department Era: 1923-1939."

Mulberry River Bridge
Name of Property

Franklin County, Arkansas
County and State

United States Department of the Interior
National Park Service

National Register of Historic Places Continuation Sheet

Section number 9 Page 1

Bibliography

“2005 Steel Truss Reevaluation Section of the Arkansas Historic Bridge Inventory: Review and Evaluation Volume III.” Arkansas State Highway and Transportation Department. Copyright 2006. In the files of the Arkansas Historic Preservation Program.

Biographical and Historical Memoirs of Northwestern Arkansas. Chicago, Nashville, and St. Louis: The Goodspeed Publishing Co. 1890.

Canady, Virginia. *Altus, Arkansas: 100 years 1888-1988*. No Publisher. 1988.

Comp, T. Allan and Donald Jackson, “Bridge Truss Types: a Guide to Dating and Identifying.” *History News*. Vol. 32, No.5: May 1977.

Historic Bridges of the Midwest, 27 July 2005, <<http://bridges.midwestplaces.com/ar/franklin/mulberry-23/>>

Mulberry River Bridge
Name of Property

Franklin County, Arkansas
County and State

10. Geographical Data

Acreage of Property Less than one

UTM References

(Place additional UTM references on a continuation sheet.)

1 15 424928 3947643
Zone Easting Northing
2

3
Zone Easting Northing
4

☐ See continuation sheet

Verbal Boundary Description

(Describe the boundaries of the property on a continuation sheet.)

Boundary Justification

(Explain why the boundaries were selected on a continuation sheet.)

11. Form Prepared By

name/title Ashley Whisenhunt/ Intern
organization Arkansas Historic Preservation Program date 8-3-06
street & number 1500 Tower Building, 323 telephone (501) 324-9787
city or town Little Rock state AR zip code 72201

Additional Documentation

Submit the following items with the completed form:

Continuation Sheets

Maps

A USGS map (7.5 or 15 minute series) indicating the property's location

A Sketch map for historic districts and properties having large acreage or numerous resources.

Photographs

Representative black and white photographs of the property.

Additional items

(Check with the SHPO or FPO for any additional items.)

Property Owner

(Complete this item at the request of SHPO or FPO.)

name
street & number telephone
city or town state zip code

Paperwork Reduction Act Statement: This information is being collected for applications to the National Register of Historic Places to nominate properties for listing or determine eligibility for listing, to list properties, and to amend existing listing. Response to this request is required to obtain a benefit in accordance with the National Historic Preservation Act, as amended (16 U.S.C. 470 *et seq.*)

Estimated Burden Statement: Public reporting burden for this form is estimated to average 18.1 hours per response including time for reviewing instructions, gathering and maintaining data, and completing and reviewing the form. Direct comments regarding this burden estimate or any aspect of this form to the Chief, Administrative Services Division, National Park Service, P. O. Box 37127, Washington, DC 20013-7127; and the Office of Management and Budget, Paperwork Reductions Projects (1024-0018), Washington, DC 20303.

Mulberry River Bridge

Name of Property

Franklin County, Arkansas

County and State

United States Department of the Interior
National Park Service

National Register of Historic Places Continuation Sheet

Section number 10 Page 1

Verbal Boundary Description

From a point on the west side of Arkansas 23 10 feet southwest of the southwest corner of the Mulberry River Bridge, proceed northwesterly 475 feet, then proceed northeasterly 40 feet, then proceed southeasterly 475 feet, then proceed southwesterly 40 feet to the point of beginning.

Boundary Justification

This boundary includes the Mulberry River Bridge and its immediate setting.

UNITED STATES DEPARTMENT OF THE INTERIOR
NATIONAL PARK SERVICE

NATIONAL REGISTER OF HISTORIC PLACES
EVALUATION/RETURN SHEET

REQUESTED ACTION: NOMINATION

PROPERTY Mulberry River Bridge
NAME:

MULTIPLE Historic Bridges of Arkansas MPS
NAME:

STATE & COUNTY: ARKANSAS, Franklin

DATE RECEIVED: 12/11/06 DATE OF PENDING LIST: 1/05/07
DATE OF 16TH DAY: 1/20/07 DATE OF 45TH DAY: 1/24/07
DATE OF WEEKLY LIST:

REFERENCE NUMBER: 06001275

REASONS FOR REVIEW:

APPEAL: N DATA PROBLEM: N LANDSCAPE: N LESS THAN 50 YEARS: N
OTHER: N PDIL: N PERIOD: N PROGRAM UNAPPROVED: N
REQUEST: N SAMPLE: N SLR DRAFT: N NATIONAL: N

COMMENT WAIVER: N

☒ ACCEPT ☐ RETURN ☐ REJECT 1-24-07 DATE

ABSTRACT/SUMMARY COMMENTS:

Entered in the
National Register

RECOM./CRITERIA _____

REVIEWER _____ DISCIPLINE _____

TELEPHONE _____ DATE _____

DOCUMENTATION see attached comments Y/N see attached SLR Y/N

If a nomination is returned to the nominating authority, the nomination is no longer under consideration by the NPS.



MULBERRY RIVER BRIDGE

FRANKLIN COUNTY, AR

ZAC COTHREN

APRIL 2005

ARKANSAS HISTORIC PRESERVATION PROGRAM, LITTLE ROCK, AR

VIEW OF THE BRIDGE, LOOKING NORTHWEST

MULBERRY RIVER

LEEACHIN & LEEACHIN, INC.
CONTRACTOR.

ARKANSAS
STATE HIGHWAY COMMISSION
AND THE
UNITED STATES
BUREAU OF PUBLIC ROADS

1935

BRIDGE NO. [REDACTED]

MULBERRY RIVER BRIDGE

FRANKLIN COUNTY, AR

ZAC COTHREN

APRIL 2005

ARKANSAS HISTORIC PRESERVATION PROGRAM, LITTLE ROCK, AR

VIEW OF THE PLAQUE



MULBERRY RIVER BRIDGE

FRANKLIN COUNTY, AR

ZAC COTHREN

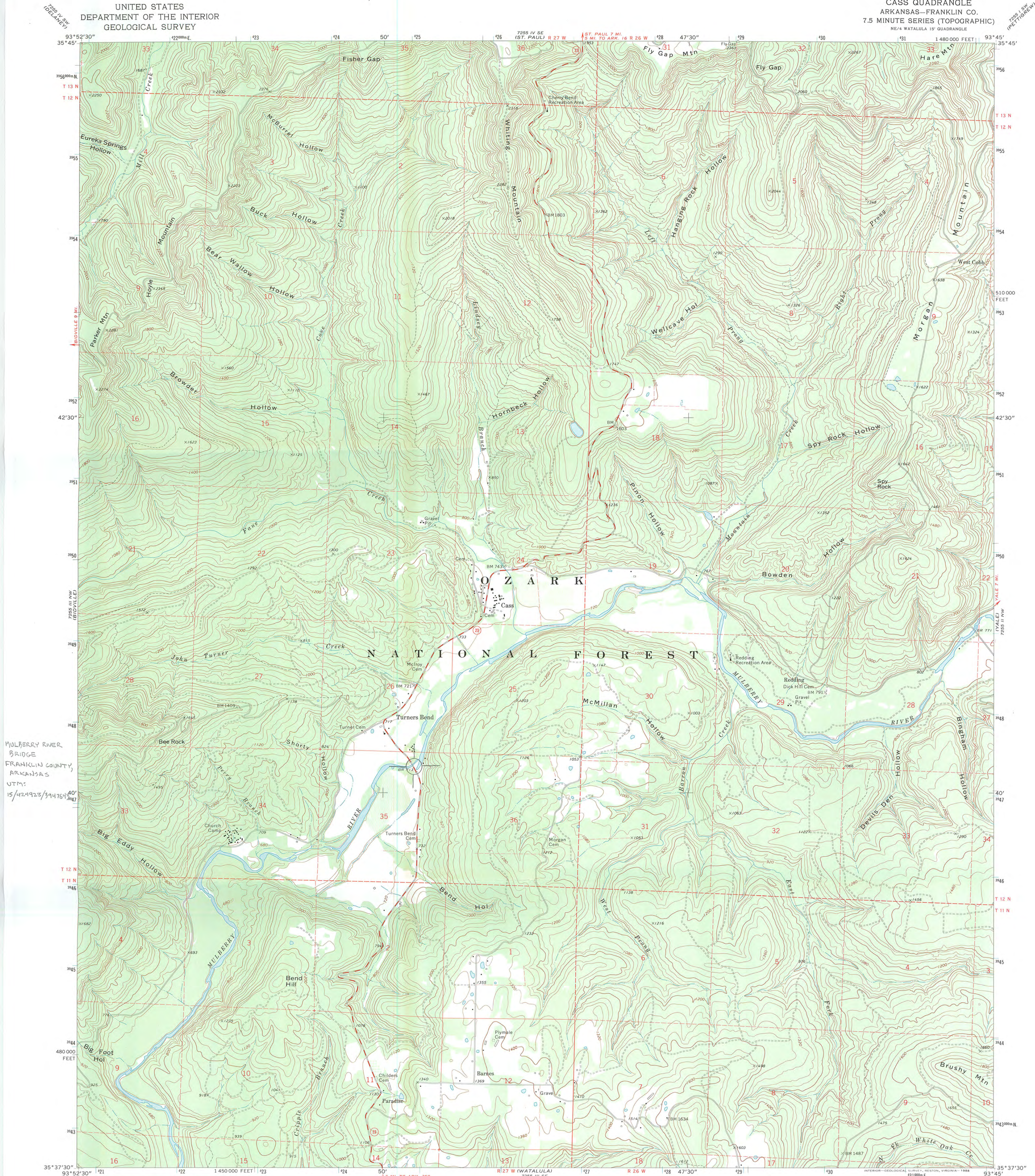
APRIL 2005

ARKANSAS HISTORIC PRESERVATION PROGRAM, LITTLE ROCK, AR

VIEW OF THE BRIDGE, LOOKING WEST

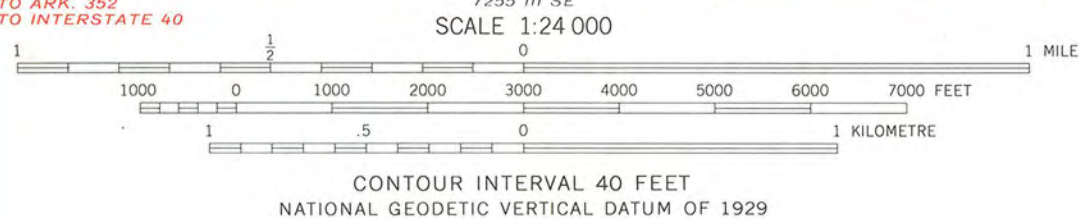
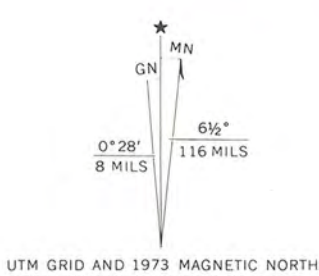
UNITED STATES
DEPARTMENT OF THE INTERIOR
GEOLOGICAL SURVEY

CASS QUADRANGLE
ARKANSAS—FRANKLIN CO.
7.5 MINUTE SERIES (TOPOGRAPHIC)
NE 1/4 WATULULA 15' QUADRANGLE



MULBERRY RIVER
BRIDGE
FRANKLIN COUNTY,
ARKANSAS
UTM:
15/424923/394764

Mapped, edited, and published by the Geological Survey
Control by USGS and NOS/NOAA
Topography by photogrammetric methods from aerial
photographs taken 1972. Field checked 1973
Projection and 10,000-foot grid ticks: Arkansas coordinate
system, north zone (Lambert conformal conic)
1000-metre Universal Transverse Mercator grid ticks,
zone 15, shown in blue. 1927 North American datum
Fine red dashed lines indicate selected fence and field lines where
generally visible on aerial photographs. This information is unchecked
To place on the predicted North American Datum 1983,
move the projection lines 10 meters south and
18 meters east as shown by dashed corner ticks



ROAD CLASSIFICATION
Primary highway, hard surface
Secondary highway, hard surface
Unimproved road
Interstate Route
U.S. Route
State Route

CASS, ARK.
NE 1/4 WATULULA 15' QUADRANGLE

1973
DMA 7255 III NE—SERIES V884





The Department of Arkansas Heritage

Mike Huckabee, Governor
Cathie Matthews, Director

Arkansas Arts Council

Arkansas Natural Heritage
Commission

Delta Cultural Center

Historic Arkansas Museum

Mosaic Templars
Cultural Center

Old State House Museum



Arkansas Historic Preservation Program

1500 Tower Building
323 Center Street
Little Rock, AR 72201
(501) 324-9880
fax: (501) 324-9184
tdd: (501) 324-9811

e-mail: info@arkansaspreservation.org

website:

www.arkansaspreservation.org

An Equal Opportunity Employer



December 6, 2006

Dr. Janet Matthews
Chief of Registration
United States Department of the Interior
National Register of Historic Places
National Park Service
8th Floor
1201 Eye Street, NW
Washington, DC 20005

RE: Mulberry River Bridge – Turner's Bend vic., Franklin
County, Arkansas

Dear Dr. Matthews:

We are enclosing for your review the above-referenced nomination. The Arkansas Historic Preservation Program has complied with all applicable nominating procedures and notification requirements in the nomination process.

If you need further information, please call Ralph S. Wilcox of my staff at (501) 324-9787. Thank you for your cooperation in this matter.

Sincerely,

Cathie Matthews
State Historic Preservation Officer

CM:rsw

Enclosure