



1/45 Wakulla Springs Archeological + Historic District
Wakulla Co., FL



3/45

Wakulla Springs Archeological + Historic District

Wakulla Co., FL



3/4
Wakulla Springs Archaeological + Historic District

Wakulla Co., FL



4/45 Wakulla Springs Archeological + Historic District

Wakulla Co., FL



9/45 Wakulla Springs Archaeological + Historic District

Wakulla Co., FL



6/45 Wakulla Springs Archaeological + Historic District

Wakulla Co., FL



7/45

Wakulla Springs Archaeological + Historic District

Wakulla Co., FL



8/45

Wakulla Springs Archaeological + Historic District

Wakulla Co., FL



92 6 19

10/45

Wakulla Springs Archaeological + Historic Dist.

Wakulla Co., FL



11/45

Wakulla Springs Archaeological + Historic District

Wakulla Co., FL



13/45

Wakulla Springs Archaeological + Historic District

Wakulla Co., FL



13/45

Wakulla Springs Archaeological + Historic District

Wakulla Co., FL



14/45

Wakulla Springs Archaeological + Historic District

Wakulla Co., FL



15/45

Wakulla Springs Archaeological & Historic District

Wakulla Co., FL



16/45
Wakulla Springs Archaeological + Historic District

Wakulla Co., FL



17/45
Wakulla Springs Archaeological + Historic District

Wakulla Co., FL



18/45
Wakulla Springs. Archaeological + Historic District

Wakulla Co., FL



519

19/25

Wakulla Springs. Archaeological + Historic District

Wakulla Co., FL

92 6 19



20/45

Wakulla Springs. Archaeology and Historic District

Wakulla Co., FL

92 6 19



2/1/45

Wakulla Springs. Archaeological + Historic Dist.

Wakulla Co., FL

92 6 19



22/45

Wakulla Springs. Archaeological + Historical Dist.

Wakulla Co., FL



23/45

Wakulla Springs Archaeological + Historic District

Wakulla Co., FL

61 9 26



24/48

Wakulla Springs. Archaeological + Historic District

Wakulla Co., FL



25/45

Wakulla Springs. *Arctia colligiana* + *Aristonotus* Dist.

Wakulla Co., FL



26/45

Wakulla Spgs. Archaeological + Historic District

Wakulla Co., FL



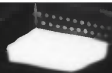
92 6 19

27/45

Wakulla Spgs. Anethasologian + Historic Dist.

Wakulla Co., FL

61 9 26



25/25

Wakulla Spgs. Archaeological + Historic District

Wakulla Co., FL



92 6 19

29/45

Wakulla Spgs. Archæological + Historic District

Wakulla Co., FL



92 6 19

30/45

Wakulla Springs Archaeological + Historic Dist.

Wakulla Co., FL



31/45

Watulla Springs, Arkansas logical + Arizbwe District

Watulla Co., AR



32/45

Wakulla Springs. Archaeological + Historic District

Wakulla Co, FL



92 6 19

33/45

Wakulla Springs Archaeological + Historic District

Wakulla Co., FL



34/45
Wakulla Springs Archaeological + Historic District
Wakulla Co., FL



DANGER
ELECTRIC CURRENT
M.V.T. 81- 600 2

4
5
19

35/45
Wakulla Springs Archaeology, cul + Historic Dist.
Wakulla Co., FL



36/45 Wakulla Springs Archaeological + Historical District
Wakulla Co., FL



37/45 Wakulla Springs Archaeological + Historic District

Wakulla Co., FL



38/45

Wakulla Springs Archaeological + Historic District

Wakulla Co., FL



39/45
Wakulla Springs Archaeological + Historic District

Wakulla Co., FL



40/45
Wakulla Springs Archeological + Historic District

Wakulla Co., FL



4/1/45

Wakulla Springs Archaeological + Historic District

Wakulla Co., FL



42/15
Wakulla Springs Archeological + Historic District
Wakulla Co., FL



4/3/45
Wakulla Springs Archaeological + Historic District
Wakulla Co., FL



~~44~~
~~45~~ Wakulla Springs Archaeological + Historic District
Wakulla Co., FL



45/45 Wakulla Springs Archaeological + Historic District

Wakulla Co., FL



WAKULLA SPRINGS AND LODGE

WAKULLA SPRINGS, FLORIDA 32305

(904) 640-7011

"FLORIDA'S FINEST NATURAL ATTRACTION"

POST
CARD
RATE

Litho in U.S.A.

Postcard #1

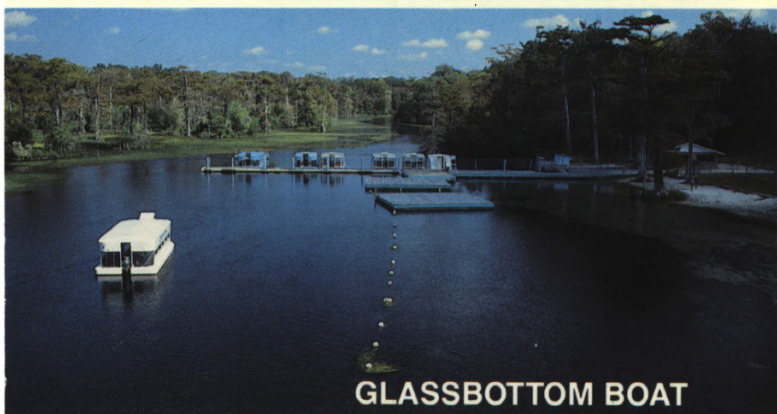
Wakulla Springs
Archaeological +
Historic District
Wakulla Co., FL

Dist. by Aerial Art Co., Tallahassee, FL

POST CARD

WAKULLA SPRINGS

14 Miles South of Tallahassee, Florida
Florida's Finest Natural Attraction



GLASSBOTTOM BOAT



JUNGLE BOAT



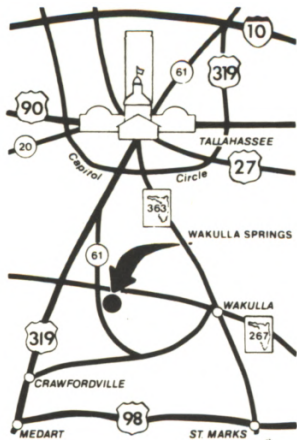
HOTEL



LOBBY



DINING ROOM



Wakulla Springs and Lodge



Tallahassee (904) 224-5950
Wakulla Springs (904) 640-7011

901577

"Florida's Finest Natural Attraction"

Jungle Boat Tours — down the wild, scenic Wakulla River. See a multitude of wildlife in their natural habitat.

Glass-Bottom Boat Tours — over the world's largest, deepest spring. See "Henry," the pole-vaulting fish.

Floating Theatre — a film voyage to the mysterious underwater world of Wakulla Springs cavern.

Lodging, Dining, Gift Shop, Picnic Area, Nature Trails, Swimming in season. Bring your camera. Open year 'round.

WAKULLA SPRINGS AND LODGE

Wakulla Springs, Florida 32305

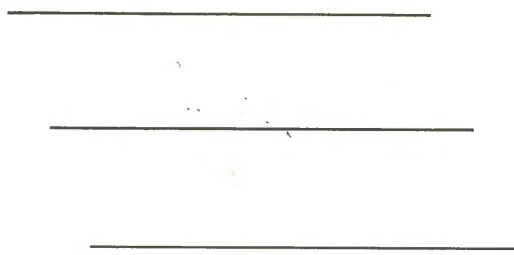
LETTER
RATE
POSTAGE
REQUIRED
Litho in U.S.A.

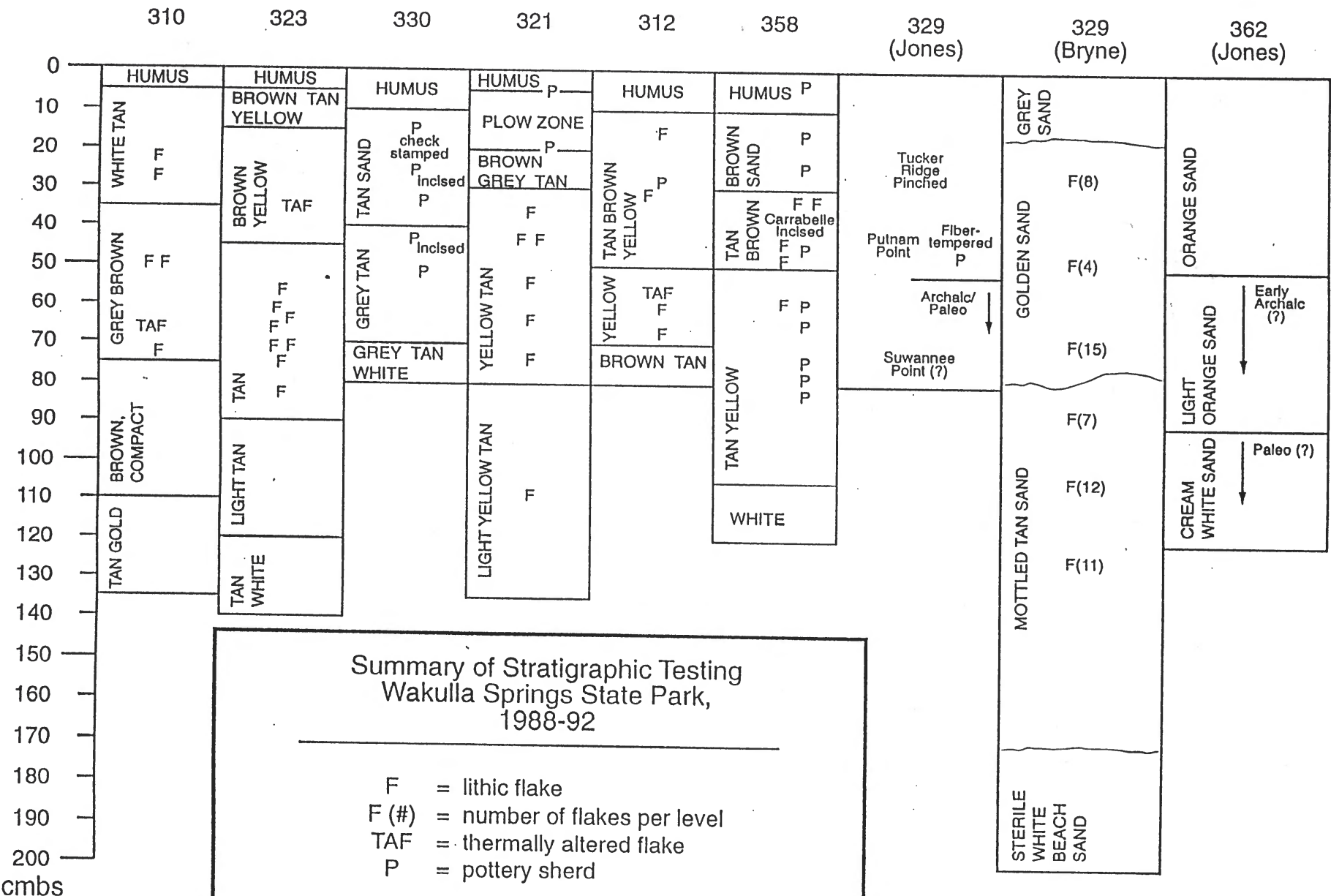
FIRST CLASS

Postcard # 2

*Wakulla Springs
Archaeological +
Historic District
Wakulla Co., FL*

© Wilderness Graphics, Inc., Tallahassee, FL





Summary of Stratigraphic Testing
Wakulla Springs State Park,
1988-92

F = lithic flake
 F (#) = number of flakes per level
 TAF = thermally altered flake
 P = pottery sherd

Depths in centimeters below surface (cmbs).
 No horizontal scale intended. See text for discussion.

Figure 1

Figure 2.

Prehistoric ceramics recovered by the survey.

- a - Norwood Fiber-tempered (88059-12), 8WA353, ST 12
- b - Deptford Simple Stamped (88081-21), Artifact Occurrence 13,
ST 28
- c - Deptford Simple Stamped (88027-11), 8WA321, ST 11
- d - Deptford Linear Check Stamped (88064-22), 8WA358, ST 22.
- e - Weeden Island Plain (88036-A2), 8WA330, AT 2
- f - Carabelle Punctated (88015-40), 8WA309, ST 40
- g - Weeden Island Red (88015-36), 8WA309, ST 36
- h - Carabelle Incised (88036-A5), 8WA330, AT 5
- i - Weeden Island Incised (88036-A5), 8WA330, AT 5
- j - Carabelle Punctated (88036-A5), 8WA330, AT 5
- k - Weeden Island Punctated (88015-16), 8WA309, ST 16
- l - Wakulla Check Stamped (88036-A4), 8WA330, AT 4
- m - Wakulla Check Stamped (88015-21), 8WA309, ST 21
- n - Fort Walton Incised (88027-3), 8WA321, ST 3
- o - Fort Walton Incised (88027-22), 8WA321, ST 22
- p - Fort Walton Incised (88027-0), 8WA321, Surface
- q - Lake Jackson Plain fluted rim (88027-0), 8WA321, Surface
- r - Lamar Complicated Stamped, var. Early (88028-0B), 8WA322,
Surface of Area B
- s - Chattahoochee Brushed (88018-0), 8WA312, Surface
- t - Chattahoochee Brushed (88018-0), 8WA312, Surface

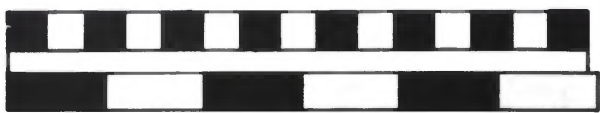
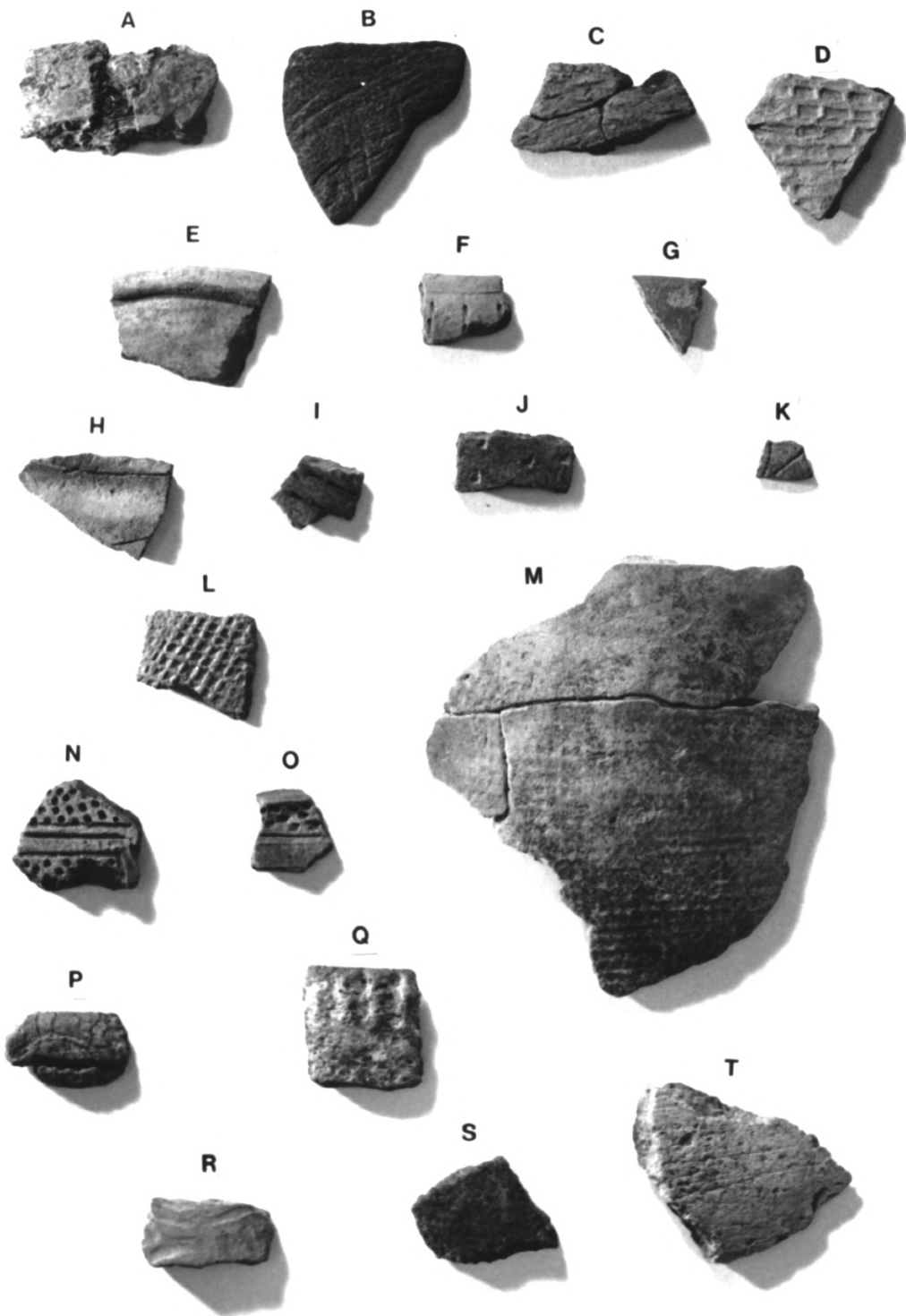


Figure 2

Wakulla Springs Archaeological & Historic District

Wakulla Co., FL

Figure 3.

- Prehistoric lithic artifacts recovered by the survey.
- a - Oblong Scraper (88035-0B), 8WA329, Surface of Area B
 - b - Wacissa Point (88016-0), 8WA310, Surface
 - c - Resharpened (88035-54), 8WA329, ST 54
 - d - Resharpened Newnan Point (88049-92), 8WA343, ST 92
 - e - Middle Archaic Contracting Stem Point (88028-0B), 8WA322,
Surface of Area B
 - f - Putnam Point (88071-0), Artifact Occurrence 3, Surface
 - g - Putnam-like Point (88018-0), 8WA312, Surface
 - h - Hernando Point (88065-12), 8WA359, ST 12
 - i - Bradford Point (88059-11), 8WA353, ST 11
 - j - Graver (88056-0), 8WA350, Surface
 - k - Late Archaic Lafayette Point base (88019-0), 8WA313, Surface
 - l - Biface (88043-22), 8WA337, ST 22
 - m - Chert Hammerstone (88016-0), 8WA310, Surface
 - n - Silicified Coral Hammerstone fragment (88055-0), 8WA349,
Surface
 - o - Limestone Grinding Bowl (88068), 8WA362

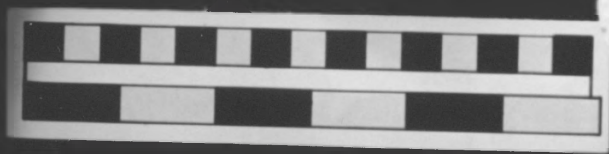


Figure 3

Wakulla Springs Archaeological & Historic District

Wakulla Co., FL

Figure 4.

Turpentine-related artifacts recovered by the survey.

a - Herty Cup, fluted tapering cylindrical ceramic bucket
fragment (88025-0), 8WA3319, Surface

b - Three nested galvanized buckets (88025-0), 8WA319, Surface

c - Cylindrical galvanized bucket (88025-0), 8WA319, Surface

d - Rectangular ceramic bucket fragment (88025-0), 8WA319,
Surface

e - Rectangular galvanized bucket fragment (88025-0), 8WA319,
Surface



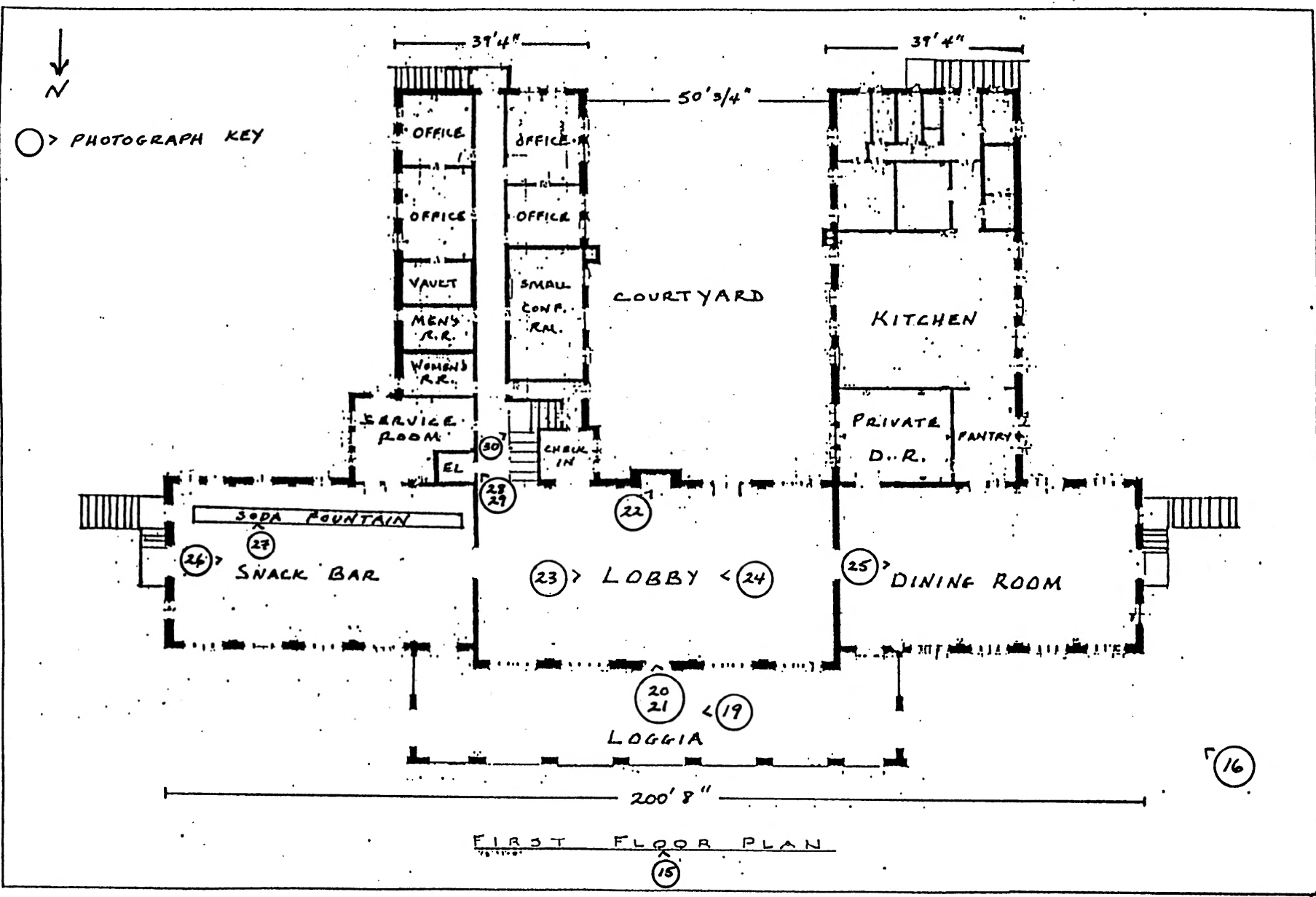
Figure 4

Wakulla Springs Archaeological & Historic District

Wakulla Co., FL

14

17



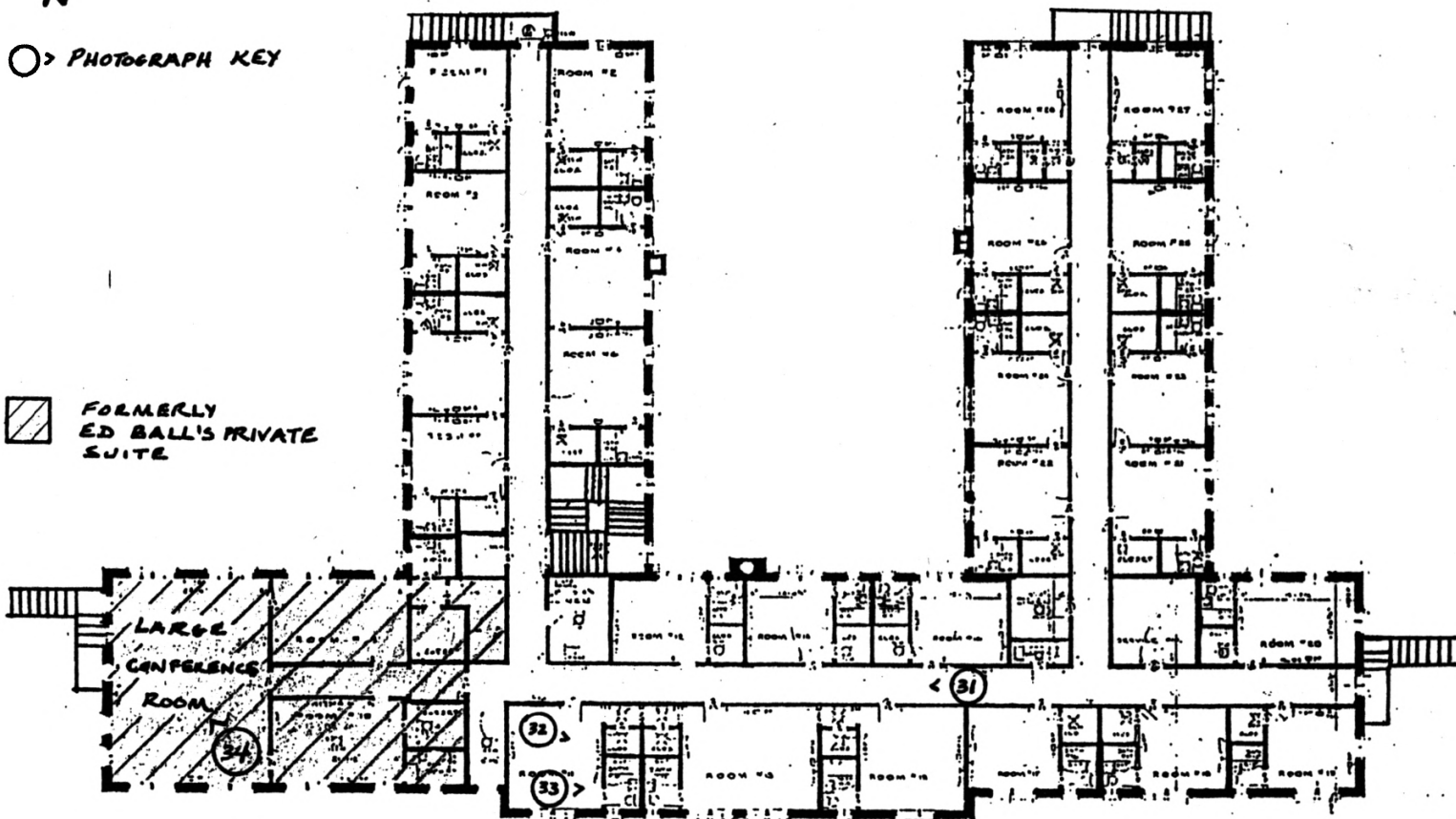
WAKULLA SPRINGS LODGE

Fig. 5



○ > PHOTOGRAPH KEY

▨ FORMERLY
ED BALL'S PRIVATE
SUITE



SECOND FLOOR PLAN

WAKULLA SPRINGS LODGE

Fig. 6