



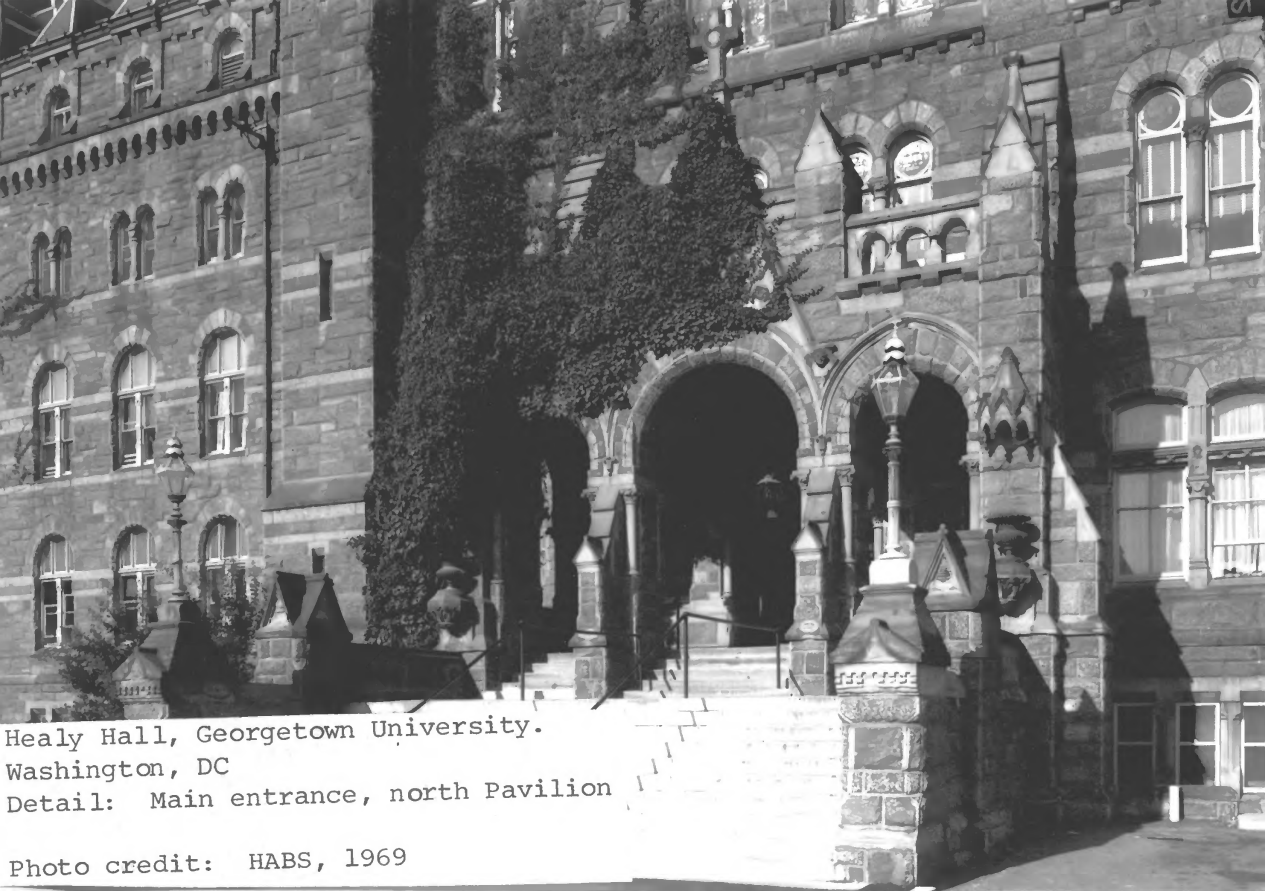
Healy Hall, Georgetown University.
Washington, DC
Detail: East Facade

Photo credit: HABS, 1969



Healy Hall, Georgetown University.
Washington, DC
Detail: East Elevation

Photo credit: HABS, 1969



Healy Hall, Georgetown University.

Washington, DC

Detail: Main entrance, north Pavilion

Photo credit: HABS, 1969




Healy Hall, Georgetown University
Washington, DC
Detail: East facade

Photo credit: HABS, 1969



Healy Hall, Georgetown University
Washington, DC
Detail: First floor corridor

Photo credit: HABS, 1969

A black and white photograph of the interior of Gaston Hall at Georgetown University. The room is a large auditorium with rows of seats in the foreground. The stage is at the far end, featuring a large, ornate mural depicting a religious scene. The architecture is Gothic Revival, with pointed arches and decorative elements. The ceiling is high and appears to be made of wood. The lighting is dramatic, with the stage area being the brightest part of the room.

Healy Hall, Georgetown University.
Washington, DC
Detail: Interior, Gaston Hall

Photo credit: HABS, 1969



Healy Hall, Georgetown University
Washington, DC
Detail: Riggs Memorial Library.
South wing

Photo credit: HABS, 1969



Healy Hall, Georgetown University
Washington, DC
Detail: Main stair, north pavilion

Photo credit: HABS, 1969