



1. Baker (Horace) Log Cabin,
2. Carver vicinity
3. Robert Sutton
4. 4/1976
5. Oregon State Parks Branch
6. Baker cabin, showing cantilevered loft system, exterior stairway, front and side of cabin, looking NW
7. # 1 of 7
Clackamas County, Oregon

DEC 12 1976

PROPERTY OF THE NATIONAL REGISTER

SEP 13 1976

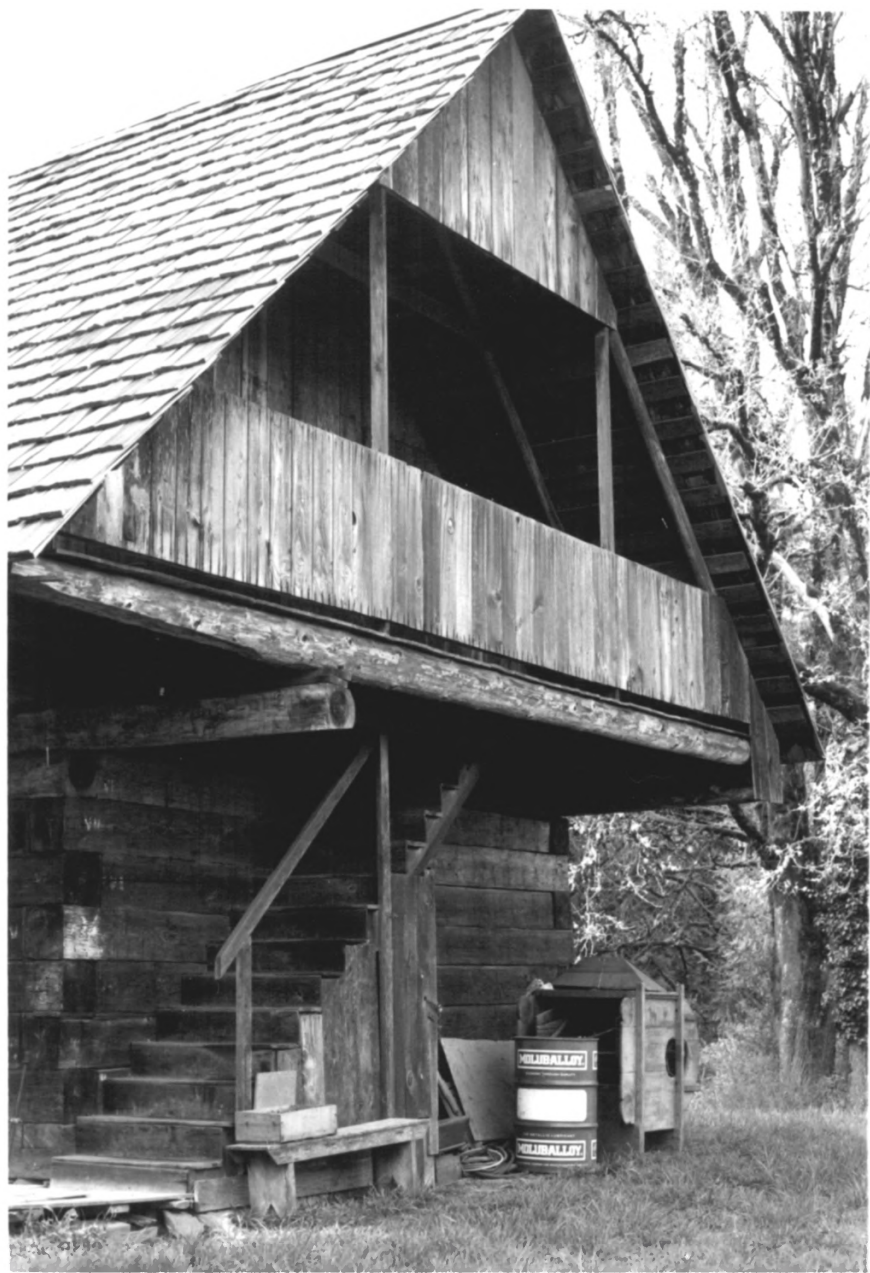



SEP 13 1976

1. Baker (Hracc) Log Cabin
 2. Corner vicinity
 3. Robert Sutton
 4. 4/1976
 5. Oregon State Parks Branch
 6. NE corner of cabin, showing
lepped log detail and cantilevered
beam to support the porch for
the loft, looking SW
 7. #2 of 7
- Clackamas County, Oregon

PROPERTY OF THE NATIONAL REGISTER

DEC 12 1976



1. Baker (Horace) Leg Cabin
 2. Camera vicinity
 3. Robert Suda
 4. 4/1976
 5. Oregon State Parks Branch
 6. E. exposure of Cabin, showing
loft porch, exterior stairway,
and cantilever system, looking
N.W.
 7. #3 of 7 
- Clackamas County, Oregon

SEP 13 1976



1. Baker (Horace) Log Cabin
2. Camera vicinity
3. Robert Sutton
4. 4/1976
5. Oregon State Parks Branch
6. W. & front view of cabin, showing board & batten wall on loft, chimney and front porch, looking NE
7. # 4 of 7
Clackamas County, Oregon

PROPERTY OF THE NATIONAL REGISTER

DEC 12 1976

SEP 13 1976



1. Baker (Horace) Log Cabin
2. Corner vicinity
3. Robert Sutton
4. 4/1976
5. Oregon State Parks Branch
6. Rear and west exposure of cabin, looking
SE
7. # 5 of 7
Clackamas County, Oregon

PROPERTY OF THE NATIONAL REGISTER

DEC 12 1976

SEP 13 1976



1. Baker (Horace) Log Cabin
 2. Corner vicinity
 3. Robert Sutton
 4. 4/1976
 5. Oregon State Parks Branch
 6. West exposure of cabin,
looking S.
 7. # 6 of 7 07
- Clackamas County, Oregon

SEP 13 1976



SEP 13 1976

1. Baker (Hrace) Log Cabin
 2. Corner vicinity
 3. Robert Sutton
 4. 4/1976
 5. Oregon State Parks Branch
 6. SW corner of cabin, showing
lapping detail of logs and
loose rock foundation
 7. # 7 of 7
- C. Jackson County, Oregon

PROPERTY OF THE NATIONAL REGISTER DEC 12 1976