



HOTEL

LESLIE

CHAMBER OF COMMERCE

COFFEE SHOP

NO U TURN

FORD

Nebraskan (Leslie) Hotel (NCHBS # NU13-703)

Superior Downtown Historic District

Superior, Nuckolls County, Nebraska

Photo by Rita Blauvelt, Superior

August 1993

East Facade Looking Southwest

Photo 1 of 19



SUPERIOR

AMERICAN CHARTER

AMERICAN CHARTER

HOTEL  
LESLIE

Bank of Superior / Opera House (NCHBS# NU13-004)

Dahlgren Building 411 North Central Avenue (NCHBS# NU13-704)

429 North Central Avenue (Non-Contributing)

Nebraskan (Leslie Hotel) Hotel (NCHBS# NU13-703)

Superior Downtown Historic District

Superior, Nuckolls County, Nebraska

Photo by Rita Blauvelt, Superior

August 1993

View looking Northwest

Photo 2 of 19



SUPERIOR

AMERICAN  
CHARTER

AMERICAN  
CHARTER

The Lumber Co.

L L

Bank of Superior/Opera House (Ne HBS # NU13-004)

Superior Downtown Historic District

Superior, Nuckolls County, Nebraska

Photo by Rita Blauvelt, Superior

August 1993

South and East Facade looking Northwest

Photo 3 of 19



The Ole Shoe Market

LAMPPOST MALL

Magnavox  
THE HOUSE OF MUSIC

Amending  
carpets  
to  
order

SNB

305 North Central Avenue (Non-Contributing)

Laird Building (NCHBS# NU13-710)

Brodstone Building (NCHBS# NU13-709)

Hunter Block (NCHBS# NU13-708)

Kendall Building (NCHBS# NU13-707)

W. S. Young Building (NCHBS# NU13-706)

341 North Central Avenue (Non-Contributing)

355 North Central Avenue (Non-Contributing)

Superior Downtown Historic District

Superior, Nuckolls County, Nebraska

Photo by Rita Blauvelt, Superior

August 1993

View looking Northwest

Photo 4 of 19





HUNTER  
BLOCK

1333

Eckmann  
679-4134  
For Sale

L  
U  
T  
E

AMINO ACTIVITIES

Home  
DECORATING

Hunter Block (NCHBS # NU13-708)

Broadstone Building (NCHBS # NU13-709)

Superior Downtown Historic District  
Superior, Nuckolls County, Nebraska

Photo by Rita Blauvelt, Superior

August 1993

View looking West

Photo 5 of 19



especially for you

ELKS

W. L. ... & Co.

REST

402 North Central Avenue (Non-Contributing)  
The Spohn Building 406-408 North Central Avenue (NeHBS # NU13-745)  
The Dehlgren Building 410-414 North Central Avenue (NeHBS # NU13-746)  
The Jones Building (NeHBS # NU13-747)

430 North Central Avenue (Non-Contributing)

436 North Central Avenue (Non-Contributing)

454 North Central Avenue (Non-Contributing)

Superior Downtown Historic District

Superior, Nuckolls County, Nebraska

Photo by Rita Blauvelt, Superior

August 1993

View looking Northeast

Photo 6 of 19



SUPERIOR  
VISION

*Carmen's*

CENTRAL

Oliver Building (NEHBS#NU13-748)

Superior Downtown Historic District

Superior, Nuckolls County, Nebraska

Photo by Rita Blauvelt, Superior

August 1993

West and North Facade looking Southeast

Photo 7 of 19



WELLS DRIVE  
HEALTH MART

SEW FRANKS

WELLS DRIVE

JCPenney Catalog Merchant

SUPERIOR  
PLUMBING  
HEATING & COOLING

Culinary Arts  
HEATING & AIR CONDITIONING

No Left Turn

302 North Central Avenue (Non-Contributing)

McCorkle Building (NeHBS # NU13-733)

Plummer Building (NeHBS # NU13-753)

Carter Building (NeHBS # NU13-752)

324 North Central Avenue (Non-Contributing)

328-330 North Central Avenue (Non-Contributing)

334 North Central Avenue (Non-Contributing)

Martin Building (NeHBS # NU13-751)

King Building (NeHBS # NU13-750)

Sweet Building (NeHBS # NU13-749)

Oliver Building (NeHBS # NU13-748)

Superior Downtown Historic District

Superior, Nuckolls County, Nebraska

Photo by Rita Blauvelt, Superior

August 1993

View looking Northeast

Photo 8 of 19





Carol's Studio

PHOTOGRAPHY

Jewel  
FABRICS

McCorkle Building (NEHBS # NU 13-733)

Superior Downtown Historic District

Superior, Neuckolls County, Nebraska

Photo by Rita Blauvelt, Superior

August 1993

West Facade looking East

Photo 9 of 19



Cabinet & Mill Work  
WOODING & SAW CONTRACTORS

SUPERIOR  
PLUMBING  
HEATING & COOLING

JCPenney Catalog Merchant

JCPenney Catalog Merchant

MEMBER  
OF SERVICE  
CORPORATION

OPEN  
HOURS

OPEN  
HOURS

McLockle Building (NeHBS # NU13-733)  
302 North Central Avenue (Non-Contributing)

Mullet Building (NeHBS # NU13-730)

Superior Downtown Historic District

Superior, Nuckolls County, Nebraska

Photo by Rita Blauvelt, Superior

August 1993

View looking Northeast

Photo 10 of 19



MULLETS

BUILDING FOR SALE

Mullet Building (NeHBS# NU13-730)

Superior Downtown Historic District

Superior, Nuckolls County, Nebraska

Photo by Rita Blauvelt, Superior

August 1993

South Facade looking North

Photo 11 of 19



Power  
Equipment

Ariens

SUPERIOR  
OUTDOOR POWER CENTER

YAMAHA

170-68070

STIHL  
POWER EQUIPMENT

NA

Elliott and Myers Building (NeHBS # NU13-736)

Superior Downtown Historic District

Superior, Nuckolls County, Nebraska

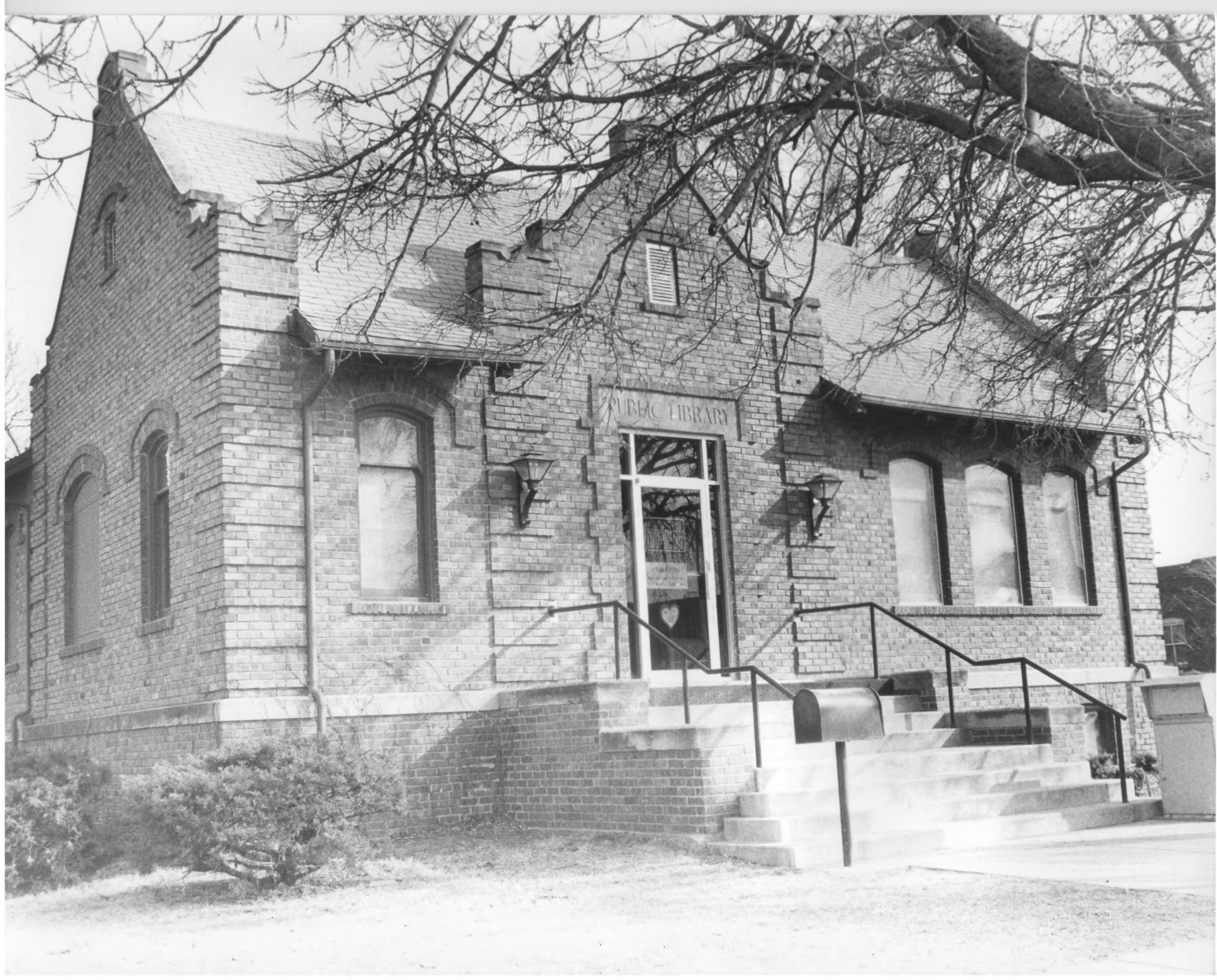
Photo by Rita Blauvelt, Superior

August 1993

West Facade looking Northeast

Photo 12 of 19





Carnegie Library (NEHBS # NU13-738)

Superior Downtown Historic District

Superior, Nuckolls County, Nebraska

Photo by Rita Blauvelt, Superior

August 1993

West and North Facade looking Southeast

Photo 13 of 19



Sidles

Telephone Building (NeHBS# NU13-718)

Bagley Building (NeHBS# NU13-719)

329 North Commercial Avenue (Non-Contributing)

Gate and Laird Building (NeHBS# NU13-757)

317 North Commercial Avenue (Non-Contributing)

311 North Commercial Avenue (Non-Contributing)

Superior Downtown Historic District

Superior, Nuckolls County, Nebraska

Photo by Rita Blauvelt, Superior

August 1993

View looking Southwest

Photo 14 of 19



Telephone Building (NeHBS# NU13-718)

The Dr. Molzahn Building (NeHBS# NU13-743)

Robinson Building (NeHBS# NU13-742)

Mauck Building (NeHBS# NU13-741)

Superior Downtown Historic District

Superior, Nuckolls County, Nebraska

Photo by Rita Blauvelt, Superior

August 1993

View looking Southwest

Photo 15 of 19



Dahlgren Building/I.O.O.F Hall (NeHBS # NU13-724)

Laird Building (NeHBS # NU13-725)

Fogel Block (NeHBS # NU13-726)

Spohn Building 122 East Fourth Street (NeHBS # NU13-727)

402 North Central Avenue (Non-Contributing)

Bank of Superior/Opera House (NeHBS # NU13-004)

Superior Downtown Historic District

Superior, Nuckolls County, Nebraska

Photo by Rita Blauvelt, Superior

August 1993

View looking Northwest

Photo 16 of 19





Fogel Block (NEHBS# NU13-726)  
Superior Downtown Historic District  
Superior, Nuckolls County, Nebraska  
Photo by Rita Blauvelt, Superior  
August 1993

South Facade looking North  
Photo 17 of 19

UNITED STATES POST OFFICE

SUPERIOR, NE.  
68978  
214 E. 4TH. ST.



10  
United States Post Office (NEHBS# NU13-003)  
Superior Downtown Historic District  
Superior, Nuckolls County, Nebraska  
Photo by Rita Blauvelt, Superior  
August 1993  
South Facade looking North  
Photo 18 of 19



117  
City Hall and Auditorium (NEHBS # NU13-734)

Superior Downtown Historic District

Superior, Nuckolls County, Nebraska

Photo by Rita Blauvelt, Superior

August 1993

West and North Facade looking Southeast

Photo 19 of 19