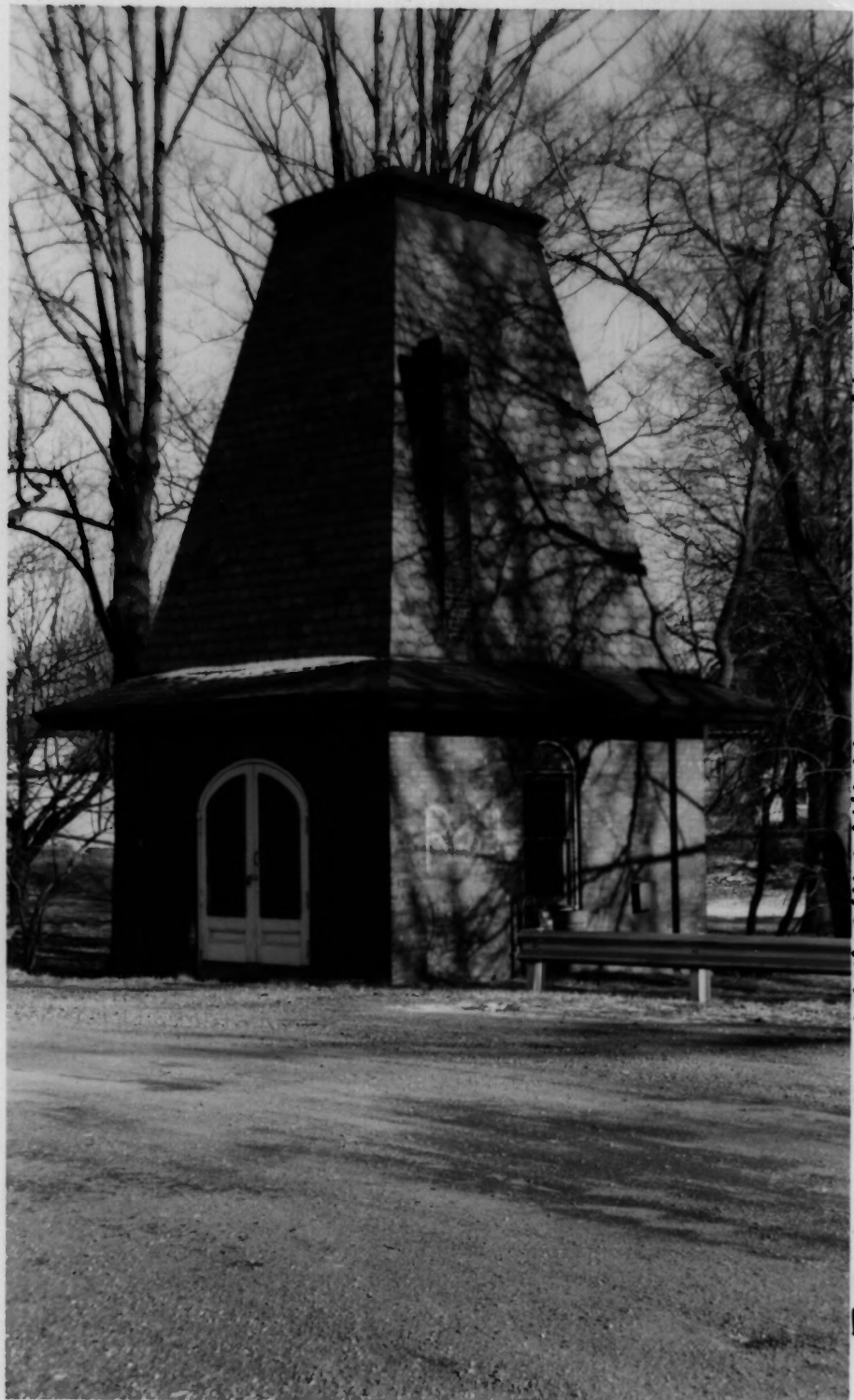


GOFFLE BROOK PARK, PASSAIC COUNTY, HAWTHORNE, NEW JERSEY

#1.





GOFFLE BROOK PARK. PASSAIC COUNTY, HAWTHORNE, N.J.



GOFFLE BROOK PARK, PASSAIC COUNTY, HAWTHORNE, N.J.

GOFFLE BROOK PARK, PASSAIC COUNTY, HAWTHORNE, N.J.

#4



GOFFLE BROOK PARK. PASSAIC COUNTY, HAWTHORNE, N.J.

#5





SOFFLE BROOK PARK, PASSAIC COUNTY, HAWTHORNE, N.J.

GOFFLE BROOK PARK, PASSAIC COUNTY, HAWTHORNE, N.J.

#7



GOFFLE BROOK PARK, PASSAIC COUNTY, HAWTHORNE, N.J.

#8



GOFFLE BROOK PARK, PASSAIC COUNTY, HAWTHORNE, N.J.

#9



GOFFLE BROOK PARK, PASSAIC COUNTY, HAWTHORNE, N.J.

#10



GOFFLE BROOK PARK, PASSAIC COUNTY, HAWTHORNE, N.J.

#11



GOFFLE BROOK PARK, PASSAIC COUNTY, HAWTHORNE, N.J.

12



GOFFLE BROOK PARK, PASSAIC COUNTY, HAWTHORNE, N.J.

13



GOFFLE BROOK PARK, PASSAIC COUNTY. HAWTHORNE, N.J.

#14



GOFFLE BROOK PARK, PASSAIC COUNTY, HAWTHORNE, N.J.

#15



GOFFLE BROOK PARK, PASSAIC COUNTY, HAWTHORNE, N.J.

#16



GOFFLE BROOK PARK, PASSAIC COUNTY, HAWTHORNE, N.J.

17



GOFFLE BROOK PARK H. D., HAWTHORNE, PASSAIC COUNTY, NJ

18



GOFFLE BROOK PARK, PASSAIC COUNTY, HAWTHORNE, N.J.

#19



GOFFLE BROOK PARK, PASSAIC COUNTY, HAWTHORNE, N.J.

#20



GOFFLE BROOK PARK. PASSAIC COUNTY. HAWTHORNE, N. J.

#21



GOFFLE BROOK PARK, PASSAIC COUNTY, HAWTHORNE, N.J.

#22



GOFFLE BROOK PARK, PASSAIC COUNTY, HAWTHORNE, N.J.

#23



GOFFLE BROOK PARK, PASSAIC COUNTY, HAWTHORNE, N.J.

#24



GOFFLE BROOK PARK, PASSAIC COUNTY, HAWTHORNE, N.J.

#25



GOFFLE BROOK PARK, PASSAIC COUNTY, HAWTHORNE, N.J.

#26



GOFFLE BROOK PARK, PASSAIC COUNTY, HAWTHORNE, U.J.

#27



SITE OF THE
JOHN GEORGE RYERSON HOUSE

BUILT ABOUT 1740

THE LIGHT INFANTRY CORPS
COMMANDED BY GEN'L LAFAYETTE
WAS ENCAMPED IN THIS VICINITY

OCT-NOV. 1780

PLACED 1952 BY
THE PASSAIC COUNTY PARK COMMISSION

GOFFLE BROOK PARK, PASSAIC COUNTY, HAWTHORNE, N.J.

#29



GOFFLE BROOK PARK, PASSAIC COUNTY, HAWTHORNE, N.J.

#30



GOFFLE BROOK PARK, PASSAIC COUNTY, HAWTHORNE - N.J.

#31



GOFFLE BROOK PARK, PASSAIC COUNTY, HAWTHORNE. N.J.

#32



BOARD OF CHOSEN FREEHOLDERS
COUNTY OF PASSAIC

1928

CHRISTAL BROWN, DIRECTOR

ROBERT R. ARMSTRONG

ISAAC MOONBURG

WILLIAM R. ROGERS

WILLIAM W. STALTER

ROBERT WORELEY

WILLIAM H. YOUNG

GARWOOD FERGUSON - COUNTY ENGINEER

F. W. SCHWIERS JR. CO. - NEW YORK

CONTRACTORS

GOFFLE BROOK PARK, PASSAIC COUNTY, HAWTHORNE, N.J.

34



GOFFLE BROOK PARK, PASSAIC COUNTY, HAWTHORNE, N.J.

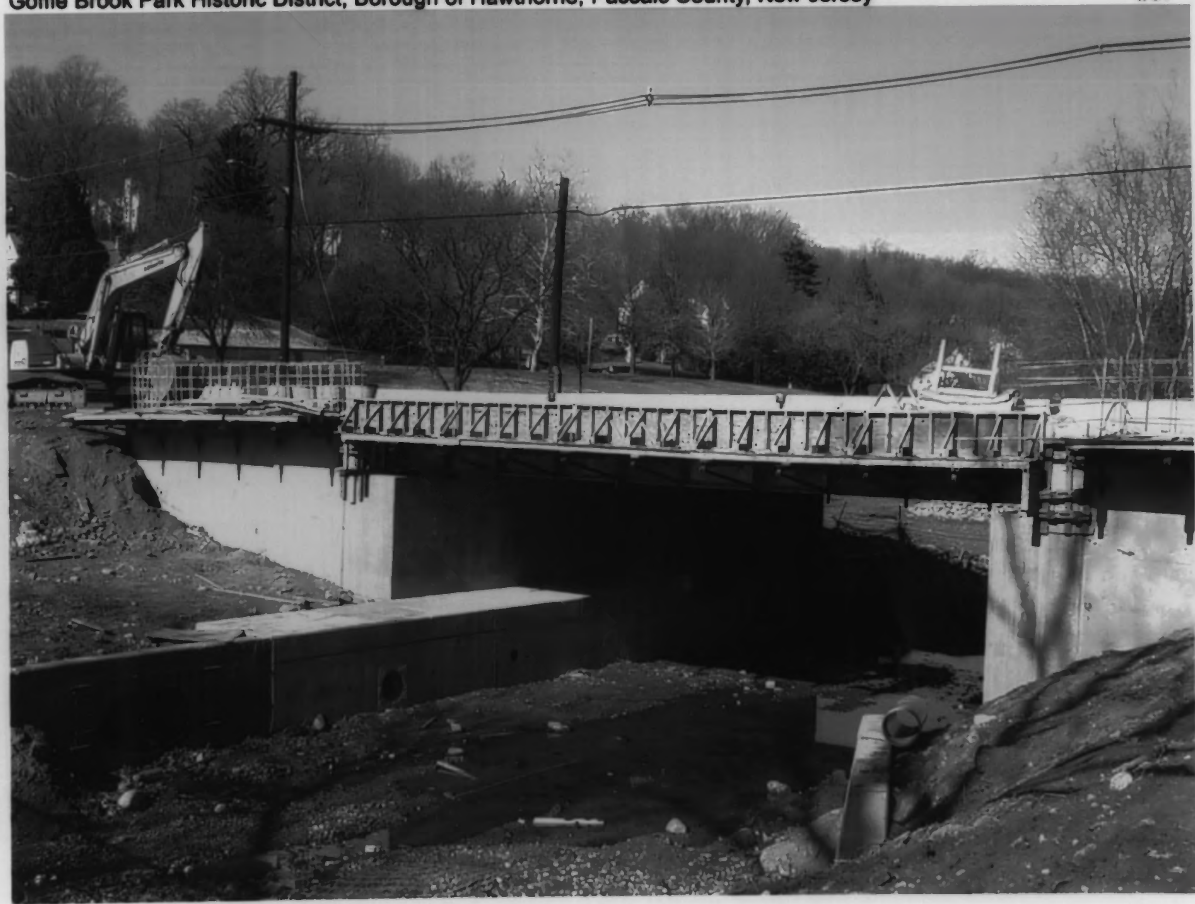
#35



GOFFLE BROOK PARK. PASSAIC COUNTY, HAWTHORNE, N. J.

#36







REHABILITATION OF
GOFFLE BROOK PARK
PASSAIC COUNTY BOROUGH OF HAWTHORNE

ASSISTING COUNCIL

MEMBERS OF HONORARY COMMITTEE

WILLIAM W. FROST, DIRECTOR
FREDERICK DE BUNIA
COURTNEY WICKHAM
DONALD W. BENTLEY
OTELLO J. BERTON
JAMES A. BURGESS, JR.
JAMES J. BURGESS
FRANCIS COLEMAN, III

KEVIN J. HANRAHAN, CHAIR
MICHAEL J. HANRAHAN, ADMINISTRATOR

PASSAIC COUNTY PARK COMMISSION

AL FURE, COMMISSIONER PRESIDENT
MARK J. URATO, VICE PRESIDENT
THOMAS J. LADD, TREASURER
RAYMOND HOGAN
JIM FIELDS

STANLEY J. HANLEY, DIRECTOR
RAYMOND J. WRIGHT, JR., ASSISTANT
STEVE COPEL, SECRETARY

DR. ROBERT J. BIRNEY, CHAIRMAN

THE IMPROVEMENT OF THIS SITE
WAS FINANCED IN PART THROUGH A
GRANT FROM THE NATIONAL PARK
SERVICE, U. S. DEPARTMENT OF THE
INTERIOR, UNDER THE PROVISIONS OF
THE URBAN PARK AND RECREATION
AND RECOVERY ACT OF 1976 (TITLE
X PUBLIC LAW 95-625)



1984

