



Photo: #1 of 15  
St. James Court 1919  
2102-2108 N. Meridian Street  
Indianapolis, IN 46202

VIEW:

Photographer: Bass Photo Co. c. 1920  
Negative filed: Bass Photo Co.



Photo: # 2 of 15

St. James Court, 1919

2102-2108 N. Meridian Street

Indianapolis, IN 46202

VIEW: E and S elevations from SE

Photographer: Slade Associates 3/20/85

Negative Filed: Slade Associates



Photo: # 3 of 15

St. James Court, 1919

2102-2108 N. Meridian Street

Indianapolis, IN 46202

VIEW: Exterior detail: S building, decorative  
panels

Photographer: Slade Associates 3/20/85

Negative Filed: Slade Associates



Photo: # 4 of 15

St. James Court, 1919

2102-2108 N. Meridian Street

Indianapolis, IN 46202

VIEW: Exterior detail: soffit panels,  
S elevation, S building

Photographer: Slade Associates 3/20/85

Negative Filed: Slade Associates





Photo: # 5 of 15

St. James Court, 1919

2102-2108 N. Meridian Street

Indianapolis, IN 46202

VIEW: Porticoes looking SW

Photographer: Slade Associates 3/20/85

Negative Filed: Slade Associates



2108

Photo: # 6 of 15

St. James Court, 1919

2102-2108 N. Meridian Street

Indianapolis, IN 46202

VIEW: typical portico and doorway, E elevation

Photographer: Slade Associates 3/20/85

Negative Filed: Slade Associates



Photo: # 7 of 15

St. James Court, 1919

2102-2108 N. Meridian Street

Indianapolis, IN 46202

VIEW: Interior: typical vestibule lunette

Photographer: Slade Associates 3/20/85

Negative Filed: Slade Associates



Photo: # 8 of 15

St. James Court, 1919

2102-2108 N. Meridian Street

Indianapolis, IN 46202

VIEW: Interior: 2nd floor corridor looking E,  
South building

Photographer: Slade Associates 6/11/86

Negative Filed: Slade Associates





Photo: # 9 of 15

St. James Court, 1919

2102-2108 N. Meridian Street

Indianapolis, IN 46202

VIEW: Interior: typical stairwell and newel

Photographer: Slade Associates 3/20/85

Negative Filed: Slade Associates



Photo: # 10 A of 15

St. James Court, 1919

2102-2108 N. Meridian Street

Indianapolis, IN 46202

VIEW: Interior: unit entry door

Photographer: Slade Associates 3/20/85

Negative Filed: Slade Associates



Photo: # ~~10-B~~ 11 of 15

St. James Court, 1919

2102-2108 N. Meridian Street

Indianapolis, IN 46202

VIEW: Interior: typical living room with  
large closet (open door)

Photographer: Slade Associates 3/20/85

Negative Filed: Slade Associates



Photo: # ~~11~~ 12 of 15

St. James Court, 1919

2102-2108 N. Meridian Street

Indianapolis, IN 46202

VIEW: Interior: kitchen/dining; china cabinets

Photographer: Slade Associates 3/20/85

Negative Filed: Slade Associates





Photo: # ~~12~~ 13 of 15

St. James Court, 1919

2102-2108 N. Meridian Street

Indianapolis, IN 46202

VIEW: Intersection: N. Meridian St. and W.  
21st St., looking NE

Photographer: Slade Associates 3/20/85

Negative Filed: Slade Associates



STEEPLETON  
BILLIARD TABLES  
SALES  
SERVICE  
REPAIRS

WORLD OF WOODS  
ROSEMARY

SEA  
LIFE

NO STOPPING  
OR PARKING  
HERE

Photo: # <sup>14 of 15</sup>  
~~13~~

St. James Court, 1919

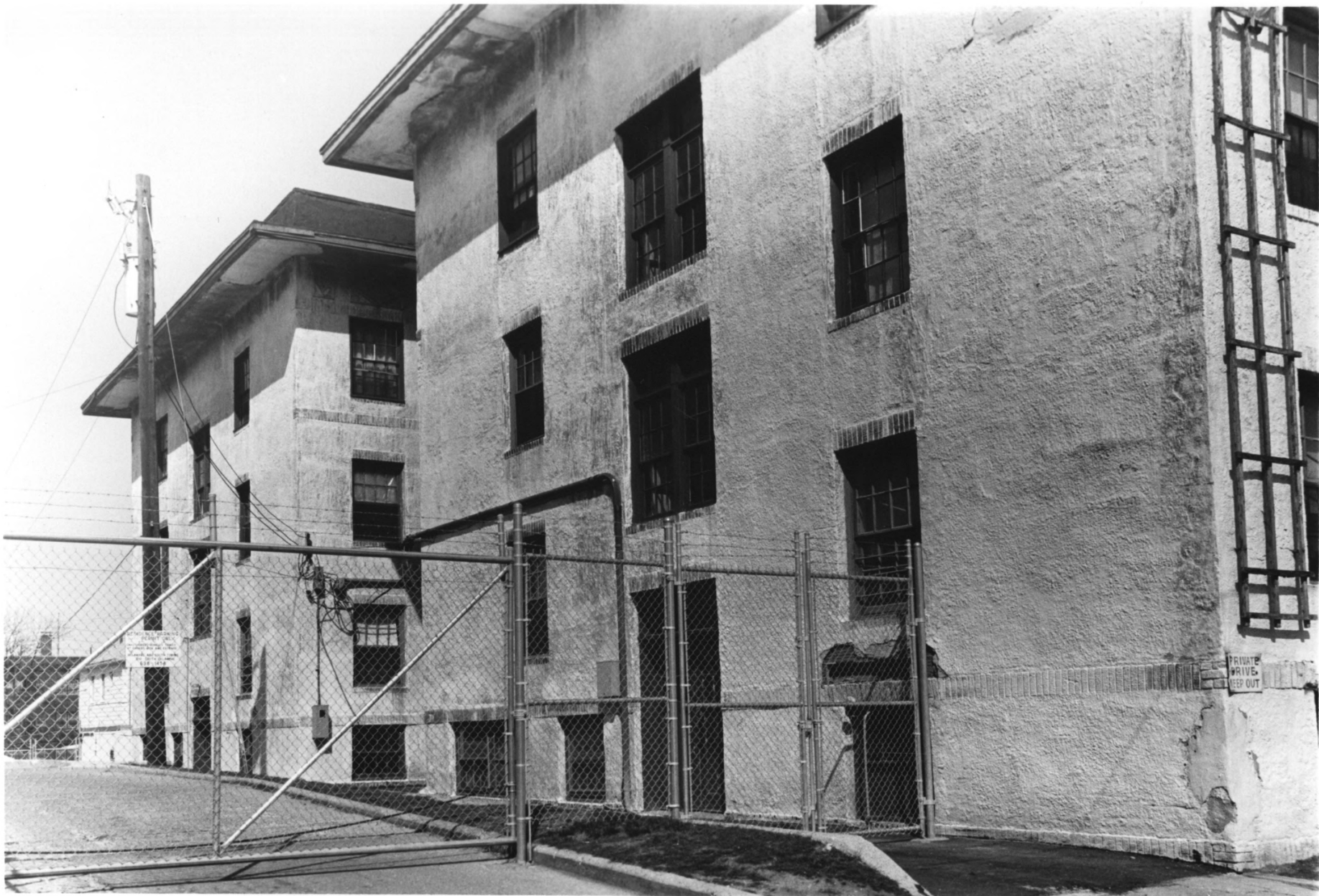
2102-2108 N. Meridian Street

Indianapolis, IN 46202

VIEW: Meridian Street looking NE

Photographer: Slade Associates 3/20/85

Negative Filed: Slade Associates



PRIVATE PROPERTY  
KEEP OUT

PRIVATE  
PROPERTY  
KEEP OUT

Photo: # <sup>15 of 15</sup>~~14~~  
St. James Court, 1919  
2102-2108 N. Meridian Street  
Indianapolis, IN 46202

VIEW: W elevations from SW, fenced parking  
lot on left

Photographer: Slade Associates 3/20/85  
Negative Filed: Slade Associates