



# Old Oxford Mill

Oxford, Kansas vicinity

Photo credit: J. Wörtman--1980

Neg. on file: KS. State Historical  
Society

View from southeast

1 of 11

JAN 26 1982



Old Oxford Mill

Oxford, Kansas vicinity

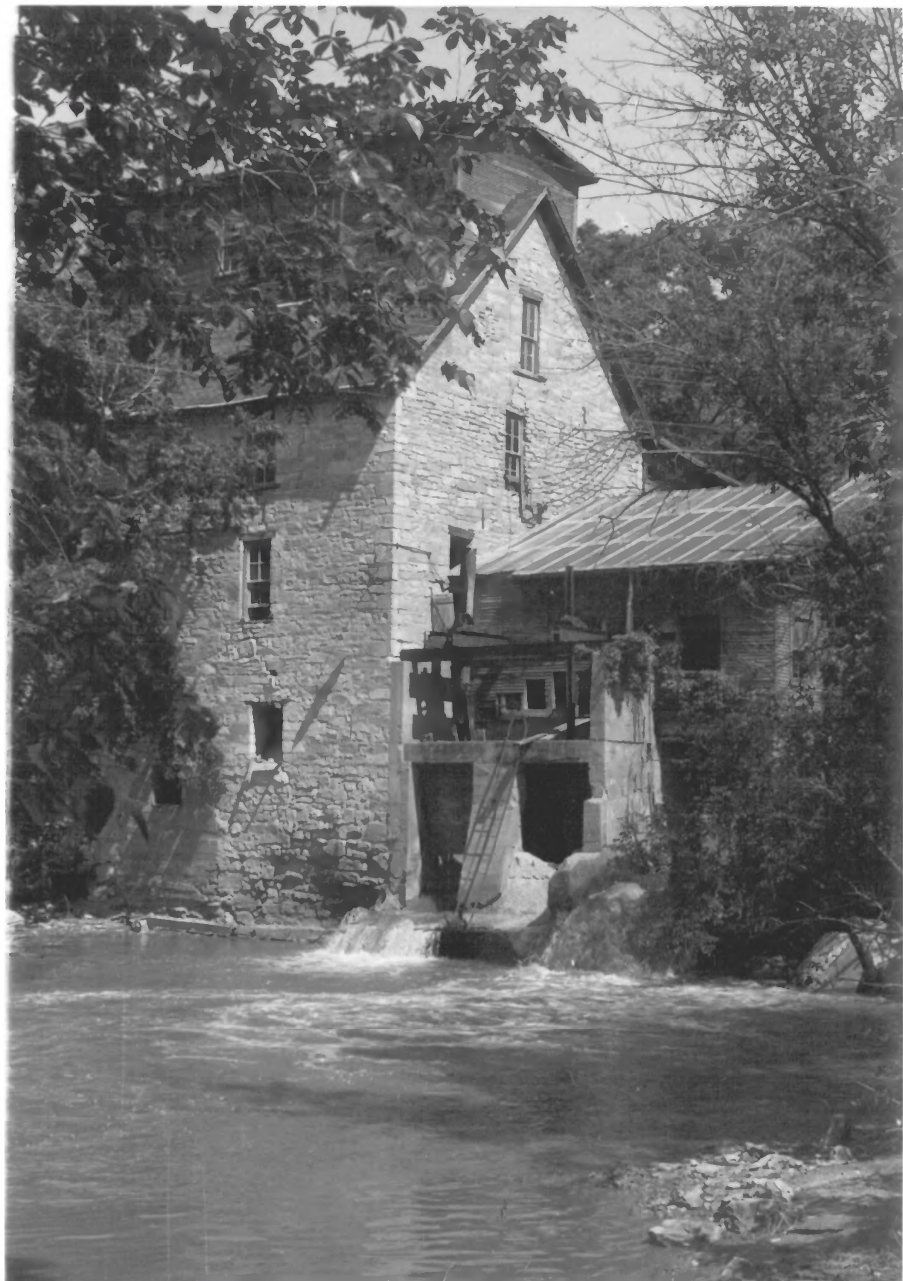
Neg. on file: KS State Historical  
Society-Manuscripts

Photo credit: unknown, c. 1876

View from southeast

2 of 11

JAN 20 1982



**Old Oxford Mill**

**Oxford, Kansas vicinity**

**Photo credit: J. Wortman--1980**

**Neg. on file: Ks. State Historical  
Society**

**View from southeast**

**3 of 11**

**JAN 20 1982**



**Old Oxford Mill**

**Oxford, Kansas vicinity**

**Photo credit: J. Wortman--1980**

**Neg. on file: Ks. State Historical  
Society**

**View from southwest**

**4 of 11**

**JAN 20 1982**





**Old Oxford Mill**

**Oxford, Kansas vicinity**

**Photo credit: J. Wortman--1980**

**Neg. on file: Ks. State Historical  
Society**

**South wall detail**

**5 of 11**

**JAN 20 1964**



**Old Oxford Mill**

**Oxford, Kansas vicinity**

**Photo credit: J. Wortman--1980**

**Neg. on file: Ks. State Historical  
Society**

**View from northeast**

**6 of 11**

**JAN 20 1982**



**Old Oxford Mill**

**Oxford, Kansas vicinity**

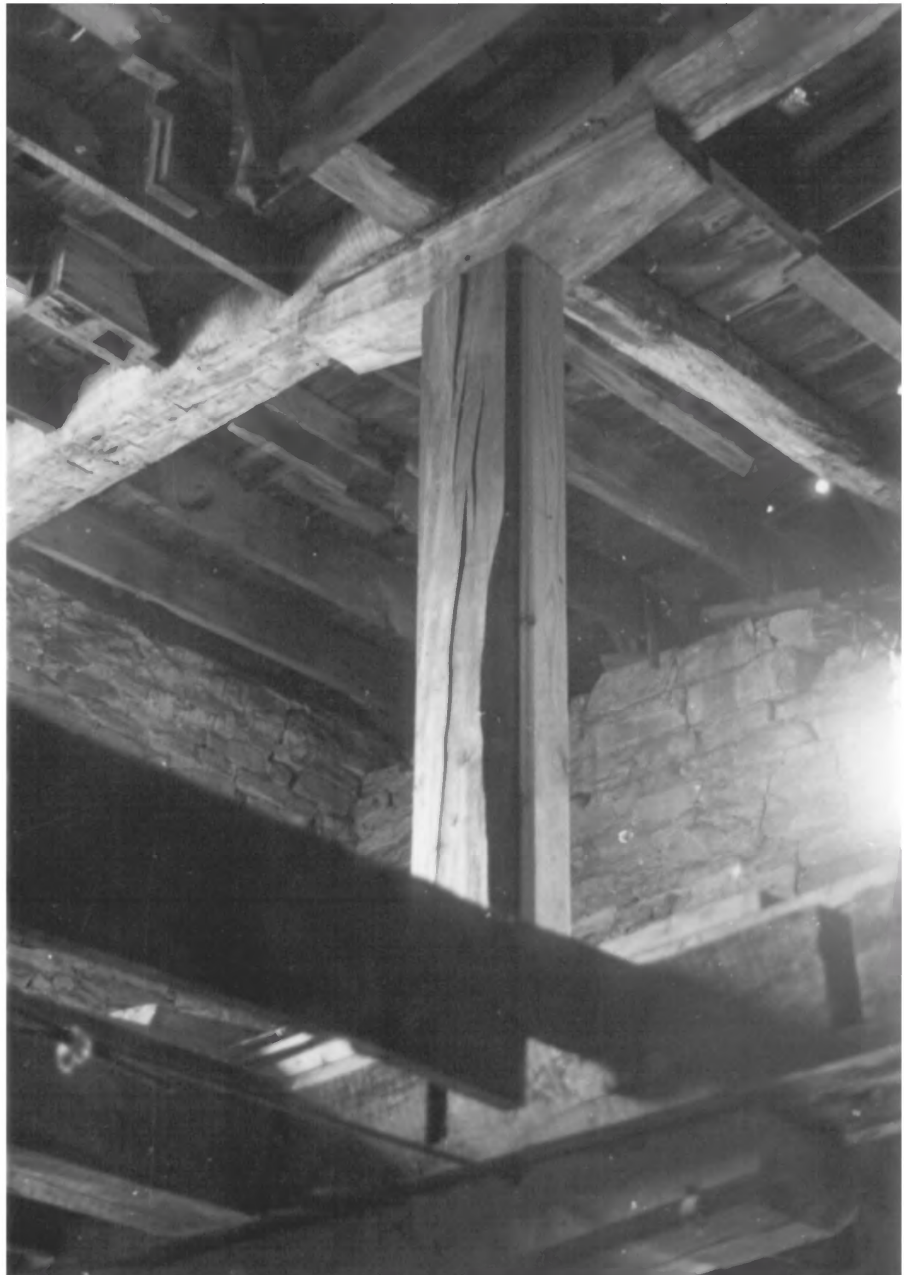
**Photo credit: J. Wortman--1980**

**Neg. on file: Ks. State Historical  
Society**

**Interior view**

**7 of 11**

JAN 20 1986



Old Oxford Mill

Oxford, Kansas vicinity

Photo credit: J. Wortman--1980

Neg. on file: Ks. State Historical  
Society

Post and beam detail

8 of 11

JAN 20 1982





Old Oxford Mill

Oxford, Kansas vicinity

Photo credit: American Miller--

January, 1940

Neg. on file: Ks. State Historical  
Society

Aerial view from Southwest

9 of 11

JAN 20 1982



**Old Oxford Mill**

**Oxford, Kansas vicinity**

**Photo credit: J. Wortman--1980**

**Neg. on file: Ks. State Historical  
Society**

**Millrace**

**10 of 11**

**JAN 20 1982**



Old Oxford Mill

Oxford, Kansas vicinity

Photo credit: J. Wortman--1980

Neg. on file: Ks. State Historical  
Society

Dam and millrace

11 of 11

JAN 20 1982