

WAR  
IS NOT  
THE  
ANSWER

DONATO JWAIKEN HOUSE

1019 E 1ST ST.

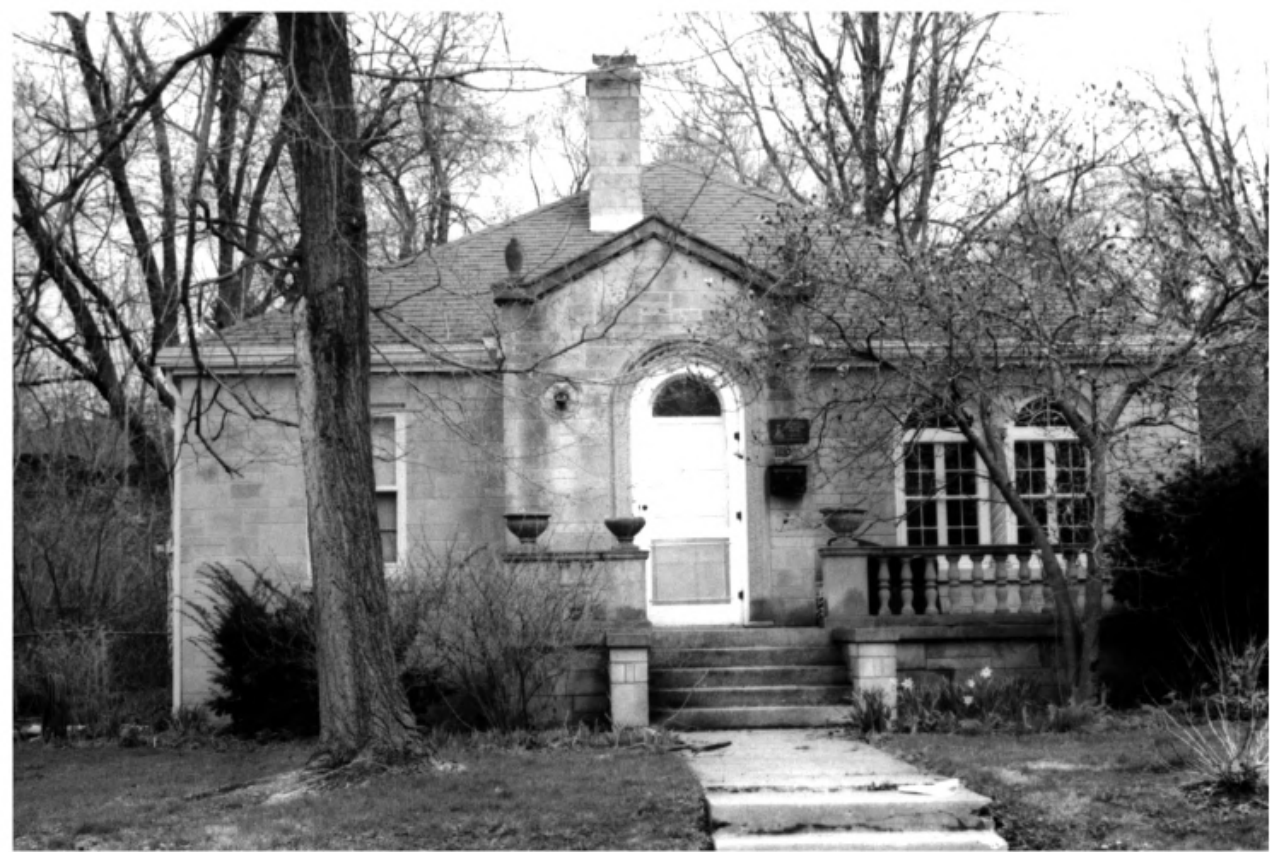
VINEGAR HILL

MONROE COUNTY, INDIANA



CHRIS DONATO HOUSE 1107 E 1ST ST.  
VINEGAR HILL  
MONROE COUNTY, INDIANA





JOSEPH ANTHONY HOUSE

1119 E 1ST. ST.

VINEGAR HILL

MONROE COUNTY, INDIANA



ANTHONY HOUSE 1119 E 1ST ST.  
VINEGAR HILL  
MONROE COUNTY, INDIANA

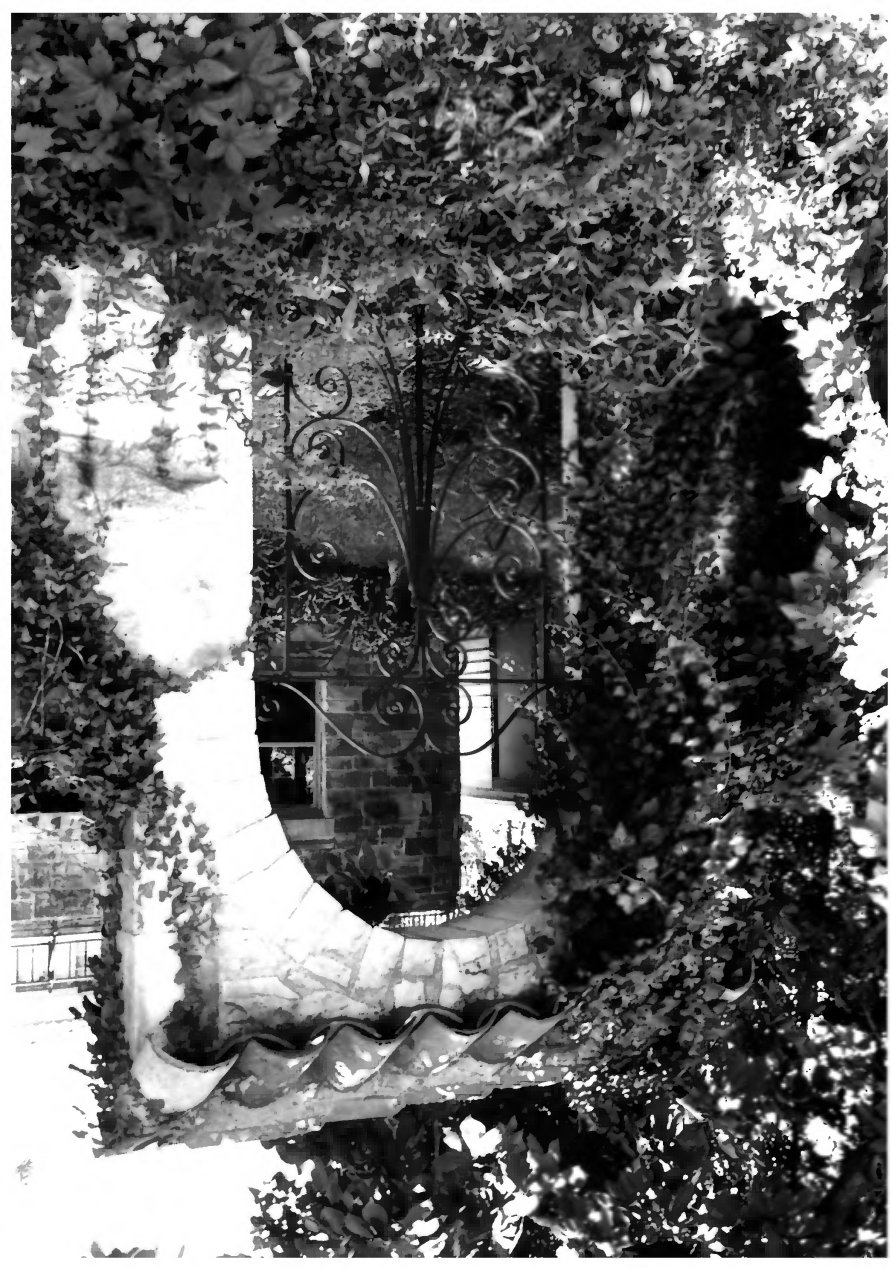


FRED BRUNER HOUSE

1123 E. 1ST. ST

VINEGAR HILL

MONROE COUNTY, INDIANA



BRUNER HOUSE 1123 E. 1ST ST.

VINEGAR HILL

MONROE COUNTY, INDIANA





HUMPHREYS BOERNER HOUSE 1213 E 1ST ST.  
VINEGAR HILL  
MONROE COUNTY, INDIANA



WYLIE HOUSE 1319 E. 16TH ST.  
VINEGAR HILL  
MONROE COUNTY, INDIANA



CUNE HOUSE 1323 E 1ST ST.  
VINEGAR HILL  
MONROE COUNTY, INDIANA



WOODWARD HOUSE 1327 E. 1ST ST.

VINEGAR HILL

MONROE, COUNTY, INDIANA





DOMENICK MAZZULLO 1002 EAST ST.  
VINEGAR HILL  
MONROE COUNTY, INDIANA

//



MAZULLO HOUSE 1002 E 1ST ST.  
VINEGAR HILL  
MONROE COUNTY, IN



FRANZMANN HOUSE 1014 E. 1ST. ST.  
VINEGAR HILL  
MONROE COUNTY, INDIANA



HARRY DONATO HOUSE  
1116 E 1ST STREET  
VINEGAR HILL  
MONROE COUNTY, INDIANA





LETSINGER-WILL HOUSE

721 S. BALLANTINE

VINEGAR HILL

MONROE COUNTY, INDIANA



MATTHEWS-TEMPLE HOUSE

725 S. HIGHLAND AVE.

VINEGAR HILL

MONROE COUNTY, INDIANA



RAY HOUSE 700 S. JORDAN  
VINEGAR HILL  
MONROE COUNTY, INDIANA



EVENS HOUSE 727 S. JORDAN AVE  
VINEGAR HILL  
MONROE COUNTY, INDIANA





HOADLEY-HOPE HOUSE 800 S. SHERIDAN DR.  
VINEGAR HILL  
MONROE COUNTY, INDIANA



MERRILL HOUSE 824 S. SHERIDAN DR  
VINEGAR HILL  
MONROE COUNTY, INDIANA



EARL AND MAPEL SULLIVAN HOUSE  
837 S. SHERIDAN DR.  
VINEGAR HILL  
MONROE COUNTY, INDIANA



1300 BL EAST 1ST ST.

VINEGAR HILL

MONROE COUNTY, IN





800 BL SHERIDAN DR.

VINEGAR HILL

MONROE COUNTY, IN



SOUTH JORDAN AVE.

VINEGAR HILL

MONROE COUNTY, IN



1001

25

HERMAN AND DOROTHY MULWET  
HOUSE

1001 E 1ST ST.

VINEGAR HILL HISTORIC DISTRICT  
BLOOMINGTON, MONROE  
COUNTY, IN



26

HELEN DUNCAN HOUSE

113 E 10<sup>TH</sup> ST.

VINEGAR HILL HISTORIC DISTRICT

BLOOMINGTON MONROE

COUNTY, IN





27

FRANK AND SARAH ELLIOTT HOUSE

1202 E 1ST STREET

VINEGAR HILL HISTORIC DISTRICT

BLOOMINGTON, MONROE COUNTY

IN



28

ALFRED AND CLARA KINSEY HOUSE  
1320 E 1ST ST.

VINEGAR HILL HISTORIC DISTRICT  
BLOOMINGTON, MONROE COUNTY  
IN

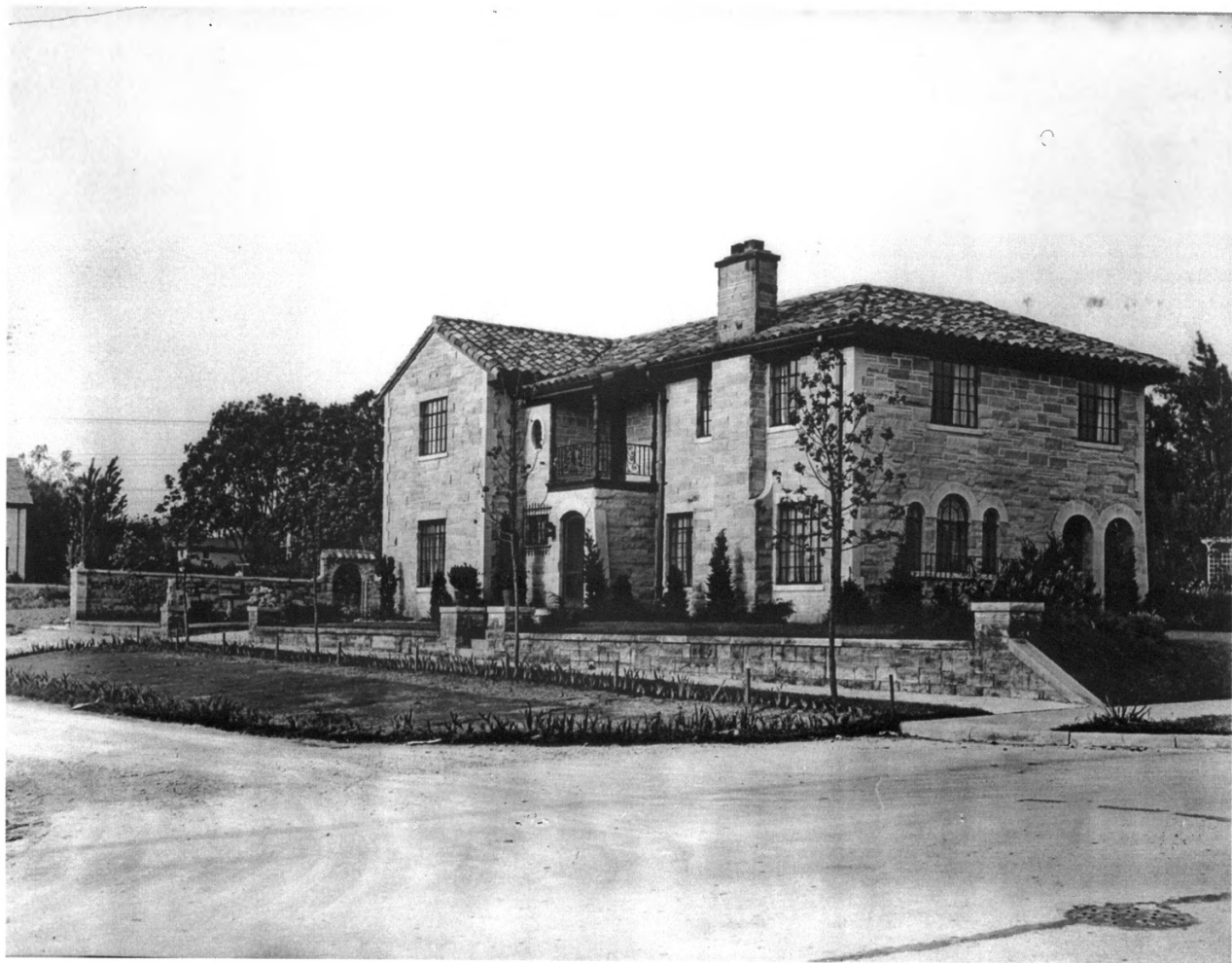


29

WILLIAM AND CLYDE ALEXANDER HOUSE  
714 S. BALLANTINE RD

VINEGAR HILL HISTORIC DISTRICT  
BLOOMINGTON, MONROE COUNTY  
IN



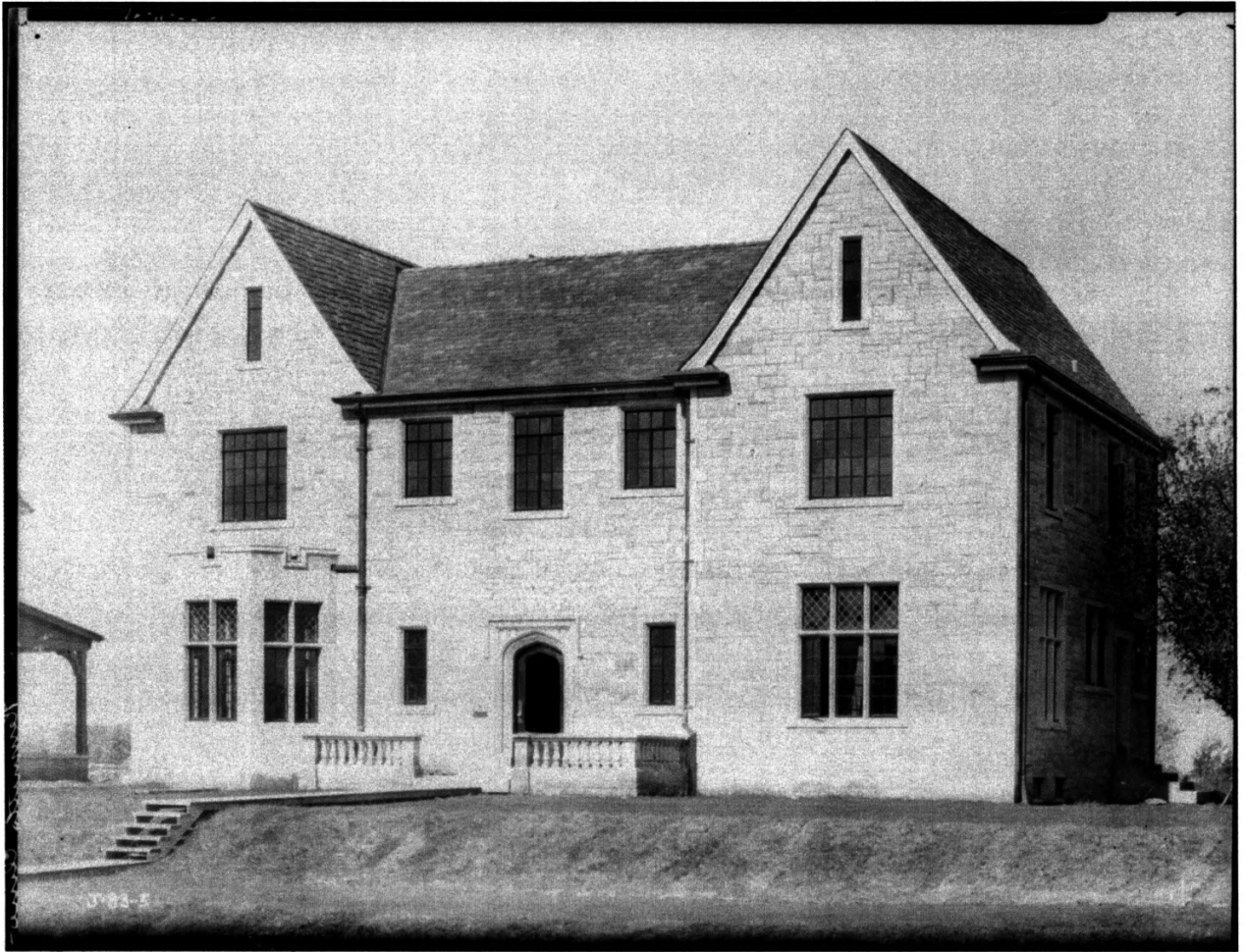


Bruner-Townsend House • 1123 E. 1<sup>st</sup> St. (11)  
c1928



David G. and Florence Wylie House • 1319 E. 1<sup>st</sup> St. (15)  
c1928





Kenneth and Dorothy Cline House • 1323 E. 1<sup>st</sup> St. (16)  
c1928



Harry and Gertrude Feltus House • 1120 E. 1<sup>st</sup> St. (29)  
c1935





1130 E 1<sup>st</sup> St. (32)  
c1928



James and Jeanette Havens House • 1214 E. 1<sup>st</sup> St. (37)  
c1934



Letsinger-Will House • 721 S. Ballantine (46)

c1938

Source: *Monograph of the Works of Burns and James Architects*, Indianapolis, IN.  
*Architecture and Design*, Vol. II No. 5, June 1938. New York: Architectural Catalog.





Matthews-Temple House • 725 S. Highland Ave. (47)  
c1928



Jesse and Jessie Ray House • 700 S. Jordan Ave. (48)  
c1935





Alfred and Kathleen Evens House • 727 S. Jordan Ave. (52  
c1930  
camera facing northeast





Alfred and Kathleen Evens House • 727 S. Jordan Ave. (52)  
c1930  
camera facing southeast

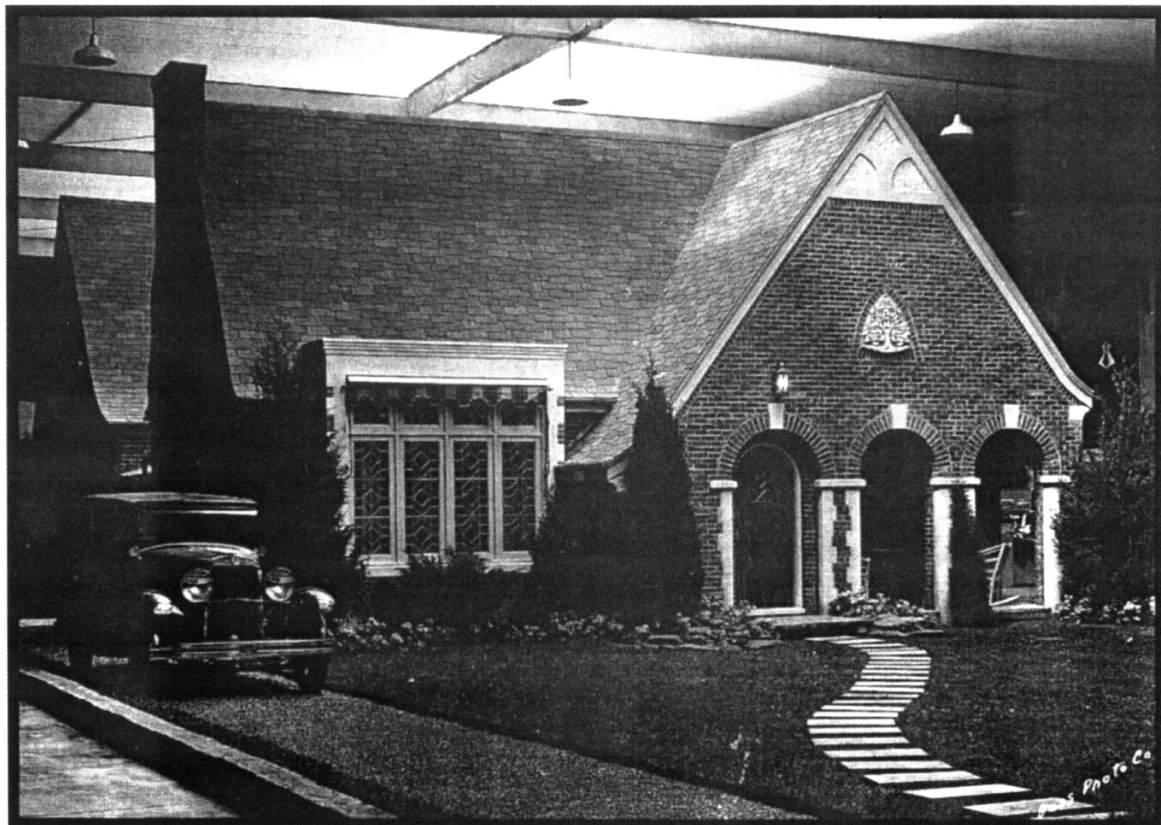


North side of 1300 block of E. 1<sup>st</sup> St., looking west from Jordan Ave.  
c1928.

Left to right: Matthews-Temple House, 725 S. Highland Ave. (#47); David G. and Florence Wylie House, 1319 E. 1<sup>st</sup> St. (#15); Kenneth and Dorothy Cline House, 1323 E. 1<sup>st</sup> St. (#16); and 1327 E. 1<sup>st</sup> St, Glen and Ella Woodward House (#17).

Source: Williams, Susan. "Limestone as 'something beautiful': 'Angels, cathedrals, amphitheaters' . . . and neighborhoods."

<http://www.homepages.indiana.edu/100303/text/limestone.shtml>



Centerpiece home, 1929 Indianapolis Home Builders Association Home Show

Source: *Indianapolis Monthly*, January 1992.

cf. W. Earl and Mabel Sullivan House • 837 S. Sheridan Dr. (61)





Interior of living room in 1929 Indianapolis Home Builders Association Home Show centerpiece home.

Source: *Indianapolis Monthly*, January 1992.

cf. W. Earl and Mable Sullivan House • 837 S. Sheridan Dr. (61)

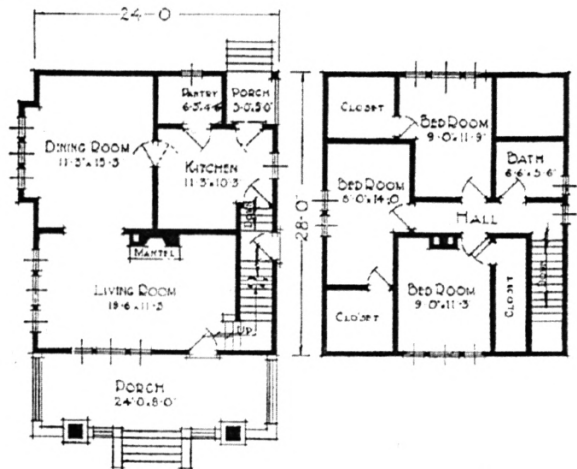
The Sullivan House has a very similar limestone fireplace surround. Open shelves substitute for the radio nook.



## The VALLEJO

THE massive structure, and low, wide eaves of the Vallejo are distinctive among much costlier homes. Many windows, a fireplace, and semi-open stairs give it a particularly delightful living-room.

*Mr. Charles Dozsee of Ohio, owner of the "Vallejo," says: "I made a saving of at least \$500 by building a Lewis Home. The materials and everything connected with my dealings with you were very satisfactory."*



Lewis-Liberty Vallejo

1924

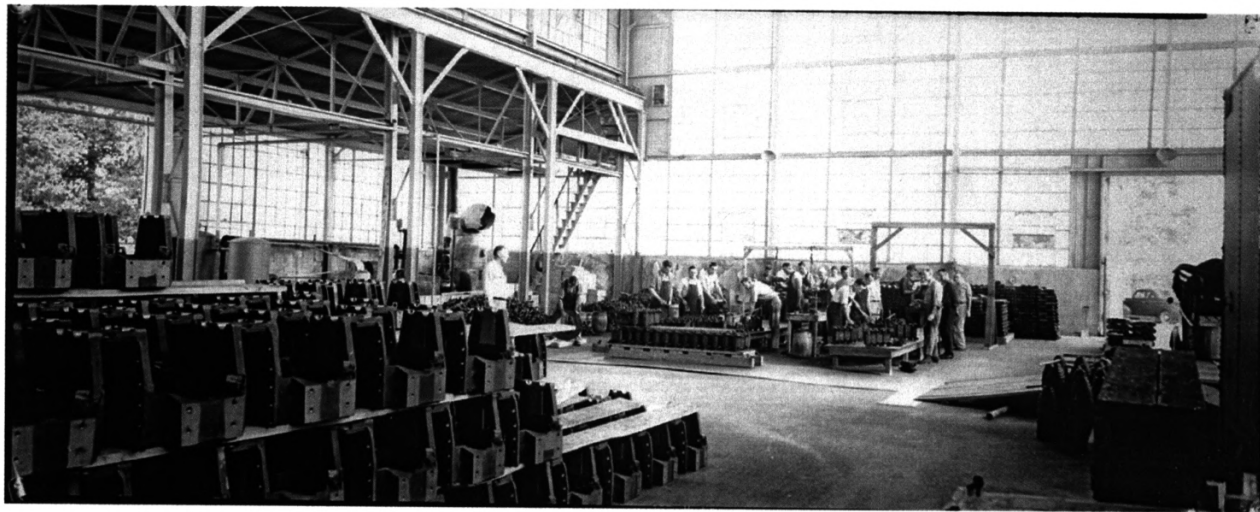
cf. William J. and Grace Franzmann House • 1014 E. 1<sup>st</sup> St. (21)

Scan of catalogue page contributed by Rosemary Thornton



Glen Woodward as WWI soldier  
(owner of 1327 E. 1<sup>st</sup> St [17])  
c1917

Historic Photo 17 of 18

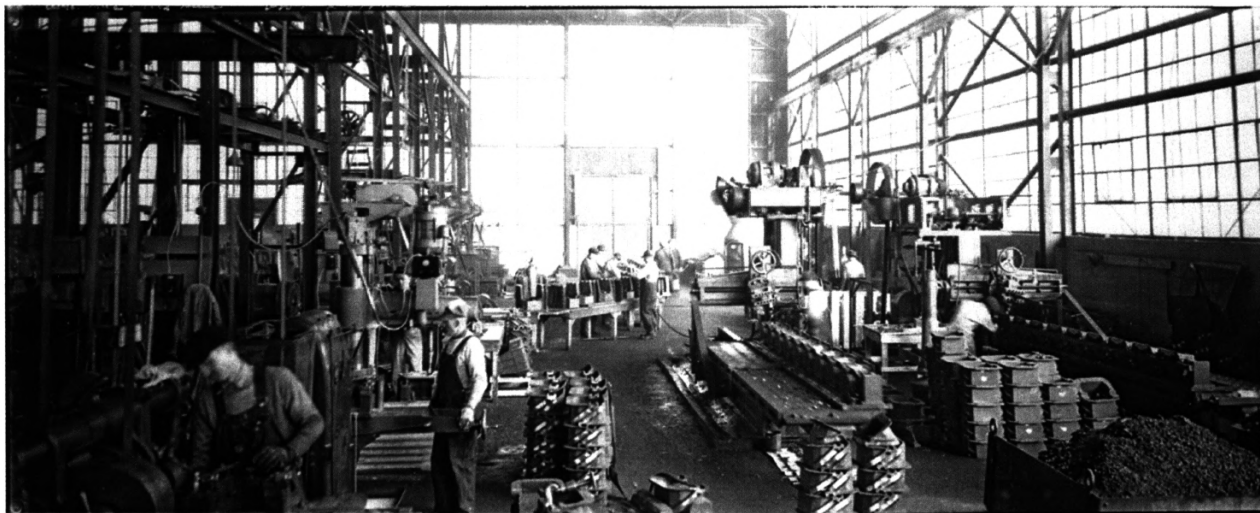


Wylie Mill

Bloomington Limestone Company

David G. Wylie, president-treasurer (owner of 1319 E. 1<sup>st</sup> St. [15])





Cline Mill

Bloomington Limestone Company

Kenneth Cline, vice president (owner of 1323 E. 1<sup>st</sup> St. [16])