



(1) Ranger's Residence, NPS Bldg #22,
(C), front looking NE.

Rattlesnake Springs Historic District
Carlsbad vicinity, New Mexico

Betsy Swanson
825 Calle Mejia #1223
Santa Fe, N.M. 87501

December 1985



(1) Ranger's Residence, NPS Bldg #22,
(C), rear looking SE.

Rattlesnake Springs Historic District
Carlsbad vicinity, New Mexico

Betsy Swanson
825 Calle Mejia #1223
Santa Fe, N.M. 87501

December 1985



(1) Ranger's Residence, NPS Bldg #22,
(C), SE corner of portal showing
chamfered box columns with Doric
caps, wooden entablature, brick-
denticulated cornice, and wooden
canale.

Rattlesnake Springs Historic District
Carlsbad vicinity, New Mexico

Betsy Swanson
825 Calle Mejia #1223
Santa Fe, N.M. 87501

December 1985



(1) Ranger's Residence, NPS Bldg #22,
(C), front looking NW.

Rattlesnake Springs Historic District
Carlsbad vicinity, New Mexico

Betsy Swanson
825 Calle Mejia #1223
Santa Fe, N.M. 87501

December 1985



(1) Ranger's Residence, NPS Bldg #22,
(C), portal looking W.

Rattlesnake Springs Historic District
Carlsbad vicinity, New Mexico

Betsy Swanson
825 Calle Mejia #1223
Santa Fe, N.M. 87501

December 1985



(1) Ranger's Residence, NPS Bldg #22,
(C), portal ceiling showing tongue-
and-grove planks supported by
small cross-beams, and pedimented
lintel of window in facade.

Rattlesnake Springs Historic District
Carlsbad vicinity, New Mexico

Betsy Swanson
825 Calle Mejia #1223
Santa Fe, N.M. 87501

December 1985



(1) Ranger's Residence, NPS Bldg #22,
(C), looking E along front facade
showing window of garage, denti-
culated brick cornice, and portal.

Rattlesnake Springs Historic District
Carlsbad vicinity, New Mexico

Betsy Swanson
825 Calle Mejia #1223
Santa Fe, N.M. 87501
December 1985



(2) Pump House, NPS Bldg #20, (C),
front looking SW.

Rattlesnake Springs Historic District
Carlsbad vicinity, New Mexico

Betsy Swanson
825 Calle Mejia #1223
Santa Fe, N.M. 87501

December 1985



- (2) Pump House, NPS Bldg #20, (C)
rear looking NE showing 1986
addition to house chlorine tank.
- (3) Pond (C) at right.
- (12) Shed (NC) at left.

Rattlesnake Springs Historic District
Carlsbad vicinity, New Mexico

Betsy Swanson
825 Calle Mejia #1223
Santa Fe, N.M. 87501

June 1986

20

DANGER
CHLORINE GAS

AUTHORIZED
PERSONNEL
ONLY

(2) Pump House, NPS Bldg #20, (C),
entrance, north facade, showing
doors, lintel and vigas.

Rattlesnake Springs Historic District
Carlsbad vicinity, New Mexico

Betsy Swanson

825 Calle Mejia #1223

Santa Fe, N.M. 87501

December 1985



(2) Pump House, NPS Bldg #20, (C),
ceiling of recessed entrance or
narthex, showing vigas, planks
laid in herringbone pattern,
adzed lintel.

Rattlesnake Springs Historic District
Carlsbad vicinity, New Mexico

Betsy Swanson
825 Calle Mejia #1223
Santa Fe, N.M. 87501

December 1985



(3) Rattlesnake Springs Pond, spring
house (C), looking SW.

Rattlesnake Springs Historic District
Carlsbad vicinity, New Mexico

Betsy Swanson
825 Calle Mejia #1223
Santa Fe, N.M. 87501

December 1985



(3) Rattlesnake Springs Pond in winter,
looking NE, showing spring house,
pump house, ranger's residence,
all (C).

Rattlesnake Springs Historic District
Carlsbad vicinity, New Mexico

Betsy Swanson
825 Calle Mejia #1223
Santa Fe, N.M. 87501

December 1985

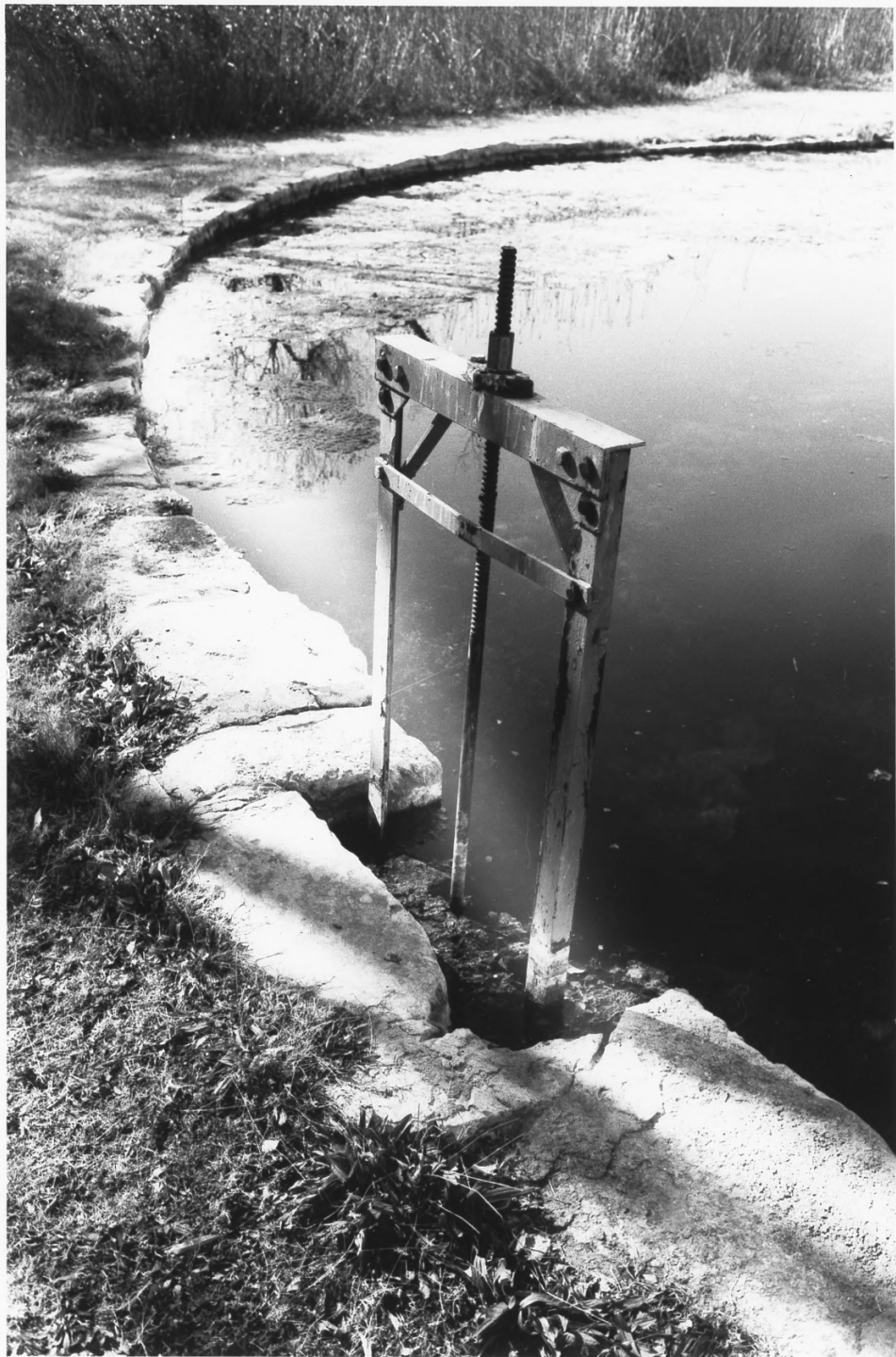


(3) Rattlesnake Springs Pond in summer looking NE, showing spring house, pump house, ranger's residence, all (C).

Rattlesnake Springs Historic District
Carlsbad vicinity, New Mexico

Betsy Swanson
825 Calle Mejia #1223
Santa Fe, N.M. 87501

June 1986



(3) Rattlesnake Springs Pond, limestone block wall of east side of pond, showing iron headgate,
(C). Looking S.

Rattlesnake Springs Historic District
Carlsbad vicinity, New Mexico

Betsy Swanson
825 Calle Mejia #1223
Santa Fe, N.M. 87501

December 1985



(3) Rattlesnake Springs irrigation
ditches, looking NE toward (1)
ranger residence from pond. (C)
Headgate in foreground; orchard
(4) in background at right. (C).

Rattlesnake Springs Historic District
Carlsbad vicinity, New Mexico

Betsy Swanson
825 Calle Mejia #1223
Santa Fe, N.M. 87501

December 1985



Service road, looking E from fruit orchard toward CCC camp area, showing irrigation ditch (3) and horse pasture (6) at right, Western soapberry thicket at left. All (C).

Rattlesnake Springs Historic District
Carlsbad vicinity, New Mexico

Betsy Swanson
825 Calle Mejia #1223
Santa Fe, N.M. 87501

June 1986



(4) Orchard, looking SW.

Rattlesnake Springs Historic District
Carlsbad vicinity, New Mexico

Betsy Swanson
825 Calle Mejia #1223
Santa Fe, N.M. 87501

June 1986



(5) Weeping willows on North Irrigation
Ditch, behind orchard, looking NW.
(C)

Rattlesnake Springs Historic District
Carlsbad vicinity, New Mexico

Betsy Swanson
825 Calle Mejia #1223
Santa Fe, N.M. 87501

October 1986



(6) Pasture at east end of property, looking E toward Guadalupe Mountains and cottonwood trees of Civilian Conservation Corps camp (7), showing road, position of old CCC road (at center) and position of buried swimming pool (in distance at left). (C)

Rattlesnake Springs Historic District
Carlsbad vicinity, New Mexico

Betsy Swanson
825 Calle Mejia #1223
Santa Fe, N.M. 87501

October 1986



(6) Pasture west of CCC camp area,
looking W. (C) North irrigation
ditch (3) at right (C).

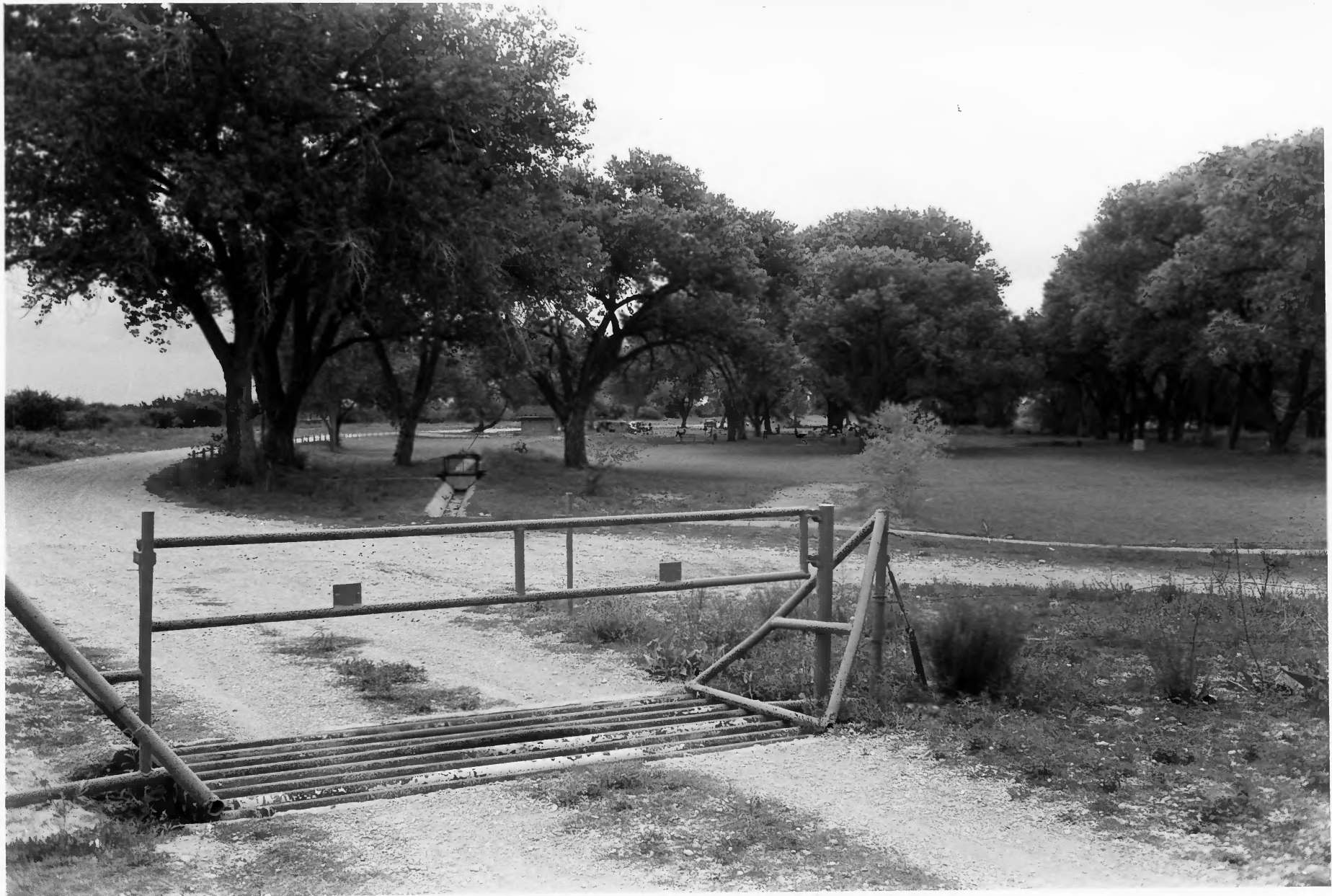
Rattlesnake Springs Historic District
Carlsbad vicinity, New Mexico

Betsy Swanson

825 Calle Mejia #1223

Santa Fe, N.M. 87501

June 1986

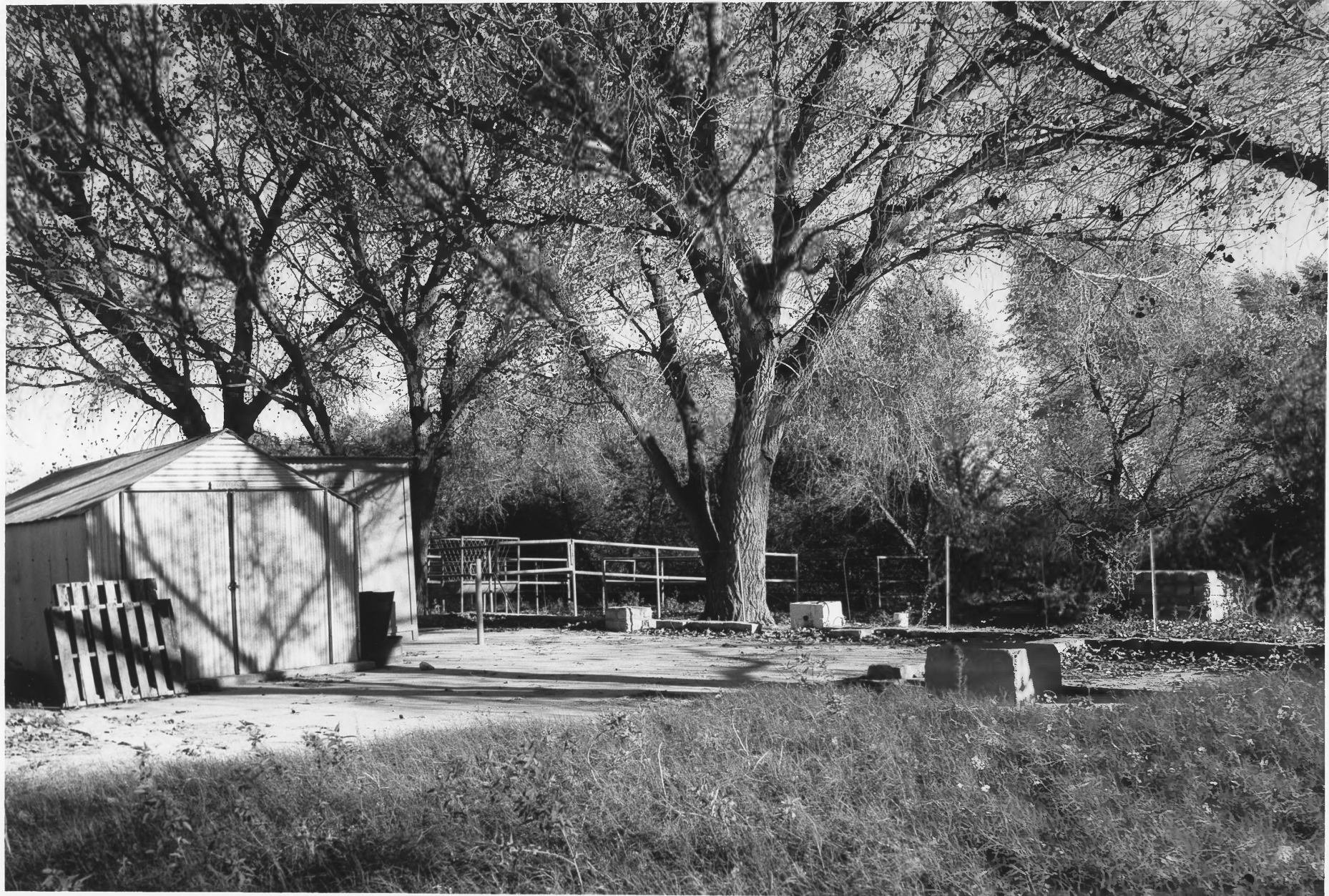


(7) Civilian Conservation Corps camp
site with rows of cottonwood trees
looking E. (C)

Rattlesnake Springs Historic District
Carlsbad vicinity, New Mexico

Betsy Swanson
825 Calle Mejia #1223
Santa Fe, N.M. 87501

June 1986



Horse corral area on stone foundations of CCC Utility Building (7) (C), showing Horse Feed Storage Shed at left (10) (NC), Tack Shed behind it (11) (NC), metal corral (NC), Stone loading ramp at right (7) (C). Looking SE toward Rattlesnake Springs Seep.

Rattlesnake Springs Historic District
Carlsbad vicinity, New Mexico

Betsy Swanson
825 Calle Mejia #1223
Santa Fe, N.M. 87501

October 1986



(8) Henry Harrison homestead house
site, in pasture area (6), looking
S from yard of ranger residence(C)

Rattlesnake Springs Historic District
Carlsbad vicinity, New Mexico

Betsy Swanson
825 Calle Mejia #1223
Santa Fe, N.M. 87501
June 1986



(8) Henry Harrison homestead house
site, Ranger Kim Watson examin-
ing artifacts, looking W. (C)

Rattlesnake Springs Historic District
Carlsbad vicinity, New Mexico

Betsy Swanson
825 Calle Mejia #1223
Santa Fe, N.M. 87501
June 1986



12. Storage shed, looking NE. (NC)

Rattlesnake Springs Historic District
Carlsbad vicinity, New Mexico

Betsy Swanson

825 Calle Mejia #1223

Santa Fe, N.M. 87501

December 1985



View of Rattlesnake Springs Historic
District, looking west toward
Guadalupe Mountains.

Carlsbad vicinity, New Mexico.

Betsy Swanson

825 Calle Mejia #1223

Santa Fe, N.M. 87501

October 1986