



UNITED STATES DEPARTMENT OF THE INTERIOR  
NATIONAL PARK SERVICE

NATIONAL REGISTER OF HISTORIC PLACES

PROPERTY PHOTOGRAPH FORM

(Type all entries - attach to or enclose with photograph)

STATE Kansas	
COUNTY Sedgwick	
FOR NPS USE ONLY	
ENTRY NUMBER	DATE
	MAR 7 1973

1. NAME

COMMON: Arthur W. Kincade House  
AND OR HISTORIC: Henry J. Allen House

2. LOCATION

STREET AND NUMBER:  
255 North Roosevelt  
CITY OR TOWN:  
Wichita

STATE: Kansas	CODE 67208	COUNTY: Sedgwick	CODE 173
------------------	---------------	---------------------	-------------

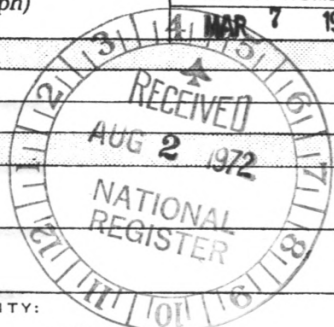
3. PHOTO REFERENCE

PHOTO CREDIT: Kansas State Historical Society Staff  
DATE OF PHOTO: August 2, 1971  
NEGATIVE FILED AT: Sedgwick county file, Historic Sites Survey  
Kansas State Historical Society

4. IDENTIFICATION

DESCRIBE VIEW, DIRECTION, ETC.

View of the Henry J. Allen House looking  
southeast across the courtyard.



PROPERTY OF THE NATIONAL REGISTER

SEE INSTRUCTIONS



UNITED STATES DEPARTMENT OF THE INTERIOR  
NATIONAL PARK SERVICE

NATIONAL REGISTER OF HISTORIC PLACES  
PROPERTY PHOTOGRAPH FORM

(Type all entries - attach to or enclose with photograph)

STATE Kansas	
COUNTY Sedgwick	
FOR NPS USE ONLY	
ENTRY NUMBER MAR 7 1973	DATE

SEE INSTRUCTIONS

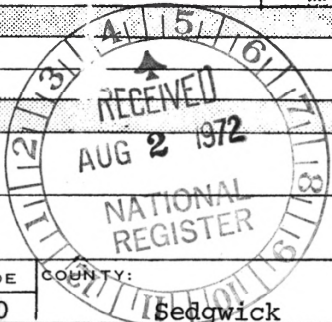
1. NAME

COMMON: Arthur W. Kincade House  
AND/OR HISTORIC: Henry J. Allen House

2. LOCATION

STREET AND NUMBER:  
255 North Roosevelt  
CITY OR TOWN:  
Wichita  
STATE: Kansas 67208

CODE	COUNTY:	CODE
20	Sedgwick	173



3. PHOTO REFERENCE

PHOTO CREDIT: Kansas State Historical Society Staff  
DATE OF PHOTO: August 2, 1971  
NEGATIVE FILED AT: Sedgwick county file, Historic Sites Survey  
Kansas State Historical Society

4. IDENTIFICATION

DESCRIBE VIEW, DIRECTION, ETC.

Close-up view of the Henry J. Allen House from the east.





UNITED STATES DEPARTMENT OF THE INTERIOR  
NATIONAL PARK SERVICE

NATIONAL REGISTER OF HISTORIC PLACES  
PROPERTY PHOTOGRAPH FORM

(Type all entries - attach to or enclose with photograph)

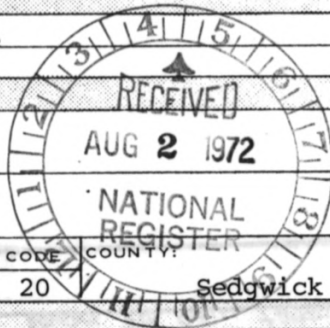
STATE Kansas	
COUNTY Sedgwick	
FOR NPS USE ONLY	
ENTRY NUMBER	DATE
MAR 7 1973	

1. NAME

COMMON: Arthur W. Kincade House  
AND/OR HISTORIC: Henry J. Allen House

2. LOCATION

STREET AND NUMBER:  
255 North Roosevelt  
CITY OR TOWN:  
Wichita  
STATE:  
Kansas 67208



CODE	COUNTY:	CODE
20	Sedgwick	173

3. PHOTO REFERENCE

PHOTO CREDIT: Kansas State Historical Society Staff  
DATE OF PHOTO: August 2, 1971  
NEGATIVE FILED AT: Sedgwick county file, Historic Sites Survey  
Kansas State Historical Society

4. IDENTIFICATION

DESCRIBE VIEW, DIRECTION, ETC.  
Southeast view of the Henry J. Allen House showing the south and east facades.

SEE INSTRUCTIONS



UNITED STATES DEPARTMENT OF AGRICULTURE

UNITED STATES DEPARTMENT OF THE INTERIOR  
NATIONAL PARK SERVICE

NATIONAL REGISTER OF HISTORIC PLACES  
PROPERTY PHOTOGRAPH FORM

(Type all entries - attach to or enclose with photograph)

STATE Kansas	
COUNTY Sedgwick	
FOR NPS USE ONLY	
ENTRY NUMBER	DATE
	MAR 7 1973

SEE INSTRUCTIONS

1. NAME

COMMON: Arthur W. Kincade House  
AND/OR HISTORIC: Henry J. Allen House

2. LOCATION

STREET AND NUMBER:  
255 North Roosevelt

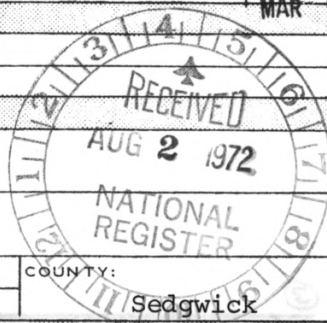
CITY OR TOWN:  
Wichita

STATE: Kansas 67208

CODE  
20

COUNTY:  
Sedgwick

CODE  
173



3. PHOTO REFERENCE

PHOTO CREDIT: Kansas State Historical Society Staff

DATE OF PHOTO: June 7, 1972

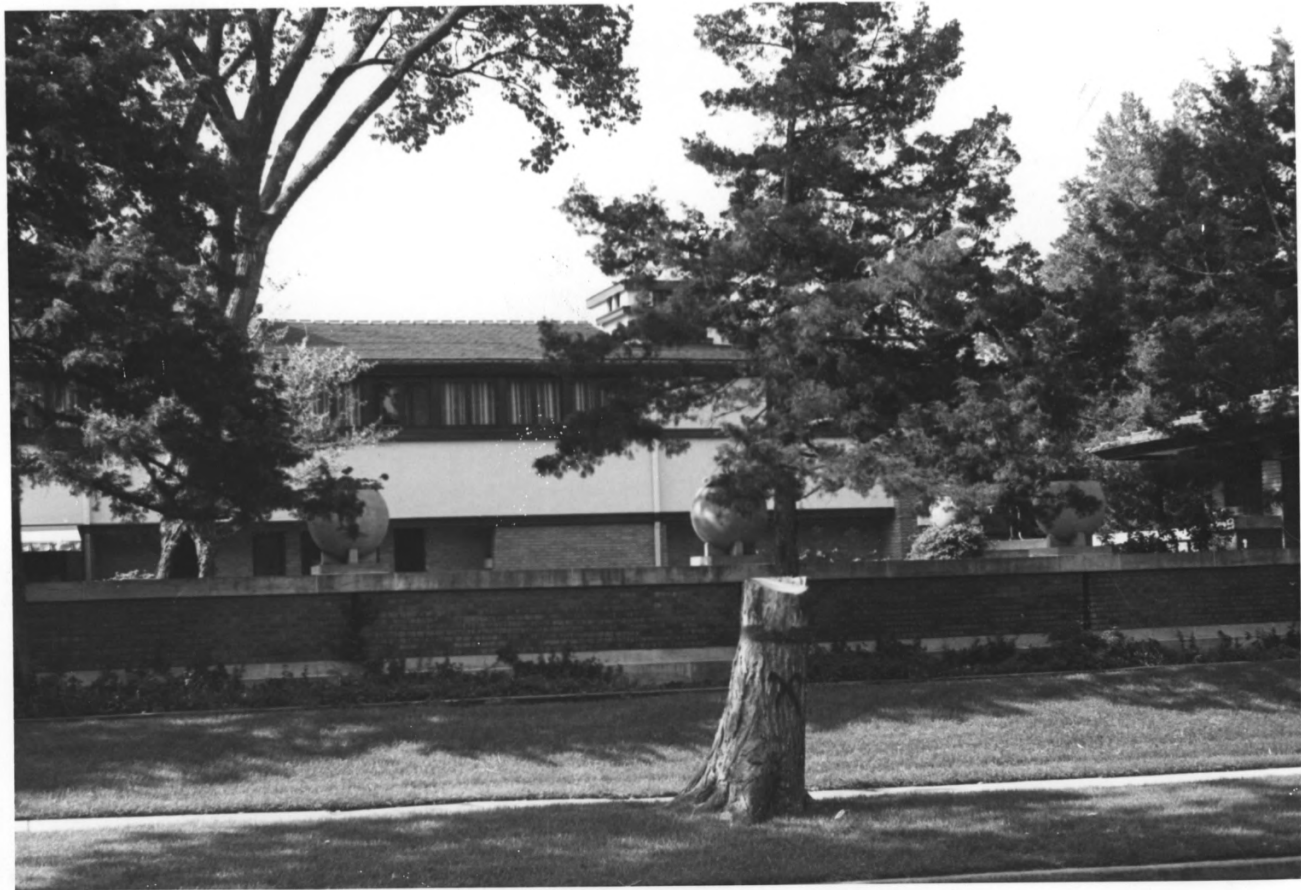
NEGATIVE FILED AT: Sedgwick county file, Historic Sites Survey  
Kansas State Historical Society

4. IDENTIFICATION

DESCRIBE VIEW, DIRECTION, ETC.

View of the garden teahouse of the Henry J. Allen House from the north-northeast.





UNITED STATES DEPARTMENT OF THE INTERIOR  
NATIONAL PARK SERVICE

NATIONAL REGISTER OF HISTORIC PLACES

PROPERTY PHOTOGRAPH FORM

(Type all entries - attach to or enclose with photograph)

STATE Kansas	
COUNTY Sedgwick	
FOR NPS USE ONLY	
ENTRY NUMBER MAR 7 1973	DATE

SEE INSTRUCTIONS

1. NAME

COMMON: Arthur W. Kincade House

AND/OR HISTORIC: Henry J. Allen House

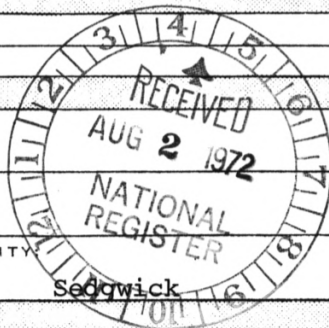
2. LOCATION

STREET AND NUMBER:  
255 North Roosevelt

CITY OR TOWN:  
Wichita

STATE:  
Kansas 67208

CODE	COUNTY	CODE
20	Sedgwick	173



3. PHOTO REFERENCE

PHOTO CREDIT: Kansas State Historical Society Staff

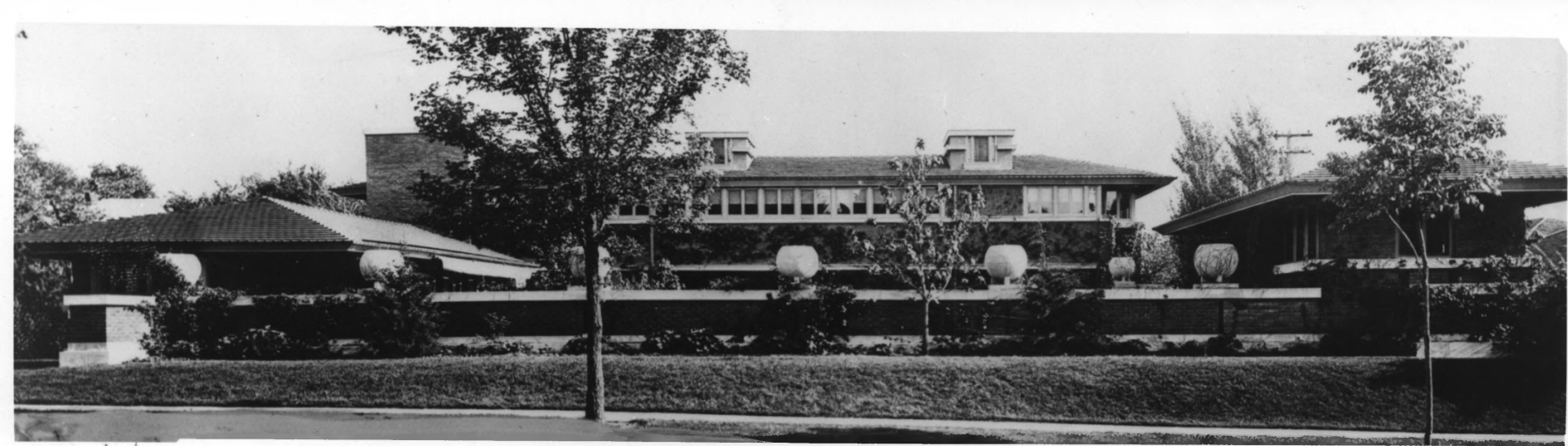
DATE OF PHOTO: June 7, 1972

NEGATIVE FILED AT: Sedgwick county file, Historic Sites Survey  
Kansas State Historical Society

4. IDENTIFICATION

DESCRIBE VIEW, DIRECTION, ETC.

North view of the Henry J. Allen House  
showing the north facade facing the courtyard.



(15)

Country, England

A

Jacket 533-183 Illus. No. 102a  
 Width 52 1/2 Depth 15 Focus S/S  
 Sq. Ht.  Line  Comb.  Sil'te  Br

Henry J. Allen, Jr.  
 Currier, DeLong & Co.  
 Kansas