







2.

Wayne County Courthouse

DEC 8 1978

Richmond, Indiana

SEP 12 1978

Pat Steele, 1978

Historic Landmarks Foundation, Cambridge  
City

North elevation, looking south



3. Wayne County Courthouse  
Richmond, Indiana DEC 8 1978  
Pat Steele, 1978  
Historic Landmarks Foundation,  
Cambridge City  
West elevation, looking east  
SEP 12 1978





4. Wayne County Courthouse

Richmond, Indiana

SEP 12 1978

Pat Steele, 1978

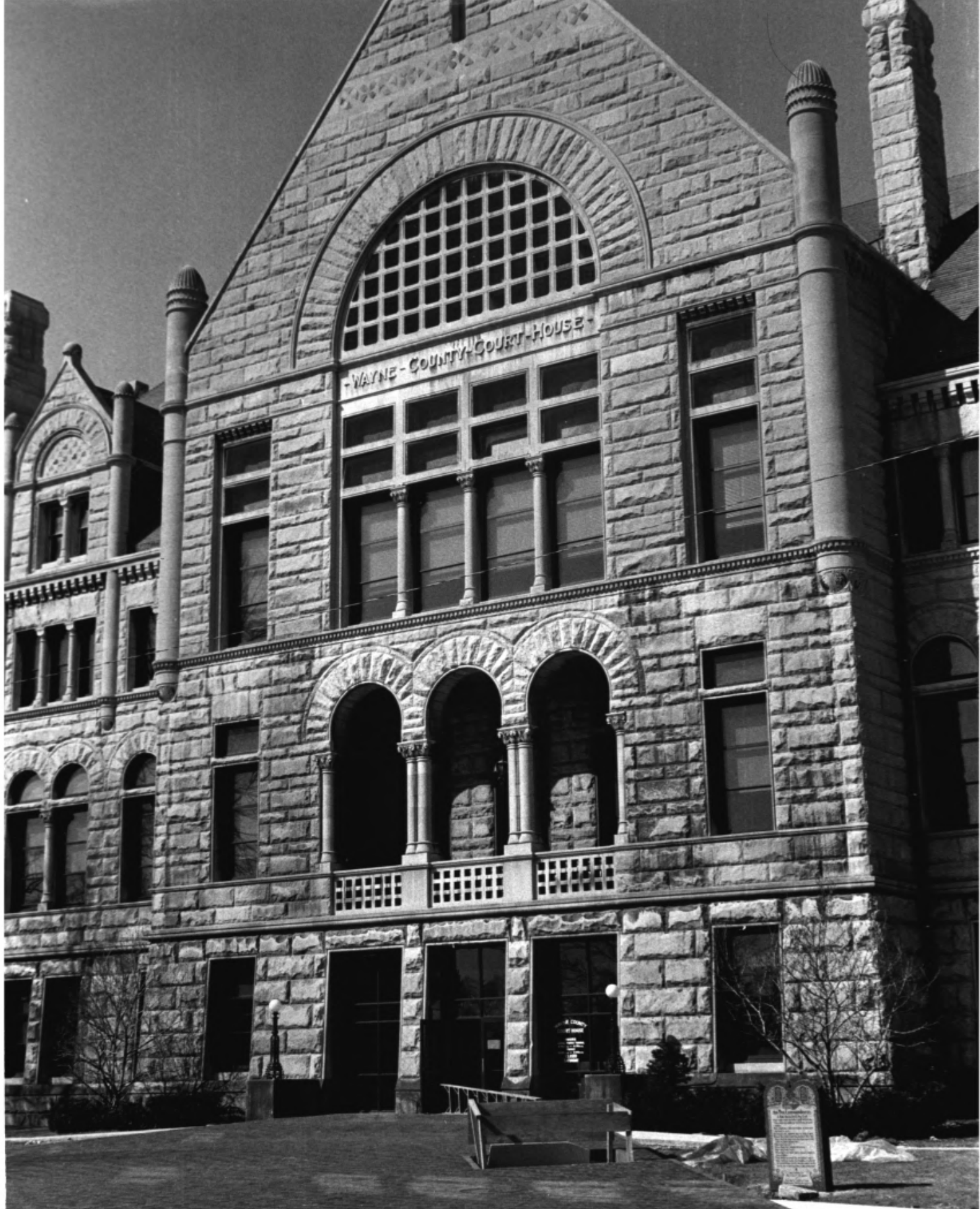
Historic Landmarks Foundation,

Cambridge City

South elevation, looking north

DEC 8 1978





WAYNE COUNTY COURT HOUSE

5. Wayne County Courthouse  
Richmond, Indiana  
Pat Steele, 1978  
Historic Landmarks Foundation  
Cambridge City  
Main entrance in the east elevation  
SEP 12 1978  
DEC 8 1978



6. Wayne County Courthouse

Richmond, Indiana

Pat Steele, 1978

Historic Landmarks Foundation,

Cambridge City

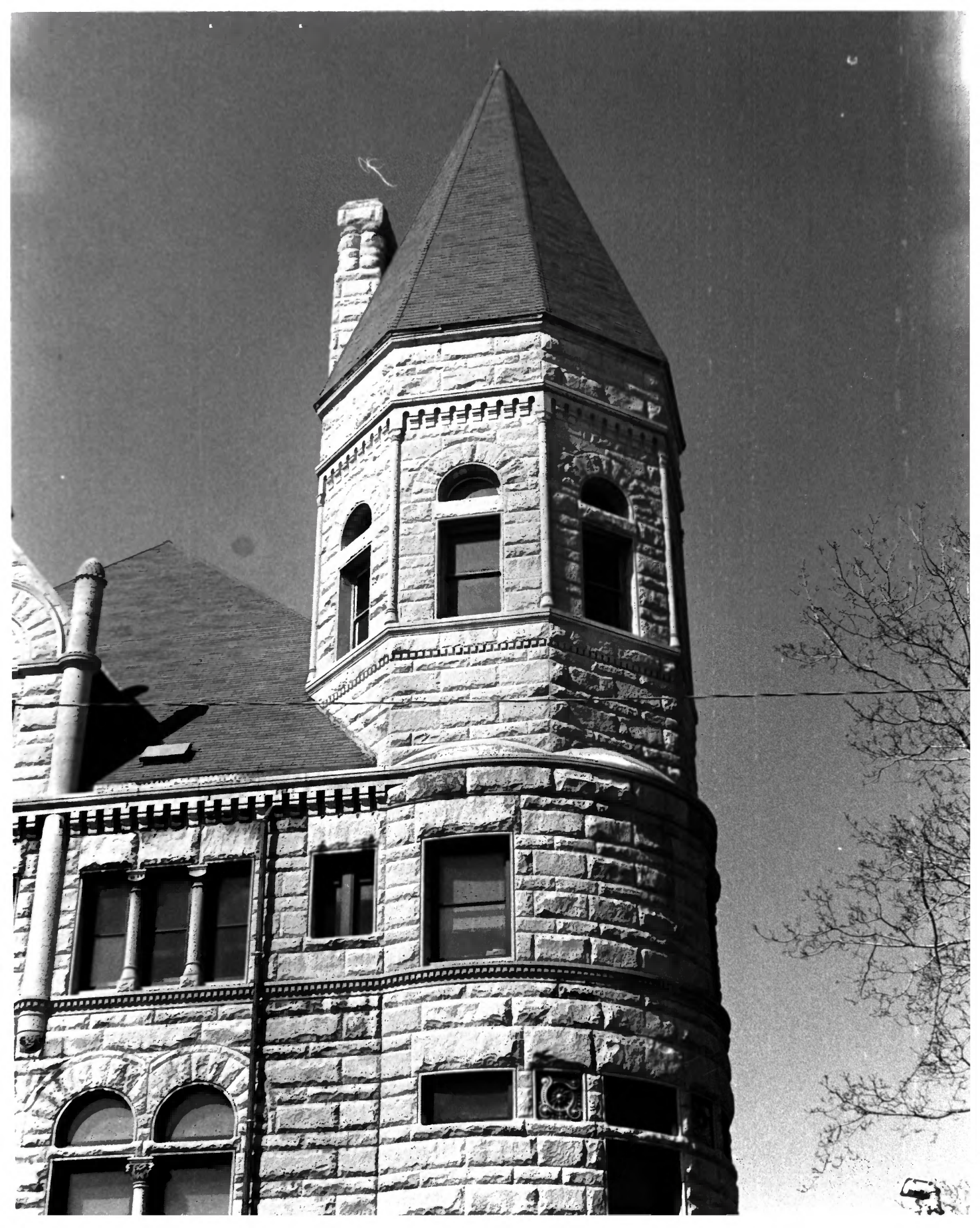
Arcade above main entrance in the

east elevation

DEC 8 1978

SEP 12 1978





7. Wayne County Courthouse  
Richmond, Indiana DEC 8 1978  
Pat Steele, 1973  
Historic Landmarks Foundation,  
Cambridge City  
Tower at the northeast corner

SEP 12 1978





8. Wayne County Courthouse  
Richmond, Indiana  
Pat Steele, 1978 SEP 12 1978  
Historic Landmarks Foundation,  
Cambridge City  
Entrance in the south elevation

DEC 8 1978





9. Wayne County Courthouse

Richmond, Indiana

**DEC 8**

**1978**

Pat Steele, 1978

Historic Landmarks Foundation,

Cambridge City

Detail of lamp at the main east

elevation entrance SEP 12 1978



1890

10.

Wayne County Courthouse

DEC 8

1978

Richmond, Indiana

Pat Steele

SEP 12 1978

1978

Historic Landmarks Foundation,

Cambridge City

Detail of entrance in north elevation