

Columbia River Bridge at Kettle Falls
WS DOT Bridge No. 395-545

Kettle Falls, Washington

Photographer: Washington St. Dept. of Trans.
22 March 1978

Washington State Department of Transportation,
Bridge Condition Unit, Olympia, Wash.
Looking North (Note: RR bridge in immediate
background)

Ferry + Stevens Cos. WA



Columbia River Bridge at Kettle Falls

WSDOT Bridge No. 13,95-545

Kettle Falls, Washington

Photographer: Wash. State Dept. of Transportation

25 June 1986

Washington State Dept. of Transportation,
Bridge Condition Unit, Olympia, WA

Looking West

Ferry + Stevens Cos.



Columbia River Bridge at Kettle Falls

WSDOT Bridge No. 395-545

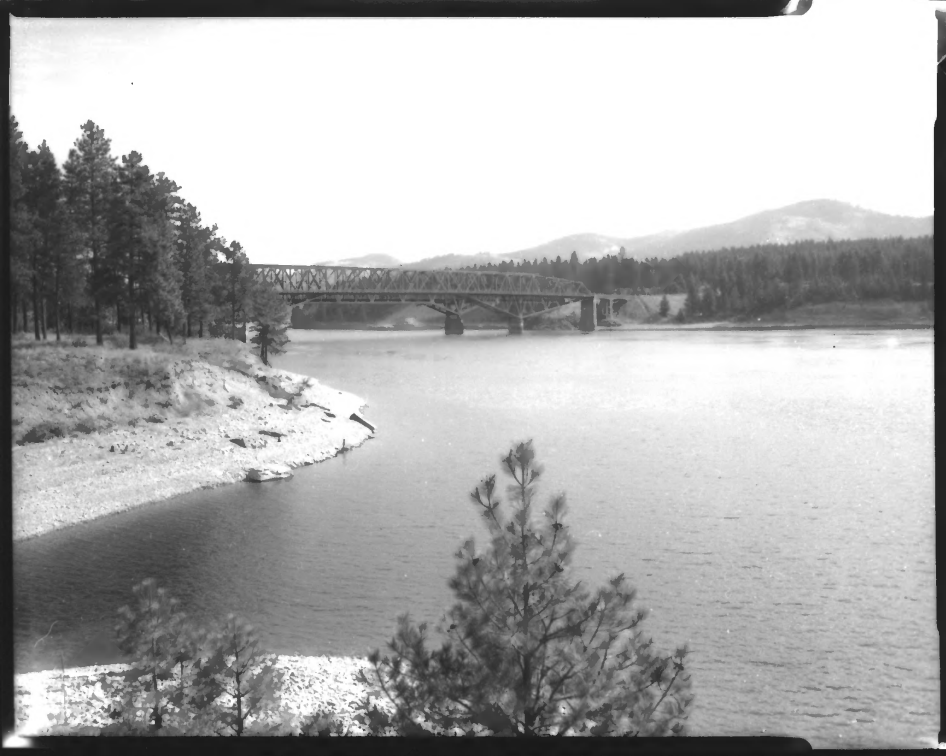
Kettle Falls, Washington

Photographer: [unclear] Wash. St. Dept. of Trans

11 September 1957

Washington State Department of Transportation,
Bridge Condition Unit, Olympia, WA
Locking East

Ferry + Stevens Cos. WA



Columbia River Bridge at Kettle
Falls - August 1994. View from
Southwest Rail (train) bridge
in background

Photographer: Lawrence M. Jacobson

Ferry + Stevens Cos. WA