



Silk Stocking District
Talladega, Alabama
Talladega County

Ellen Mertins, March 1978
Alabama Historical Commission

Baker House (#1)
South Court Street

APR 3 1978

DEC 13 1979

Photo Number: 1



Silk Stocking District
Talladega, Alabama
Talladega County

Ellen Mertins, March 1978
Alabama Historical Commission

South Court Street
looking south from intersection at
Coffee Street

showing #1-5

APR 3 1978

DEC 13 1979

Photo Number: 2



Silk Stocking District
Talladega, Alabama
Talladega County

Ellen Mertins, March 1978
Alabama Historical Commission

South Court Street
looking south from intersection at
South Street West

Davis House (#5), Castleberry House
(#6) and County Warehouse (#7).

APR 3 1978

DEC 13 1979

Photo Number: 3



Silk Stocking District
Talladega, Alabama
Talladega County

Ellen Mertins, March 1978
Alabama Historical Commission

Castleberry House (#6)
South Court Street

APR 3 1978

DEC 13 1979

Photo Number: 4



Silk Stocking District
Talladega, Alabama
Talladega County

Ellen Mertins, March 1978
Alabama Historical Commission

South Court Street
looking north

Willis House (#10) in left fore-
ground, County Building (#19)
center right.

APR 3 1978

DEC 13 1979

Photo Number: 5



Silk Stocking District
Talladega, Alabama
Talladega County

Ellen Mertins, March 1978
Alabama Historical Commission

Bradford Avenue
looking east from intersection
with South Court Street

APR 3 1978

DEC 13 1979

Photo Number: 6



Silk Stocking District
Talladega, Alabama
Talladega County

Ellen Mertins, March 1978
Alabama Historical Commission

^{-ROBERTS}
McMillan-Coker House (#38)
McMillan Street
view from northeast.

APR 3 1978

DEC 13 1979

Photo Number: 7



Silk Stocking District
Talladega, Alabama
Talladega County

Ellen Mertins, March 1978
Alabama Historical Commission

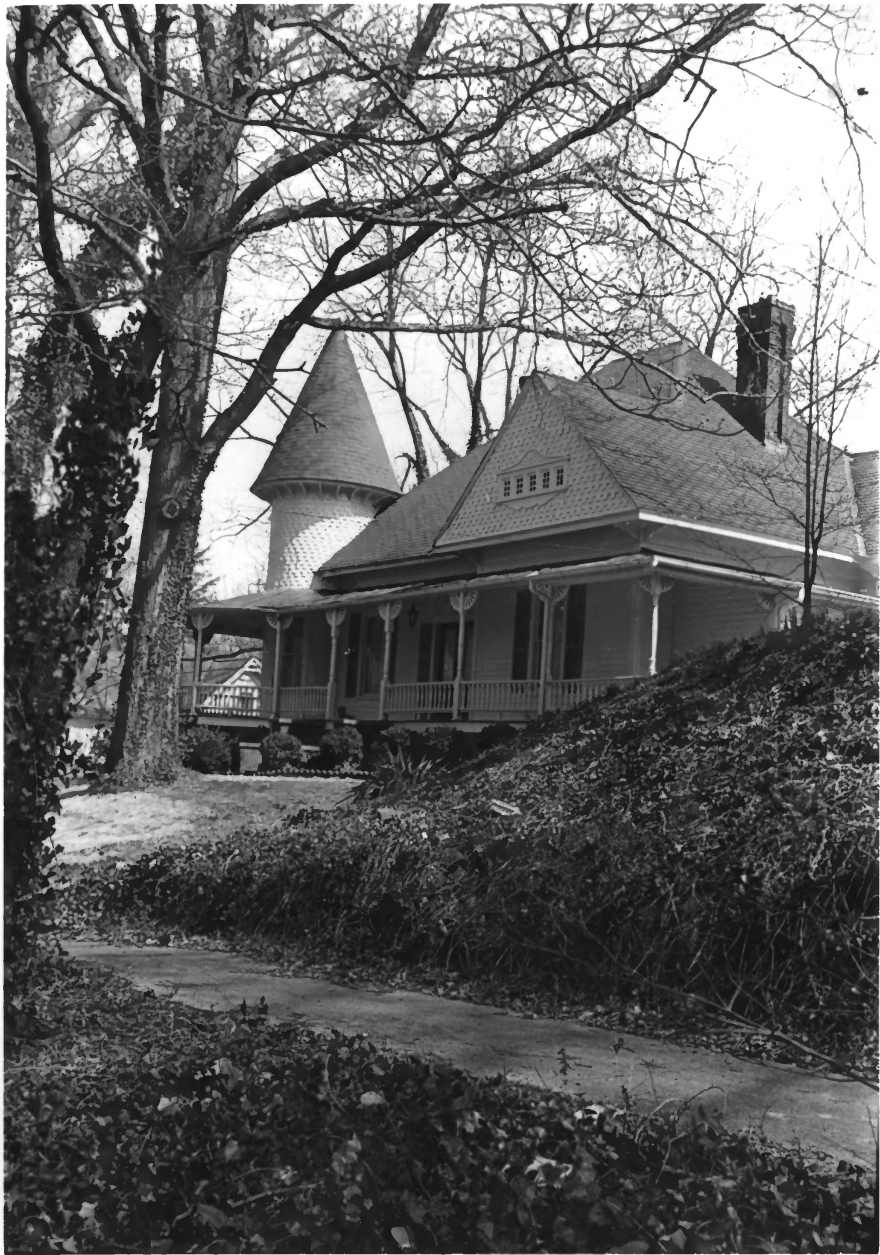
East Street South
looking north

Cowan House (#36) and McBride
House (#35).

DEC 13 1979

APR 3 1978

Photo Number: 8



Silk Stocking District
Talladega, Alabama
Talladega County

Ellen Mertins, March 1978
Alabama Historical Commission

Goldberg House (#43)

East Street South
view from southwest.

APR 3 1978

EC 13 1979

Photo Number: 9



Silk Stocking District
Talladega, Alabama
Talladega County

Ellen Mertins, March 1978
Alabama Historical Commission

Margaret Street
looking east

Sullivan House (#45), Bauerline-
Matson House (#46) and Hayden-Cook
House (#47).

APR 3 1978

DEC 13 1979 Photo Number: 10



Silk Stocking District
Talladega, Alabama
Talladega County

Ellen Mertins, March 1978
Alabama Historical Commission

East Street South
looking south

Corner House (#44), Goldberg House
(#43).

APR 3 1978

DEC 13 1970

Photo Number: 11



Silk Stocking District
Talladega, Alabama
Talladega County

Ellen Mertins, March 1978
Alabama Historical Commission

Plowman-Elliot Home (#32) H.A.B.S.
East Street South

APR 3 1978

DEC 13 1979

Photo Number: 12



Silk Stocking District
Talladega, Alabama
Talladega County

Ellen Mertins, March 1978
Alabama Historical Commission

McAlpine Place (#31)
East Street South.

APR 3 1978

DEC 13 1979 Photo Number: 13



Silk Stocking District
Talladega, Alabama
Talladega County

Ellen Mertins, March 1978
Alabama Historical Commission

East Street South APR 3 1978
looking north

Clardy Apartments (#61), Dr. Salter
House (#62), Wilson-Venable House
(#63), Methodist Manse (#64), and
First Methodist Church (#65).

DEC 13 1979

Photo Number: 14



Silk Stocking District
Talladega, Alabama
Talladega County

Ellen Mertins, March 1978
Alabama Historical Commission

Dr. Wren House (#24)
East Street South

APR 3 1978

DEC 13 1979

Photo Number: 15



Silk Stocking District
Talladega, Alabama
Talladega County

Ellen Mertins, March 1978
Alabama Historical Commission

East Street South
looking south

Dr. Wren House (#24), Wilder House
(#25), and Dr. Simms House (#26).

APR 3 1978

DEC 13 1979

Photo Number: 16



Silk Stocking District
Talladega, Alabama
Talladega County

Ellen Mertins, March 1978
Alabama Historical Commission

South Street East
looking east from intersection
with East Street South

Union 76 Service Station (#66)
left foreground.

APR 3 1978

DEC 13 1979

Photo Number: 17



Silk Stocking District
Talladega, Alabama
Talladega County

Ellen Mertins, March 1978
Alabama Historical Commission

South Street East
looking west

House (#86) and Talladega Public
Library (#87).

APR 3 1978

DEC 13 1979

Photo Number: 18



Silk Stocking District
Talladega, Alabama
Talladega County

Ellen Mertins, March 1978
Alabama Historical Commission

Talladega Public Library (#87)
South Street East
houses along Coffee shown in rear

APR 3 1978

DEC 13 1979

Photo Number : 19



Silk Stocking District
Talladega, Alabama
Talladega County

Ellen Mertins, March 1978
Alabama Historical Commission

Campus, Alabama School for Deaf
South Street East

Eugenia Thornton Hall (#144),
Manning Hall (#130), Henderson
Hall (#133), and Taylor Hall
(#131).

APR 3 1978

DEC 13 1979

Photo Number: 20



Silk Stocking District
Talladega, Alabama
Talladega County

Ellen Mertins, March 1978
Alabama Historical Commission

Manning Hall (#130) H.A.B.S.
Campus Alabama School for Deaf
South Street East

APR 3 1978

DEC 13 1979

Photo Number: 21



Silk Stocking District
Talladega, Alabama
Talladega County

Ellen Mertins, March 1978
Alabama Historical Commission

South Street East
looking east from A.S.D. Campus

Bowden House (#88), Jones-Bruner
(#89), Jones-Brown (#90).

APR 3 1978
DEC 13 1979

Photo Number: 22



Silk Stocking District
Talladega, Alabama
Talladega County

Ellen Mertins, March 1978
Alabama Historical Commission

Oak Street
looking east from Cherry

Rogers-Weaver House (#125), and
Link-Ragsdale House (#126).

APR 3 1978

DEC 13 1979

Photo Number: 23



Silk Stocking District
Talladega, Alabama
Talladega County

Ellen Mertins, March 1978
Alabama Historical Commission

Link-Ragsdale House (#126)
Cherry Street

APR 3 1978

DEC 13 1979

Photo Number: 24



Silk Stocking District
Talladega, Alabama
Talladega County

Ellen Mertins, March 1978
Alabama Historical Commission

Rogers-Weaver House (#125)
Oak Street

APR 3 1978

DEC 13 1979

Photo Number: 25



Silk Stocking District
Talladega, Alabama
Talladega County

Ellen Mertins, March 1978
Alabama Historical Commission

Walnut Street
looking north from intersection
with Oak Street

rear of Harrison-Scears Lee House
(#121).

APR 3 1978

DEC 13 1979

Photo Number: 26



Silk Stocking District
Talladega, Alabama
Talladega County

Ellen Mertins, March 1978
Alabama Historical Commission

South Street East
looking east

Otis Cook House (#118) in fore-
ground.

DEC 13 1979

APR 3 1978

Photo Number: 27



Silk Stocking District
Talladega, Alabama
Talladega County

Ellen Mertins, March 1978
Alabama Historical Commission

Mitchell House (#113)
South Street East

DEC 13 1979

APR 3 1978

Photo Number: 28



Silk Stocking District
Talladega, Alabama
Talladega County

Ellen Mertins, March 1978
Alabama Historical Commission

Judge Cecil Browne House (#110)
South Street East

APR 3 1978

DEC 13 1979 Photo Number: 29



Silk Stocking District
Talladega, Alabama
Talladega County

Ellen Mertins, March 1978
Alabama Historical Commission

South Street East
looking west from intersection at
First Street

Fleetwood-Wood House (#105).

APR 3 1978

DEC 13 1979

Photo Number: 30



Silk Stocking District
Talladega, Alabama
Talladega County

Ellen Mertins, March 1978
Alabama Historical Commission

Ivey House (#98)
South Street East.

DEC 13 1979

APR 3 1978

Photo Number: 31



Silk Stocking District
Talladega, Alabama
Talladega County

Ellen Mertins, March 1978
Alabama Historical Commission

South Street East
looking east

Reynolds-Kent House (#97) in
foreground.

APR 3 1978

DEC 13 1979

Photo Number: 32



Silk Stocking District
Talladega, Alabama
Talladega County

Ellen Mertins, March 1978
Alabama Historical Commission

Jones-Brown House (#90)
South Street East

APR 3 1978

DEC 13 1979

Photo Number: 33



Silk Stocking District
Talladega, Alabama
Talladega County

Ellen Mertins, March 1978
Alabama Historical Commission

Coffee Street
looking west

Clardy-Gillam House (#77), Tatum
House (#78), Burns House (#79),
and Haynes House (#80).

APR 3 1978

DEC 13 1979

Photo Number: 34



Silk Stocking District
Talladega, Alabama
Talladega County

Ellen Mertins, March 1978
Alabama Historical Commission

Coffee Street
looking west

Albright Woco Pep Station (#68)
and Mitchell Supply Company (#21).

APR 3 1978

DEC 13 1979

Photo Number: 35



Silk Stocking District
Talladega, Alabama, Talladega
County

Ellen Mertins, 1979
Alabama Historical Commission

Front lawn of School for the
Deaf.

Photo number: 36



Silk Stocking District
Talladega, Alabama, Talladega
County

Ellen Mertins, 1979
Alabama Historical Commission

Looking south along Hill Street
onto School for the Deaf campus
showing #131, 132, 135, 139 and
outbuildings of 148.

Photo number: 37

SEP 26 1979

DEC 13 1979



Silk Stocking District
Talladega, Alabama, Talladega
County

Ellen Mertins, 1979
Alabama Historical Commission

Looking south along Hill Street,
showing #135 (Old Gym and
Vocational Building).

Photo number: 38

SEP 26 1979

DEC 13 1979



Silk Stocking District
Talladega, Alabama, Talladega
County

Ellen Mertins, March, 1979
Alabama Historical Commission

Looking southeast into campus
from Hill Street, whosing #135
(Old Gym and Vocational Building)
and #136 (Wilson Shops).

Photo number: 39



MAINTENANCE

Silk Stocking District
Talladega, Alabama, Talladega
County

Ellen Mertins, March, 1979
Alabama Historical Commission

Looking southeast into campus
from Hill Street, showing
corner of #135 and portion of
#138 (Gym and Shop #2).

Photo number: 40

SEP 26 1979



Silk Stocking District
Talladega, Alabama, Talladega
County

Ellen Mertins, March, 1979
Alabama Historical Commission

Looking southeast into campus from
Hill Street, showing #138 (Gym and
Shop #2) and portion of #137
(J.A. McBride Building).

Photo number: 41

SEP 26 1979



Silk Stocking District
Talladega, Alabama, Talladega
County

Ellen Mertins, March, 1979
Alabama Historical Commission

Looking northwest into back lot
of #148 (Whitwood) showing out-
buildings.

Photo number: 42 **SEP 26 1979**

DEC 13 1979



Silk Stocking District
Talladega, Alabama, Talladega
County

Ellen Mertins, March, 1979
Alabama Historical Commission

Looking east along rear of School
for the Deaf campus.

Photo number: 43

SEP 26 1979

DEC 13 1979



Silk Stocking District
Talladega, Alabama, Talladega
County

Ellen Mertins, March, 1979
Alabama Historical Commission

Looking northwest along Cherry
showing #143 and 147.

Photo number: 44



No.N

John McFarlane Hall

45

Ala.School for Deaf

Silk Stocking District
Talladega, Alabama, Talladega
County

Vern Scott, February, 1979
106 Broome Street, Talladega

Looking south along Cherry,
showing #145 and portion of #142.

Photo number: 45



Silk Stocking District
Talladega, Alabama, Talladega
County

Ellen Mertins, March, 1979
Alabama Historical Commission

Looking southwest from inter-
section of South Street, East
and Cherry Street, showing #146
(Johnson Hall).

Photo number: 47 **SEP 26 1979**



Silk Stocking District
Talladega, Alabama, Talladega
County

Vern Scott, February, 1979
106 Broome Street, Talladega

Looking northwest at dining
annex #134.

Photo number: 48

SEP 26 1979



No. G

John A. McBride Memorial

49

Ala. School for Deaf

Silk Stocking District
Talladega, Alabama, Talladega
County

Vern Scott, February, 1979
106 Broome Street, Talladega

Looking south at John A. McBride
Memorial (#137).

Photo number: 49

SEP 26 1979

DEC 13 1979



Silk Stocking District
Talladega, Alabama, Talladega
County

Vern Scott, February, 1979
106 Broome Street, Talladega

Looking west at Catherine
Riser Cottage (#140).

Photo number: 50

SEP 26 1979

DEC 13 1979



Silk Stocking District
Talladega, Alabama, Talladega
County

Vern Scott, February, 1979
106 Broome Street, Talladega

Looking southwest at Bibb Graves
Hall (#142).

Photo number: 51

SEP 26 1979

DEC 13 1979



Silk Stocking District
Talladega, Alabama, Talladega
County

Vern Scott, February, 1979
106 Broome Street, Talladega

Looking south at Dowling Hospital
(#139).

Photo number: 52.

SEP 26 1979

DEC 13 1979