



THE MANSE

Natchez, Adams County, Mississippi

Mary McCahon

May, 1978

Mississippi Department of Archives and  
History

Facade (northwest elevation), from the  
northwest.

Photo 1 of 6

MAR 7 1979

JAN 23 1979



THE MANSE

Natchez, Adams County, Mississippi

Mary McCahon

May, 1978

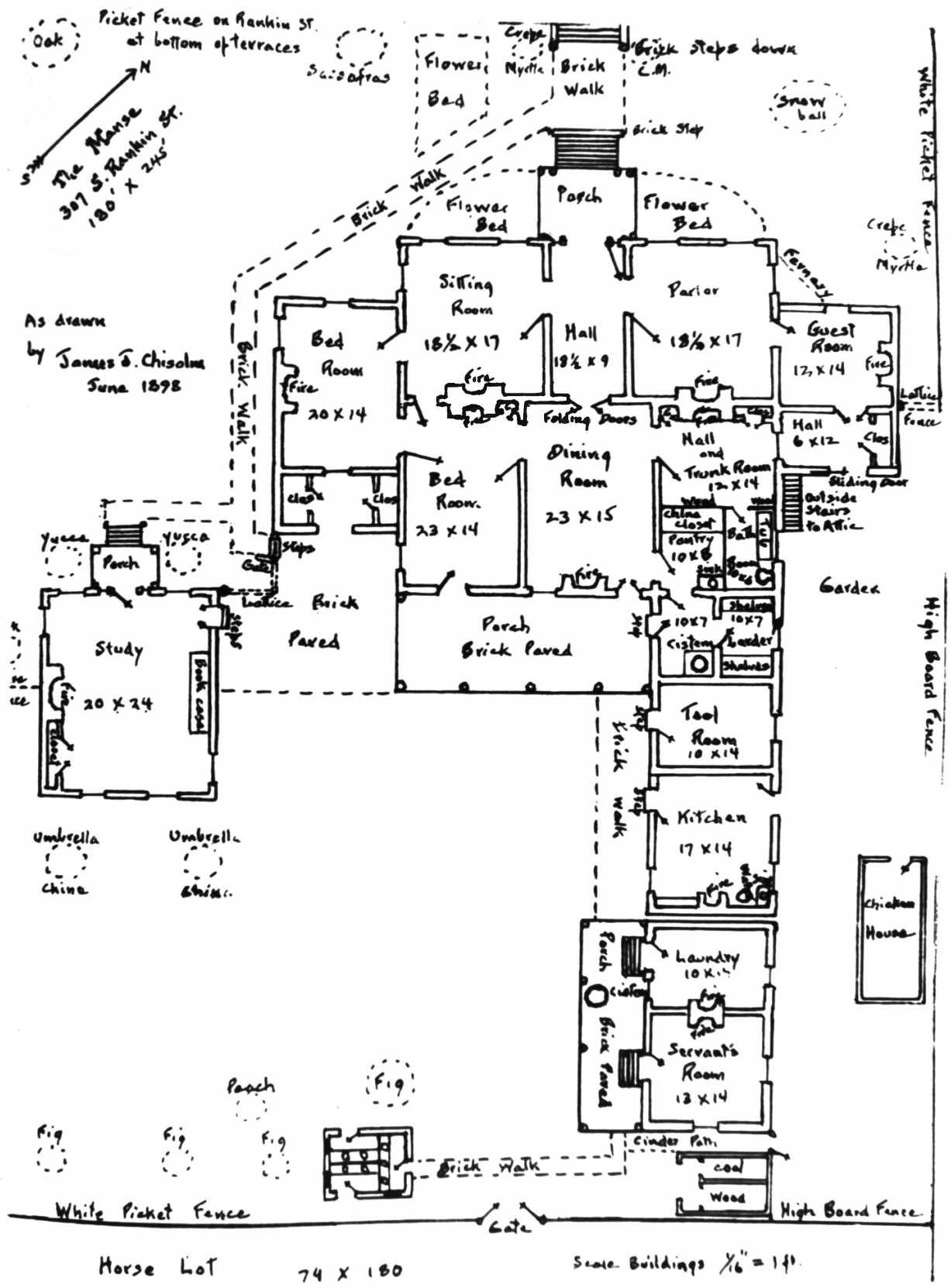
Mississippi Department of Archives and  
History

Detail of entrance bay on facade (north-  
west elevation).

Photo 2 of 6

**JAN 23 1979**

**MAR 7 1979**



The Manse, as drawn in 1898

THE MANSE

Natchez, Adams County, Mississippi

Lida Hord

May, 1978

Mississippi Department of Archives and  
History

MAR 7 1979

1898 sketch of floor plan, copied from

J. Julian Chisolm's History of The  
First Presbyterian Church of Natchez,  
Mississippi.

Photo 3 of 6

JAN 23 1979



THE MANSE

Natchez, Adams County, Mississippi

Mary McCahon

May, 1978

Mississippi Department of Archives and  
History

View of central hall, looking northwest  
toward facade entrance.

Photo 4 of 6

JAN 23 1979

MAR 7 1979





THE MANSE

Natchez, Adams County, Mississippi

Mary McCahon

May, 1978

Mississippi Department of Archives and  
History

Northwest (facade) and southwest elevations  
of house and study, from the west.

Photo 5 of 6

JAN 23 1979

MAR 7 1979



THE MANSE

Natchez, Adams County, Mississippi

Mary McCahon

May, 1978

Mississippi Department of Archives and  
History

Northwest (facade) and southwest elevations  
of study, from the southwest.

Photo 6 of 6

MAR 7 1979

JAN 23 1979