



St. Paul, Minneapolis and Manitoba
Railway Company Shops

St. Paul, Ramsey County, MN

William F. Dunwiddie

7/22/86

Negative: Miller Dunwiddie Associates

3601 W. 77th St., Suite 850

Minneapolis, MN 55435

Facing south-west showing the east
and west elevations of (from left

to right) the Machine Shop, the
Pattern Shop and Storehouse

Negative # 8532 - A/3A



2

St. Paul, Minneapolis and Manitoba
Railway Company Shops
St. Paul, Ramsey County, MN
William F. Dunwiddie

7/22/86

Negative: Miller Dunwiddie Associates
3601 W. 77th St., Suite 850
Minneapolis, MN 55435

Facing north-east showing the west
and south elevations of (from
left to right) the Storehouse,
the Pattern Shop and the
Machine Shop.

Negative # 8532 - B/10A



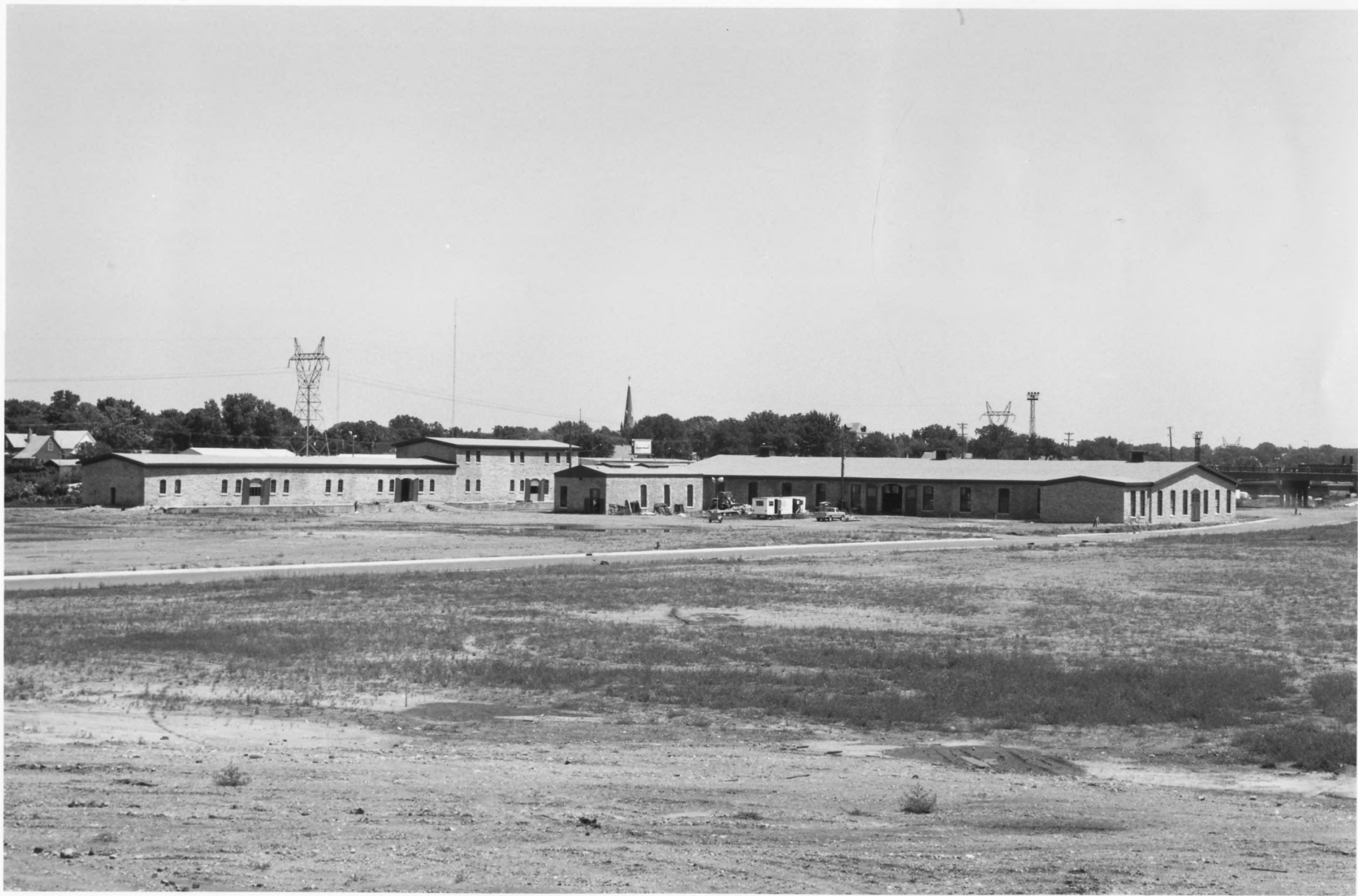
3
St. Paul, Minneapolis and Manitoba
Railway Company Shops
St. Paul, Ramsey County, MN
William F. Dunwiddie

7/22/86

Negative: Miller Dunwiddie Associates
3601 W. 77th St., Suite 850
Minneapolis, MN 55435

Facing north-west showing the south
and east elevations of (from
left to right) the Pattern Shop,
the Storehouse and the partial
west elevation of the Machine Shop.

Negative # 8532 - B/32A



4

St. Paul, Minneapolis and Manitoba
Railway Company Shops

St. Paul, Ramsey County, MN

William F. Dunwiddie

7/22/86

Negative: Miller Dunwiddie Associates

3601 W. 77th St., Suite 850

Minneapolis, MN 55435

Facing north-east showing the west
and south elevations of (from

left to right) the Shorehouse,

the Pattern Shop and the

Machine Shop

Negative # 8532 - B/18A



5

St. Paul, Minneapolis and Manitoba
Railway Company Shops
(Machine Shop)

St. Paul, Ramsey County, MN

William F. Dunwiddie

7/22/86

Negative: Miller Dunwiddie Associates

3601 W. 77th St., Suite 850

Minneapolis, MN 55435

Facing north-east showing the west
elevation of the main building,
the west and south elevations of
the boiler addition, and the
main building

Negative # 8532 - A/18A



St. Paul, Minneapolis and Manitoba
Railway Company Shops
(Machine Shop)

St. Paul, Ramsey County, MN
William F. Dunwiddie

7/22/86

Negative: Miller Dunwiddie Associates
3601 W. 77th St., Suite 850
Minneapolis, MN 55435

Facing north-west showing the
south and east elevations

Negative # 8532 - A/1A



St. Paul, Minneapolis and Manitoba
Railway Company Shops
(Machine Shop)

St. Paul, Ramsey County, MN

William F. Dunwiddie

7/22/86

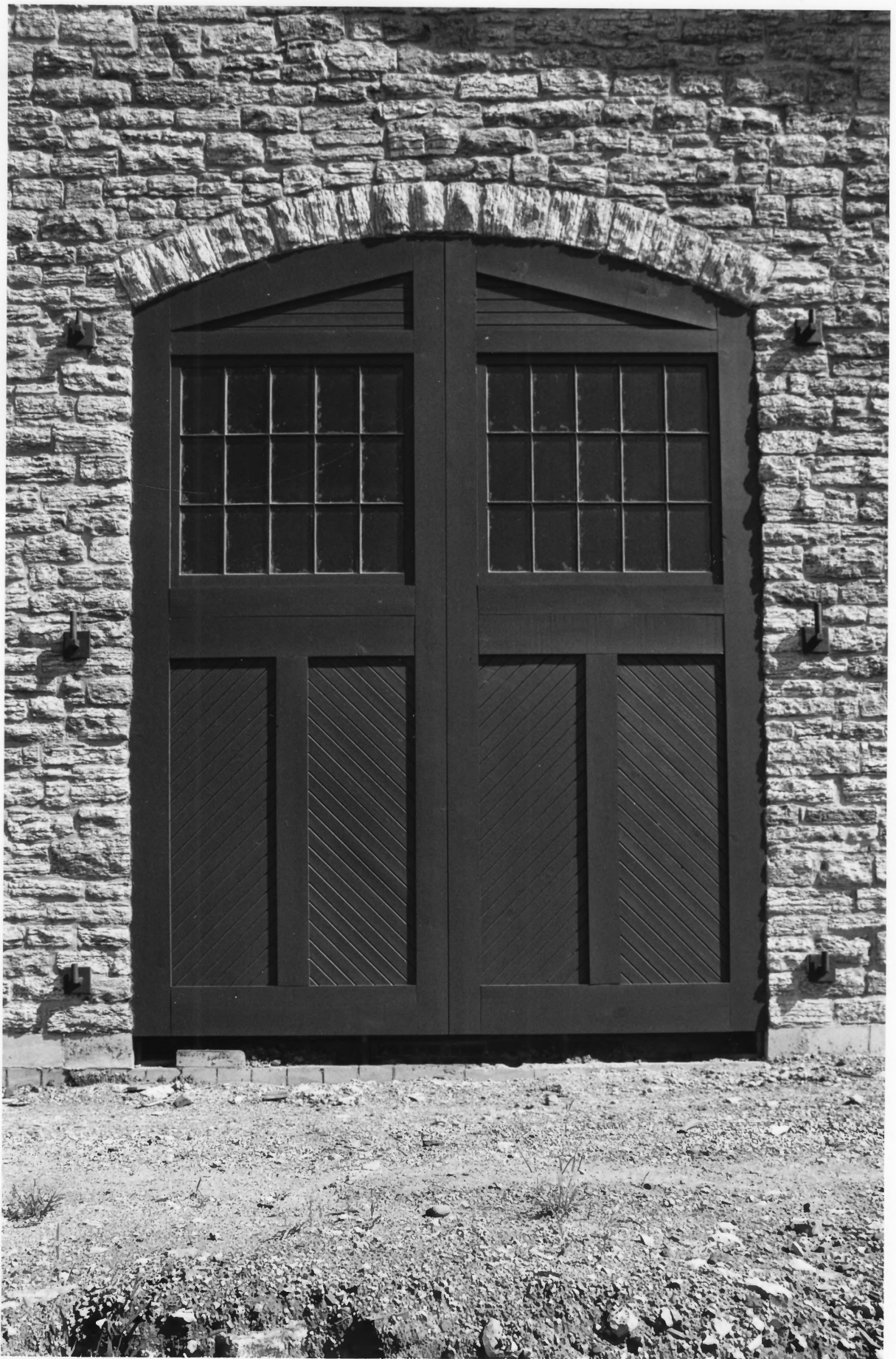
Negative: Miller Dunwiddie Associates

3601 W. 77th St., Suite 850

Minneapolis, MN 55435

Facing south-west showing the east
and north elevations

Negative # 8532 - A/2A



St. Paul, Minneapolis and Manitoba
Railway Company Shops
(Machine Shop)

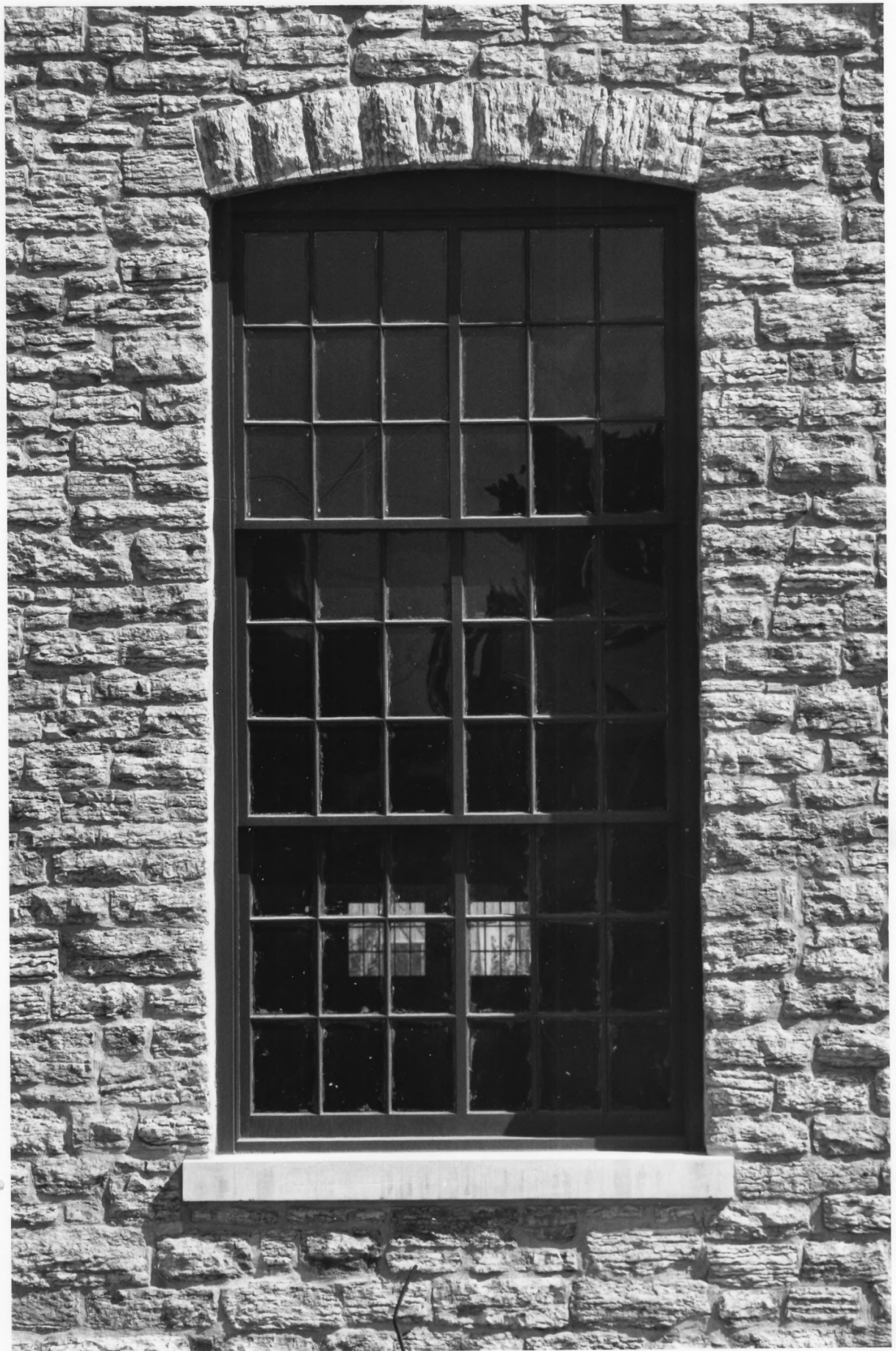
St. Paul, Ramsey County, MN
William F. Dunwiddie

7/22/86

Negative: Miller Dunwiddie Associates
3601 W. 77th St., Suite 850
Minneapolis, MN 55435

Facing west showing detail of
reconstructed door (Note: Strap
hinges to be applied)

Negative # 8532 - A/24A



9

St. Paul, Minneapolis and Manitoba
Railway Company Shops
(Machine Shop)

St. Paul, Ramsey County, MN

William F. Dunwiddie

7/22/86

Negative: Miller Dunwiddie Associates

3601 W. 77th St., Suite 850

Minneapolis, MN 55435

Facing east showing detail of

reconstructed triple-hung

wood window and stone sill

Negative # 8532 - A/25A



10
St. Paul, Minneapolis and Manitoba
Railway Company Shops
(Machine Shop)

St. Paul, Ramsey County, MN
William F. Dunwiddie
7/22/86

Negative: Miller Dunwiddie Associates
3601 W. 77th St., Suite 850
Minneapolis, MN 55435

Facing north showing the interior
of the main portion of the
building while under construction
Negative # 8532 - A/33A



St. Paul, Minneapolis and Manitoba
Railway Company Shops
(Pattern Shop)

St. Paul, Ramsey County, MN
William F. Dunwiddie

7/22/86

Negative: Miller Dunwiddie Associates
3601 W. 77th St., Suite 850
Minneapolis, MN 55435

Facing north-east showing (from
left to right) a partial south
elevation of the Storehouse,
the west and south elevations
of the Pattern Shop and a
partial west elevation of the
Machine Shop

Negative # 8532 - A/9A



St. Paul, Minneapolis and Manitoba
Railway Company Shops
(Pattern Shop)

St. Paul, Ramsey County, MN

William F. Dunwiddie

7/22/86

Negative: Miller Dunwiddie Associates

3601 W. 77th St., Suite 850

Minneapolis, MN 55435

Facing south-west showing the east
and north elevations

Negative # 8532 - A/7A

12

THIS PAPER
MANUFACTURED
BY KODAK

THIS PAPER
MANUFACTURED
BY KODAK

THIS PAPER
MANUFACTURED
BY KODAK

THIS PAPER
MANUFACTURED
BY KODAK

THIS PAPER
MANUFACTURED
BY KODAK

THIS PAPER
MANUFACTURED
BY KODAK

THIS PAPER
MANUFACTURED
BY KODAK



St. Paul, Minneapolis and Manitoba
Railway Company Shops
(Pattern Shop)

St. Paul, Ramsey County, MN

William F. Dunwiddie

7/22/86

Negative: Miller Dunwiddie Associates

3601 W. 77th St., Suite 850

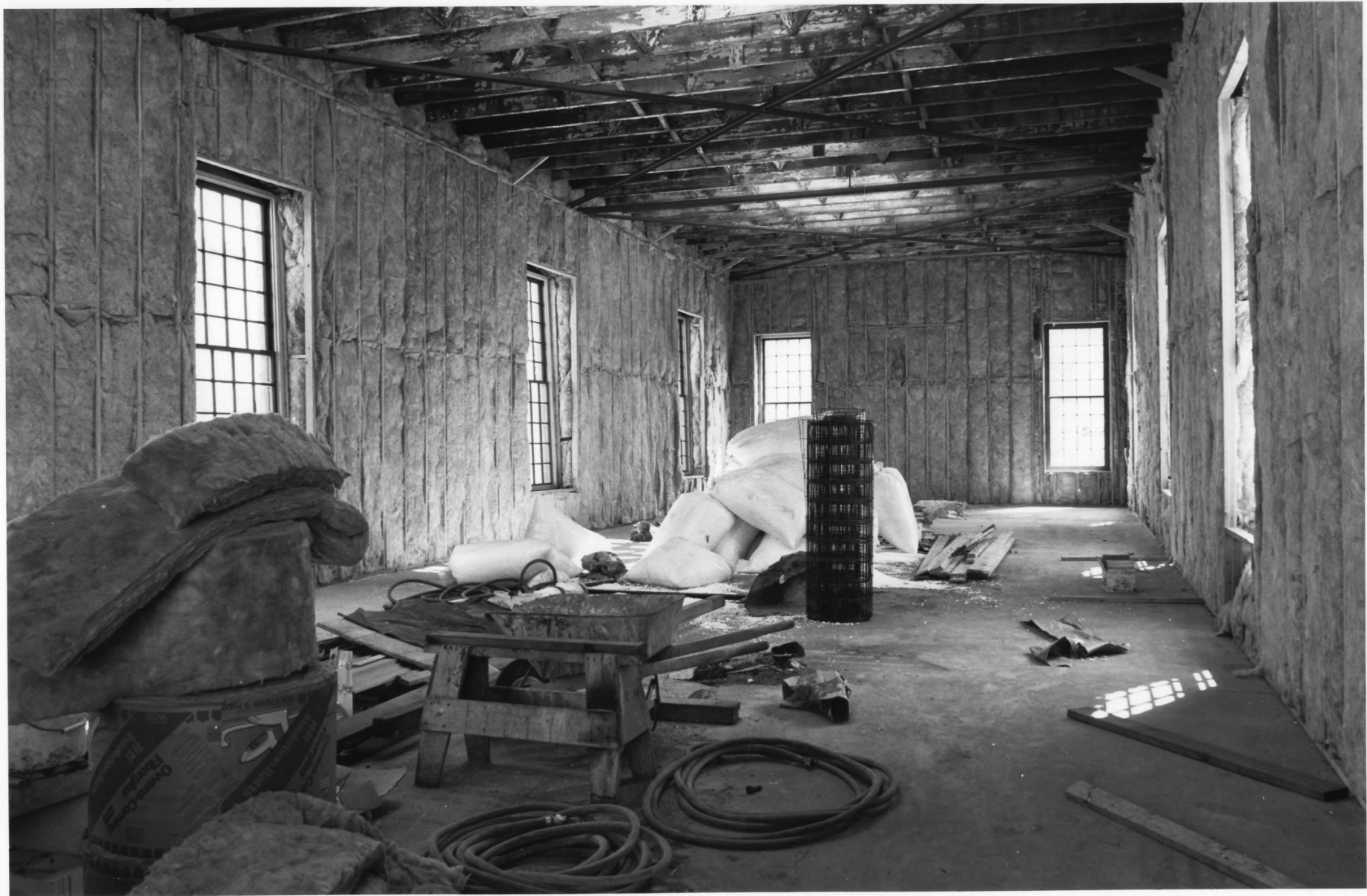
Minneapolis, MN 55435

Facing north showing a detail of a
reconstructed double-hung wood
window

Negative # 8532 - B/9A

3

THIS PAPER MANUFACTURED BY KODAK



St. Paul, Minneapolis and Manitoba
Railway Company Shops
(Pattern Shop)

St. Paul, Ramsey County, MN

William F. Dunwiddie

7/22/86

Negative: Miller Dunwiddie Associat

3601 W. 77th St., Suite 850

Minneapolis, MN 55435

Facing east showing the interior
while under construction

Negative # 8532 - A/36A

14



St. Paul, Minneapolis and Manitoba
Railway Company Shops
(Storehouse)

St. Paul, Ramsey County, MN
William F. Dunwiddie

7/22/86

Negative: Miller Dunwiddie Associates

3601 W. 77th St., Suite 850
Minneapolis, MN 55435

Facing north-west showing the
south and east elevations

Negative # 8532 - A/28A



St. Paul, Minneapolis and Manitoba
Railway Company Shops
(Storehouse)

St. Paul, Ramsey County, MN
William F. Dunwiddie

7/22/86

Negative: Miller Dunwiddie Associa
3601 W. 77th St., Suite 850
Minneapolis, MN 55435

Facing north-east showing (from
left to right) the west and sou'
elevations of the Storehouse, th
west and south elevations of the
Pattern Shop, and a partial west
elevation of the Machine Shop

Negative # 8532 - A/14A



St. Paul, Minneapolis and Manitoba
Railway Company Shops
(Storehouse)

St. Paul, Ramsey County, MN

William F. Dunwiddie

7/22/86

Negative: Miller Dunwiddie Associates

3601 W. 77th St., Suite 850

Minneapolis, MN 55435

Facing south-east showing the north
and west elevations

Negative # 8532 - A/11A

11



St. Paul, Minneapolis and Manitoba
Railway Company Shops
(Storehouse)

St. Paul, Ramsey County, MN
William F. Dunwiddie

7/22/86

Negative: Miller Dunwiddie Associates
3601 W. 77th St., Suite 850
Minneapolis, MN 55435

Facing south-west showing (from
left to right) the east and a
portion of the north elevations
of the Pattern Shop and the
east and north elevations of the
Storehouse

Negative # 8532 - A/4A

21



St. Paul, Minneapolis and Manitoba
Railway Company Shops
(Storehouse)

St. Paul, Ramsey County, MN

William F. Dunwiddie

7/22/86

Negative: Miller Dunwiddie Associates

3601 W. 77th St., Suite 850

Minneapolis, MN 55435

Facing west showing the interior
of the first floor while under
construction

Negative # 8532 - B/4A



St. Paul, Minneapolis and Manitoba
Railway Company Shops
(Storehouse)

St. Paul, Ramsey County, MN

William F. Dunwiddie

7/22/86

Negative: Miller Dunwiddie Associates

3601 W. 77th St., Suite 850

Minneapolis, MN 55435

Facing east showing the interior
of the second floor while under
construction

Negative # 8532 - B/7A

22