



**NATIONAL REGISTER OF HISTORIC PLACES  
PROPERTY PHOTOGRAPH FORM**

*(Type all entries - attach to or enclose with photograph)*

STATE	
ARIZONA	
COUNTY	
COCONINO	
FOR NPS USE ONLY	
ENTRY NUMBER	DATE
MAR 15 1976	

SEE INSTRUCTIONS

**1. NAME**

COMMON: Lees Ferry Historic District  
 AND/OR HISTORIC: Lees Ferry Fort

**2. LOCATION**

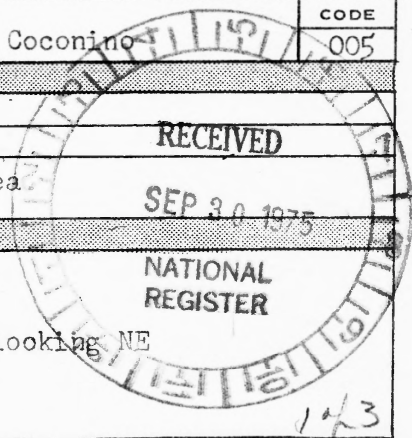
STREET AND NUMBER: Sections 13 & 18, T.40N., R.7E. Lees Ferry Quadrangle-Arizona  
 CITY OR TOWN: Lees Ferry District, Glen Canyon NRA  
 STATE: Arizona      CODE: 04      COUNTY: Coconino      CODE: 005

**3. PHOTO REFERENCE**

PHOTO CREDIT: National Park Service - USDI  
 DATE OF PHOTO: September 1974  
 NEGATIVE FILED AT: Glen Canyon National Recreation Area

**4. IDENTIFICATION**

DESCRIBE VIEW, DIRECTION, ETC.  
  
 Aerial view of Lees Ferry Historic District, looking NE





UNITED STATES DEPARTMENT OF THE INTERIOR  
NATIONAL PARK SERVICE

NATIONAL REGISTER OF HISTORIC PLACES  
PROPERTY PHOTOGRAPH FORM

(Type all entries - attach to or enclose with photograph)

STATE	
ARIZONA	
COUNTY	
COCONINO	
FOR NPS USE ONLY	
ENTRY NUMBER	DATE
MAR 15 1976	

SEE INSTRUCTIONS

1. NAME

COMMON: Lees Ferry Historic District  
AND/OR HISTORIC: Lees Ferry Fort

2. LOCATION

STREET AND NUMBER:  
Sections 13 & 18, T.40N., R.7E. Lees Ferry Quadrangle-Arizona

CITY OR TOWN:  
Lees ferry District, Glen Canyon NRA

STATE:	Arizona	CODE	COUNTY:	Coconino	CODE
		04			005

3. PHOTO REFERENCE

PHOTO CREDIT: National Park Service - USDI

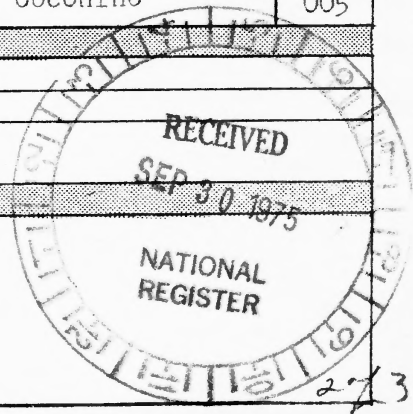
DATE OF PHOTO: September 1974

NEGATIVE FILED AT: Glen Canyon National Recreation Area

4. IDENTIFICATION

DESCRIBE VIEW, DIRECTION, ETC.

Main ferry site ruins





UNITED STATES DEPARTMENT OF THE INTERIOR  
NATIONAL PARK SERVICE

NATIONAL REGISTER OF HISTORIC PLACES  
PROPERTY PHOTOGRAPH FORM

(Type all entries - attach to or enclose with photograph)

STATE ARIZONA	
COUNTY COCONINO	
FOR NPS USE ONLY	
ENTRY NUMBER MAR 15 1976	DATE

SEE INSTRUCTIONS

1. NAME

COMMON: Lees Ferry Historic District  
AND/OR HISTORIC: Lees Ferry Fort

2. LOCATION

STREET AND NUMBER:  
Sections 13 & 18, T.40N., R.7E. Lees Ferry Quadrangle, Arizona  
CITY OR TOWN:  
Lees Ferry District, Glen Canyon NRA  
STATE: Arizona CODE: 04 COUNTY: Coconino CODE: 005

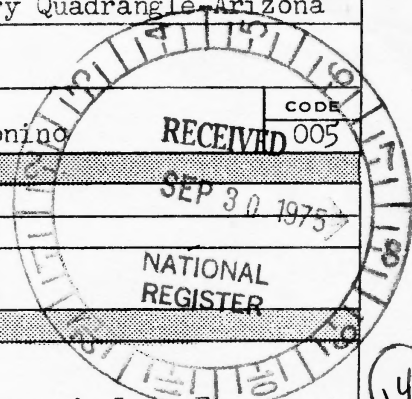
3. PHOTO REFERENCE

PHOTO CREDIT: National Park Service - USDI  
DATE OF PHOTO: September 1974  
NEGATIVE FILED AT: Glen Canyon National Recreation Area

4. IDENTIFICATION

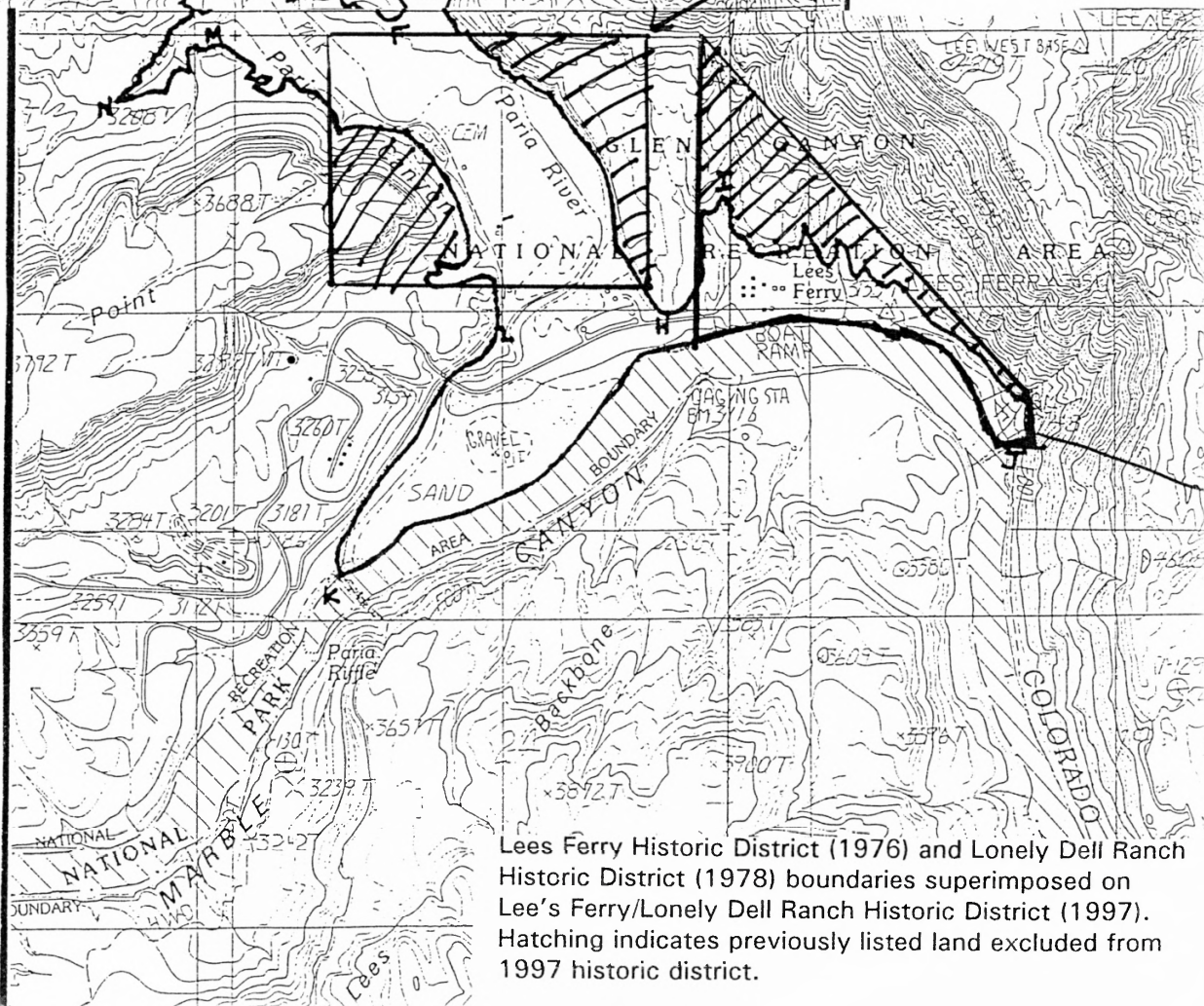
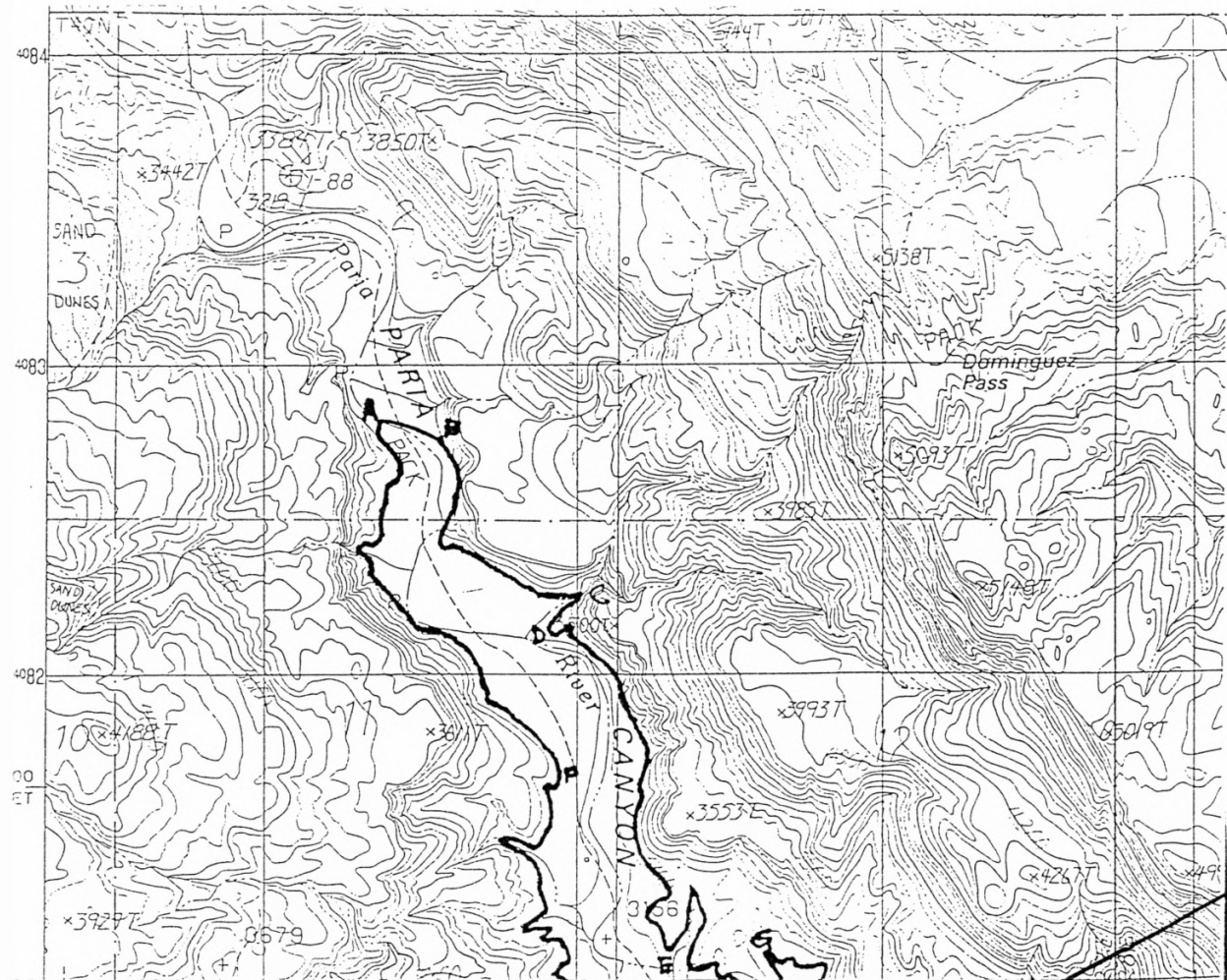
DESCRIBE VIEW, DIRECTION, ETC.

Lees Ferry Fort Complex - Chicken house in foreground, Lees Ferry Fort with Spencer Addition in left rear, and the Post Office in the right rear.



14

3 of 3



Lees Ferry Historic District (1976) and Lonely Dell Ranch Historic District (1978) boundaries superimposed on Lee's Ferry/Lonely Dell Ranch Historic District (1997). Hatching indicates previously listed land excluded from 1997 historic district.