

Historic Newkirk Lodge I.O.O.F., 1
now Stephens Realty and Helmut's Bakery
(from Right to Left)

Newkirk, Oklahoma

Photographer: Laurie Croft

May, 1983

Oklahoma Historical Preservation Survey

Oklahoma State University

Front view, facing East

HOUSER HARDWARE

SECURITY AB

WILSON

1903

1911

ROLLING STOCK

FORWARD



Houser Hardware and north half of Security 2

Abstract (from Left to Right)

Newkirk, OK

Photographer: Laurie Croft

May, 1983

Oklahoma Historical Preservation Survey

Oklahoma State University

Front view, facing East and slightly South



MASONIC TEMPLE

FEDERAL SAVINGS

NEWBORN
CAFE

S
Schonauer

Masonic Temple

3

Newkirk, OK

Photographer: Laurie Croft

May, 1983

Oklahoma Historical Preservation Survey

Oklahoma State University

Front view, facing East

MASONIC TEMPLE

R & G
STYLE SHOPPE

Sooner Federal Savings



R & G Style Shop, Sooner Federal 4
Savings, and North part of Masonic
Temple (from left to right)

Newkirk, OK

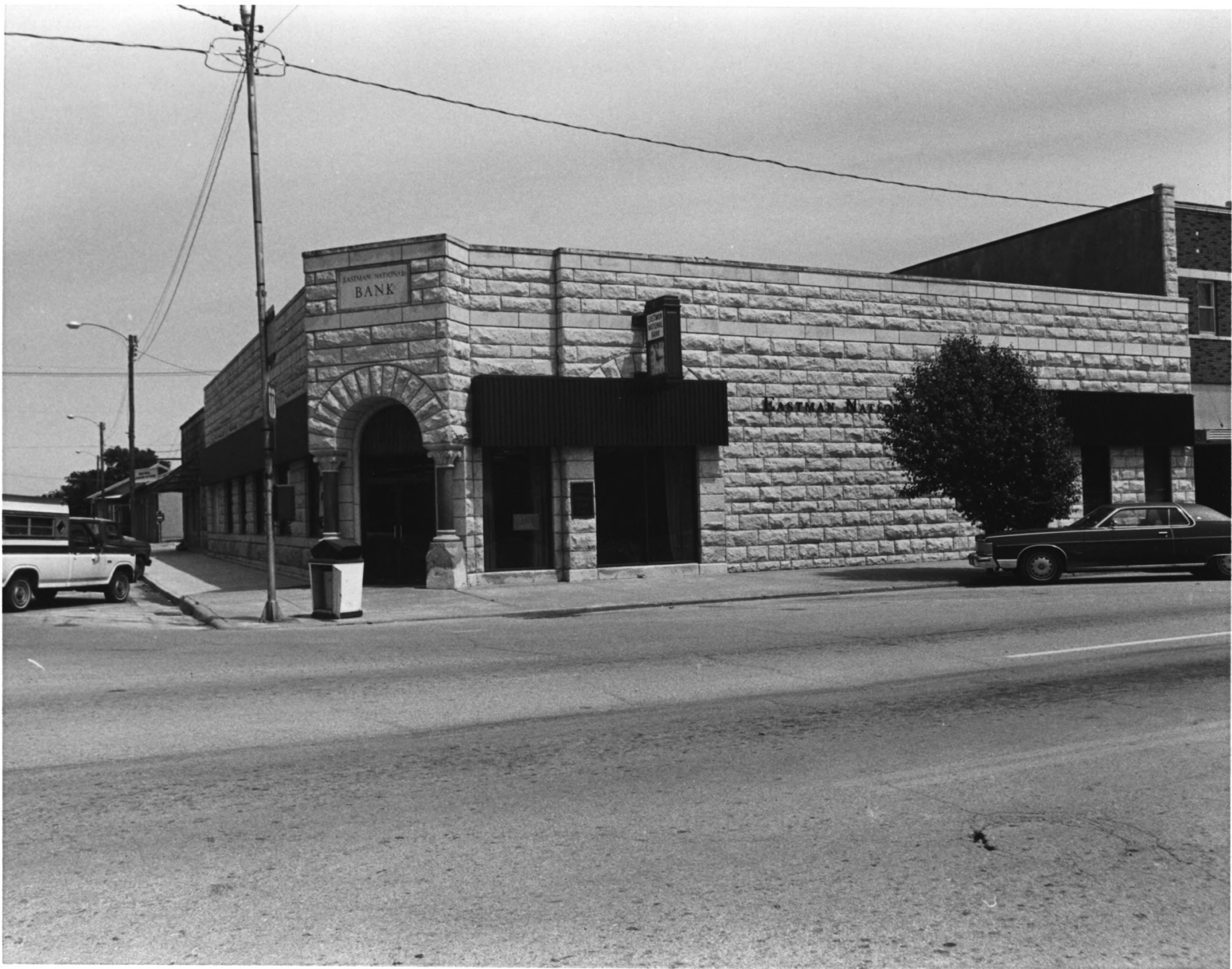
Photographer: Laurie Croft

May, 1983

Oklahoma Historical Preservation Survey

Oklahoma State University

Front view, facing East



EASTMAN NATIONAL
BANK

EASTMAN NATIONAL

Eastman National Bank

5

Newkirk, OK

Photographer: Laurie Croft

May, 1983

Oklahoma Historical Preservation Survey

Oklahoma State University

View of north side and of front, facing east
and slightly south



ALBRIGHT TITLE & TRUST COMPANY.

Albright Title and Trust

6

Newkirk, OK

Photographer: Laurie Croft

May, 1983

Oklahoma Historical Preservation Survey

Oklahoma State University

View of south side and of front, facing
northeast

502

ALVINA'S

OTASCO



Alvina's and Otasco

7

Newkirk, OK

Photographer: Laurie Croft

May, 1983

Oklahoma Historical Preservation Survey

Oklahoma State University

Front view, facing east



KOCHESSE

THOMAS

WELCOME

CAFE



Historic Thomas and Kuchler

8

Buildings, now R & M Cafe, and south
half of vacant building (from right to left)

Newkirk, OK

Photographer: Laurie Croft

Oklahoma Historical Preservation Survey

Oklahoma State University

Front view, facing east



P. MASON

STANLEY

1502

1503

ZENTH
C&S



Historic P.S. Mason and Stanley Buildings 9
and north half of vacant building (from
left to right)

Newkirk, OK

Photographer: Laurie Croft

Oklahoma Historical Preservation Survey

Oklahoma State University

Front view, facing east



NO
U
TURN

MAIN

Complete
WRECK REBUILDING
• WE INSTALL
AUTO GLASS

Newkirk
BODY & PAINT
24 HR. WRECKER SERVICE
Phone 362-2494

Newkirk Body and Paint and storage building: (left to right) 10

Newkirk, OK

Photographer: Laurie Croft

Oklahoma Historical Preservation Survey

Oklahoma State University

View of north side and front, facing east
and slightly south



Endicott Hotel and Historic Cory 11
building, now Doyle's Barber Shop (right
to left)

Newkirk, OK

Photographer: Laurie Croft

Oklahoma Historical Preservation Survey

Oklahoma State University

View of north side and front, facing west
and slightly south



Historic Cory building, now Doyle's 12
Barber Shop,
Historic J.C. Columbia Building, now Bar
Next Door, and
Historic C.E. Vogle building
Newkirk, Oklahoma
Photographer: Laurie Croft
Oklahoma Historic Preservation Survey.
Oklahoma State University
View of front, facing west



ANTIQUES

CHAR RON Lounge

South half of Newkirk Herald Journal, 13
Historic Endicott building, now Char Ron
Lounge, and north half of Antique shop (R-L)
Photographer: Laurie Croft
Oklahoma Historic Preservation Survey
Oklahoma State University
View of front, facing west

FARMERS NATIONAL BANK

BEER

CHAS. BEER



Farmer's National Bank, now under
restoration, Antique shop and historic
Endicott building, now Char Ron Lounge
(L to R)

Photographer: Laurie Croft
Oklahoma Historic Preservation Survey
Oklahoma State University

View of south side of bank and fronts,
facing west and slightly north



McCleary-Hutton
INSURANCE
AGENCY

McCleary Hutton Insurance Agency and north
half of Endsley's Donuts (R to L) 15

Photographer: Laurie Croft

Oklahoma Historic Preservation Survey

Oklahoma State University

View of front, facing west



THE NATL BANK

1899

O. N. WALKER
AGENCY

Antiques

Antiques

Historic W.S. Brown building, 16
now Chelsea Fair Antiques and historic
First National Bank, now various offices
(R to L)

Photographer: Laurie Croft

Oklahoma Historic Preservation Survey

Oklahoma State University

View of front, facing west



Historic First National Bank, 17
now various offices, and historic Barnes
building, now a dental clinique
Photographer: Laurie Croft
Oklahoma Historic Preservation Survey
Oklahoma State University
View of front, facing north and slightly
west



Rx
DRUGS

Simons Pharmacy

FORD

West corner of Historic First National 18
Bank, now used for various offices; historic
Barnes building, now a dental clinique; and
Simon's Pharmacy (R to L)

Photographer: Laurie Croft

Oklahoma Historic Preservation Survey

Oklahoma State University

View of front, facing north and slightly
west



CRESTVIEW
CLEANERS

NEWKIRK
BEAUTY
SALON

Newkirk Beauty Salon and Crestview 19

Cleaners, and Clip "N" Curl (R to L)

Photographer: Laurie Croft

Oklahoma Historic Preservation Survey

Oklahoma State University

View of front, facing north



WASH BUREAU
OPEN
MON WED FRI SAT

CRESTVIEW
CLUB

Newkirk Electronics, vacant building 20

and Clip 'N' Curl (L to R)

Photographer: Laurie Croft

Oklahoma Historic Preservation Survey

Oklahoma State University

View of front, facing north



Historic Park Hotel,

21

now the American Legion Hall;

Teentown (L to R)

Photographer: Laurie Croft

Oklahoma Historic Preservation Survey

Oklahoma State University

View of west side of Park Hotel, and fronts
facing northeast